



For Simulation Use Only  
Not For Real Life

HEAL/DBB

**AERODROME CHART - ICAO**

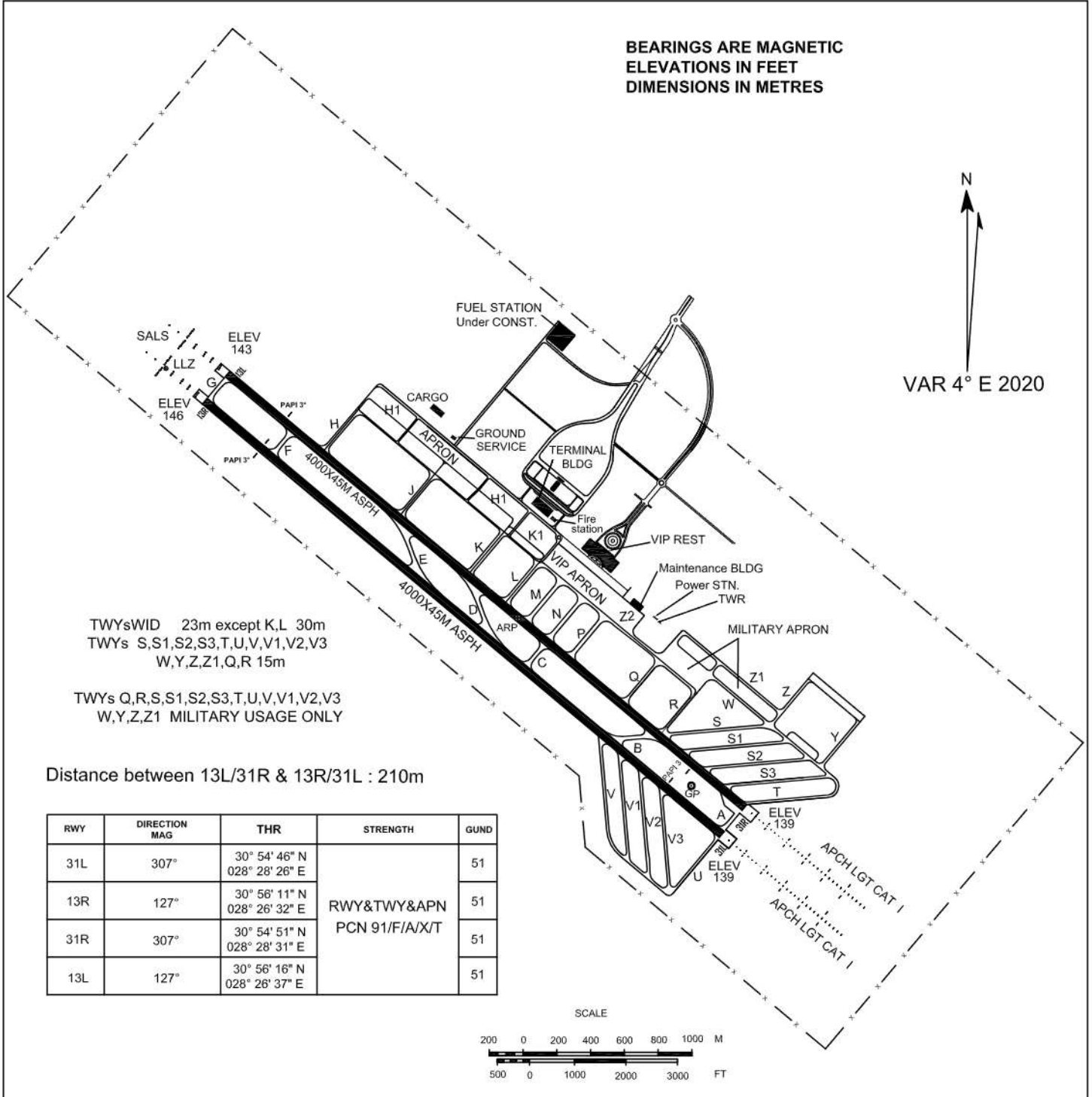
**30 55 28N  
028 27 41E**

**ELEV 146FT**

TWR	123.4
STAND BY	120.0
EMERG	121.5
FOLLOW ME	121.9

**AL ALAMAIN /  
AL ALAMAIN**

**BEARINGS ARE MAGNETIC  
ELEVATIONS IN FEET  
DIMENSIONS IN METRES**

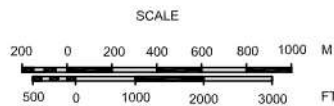


TWYs WID 23m except K.L 30m  
TWYs S,S1,S2,S3,T,U,V,V1,V2,V3  
W,Y,Z,Z1,Q,R 15m

TWYs Q,R,S,S1,S2,S3,T,U,V,V1,V2,V3  
W,Y,Z,Z1 MILITARY USAGE ONLY

Distance between 13L/31R & 13R/31L : 210m

RWY	DIRECTION MAG	THR	STRENGTH	GUND
31L	307°	30° 54' 46" N 028° 28' 26" E	RWY&TWY&APN PCN 91/F/A/X/T	51
13R	127°	30° 56' 11" N 028° 26' 32" E		51
31R	307°	30° 54' 51" N 028° 28' 31" E		51
13L	127°	30° 56' 16" N 028° 26' 37" E		51





For Simulation Use Only  
Not For Real Life

HEAL/DBB

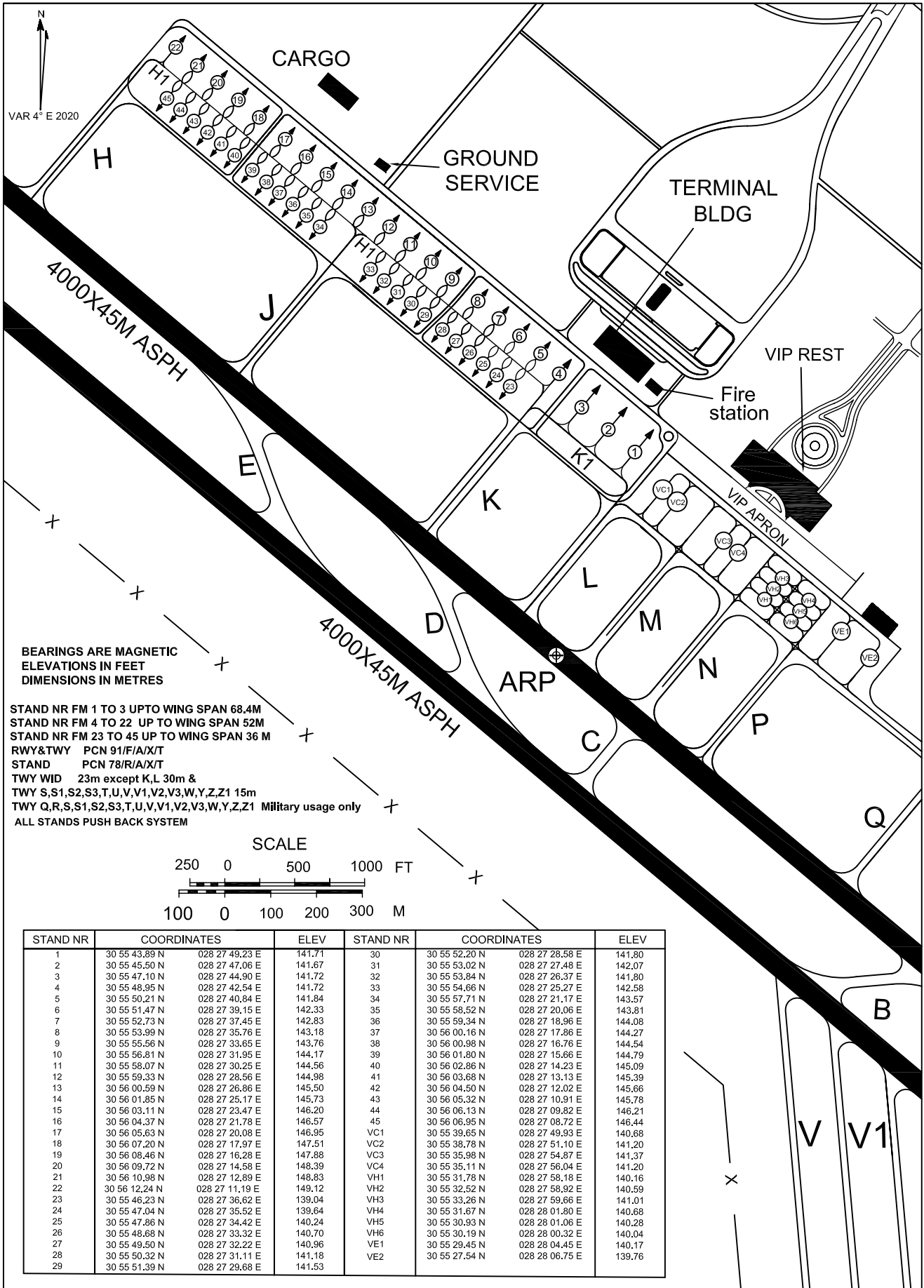
AIRCRAFT PARKING/  
DOCKING CHART-ICAO

APN ELEV 149FT

TWR	123.4
STAND BY	120.0
EMERG	121.5
FOLLOW ME	121.9

AL ALAMAIN /

AL ALAMAIN





For Simulation Use Only  
Not For Real Life

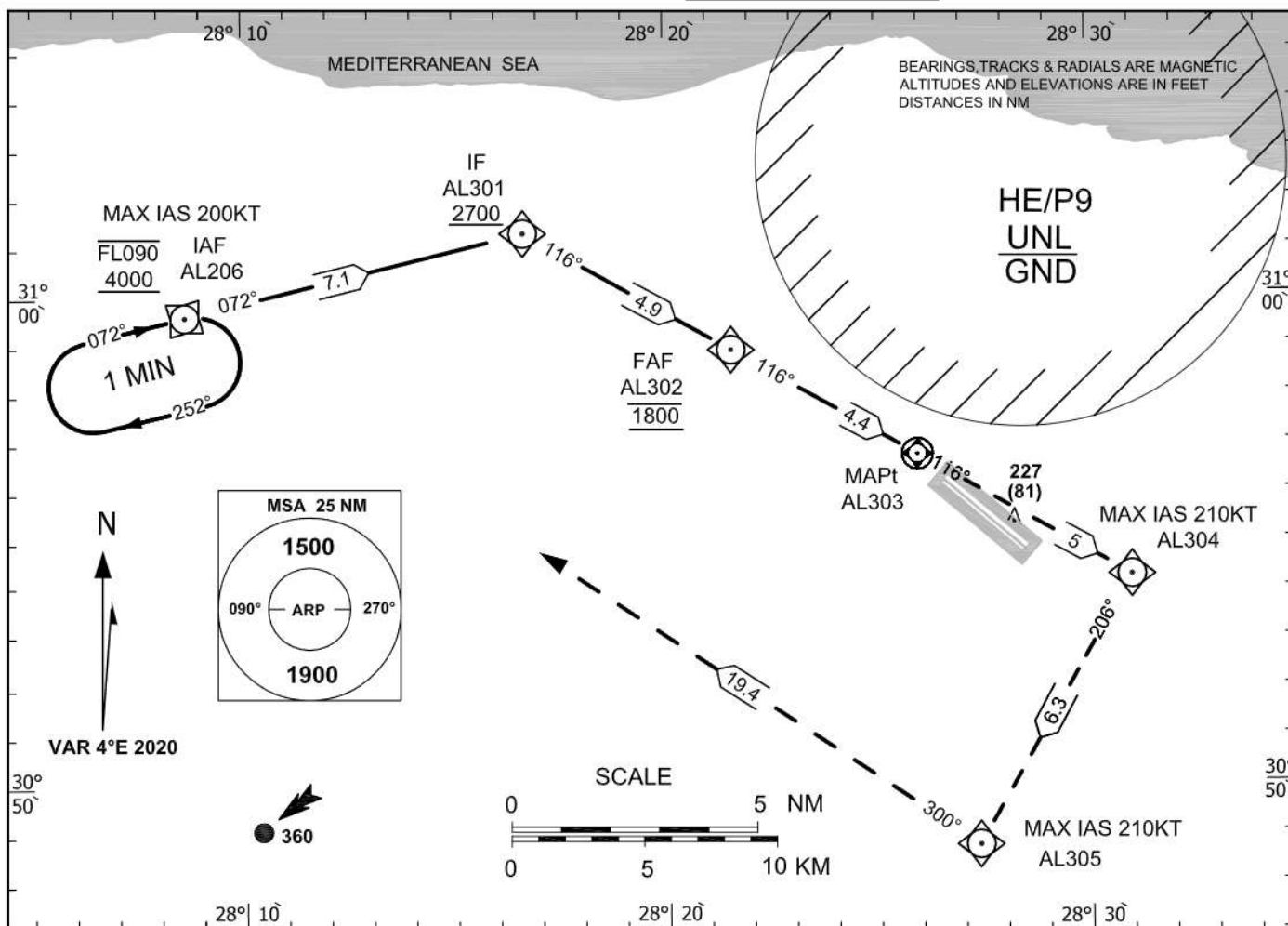
HEAL/DBB

**INSTRUMENT  
APPROACH  
CHART-ICAO**

AD ELEV 146 FT  
HEIGHTS RELATED TO  
AD ELEVATION

**TWR 123.4**  
**STAND BY 120.0**  
**EMERG 121.5**

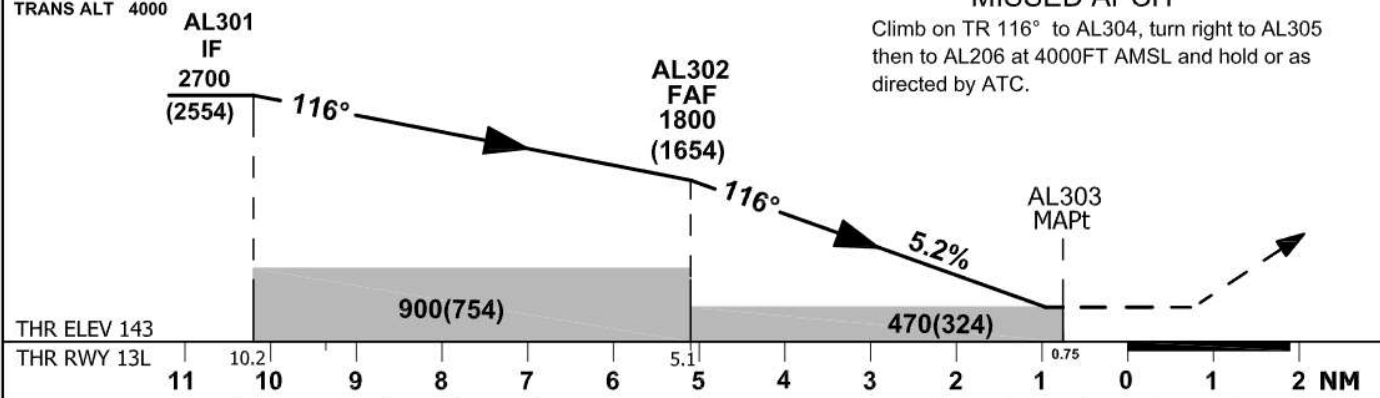
AL ALAMAIN / **AL ALAMAIN**  
**RNP RWY 13L**



TRANS LEVEL FL050  
TRANS ALT 4000

**MISSED APCH**

Climb on TR 116° to AL304, turn right to AL305 then to AL206 at 4000FT AMSL and hold or as directed by ATC.



OCA (OCH)	A	B	C	D	GND speed -Kts	70	90	100	120	140	160
	LNAV					470 (324)	372	478	531	637	743
						Descent angle(3.00°)					



For Simulation Use Only  
Not For Real Life

# HEAL/DBB

<b>INSTRUMENT APPROACH CHART-ICAO</b>	AD ELEV 146 FT HEIGHTS RELATED TO AD ELEVATION	TWR 123.4 STAND BY 120.0 EMERG 121.5	AL ALMAIN / AL ALMAIN <b>RNP RWY 13L</b>
---	--	--	---

### TABULAR DESCRIPTION

Serial Number	Path Descriptor	Waypoint Identifier	Fly-Over	Course °M(°T)	Magnetic Variation	Distance (NM)	Turn Direction	Altitude (FT)	Speed (Kts)	VPA°/TCH FT	Navigation Specification
010	IF	AL206	-	-	-4	-	-	- FL090 + 4000	-200	-	RNP APCH
020	TF	AL301	-	072(076.4)	-4	7.1	R	+2700	-	-	RNP APCH
030	TF	AL302	-	116(119.7)	-4	4.9	-	@1800	-	-	RNP APCH
040	TF	AL303	Y	116(119.7)	-4	4.4	-	-	-	-3.0/50	RNP APCH
050	TF	AL304	-	116(119.7)	-4	5	R	-	-210	-	RNP APCH
060	TF	AL305	-	206(209.8)	-4	6.3	R	-	-210	-	RNP APCH
070	TF	AL206	-	300(304.1)	-4	19.4	-	@4000	-200	-	RNP APCH
080	HM	AL206	-	072(076.4)	-4	1MIN	R	- FL090 + 4000	-200	-	RNP APCH

### Waypoint Coordinates

Waypoint Identifier	Coordinates
AL206	30° 59' 38.9" N 028° 08' 37.6" E
AL301	31° 01' 19.1" N 028° 16' 38.8" E
AL302	30° 58' 54.6" N 028° 21' 33.3" E
AL303	30° 56' 45.0" N 028° 25' 56.6" E
AL304	30° 54' 15.8" N 028° 30' 59.5" E
AL305	30° 48' 45.9" N 028° 27' 20.8" E



For Simulation Use Only  
Not For Real Life

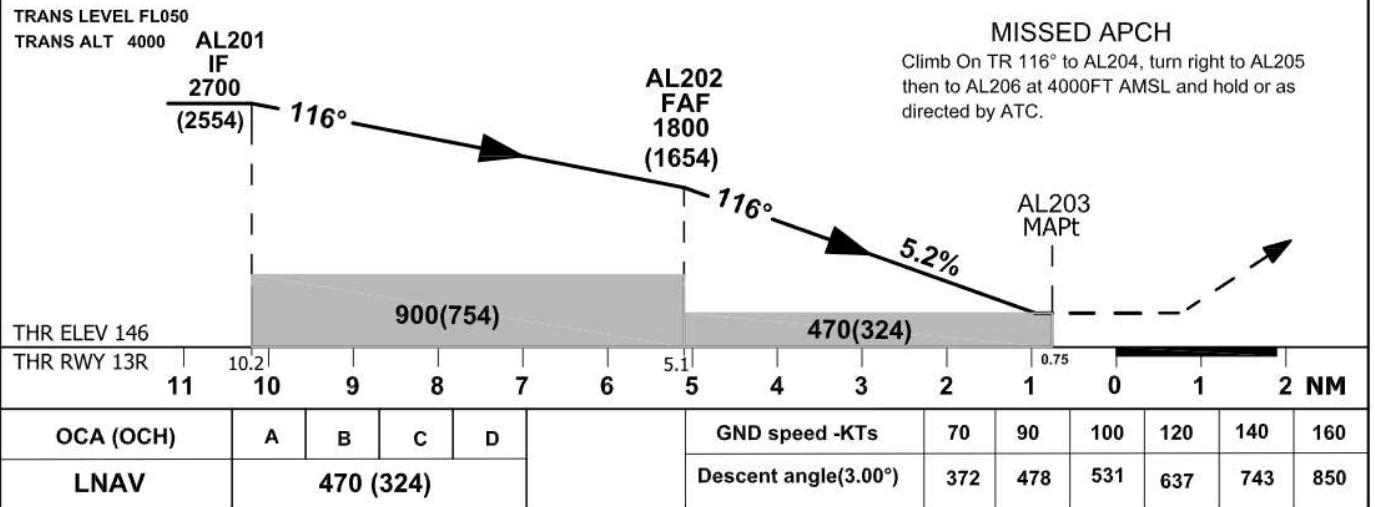
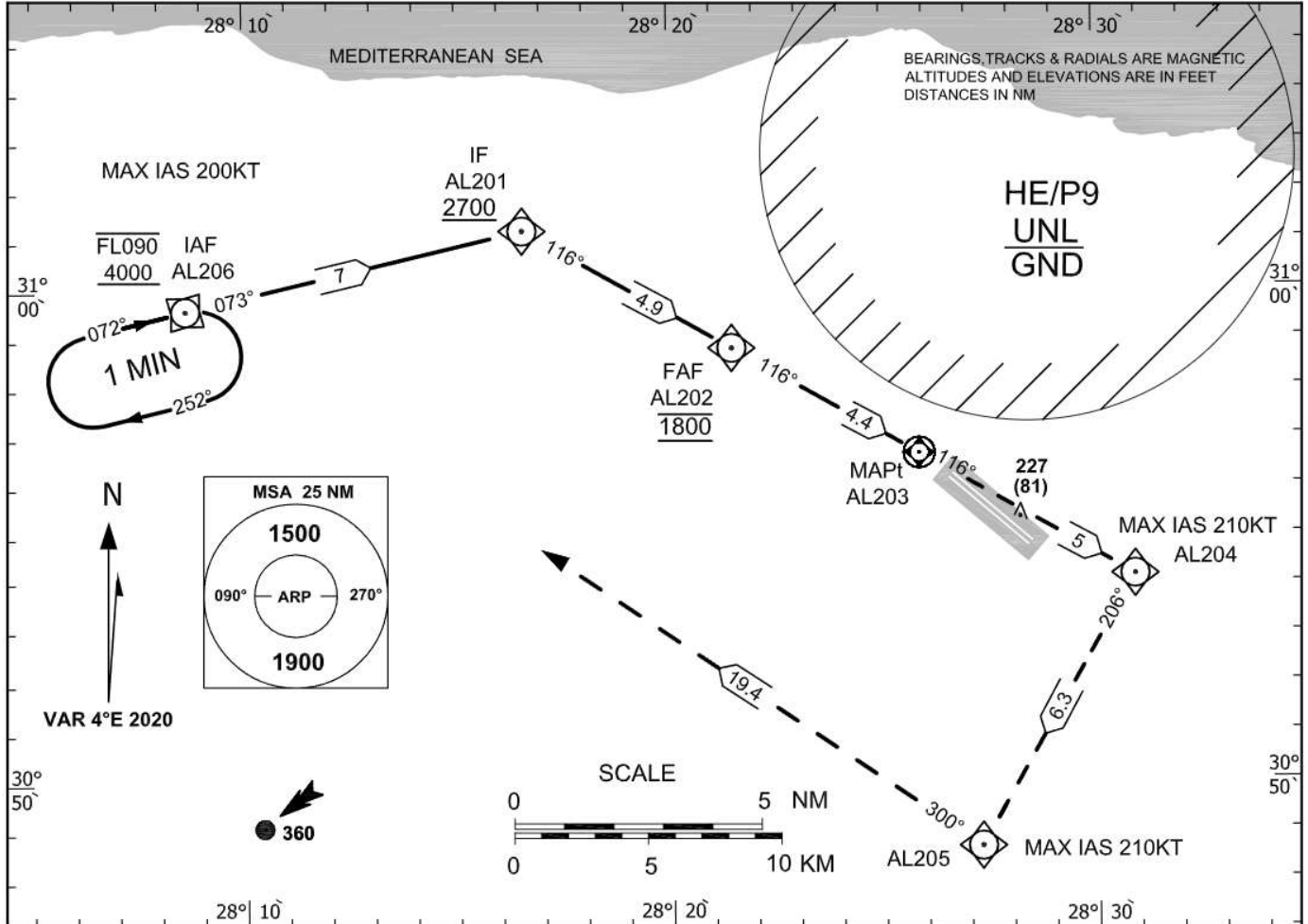
HEAL/DBB

**INSTRUMENT  
APPROACH  
CHART-ICAO**

AD ELEV 146 FT  
HEIGHTS RELATED TO  
AD ELEVATION

**TWR 123.4**  
**STAND BY 120.0**  
**EMERG 121.5**

AL ALAMAIN / **AL ALAMAIN**  
**RNP RWY 13R**





For Simulation Use Only  
Not For Real Life

HEAL/DBB

<b>INSTRUMENT APPROACH CHART-ICAO</b>	AD ELEV 146 FT HEIGHTS RELATED TO AD ELEVATION	TWR 123.4 STAND BY 120.0 EMERG 121.5	AL ALMAIN / AL ALMAIN RNP RWY 13R
---	--	--	--------------------------------------

**TABULAR DESCRIPTION**

Serial Number	Path Descriptor	Waypoint Identifier	Fly-Over	Course °M(°T)	Magnetic Variation	Distance (NM)	Turn Direction	Altitude (FT)	Speed (Kts)	VPA°/TCH FT	Navigation Specification
010	IF	AL206	-	-	-4	-	-	- FLO90 + 4000	-200	-	RNP APCH
020	TF	AL201	-	073(076.9)	-4	7.0	R	+2700	-	-	RNP APCH
030	TF	AL202	-	116(119.7)	-4	4.9	-	@1800	-	-	RNP APCH
040	TF	AL203	Y	116(119.7)	-4	4.4	-	-	-	-3.0/50	RNP APCH
050	TF	AL204	-	116(119.8)	-4	5	R	-	-210	-	RNP APCH
060	TF	AL205	-	206(209.8)	-4	6.3	R	-	-210	-	RNP APCH
070	TF	AL206	-	300(304.4)	-4	19.4	-	@4000	-200	-	RNP APCH
080	HM	AL206	-	072(076.4)	-4	1MIN	R	- FLO90 + 4000	-200	-	RNP APCH

**Waypoint Coordinates**

Waypoint Identifier	Coordinates
AL206	30° 59' 38.9" N 028° 08' 37.6" E
AL201	31° 01' 13.9" N 028° 16' 33.7" E
AL202	30° 58' 49.4" N 028° 21' 28.1" E
AL203	30° 56' 39.9" N 028° 25' 51.5" E
AL204	30° 54' 10.6" N 028° 30' 54.3" E
AL205	30° 48' 40.7" N 028° 27' 15.6" E



For Simulation Use Only  
Not For Real Life

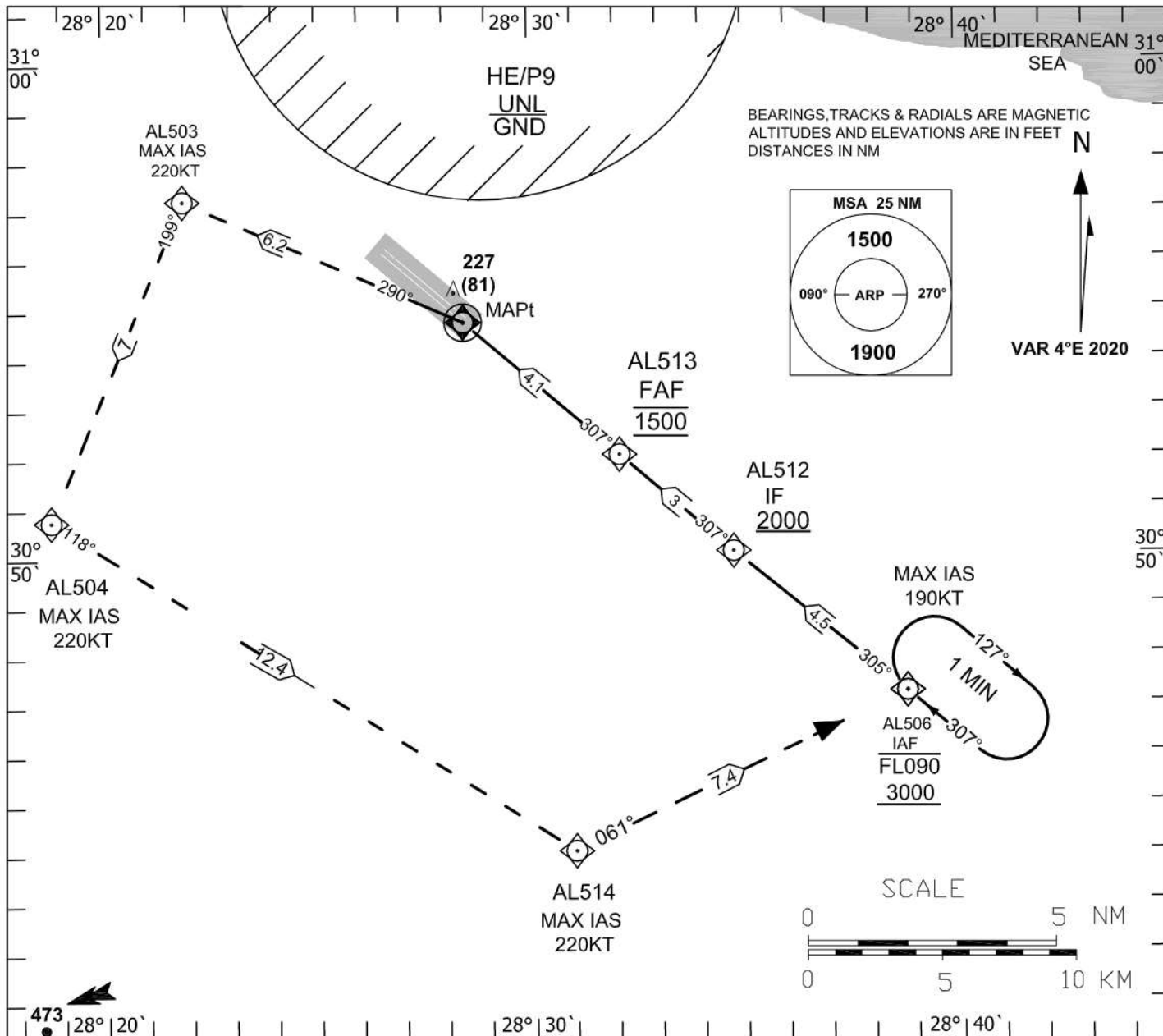
HEAL/DBB

**INSTRUMENT  
APPROACH  
CHART-ICAO**

AD ELEV 146 FT  
HEIGHTS RELATED TO  
AD ELEVATION

TWR 123.4  
STAND BY 120.0  
EMERG 121.5

AL ALAMAIN / **AL ALAMAIN**  
**RNP RWY 31L**



**MISSED APCH**

Climb on TR 290° to AL503, AL504, AL514  
then to AL506 at 3000FT AMSL and hold or  
as directed by ATC.

THR ELEV 139  
THR RWY 31L

RW31L  
MAPt

5.2%

AL513  
FAF  
1500  
(1354)

AL512  
IF  
2000  
(1854)

TRANS LEVEL FL050  
TRANS ALT 4000

460 (314)

700 (554)

3 2 1 0 1 2 3 4 5 6 7 8 NM

OCA (OCH)	A	B	C	D	GND speed -Kts	70	90	100	120	140	160
LNAV	460 (314)				Descent angle(3.00°)	372	478	531	637	743	850



For Simulation Use Only  
Not For Real Life

# HEAL/DBB

<b>INSTRUMENT APPROACH CHART-ICAO</b>	AD ELEV 146FT HEIGHTS RELATED TO AD ELEV.	TWR 123.4 Stand by 120.0 EMERG 121.5	<b>AL ALMAIN / AL ALMAIN RNP RWY 31L</b>
---	---	--	--

<b>TABULAR DESCRIPTION</b>											
Serial Number	Path Descriptor	Waypoint Identifier	Fly-Over	Course °M(°T)	Magnetic Variation	Distance (NM)	Turn Direction	Altitude(ft)	Speed (Kts)	VPA <sup>2</sup> /TCH(FT)	Navigation Specification
010	IF	AL506	-	-	-4	-	-	-FLO90 +3000	-190	-	RNP APCH
020	TF	AL512	-	305(309.4)	-4	4.5	-	+2000	-	-	RNP APCH
030	TF	AL513	-	307(310.8)	-4	3.0	-	@1500	-	-	RNP APCH
040	TF	RW31L	Y	307(310.8)	-4	4.1	-	-	-	-3.0/50	RNP APCH
050	TF	AL503	-	290(293.8)	-4	6.2	L	-	-220	-	RNP APCH
060	TF	AL504	-	199(202.7)	-4	7.0	L	-	-220	-	RNP APCH
070	TF	AL514	-	118(122.4)	-4	12.4	L	-	-220	-	RNP APCH
080	TF	AL506	-	061(064.7)	-4	7.4	-	@3000	-190	-	RNP APCH
090	HM	AL506	-	307(310.8)	-4	1 MIN	R	-FLO90 +3000	-190	-	RNP APCH

## WAYPOINT LIST

Waypoint Identifier	Coordinates
AL506	30° 47' 14.0"N 028° 38' 44.6"E
AL512	30° 50' 05.4"N 028° 34' 42.7"E
AL513	30° 52' 03.7"N 028° 32' 03.9"E
RW31L	30° 54' 45.77"N 028° 28' 25.93"E
AL503	30° 57' 14.7"N 028° 21' 53.1"E
AL 504	30° 50' 46.2"N 028° 18' 44.8"E
AL514	30° 44' 03.2"N 028° 30' 57.3"E





For Simulation Use Only  
Not For Real Life

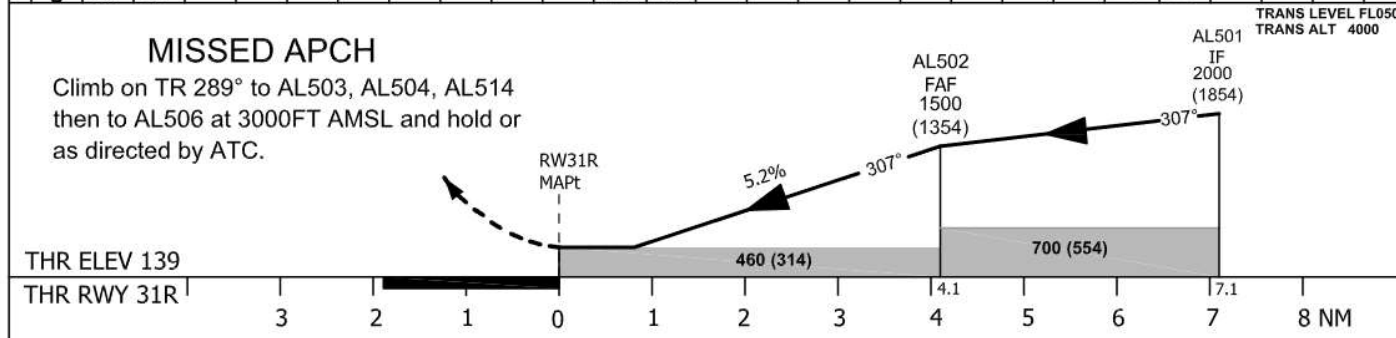
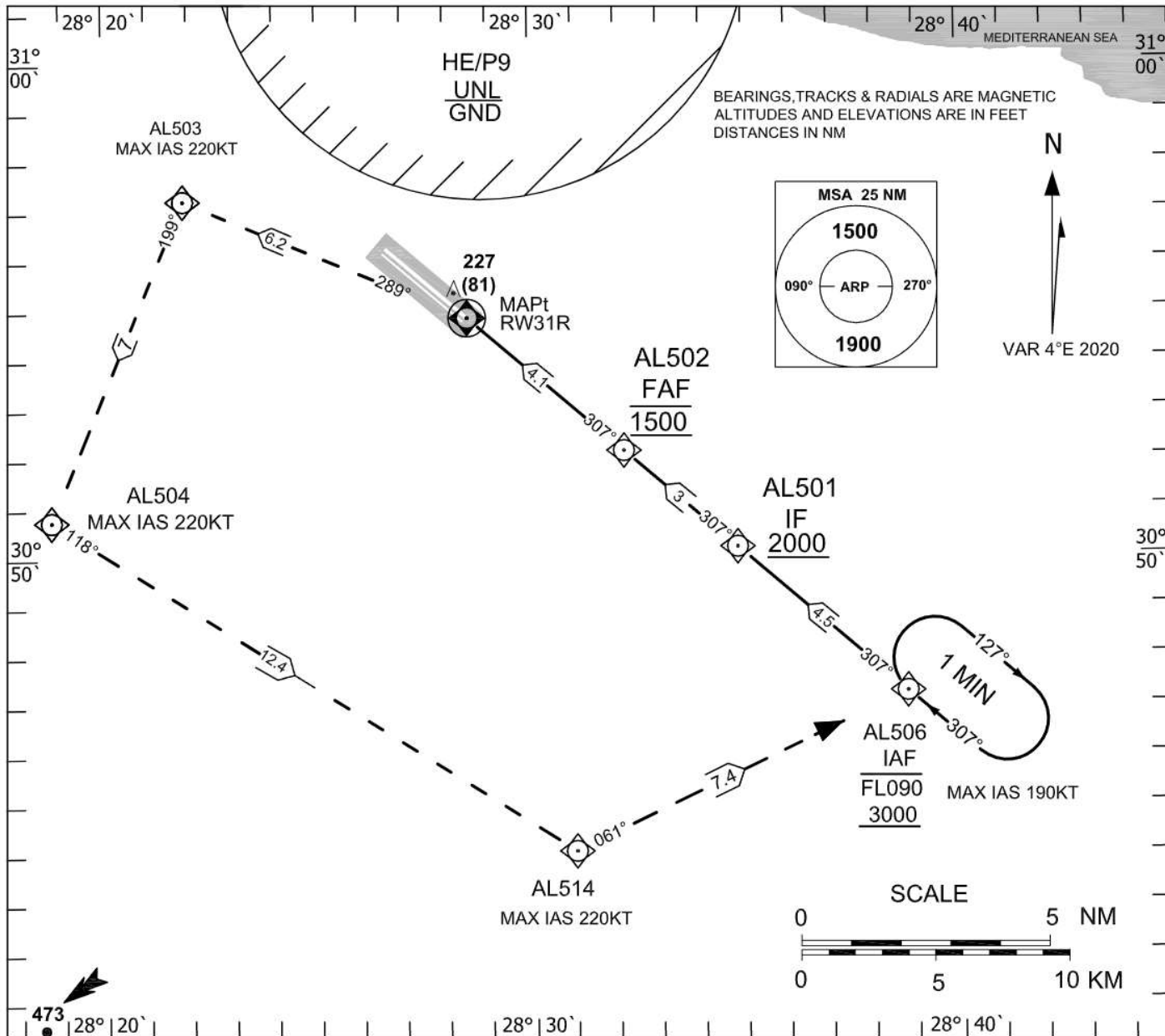
# HEAL/DBB

## INSTRUMENT APPROACH CHART-ICAO

AD ELEV 146 FT  
HEIGHTS RELATED TO  
AD ELEVATION

TWR	123.4
STAND BY	120.0
EMERG	121.5

AL ALAMAIN / **AL ALAMAIN**  
**RNP RWY 31R**



OCA (OCH)	A	B	C	D		GND speed -Kts	70	90	100	120	140	160
LNAV	460(314)					Descent angle(3.00°)	372	478	531	637	743	850



For Simulation Use Only  
Not For Real Life

# HEAL/DBB

<b>INSTRUMENT APPROACH CHART-ICAO</b>	AD ELEV 146FT	TWR	123.4	<b>AL ALMAIN / AL ALMAIN RNP RWY 31R</b>
	HEIGHTS RELATED TO AD ELEV.	EMERG	121.5	
		Stand by	120.0	

### TABULAR DESCRIPTION

Serial Number	Path Descriptor	Waypoint Identifier	Fly-Over	Course °M(°T)	Magnetic Variation	Distance (NM)	Turn Direction	Altitude(ft)	Speed (Kts)	VPA°/TCH(FT)	Navigation Specification
010	IF	AL506	-	-	-4	-	-	-FLO90 +3000	-190	-	RNP APCH
020	TF	AL501	-	307(310.8)	-4	4.5	-	+2000	-	-	RNP APCH
030	TF	AL502	-	307(310.8)	-4	3.0	-	@1500	-	-	RNP APCH
040	TF	RW31R	Y	307(310.8)	-4	4.1	-	-	-	-3.0/50	RNP APCH
050	TF	AL503	-	289(292.8)	-4	6.2	L	-	-220	-	RNP APCH
060	TF	AL504	-	199(202.7)	-4	7.0	L	-	-220	-	RNP APCH
070	TF	AL514	-	118(122.4)	-4	12.4	L	-	-220	-	RNP APCH
080	TF	AL506	-	061(64.6)	-4	7.4	-	@3000	-190	-	RNP APCH
090	HM	AL506	-	307(310.8)	-4	1 MIN	R	-FLO90 +3000	-190	-	RNP APCH

### WAYPOINT LIST

Waypoint Identifier	Coordinates
AL506	30° 47' 14.0"N 028° 38' 44.6"E
AL501	30° 50' 10.5"N 028° 34' 47.9"E
AL502	30° 52' 08.4"N 028° 32' 09.6"E
RW31R	30° 54' 50.94"N 028° 28' 31.08"E
AL503	30° 57' 14.7"N 028° 21' 53.1"E
AL 504	30° 50' 46.2"N 028° 18' 44.8"E
AL514	30° 44' 03.2"N 028° 30' 57.3"E