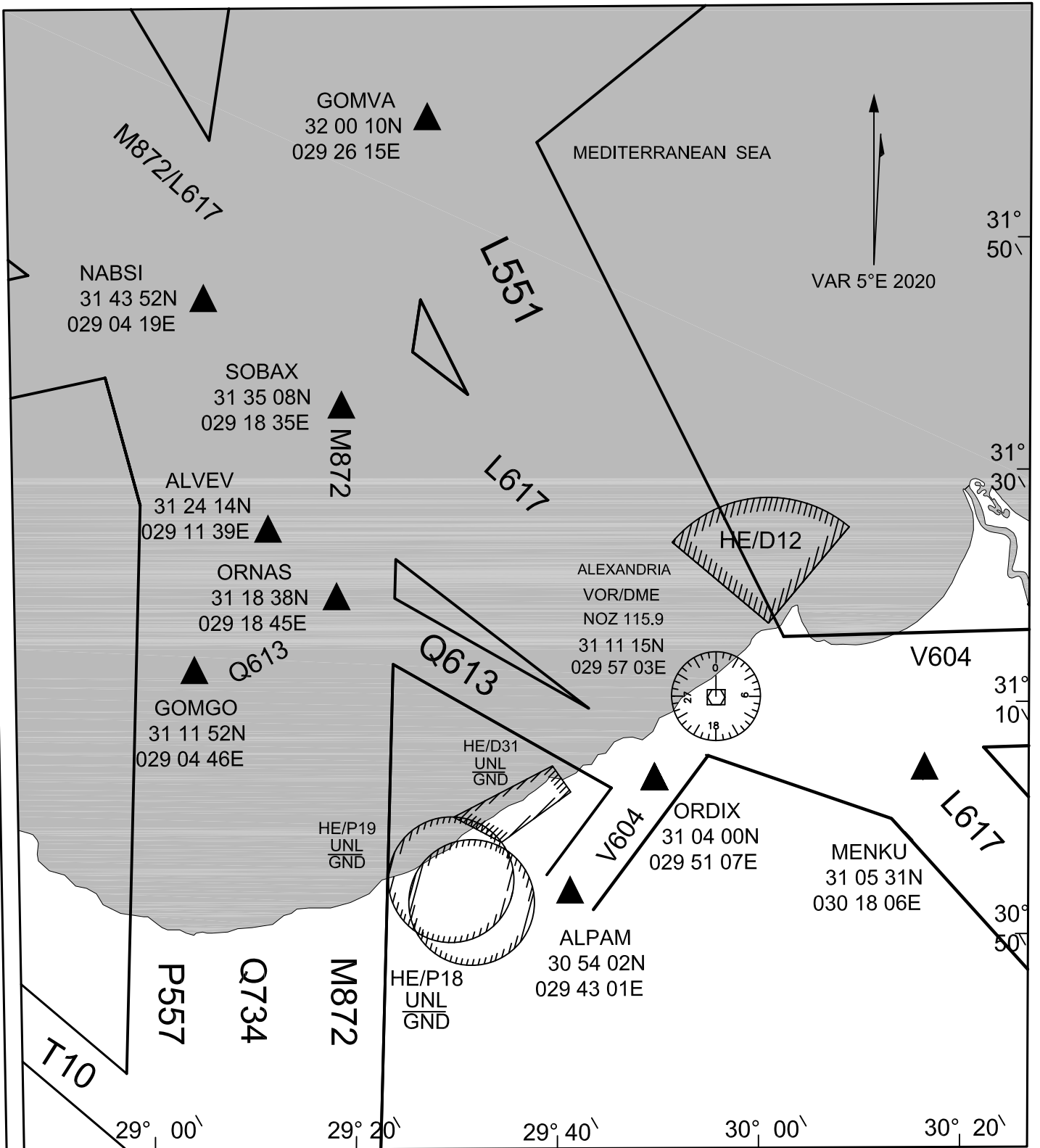




# BORG EL ARAB RADAR APPROACH





For Simulation Use Only  
Not For Real Life

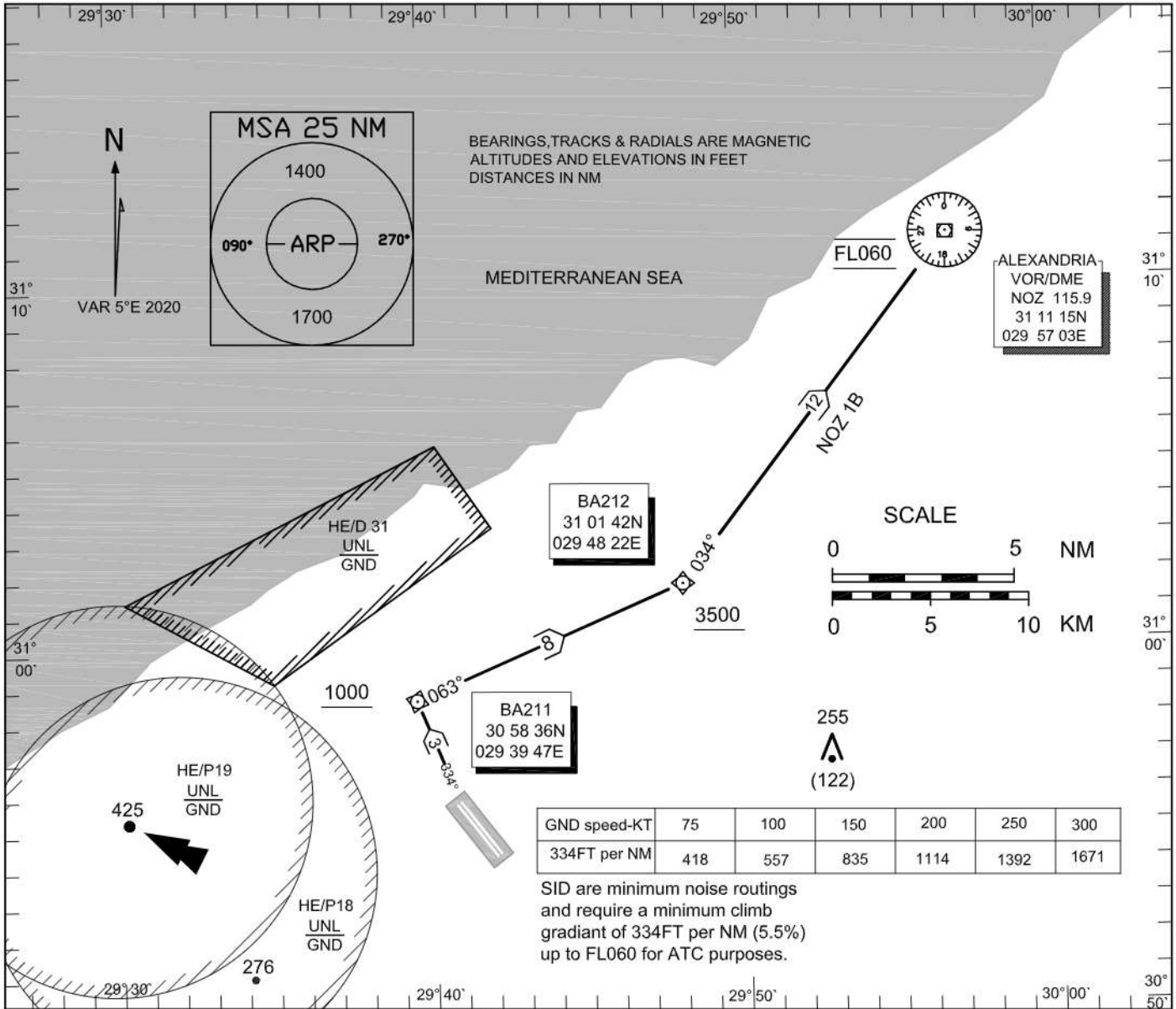
HEBA/HBE

STANDARD DEPARTURE CHART -  
INSTRUMENT (SID) -ICAO

AD ELEV 177 FT  
HEIGHTS RELATED TO  
THR RWY 32R ELEV 133FT

TWR	119.1
GND	121.9
APP	122.8
RADAR APP	122.3
EMERG	121.5

ALEXANDRIA / **BORG EL ARAB**  
**RNAV (GNSS)**  
**RWY 32R**



SID	AWY	ROUTING
NOZ 1B	V604	Climb on track 334° to BA211(1000FT+), then turn right to BA212 (3500FT+), then to NOZ VOR/DME(FL060).



For Simulation Use Only  
Not For Real Life

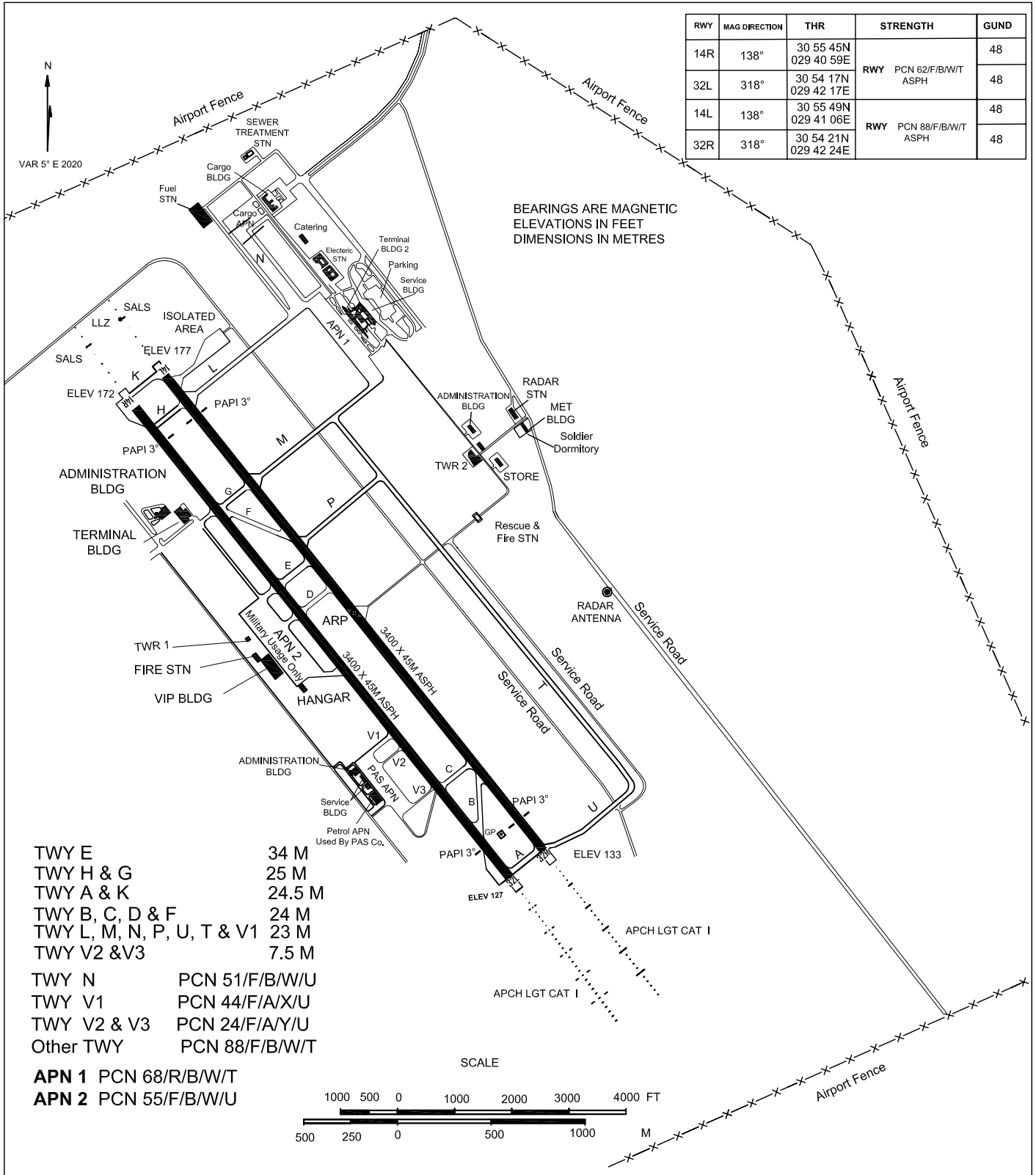
HEBA/HBE

**AERODROME CHART-ICAO** 30 55 05N  
029 41 45E ELEV 177FT

TWR	119.1
ALTN	118.9
GND	121.9
APP	122.8
RADAR APP	122.3
EMERG	121.5

ALEXANDRIA /  
**BORG EL ARAB**

RWY	MAG DIRECTION	THR	STRENGTH	GUND
14R	138°	30 55 45N 029 40 59E	RWY PCN 62/F/B/W/T ASPH	48
32L	318°	30 54 17N 029 42 17E		48
14L	138°	30 55 49N 029 41 06E	RWY PCN 88/F/B/W/T ASPH	48
32R	318°	30 54 21N 029 42 24E		48



- TWY E 34 M
- TWY H & G 25 M
- TWY A & K 24.5 M
- TWY B, C, D & F 24 M
- TWY L, M, N, P, U, T & V1 23 M
- TWY V2 & V3 7.5 M
- TWY N PCN 51/F/B/W/U
- TWY V1 PCN 44/F/A/X/U
- TWY V2 & V3 PCN 24/F/A/Y/U
- Other TWY PCN 88/F/B/W/T
- APN 1** PCN 68/R/B/W/T
- APN 2** PCN 55/F/B/W/U



For Simulation Use Only  
Not For Real Life

HEBA/HBE

**AIRCRAFT PARKING/  
DOCKING CHART-ICAO.**

APN ELEV 160FT

TWR	119.1
ALT	118.9
GND	121.9
APP	122.8
RADAR APP	122.3
EMERG	121.5

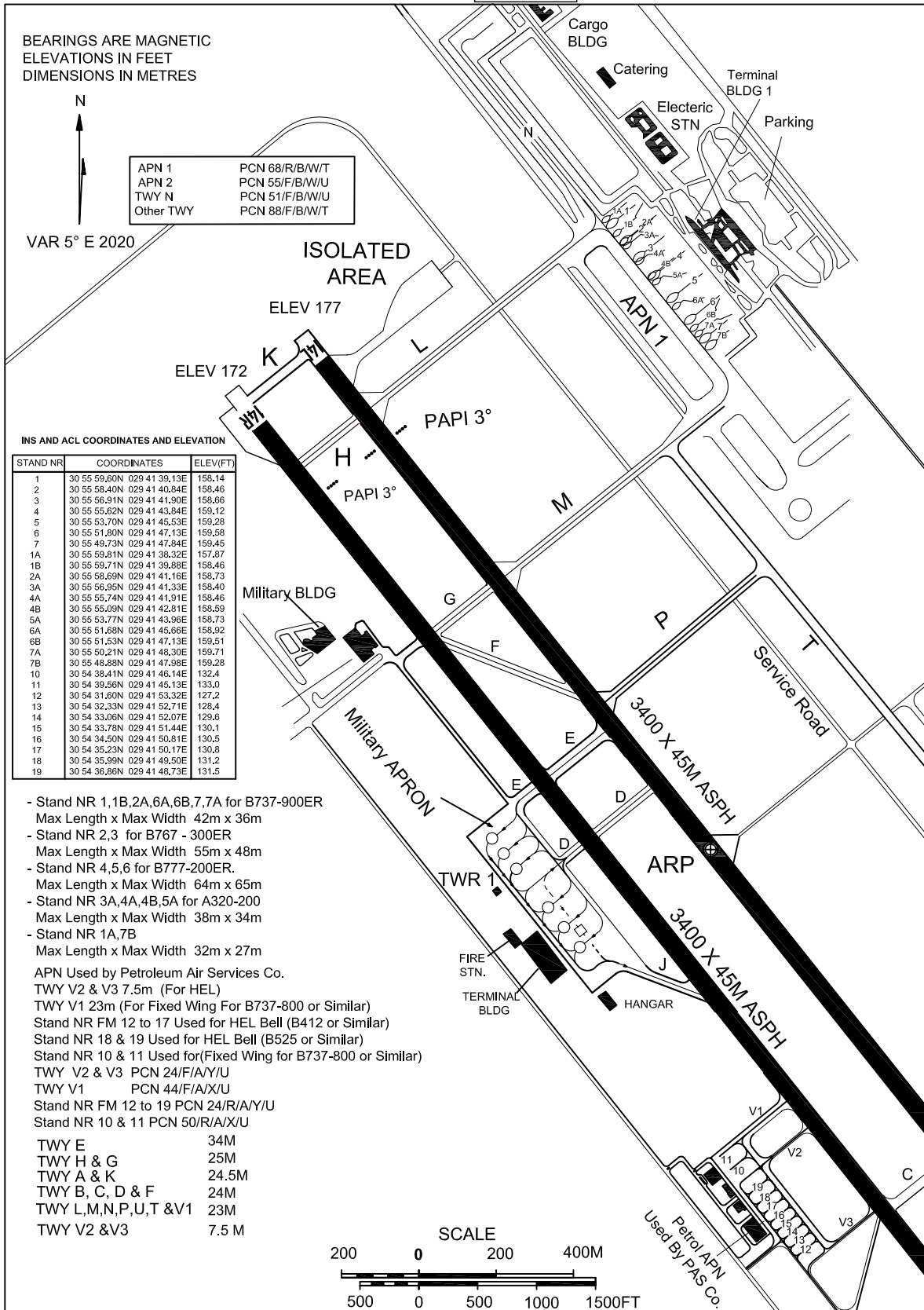
ALEXANDRIA / **BORG EL ARAB**

BEARINGS ARE MAGNETIC  
ELEVATIONS IN FEET  
DIMENSIONS IN METRES



VAR 5° E 2020

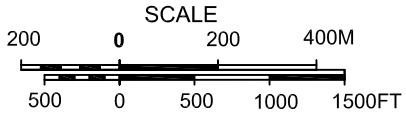
APN 1	PCN 68/R/B/W/T
APN 2	PCN 55/F/B/W/U
TWY N	PCN 51/F/B/W/U
Other TWY	PCN 88/F/B/W/T



**INS AND ACL COORDINATES AND ELEVATION**

STAND NR	COORDINATES	ELEV(FT)
1	30 55 59,60N 029 41 38,13E	158,14
2	30 55 59,40N 029 41 40,84E	158,46
3	30 55 56,91N 029 41 41,90E	158,66
4	30 55 55,62N 029 41 43,84E	159,12
5	30 55 53,70N 029 41 45,53E	159,28
6	30 55 51,80N 029 41 47,13E	159,58
7	30 55 49,73N 029 41 47,84E	159,45
1A	30 55 59,81N 029 41 38,32E	157,87
1B	30 55 59,71N 029 41 39,86E	158,46
2A	30 55 58,69N 029 41 41,16E	158,73
3A	30 55 56,95N 029 41 41,33E	158,40
4A	30 55 55,74N 029 41 41,91E	158,46
4B	30 55 55,09N 029 41 42,81E	158,59
5A	30 55 53,77N 029 41 43,96E	158,73
6A	30 55 51,68N 029 41 45,66E	158,92
7A	30 55 51,53N 029 41 47,13E	159,51
7B	30 55 50,21N 029 41 48,30E	159,71
9B	30 55 48,88N 029 41 47,98E	159,28
10	30 54 38,41N 029 41 46,14E	132,4
11	30 54 39,56N 029 41 45,13E	133,0
12	30 54 31,60N 029 41 53,32E	127,2
13	30 54 32,33N 029 41 52,71E	128,4
14	30 54 33,06N 029 41 52,07E	129,6
15	30 54 33,78N 029 41 51,44E	130,1
16	30 54 34,50N 029 41 50,81E	130,5
17	30 54 35,23N 029 41 50,17E	130,8
18	30 54 35,99N 029 41 49,50E	131,2
19	30 54 36,86N 029 41 48,73E	131,5

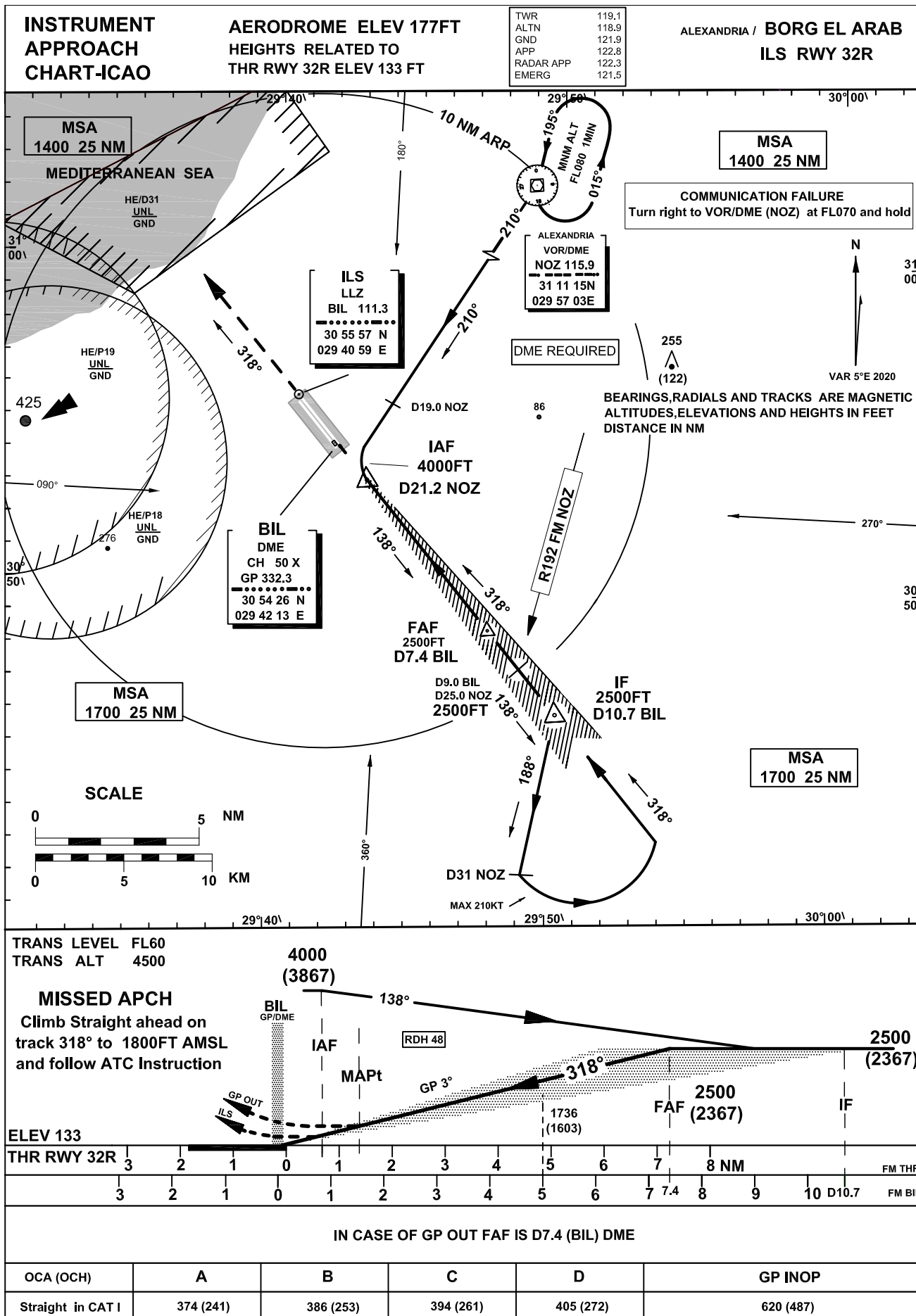
- Stand NR 1, 1B, 2A, 6A, 6B, 7, 7A for B737-900ER  
Max Length x Max Width 42m x 36m
- Stand NR 2, 3 for B767 - 300ER  
Max Length x Max Width 55m x 48m
- Stand NR 4, 5, 6 for B777-200ER.  
Max Length x Max Width 64m x 65m
- Stand NR 3A, 4A, 4B, 5A for A320-200  
Max Length x Max Width 38m x 34m
- Stand NR 1A, 7B  
Max Length x Max Width 32m x 27m
- APN Used by Petroleum Air Services Co.
- TWY V2 & V3 7.5m (For HEL)
- TWY V1 23m (For Fixed Wing For B737-800 or Similar)
- Stand NR FM 12 to 17 Used for HEL Bell (B412 or Similar)
- Stand NR 18 & 19 Used for HEL Bell (B525 or Similar)
- Stand NR 10 & 11 Used for (Fixed Wing for B737-800 or Similar)
- TWY V2 & V3 PCN 24/F/A/Y/U
- TWY V1 PCN 44/F/A/X/U
- Stand NR FM 12 to 19 PCN 24/R/A/Y/U
- Stand NR 10 & 11 PCN 50/R/A/X/U
- TWY E 34M
- TWY H & G 25M
- TWY A & K 24.5M
- TWY B, C, D & F 24M
- TWY L, M, N, P, U, T & V1 23M
- TWY V2 & V3 7.5 M





For Simulation Use Only  
Not For Real Life

HEBA/HBE





For Simulation Use Only  
Not For Real Life

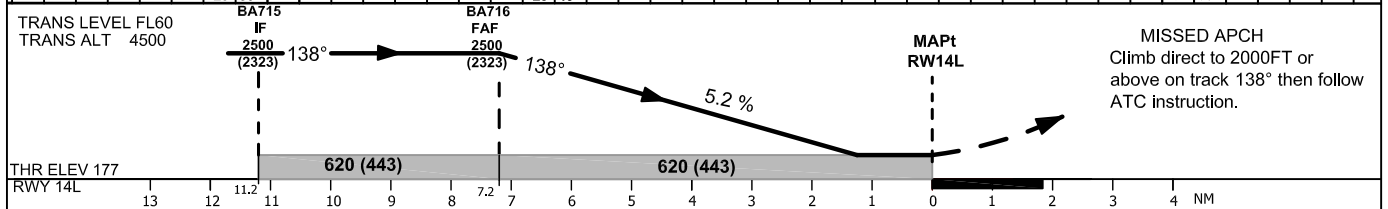
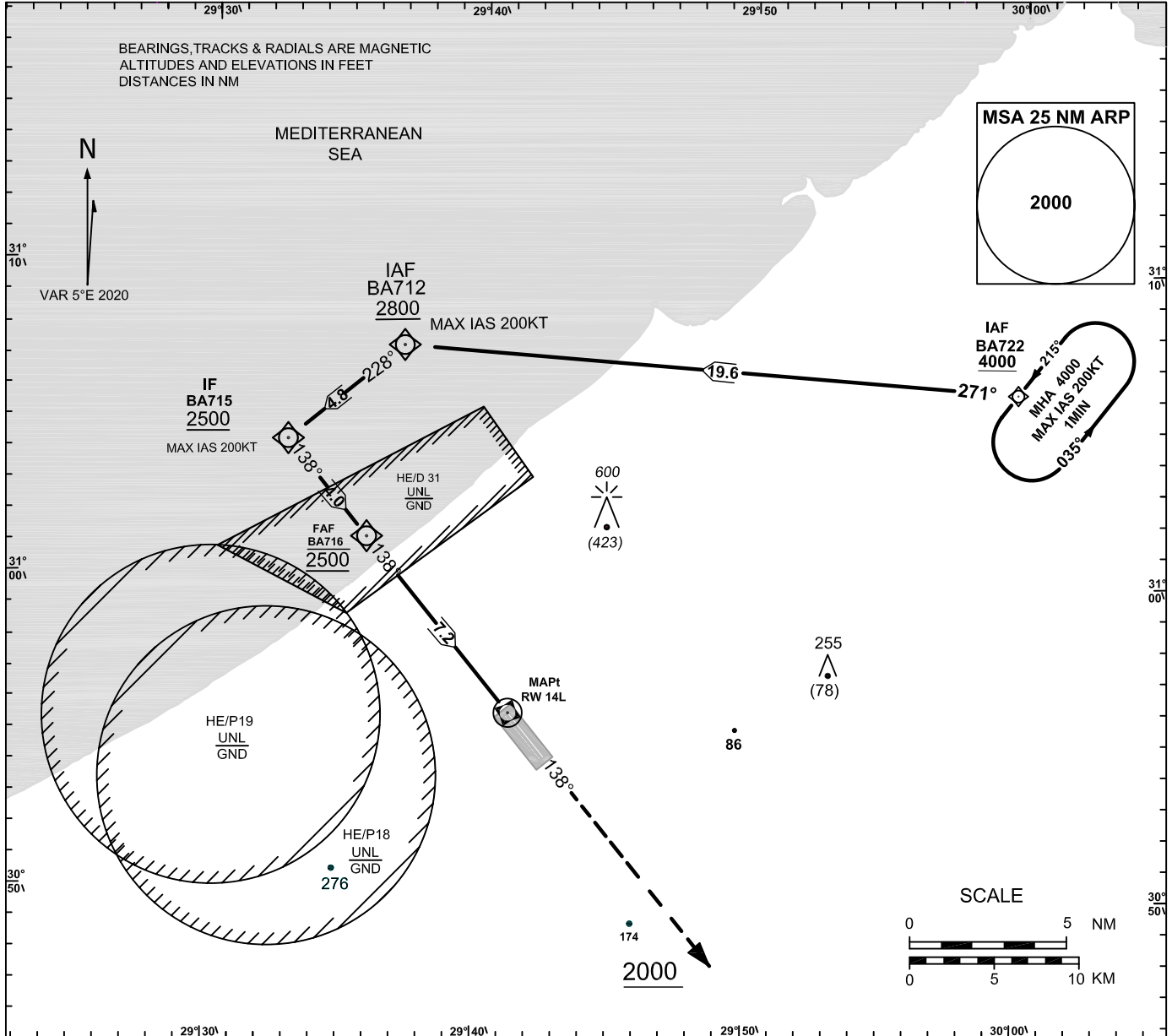
HEBA/HBE

INSTRUMENT APPROACH  
CHART-ICAO

AD ELEV 177 FT  
HEIGHTS RELATED TO  
AD ELEV

TWR	119.1
ALTN	118.9
GND	121.9
APP	122.8
RADAR APP	122.3
EMERG	121.5

ALEXANDRIA / BORG EL ARAB  
RNP RWY 14L



OCA(OCH)	A	B	C	D
LNAV	620 (443)			

GND speed -KT	70	90	100	120	140	160
Descent angle(3.00°)	372	478	531	637	743	850



<b>Instrument Approach CHART-ICAO</b>	AD ELEV 177FT HEIGHTS RELATED TOAD ELEV	TWR 119.1 ALTN 118.9 GND 121.9 APP 122.8 RADAR APP 122.3 EMERG 121.5	<b>ALEXANDRIA / BORG EL ARAB RNP RWY 14L</b>
---	---	---	--

**TABULAR DESCRIPTION**

Serial Number	Path Descriptor	Waypoint Identifier	Fly-Over	Course °M(°T)	Magnetic Variation	Distance (NM)	Turn Direction	Altitude(ft)	Speed (Kts)	VPA°/TCH (FT)	Navigation Specification
010	IF	BA722	-	-	-5	-	-	+4000	-200	-	RNP APCH
020	TF	BA712	-	271(276.4)		19.6	L	+2800	-200	-	RNP APCH
030	TF	BA715	-	228(232.8)		4.8	L	+2500	-200	-	RNP APCH
040	TF	BA716	-	138(142.8)		4.0	-	@2500	-	-	RNP APCH
050	TF	RW14L	Y	138(142.8)		7.2	-	-	-	-3.0/50	RNP APCH
060	CA	-	-	138(142.8)		-	-	+2000	-	-	RNP APCH

010	HM	BA722	-	215(220.0)	-5	1 MIN	L	+4000	-200	-	RNP APCH
-----	----	-------	---	------------	----	-------	---	-------	------	---	----------

**WAYPOINT LIST**

Waypoint Identifier	Coordinates
BA722	31°05' 30.0"N 030° 00' 21.0" E
BA712	31°07' 39.6" N 029° 37' 38.4" E
BA715	31° 04' 46.4" N 029° 33' 13.2" E
BA716	31° 01' 35.0" N 029° 36' 02.1" E
RW14L	30 55 49.32" N 029 41 06.31"E



For Simulation Use Only  
Not For Real Life

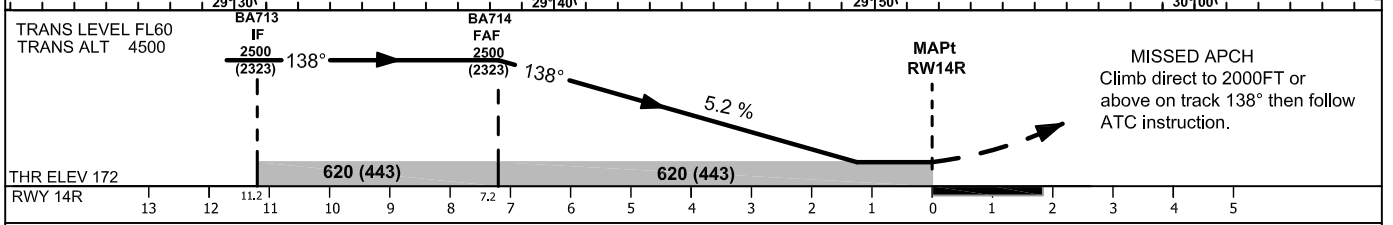
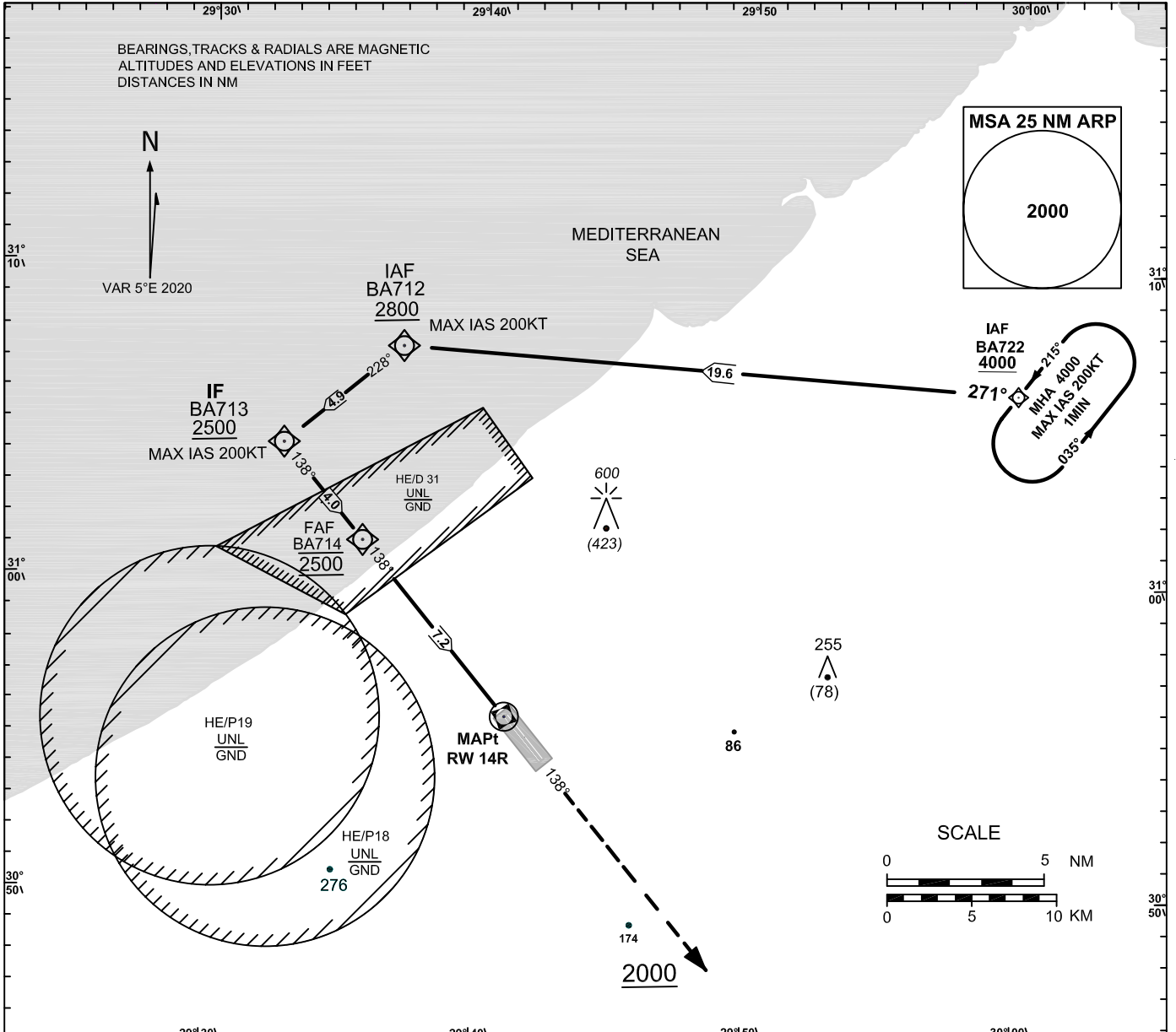
HEBA/HBE

INSTRUMENT APPROACH  
CHART-ICAO

AD ELEV 177 FT  
HEIGHTS RELATED TO  
AD ELEV

TWR	119.1
GND	121.9
APP	122.8
RADAR APP	122.3
EMERG	121.5

ALEXANDRIA / BORG EL ARAB  
RNP RWY 14R



OCA(OCH)	A	B	C	D
LNAV	620 (443)			

GND speed -KT	70	90	100	120	140	160
Descent angle(3.00°)	372	478	531	637	743	850





<b>Instrument Approach CHART-ICAO</b>	AD ELEV 177FT HEIGHTS RELATED TO AD ELEV	TWR 119.1 GND 121.9 APP 122.8 RADAR APP 122.3 EMERG 121.5	<b>ALEXANDRIA/BORG EL ARAB RNP RWY 14R</b>
---	---	---	--

**TABULAR DESCRIPTION**

Serial Number	Path Descriptor	Waypoint Identifier	Fly-Over	Course °M(°T)	Magnetic Variation	Distance (NM)	Turn Direction	Altitude(ft)	Speed (Kts)	VPA°/TCH (FT)	Navigation Specification
010	IF	BA722	-	-	-5	-	-	+4000	-200	-	RNP APCH
020	TF	BA712	-	271(276.4)		19.6	L	+2800	-200	-	RNP APCH
030	TF	BA713	-	228(232.8)		4.9	L	+2500	-200	-	RNP APCH
040	TF	BA714	-	138(142.8)		4.0	-	@2500	-	-	RNP APCH
050	TF	RW14R	Y	138(142.8)		7.2	-	-	-	-3.0/50	RNP APCH
060	CA	-	-	138(142.8)		-	-	+2000	-	-	RNP APCH
010	HM	BA722	-	215(220.0)	-5	1 MIN	L	+4000	-200	-	RNP APCH

**WAYPOINT LIST**

Waypoint Identifier	Coordinates
BA722	31°05' 30.0"N 030° 00' 21.0" E
BA712	31°07' 39.6" N 029° 37' 38.4" E
BA713	31° 04' 41.9" N 029° 33' 06.3" E
BA714	31° 01' 30.4" N 029° 35' 55.2" E
RW14R	30° 55' 44.78" N 029° 40' 59.41" E



For Simulation Use Only  
Not For Real Life

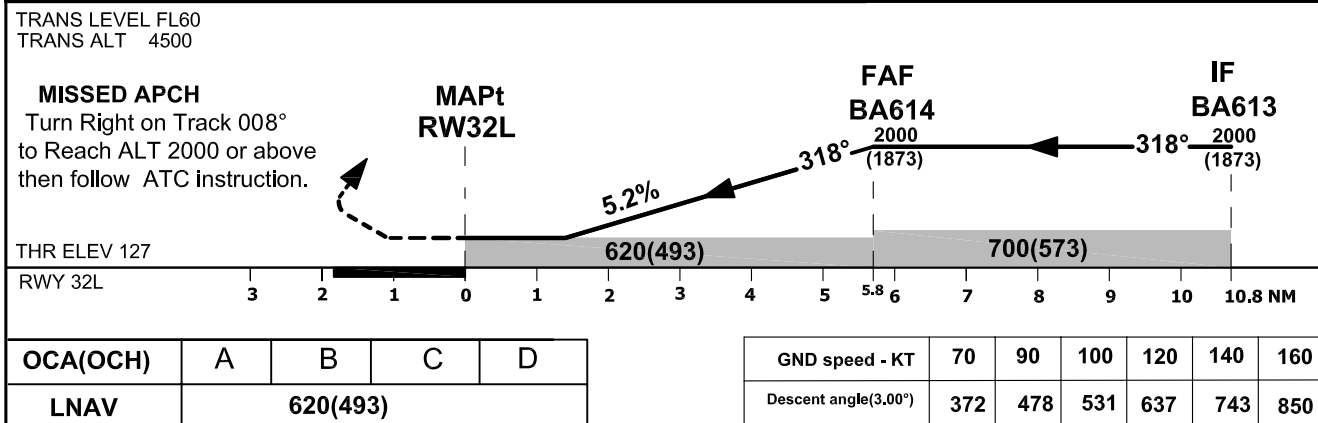
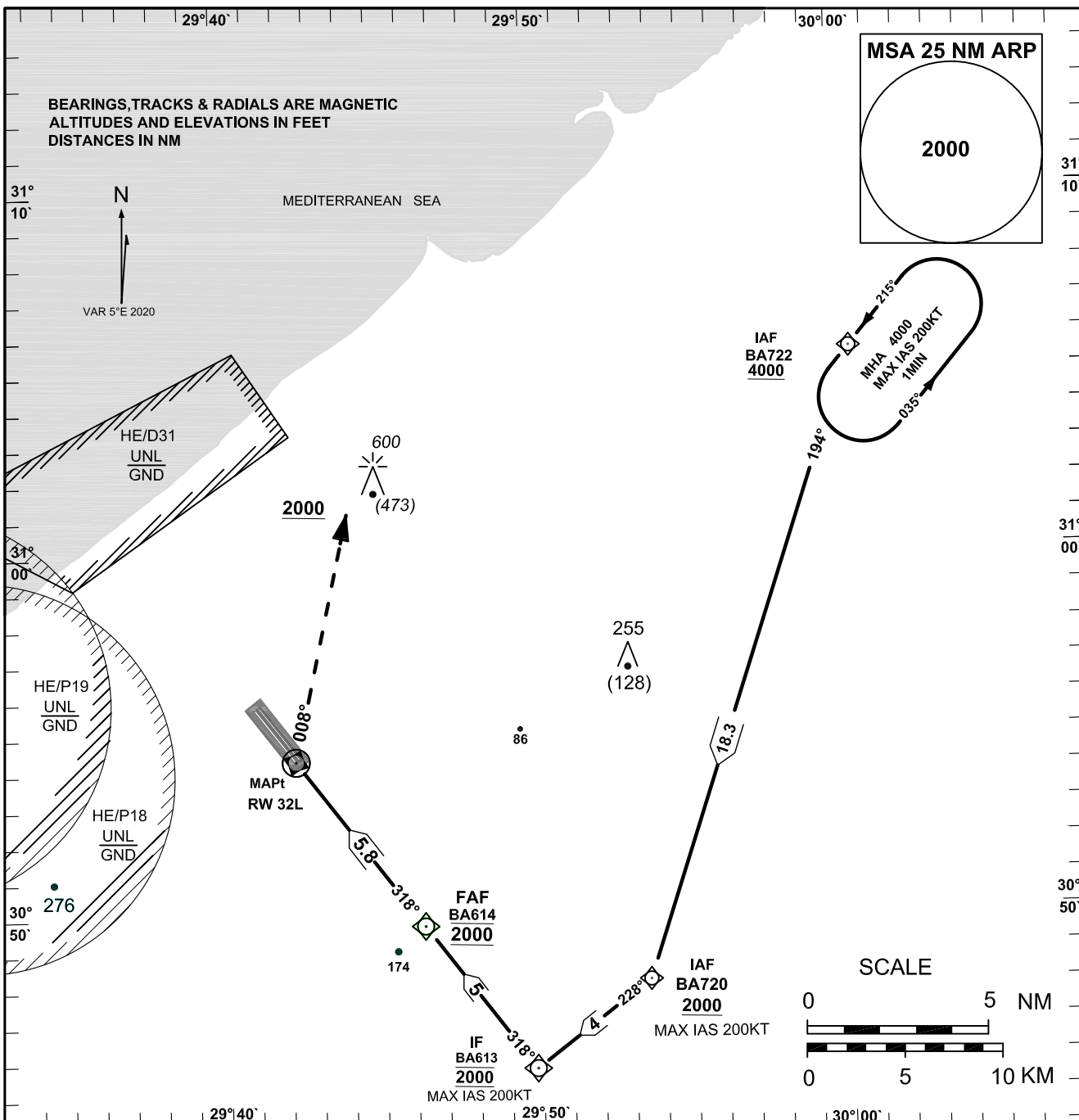
HEBA/HBE

INSTRUMENT APPROACH  
CHART-ICAO

AD ELEV 177 FT  
HEIGHTS RELATED TO  
THR RWY32L 127FT

TWR	119.1
ALTN	118.9
GND	121.9
APP	122.8
RADAR APP	122.3
EMERG	121.5

ALEXANDRIA / BORG EL ARAB  
RNP RWY 32L





<b>Instrument Approach CHART-ICAO</b>	AD ELEV 177FT HEIGHTS RELATED TO THR RWY32L ELEV127FT	TWR 119.1 ALTN 118.9 GND 121.9 APP 122.8 RADAR APP 122.3 EMERG 121.5	<b>ALEXANDRIA/BORG ELARAB RNP RWY 32L</b>
---------------------------------------	---	---	---

**TABULAR DESCRIPTION**

Serial Number	Path Descriptor	Waypoint Identifier	Fly-Over	Course °M(°T)	Magnetic Variation	Distance (NM)	Turn Direction	Altitude(ft)	Speed (Kts)	VPA°/TCH (FT)	Navigation Specification
010	IF	BA722	-	-	-5	-	-	+4000	-200	-	RNP APCH
020	TF	BA720	-	194(198.7)		18.3	R	+2000	-200	-	RNP APCH
030	TF	BA613	-	228(232.9)		4.0	R	@2000	-200	-	RNP APCH
040	TF	BA614	-	318(322.9)		5.0	-	@2000	-	-	RNP APCH
050	TF	RW32L	Y	318(322.9)		5.8	-	-	-	-3.0/50	RNP APCH
060	CA	-	-	008(012.7)		-	R	+2000	-	-	RNP APCH

010	HM	BA722	-	215(220.0)	-5	1 MIN	L	+4000	-200	-	RNP APCH
-----	----	-------	---	------------	----	-------	---	-------	------	---	----------

**WAYPOINT LIST**

Waypoint Identifier	Coordinates
BA722	31° 05' 30.0" N 030° 00' 21.0" E
BA720	30° 48' 05.5" N 029° 53' 31.3" E
BA613	30° 45' 40.6" N 029° 49' 49.1" E
BA614	30° 49' 40.4" N 029° 46' 19.2" E
RW32L	30° 54' 16.79" N 029° 42' 16.74" E



For Simulation Use Only  
Not For Real Life

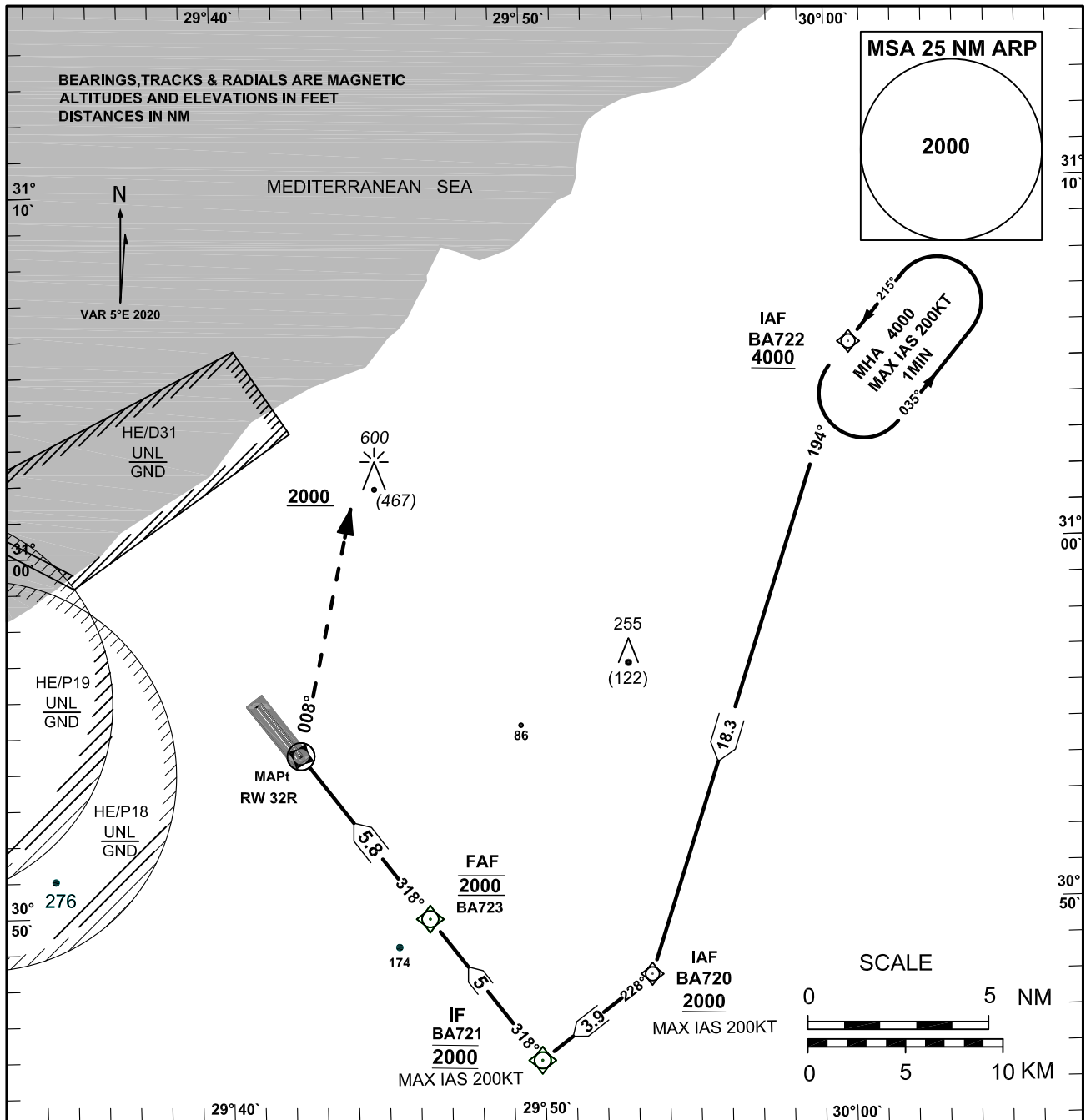
HEBA/HBE

**INSTRUMENT APPROACH  
CHART-ICAO**

AD ELEV 177 FT  
HEIGHTS RELATED TO  
THR RWY32R 133FT

TWR	119.1
ALTN	118.9
GND	121.9
APP	122.8
RADAR APP	122.3
EMERG	121.5

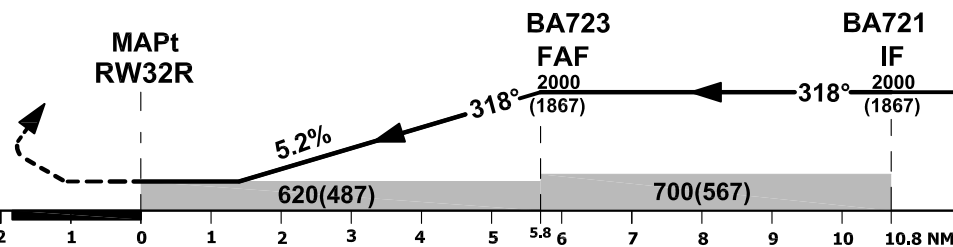
ALEXANDRIA / BORG EL ARAB  
RNP RWY 32R



TRANS LEVEL FL60  
TRANS ALT 4500

**MISSED APCH**  
Turn Right on Track 008°  
to Reach ALT 2000 or above  
then follow ATC instruction.

THR ELEV 133  
RWY 32R



<b>OCA(OCH)</b>	A	B	C	D
<b>LNAV</b>	620(487)			

GND speed - KT	70	90	100	120	140	160
Descent angle(3.00°)	372	478	531	637	743	850



For Simulation Use Only  
Not For Real Life

<b>Instrument Approach CHART-ICAO</b>	AD ELEV 177FT HEIGHTS RELATED TO THR RWY32R ELEV133FT	TWR 119.1 ALTN 118.9 GND 121.9 APP 122.8 RADAR APP 122.3 EMERG 121.5	<b>ALEXANDRIA/BORG EL ARAB RNP RWY 32R</b>
---------------------------------------	---	---	--

**TABULAR DESCRIPTION**

Serial Number	Path Descriptor	Waypoint Identifier	Fly-Over	Course °M(°T)	Magnetic Variation	Distance (NM)	Turn Direction	Altitude(ft)	Speed (Kts)	VPA°/TCH (FT)	Navigation Specification
010	IF	BA722	-	-	-5	-	-	+4000	-200	-	RNP APCH
020	TF	BA720	-	194(198.7)		18.3	R	+2000	-200	-	RNP APCH
030	TF	BA721	-	228(233.2)		3.9	R	@2000	-200	-	RNP APCH
040	TF	BA723	-	318(322.9)		5.0	-	@2000	-	-	RNP APCH
050	TF	RW32R	Y	318(322.9)		5.8	-	-	-	-3.0/50	RNP APCH
060	CA	-	-	008(012.7)		-	R	+2000	-	-	RNP APCH
010	HM	BA722	-	215(220)	-5	1 MIN	L	+4000	-200	-	RNP APCH

**WAYPOINT LIST**

Waypoint Identifier	Coordinates
BA722	31° 05' 30.0" N 030° 00' 21.0" E
BA720	30° 48' 05.5" N 029° 53' 31.3" E
BA721	30° 45' 46.0" N 029° 49' 55.4" E
BA723	30° 49' 45.7" N 029° 46' 25.5" E
RW32R	30° 54' 21.31" N 029° 42' 23.64" E