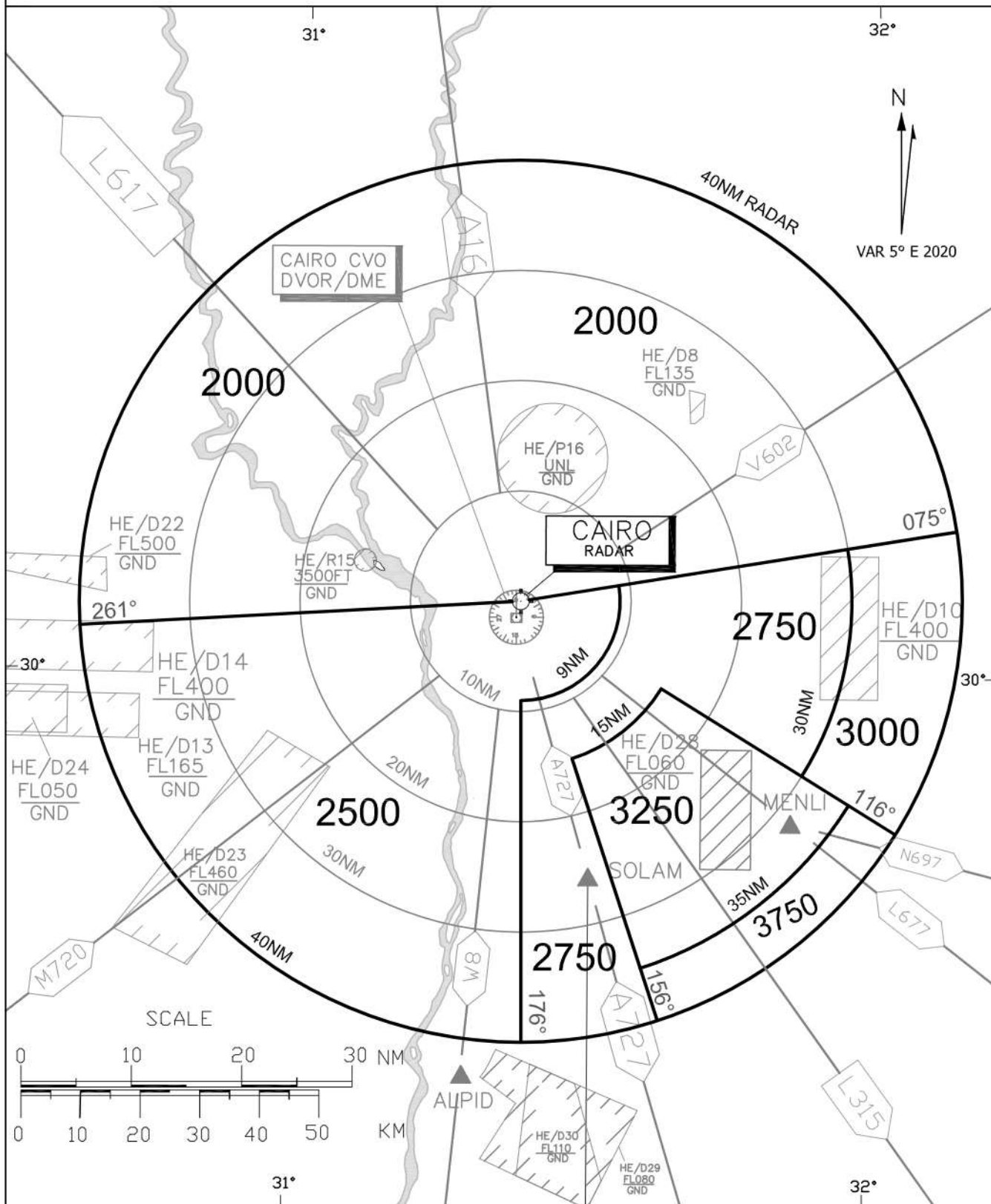




For Simulation Use Only  
Not For Real Life

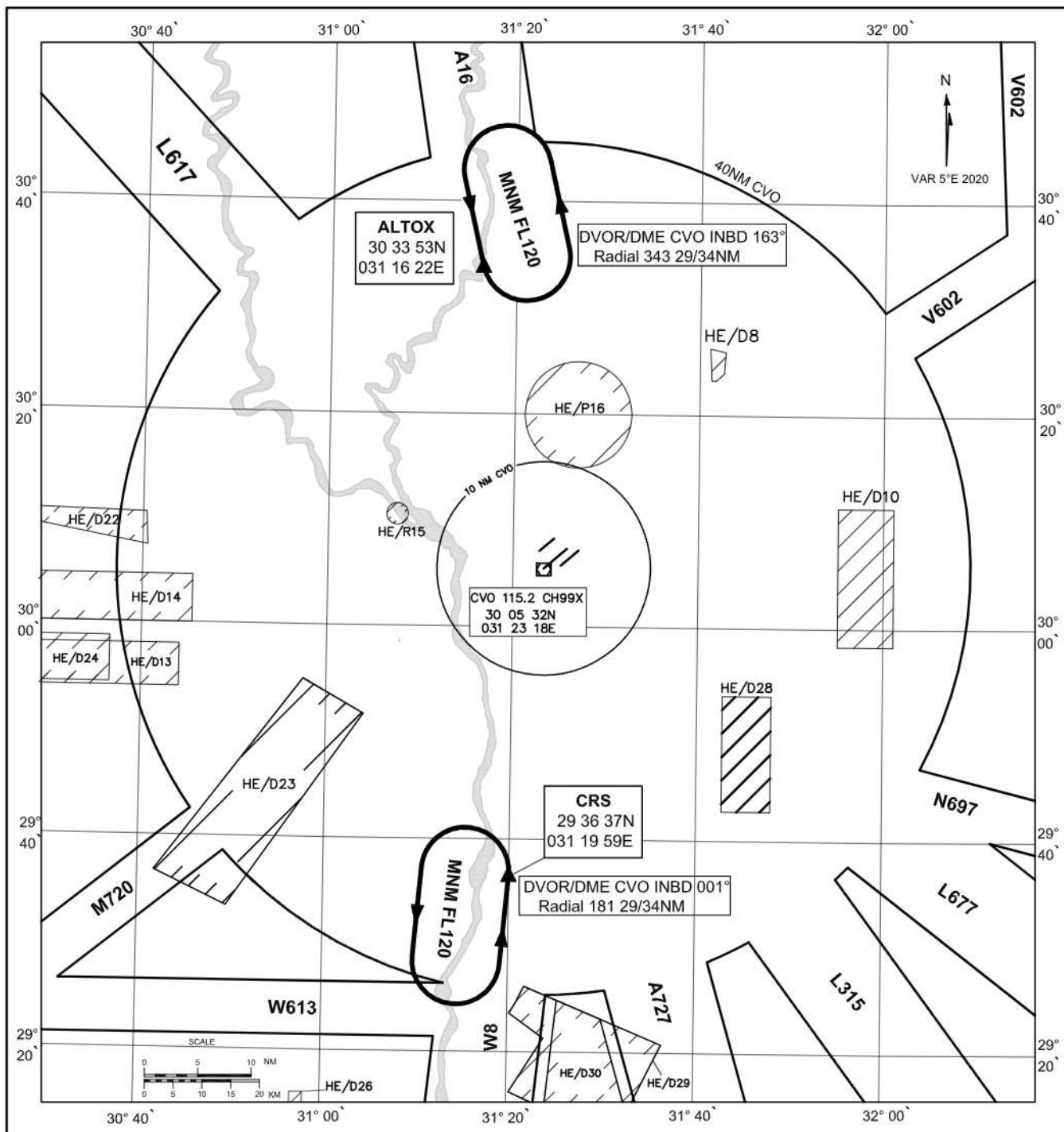
HECA/CAI

# CAIRO MINIMUM RADAR VECTORING ALTITUDE CHART





## CAIRO TMA OUTER FIXES HOLDING PROCEDURES



- Outer Fixes Holding :-

Vectors to these points will be provided by ATC When excessive holdings are expected.

- In case of CVO INOP use ALTOX and CRS as RNAV holdings.



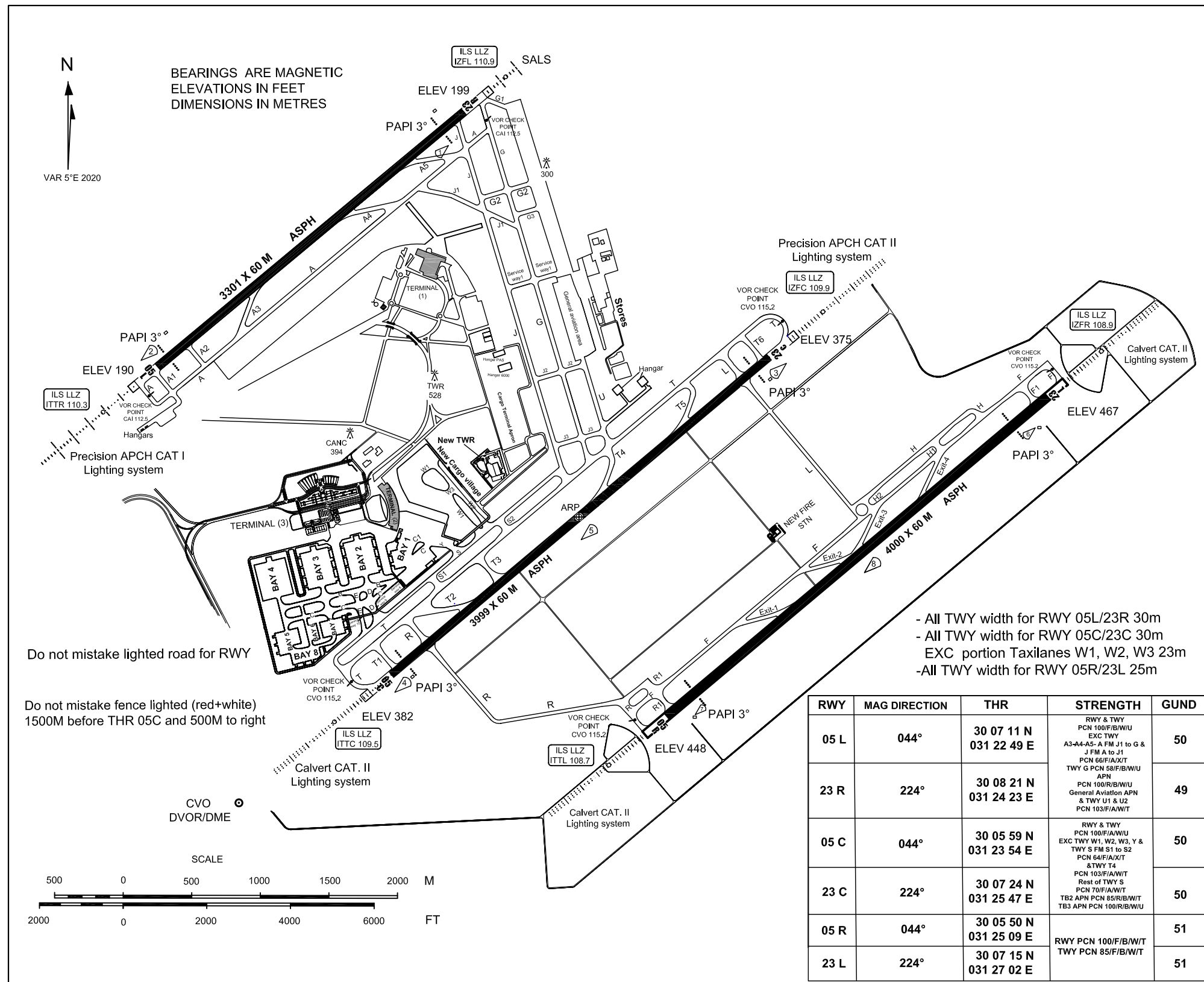
For Simulation Only  
Not For Real Life

HECA/CAI

**AERODROME CHART - ICAO** 30 06 41N  
031 24 50 E ELEV 467FT

TWR	118.1	125.875
PRE-FLIGHT	120.1	127.6
D-ATIS	122.6	
GND	120.4	121.9 126.375
EMERG	121.5	

**CAIRO/CAIRO**





For Simulation Only  
Not For Real Life

HECA/CAI

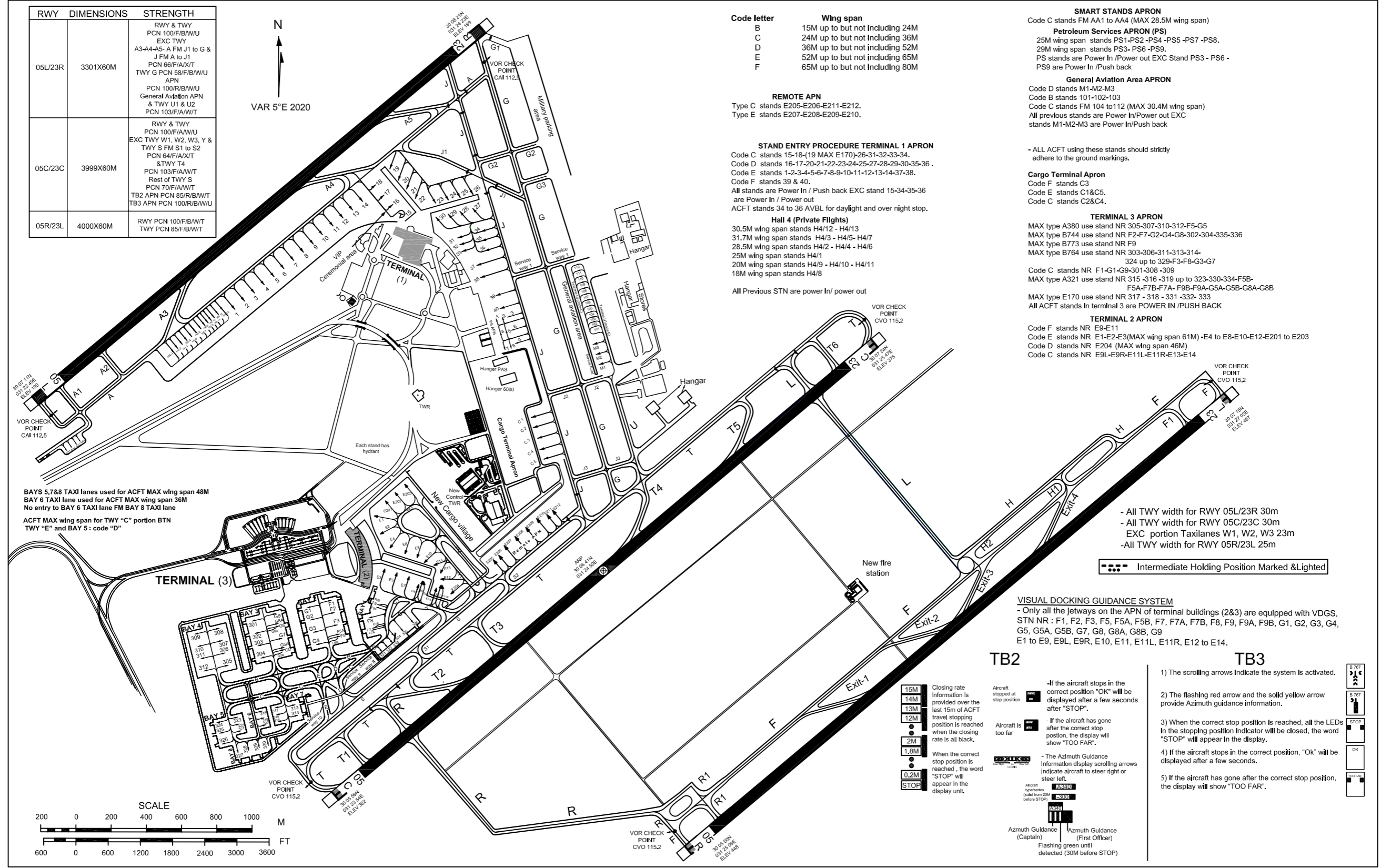
# AIRCRAFT PARKING / DOCKING CHART - ICAO

APN ELEV 387FT

TWR	118.1	125.875
PRE-FLIGHT	120.1	127.6
D-ATIS	122.6	
GND	120.4	121.9 126.375
EMRG	121.5	

# CAIRO/CAIRO

RWY	DIMENSIONS	STRENGTH
05L/23R	3301X60M	RWY & TWY PCN 100/F/B/W/U EXC TWY A3-A4-A5- A FM J1 to G & J FM A to J1 PCN 66/F/A/X/T TWY G PCN 58/F/B/W/U APN PCN 100/F/B/W/U General Aviation APN & TWY U1 & U2 PCN 103/F/A/W/T
05C/23C	3999X60M	RWY & TWY PCN 100/F/A/W/U EXC TWY W1, W2, W3, Y & TWY S FM S1 to S2 PCN 64/F/A/X/T & TWY T4 PCN 103/F/A/W/T Rest of TWY S PCN 70/F/A/W/T TB2 APN PCN 85/R/B/W/U TB3 APN PCN 100/R/B/W/U
05R/23L	4000X60M	RWY PCN 100/F/B/W/T TWY PCN 85/F/B/W/T



Code letter	Wing span
B	15M up to but not including 24M
C	24M up to but not including 36M
D	36M up to but not including 52M
E	52M up to but not including 65M
F	65M up to but not including 80M

**REMOTE APN**  
 Type C stands E205-E206-E211-E212.  
 Type E stands E207-E208-E209-E210.

**STAND ENTRY PROCEDURE TERMINAL 1 APRON**  
 Code C stands 15-18-(19 MAX E170)-26-31-32-33-34.  
 Code D stands 16-17-20-21-22-23-24-25-27-28-29-30-35-36.  
 Code E stands 1-2-3-4-5-6-7-8-9-10-11-12-13-14-37-38.  
 Code F stands 39 & 40.  
 All stands are Power In / Push back EXC stand 15-34-35-36 are Power In / Power out  
 ACFT stands 34 to 36 AVBL for daylight and over night stop.

**Hall 4 (Private Flights)**  
 30.5M wing span stands H4/12 - H4/13  
 31.7M wing span stands H4/3 - H4/5- H4/7  
 28.5M wing span stands H4/2 - H4/4 - H4/6  
 25M wing span stands H4/1  
 20M wing span stands H4/9 - H4/10 - H4/11  
 18M wing span stands H4/8

All Previous STN are power In/ power out

**SMART STANDS APRON**  
 Code C stands FM AA1 to AA4 (MAX 28.5M wing span)  
**Petroleum Services APRON (PS)**  
 25M wing span stands PS1-PS2-PS4-PS5-PS7-PS8.  
 29M wing span stands PS3- PS6-PS9.  
 PS stands are Power In /Power out EXC Stand PS3 - PS6 - PS9 are Power In /Push back

**General Aviation Area APRON**  
 Code D stands M1-M2-M3  
 Code B stands 101-102-103  
 Code C stands FM 104 to112 (MAX 30.4M wing span)  
 All previous stands are Power In/Power out EXC stands M1-M2-M3 are Power In/Power out

- ALL ACFT using these stands should strictly adhere to the ground markings.

**Cargo Terminal Apron**  
 Code F stands C3  
 Code E stands C1&C5.  
 Code C stands C2&C4.

**TERMINAL 3 APRON**  
 MAX type A380 use stand NR 305-307-310-312-F5-G5  
 MAX type B744 use stand NR F2-F7-G2-G4-G8-302-304-335-336  
 MAX type B773 use stand NR F9  
 MAX type B764 use stand NR 303-306-311-313-314-324 up to 329-F3-F8-G3-G7  
 Code C stands NR F1-G1-G9-301-308 -309  
 MAX type A321 use stand NR 315 -316 -319 up to 323-330-334-F5B-F5A-F7B-F7A- F9B-F9A-G5A-G5B-G8A-G8B  
 MAX type E170 use stand NR 317 - 318 - 331 -332- 333  
 All ACFT stands In terminal 3 are POWER IN /PUSH BACK

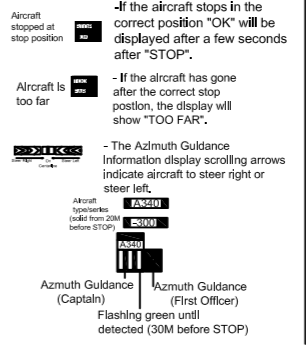
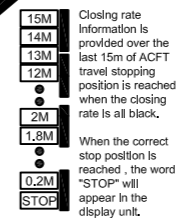
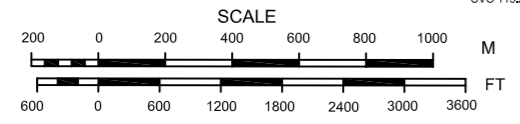
**TERMINAL 2 APRON**  
 Code F stands NR E9-E11  
 Code E stands NR E1-E2-E3(MAX wing span 61M)-E4 to E8-E10-E12-E201 to E203  
 Code D stands NR E204 (MAX wing span 46M)  
 Code C stands NR E9L-E9R-E11L-E11R-E13-E14

- All TWY width for RWY 05L/23R 30m
- All TWY width for RWY 05C/23C 30m
- EXC portion Taxiways W1, W2, W3 23m
- All TWY width for RWY 05R/23L 25m

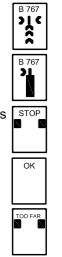
Intermediate Holding Position Marked & Lighted

**VISUAL DOCKING GUIDANCE SYSTEM**  
 - Only all the jetways on the APN of terminal buildings (2&3) are equipped with VDGS.  
 STN NR : F1, F2, F3, F5, F5A, F5B, F7, F7A, F7B, F8, F9, F9A, F9B, G1, G2, G3, G4, G5, G5A, G5B, G7, G8, G8A, G8B, G9  
 E1 to E9, E9L, E9R, E10, E11, E11L, E11R, E12 to E14.

BAYS 5,7&8 TAXI lanes used for ACFT MAX wing span 48M  
 BAY 6 TAXI lane used for ACFT MAX wing span 36M  
 No entry to BAY 6 TAXI lane FM BAY 8 TAXI lane  
 ACFT MAX wing span for TWY "C" portion BTN TWY "E" and BAY 5 : code "D"



- 1) The scrolling arrows indicate the system is activated.
- 2) The flashing red arrow and the solid yellow arrow provide Azimuth guidance information.
- 3) When the correct stop position is reached, all the LEDs in the stopping position indicator will be closed, the word "STOP" will appear in the display.
- 4) If the aircraft stops in the correct position, "Ok" will be displayed after a few seconds.
- 5) If the aircraft has gone after the correct stop position, the display will show "TOO FAR".





INS COORDINATES

STAND NR	COORDINATES	ELEV (FT)	STAND NR	COORDINATES	ELEV (FT)	STAND NR	COORDINATES	ELEV (FT)
1	300728.4N0312330.9E	208.1	316	300613.8N0312340.8E	381.6	F5A	300629.1N0312355.1E	377.3
2	300729.9N0312333.0E	208.3	317	300615.1N0312340.5E	380.9	F7A	300629.1N0312400.9E	378.6
3	300731.4N0312335.0E	208.0	318	300615.1N0312339.2E	379.2	F9A	300634.3N0312401.6E	380.6
4	300733.0N0312337.1E	207.3	319	300613.5N0312339.6E	380.0	F5B	300628.6N0312356.3E	377.0
5	300734.5N0312339.1E	206.4	320	300612.2N0312340.0E	380.7	F7B	300629.7N0312359.7E	377.7
6	300736.0N0312341.2E	205.4	321	300611.1N0312334.8E	377.8	F9B	300635.4N0312401.0E	380.2
7	300737.6N0312343.3E	204.6	322	300612.3N0312334.5E	377.0	G1	300633.5N0312346.4E	375.4
8	300739.1N0312345.3E	204.9	323	300613.6N0312334.1E	376.2	G2	300631.2N0312346.9E	376.1
9	300740.6N0312347.4E	205.7	324	300612.0N0312327.8E	375.1	G3	300629.0N0312347.8E	376.3
10	300742.4N0312349.3E	210.7	325	300610.1N0312328.4E	376.2	G4	300626.7N0312348.3E	377.1
11	300744.0N0312351.5E	210.0	326	300608.1N0312329.0E	377.6	G5	300625.9N0312344.5E	376.2
12	300745.5N0312353.6E	210.5	327	300605.6N0312333.9E	380.3	G7	300628.4N0312343.5E	376.4
13	300747.0N0312355.6E	211.5	328	300606.1N0312336.1E	381.5	G8	300630.7N0312343.0E	376.2
14	300748.6N0312357.7E	212.4	329	300606.6N0312338.4E	382.6	G9	300632.9N0312342.2E	375.2
15	300746.4N0312405.9E	223.9	330	300607.4N0312403.6E	383.3	G5A	300626.4N0312343.4E	377.0
16	300748.1N0312404.1E	220.3	331	300625.0N0312403.6E	383.8	G8A	300631.1N0312342.2E	376.7
17	300749.8N0312402.2E	216.8	332	300625.8N0312404.8E	382.9	G5B	300625.9N0312344.6E	376.1
18	300751.7N0312400.4E	213.1	333	300626.7N0312405.9E	383.2	G8B	300630.4N0312343.4E	375.8
19	300754.7N0312403.4E	214.5	334	300627.8N0312407.3E	384.3	H4-1	300720.3N0312318.1E	202.0
20	300752.6N0312405.2E	218.3	335	300629.1N0312408.7E	385.5	H4-2	300721.1N0312318.8E	203.0
21	300751.0N0312407.0E	221.8	336	300630.7N0312410.8E	387.2	H4-3	300721.8N0312319.8E	203.0
22	300749.3N0312408.9E	225.4	AA1	300701.9N0312255.7E	209.0	H4-4	300722.6N0312320.8E	204.0
23	300748.5N0312413.2E	230.5	AA2	300702.5N0312256.7E	211.0	H4-5	300723.0N0312321.8E	204.0
24	300749.1N0312415.9E	233.6	AA3	300703.1N0312257.7E	210.0	H4-6	300724.0N0312322.8E	205.0
25	300749.6N0312418.4E	236.2	AA4	300703.6N0312258.7E	210.0	H4-7	300724.8N0312323.7E	205.0
26	300750.2N0312421.1E	238.5	C1	300709.2N0312434.2E	318.7	H4-8	300725.4N0312324.6E	206.0
27	300747.6N0312421.1E	243.9	C2	300707.3N0312434.6E	320.4	H4-9	300725.9N0312325.2E	206.0
28	300747.0N0312418.4E	241.5	C3	300705.4N0312435.6E	321.9	H4-10	300726.3N0312325.9E	207.0
29	300746.5N0312415.9E	238.9	C4	300703.3N0312436.1E	323.5	H4-11	300726.8N0312326.5E	207.0
30	300745.9N0312413.3E	235.9	C5	300701.5N0312436.9E	324.7	H4-12	300727.5N0312327.4E	206.6
31	300742.1N0312418.0E	244.4	E1	300650.6N0312401.2E	330.4	H4-13	300728.2N0312328.4E	206.6
32	300740.9N0312418.5E	246.6	E2	300647.3N0312402.5E	331.0	M1	300719.1N0312448.3E	308.4
33	300739.6N0312418.9E	248.6	E3	300640.8N0312403.5E	334.3	M2	300721.0N0312447.7E	305.4
34	300743.3N0312422.9E	248.7	E4	300644.8N0312404.6E	334.1	M3	300722.8N0312447.0E	302.5
35	300741.6N0312423.1E	251.0	E5	300640.2N0312406.1E	336.7	PS1	300727.3N0312426.4E	275.2
36	300739.8N0312423.8E	253.2	E6	300643.7N0312407.7E	336.6	PS2	300727.6N0312427.7E	276.4
37	300737.1N0312422.1E	255.4	E7	300639.5N0312408.7E	339.2	PS3	300727.6N0312428.8E	276.0
38	300734.9N0312423.0E	259.1	E8	300643.1N0312410.3E	339.1	PS4	300724.8N0312427.3E	277.7
39	300731.6N0312426.3E	267.3	E9	300638.7N0312411.6E	341.8	PS5	300725.2N0312428.5E	278.9
40	300729.2N0312427.2E	271.7	E10	300642.2N0312411.9E	340.2	PS6	300725.2N0312429.7E	281.0
101	300726.1N0312447.1E	298.9	E11	300638.0N0312415.5E	345.1	PS7	300721.6N0312428.4E	282.8
102	300726.9N0312446.8E	297.5	E12	300639.1N0312415.4E	344.3	PS8	300721.9N0312429.7E	283.9
103	300727.8N0312446.5E	296.2	E13	300640.3N0312415.4E	344.4	PS9	300722.8N0312430.5E	286.0
104	300728.8N0312446.2E	294.7	E14	300641.7N0312413.9E	341.3	VIP	300745.7N0312358.2E	212.0
105	300729.8N0312445.8E	293.0	E201	300653.4N0312403.4E	329.9			
106	300730.9N0312445.4E	291.3	E202	300655.0N0312405.5E	329.4			
107	300732.0N0312445.0E	289.6	E203	300656.5N0312407.5E	329.0			
108	300733.1N0312444.6E	287.9	E204	300636.4N0312417.6E	347.4			
109	300734.2N0312444.2E	286.1	E205	300642.8N0312426.5E	363.7			
110	300735.2N0312443.9E	284.4	E206	300643.7N0312427.7E	364.1			
111	300736.3N0312443.5E	282.7	E207	300645.5N0312428.8E	364.2			
112	300737.4N0312443.1E	281.0	E208	300647.2N0312431.0E	362.0			
301	300630.8N0312334.6E	375.2	E209	300648.9N0312433.3E	358.2			
302	300628.6N0312335.2E	376.1	E210	300650.6N0312435.6E	354.9			
303	300626.3N0312336.0E	376.2	E211	300651.3N0312437.8E	352.3			
304	300624.0N0312336.6E	376.2	E212	300652.1N0312438.9E	350.4			
305	300623.0N0312332.6E	375.5	E11L	300637.4N0312414.5E	345.1			
306	300625.4N0312331.7E	376.2	E11R	300637.9N0312415.8E	345.3			
307	300627.8N0312331.1E	376.0	E9L	300638.0N0312410.7E	341.3			
308	300630.2N0312330.3E	375.0	E9R	300638.6N0312411.8E	342.0			
309	300628.3N0312322.0E	370.4	F1	300635.6N0312353.9E	375.2			
310	300625.9N0312322.6E	371.5	F2	300633.3N0312354.8E	376.1			
311	300621.1N0312323.5E	371.6	F3	300631.0N0312355.2E	376.4			
312	300621.1N0312324.1E	370.6	F5	300628.6N0312356.2E	377.2			
313	300616.2N0312346.8E	385.0	F7	300629.5N0312400.0E	377.9			
314	300614.2N0312347.4E	386.3	F8	300631.8N0312359.4E	378.0			
315	300612.5N0312341.3E	382.5	F9	300635.0N0312401.2E	380.4			



For Simulation Use Only  
Not For Real Life

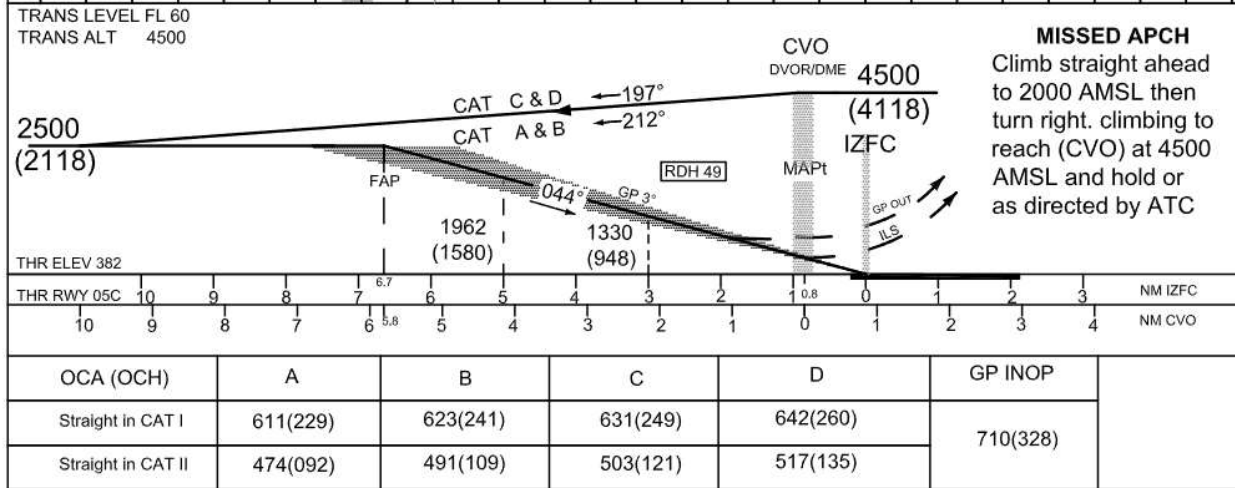
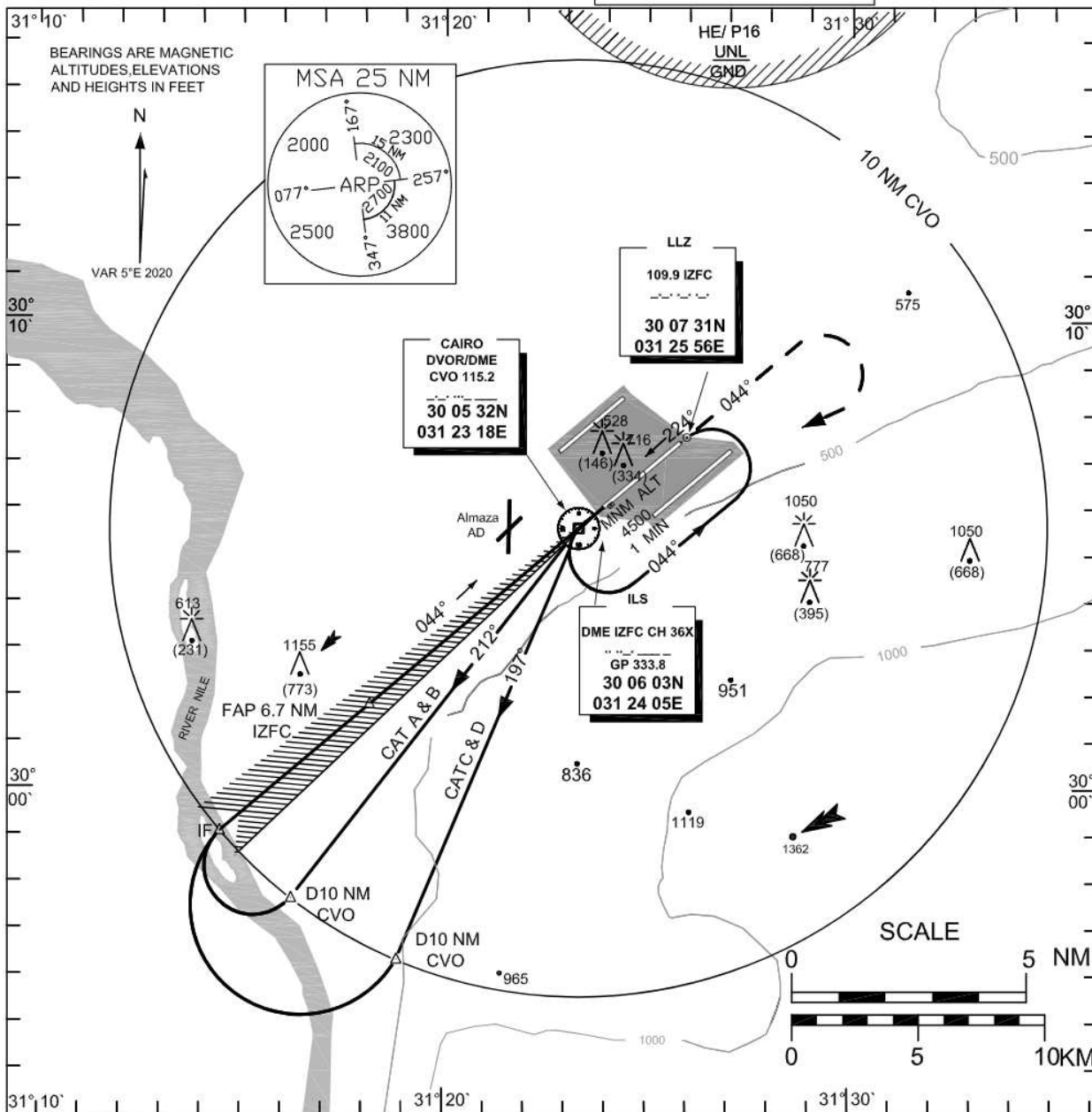
HECA/CAI

INSTRUMENT  
APPROACH  
CHART-ICAO

AERODROME ELEV 467 FT  
HEIGHTS RELATED TO  
THR RWY 05C ELEV 382FT

APP	119.05	119.975	120.7	124.375	119.55
TWR	118.1	125.875			
PRE-FLIGHT	120.1	127.6			
D-ATIS	122.6				
GND	120.4	121.9	126.375		
EMERG	121.5				

CAIRO /CAIRO  
ILS or LOC  
RWY05C





CAIRO (HECA)

ILS or LOC RWY 05C

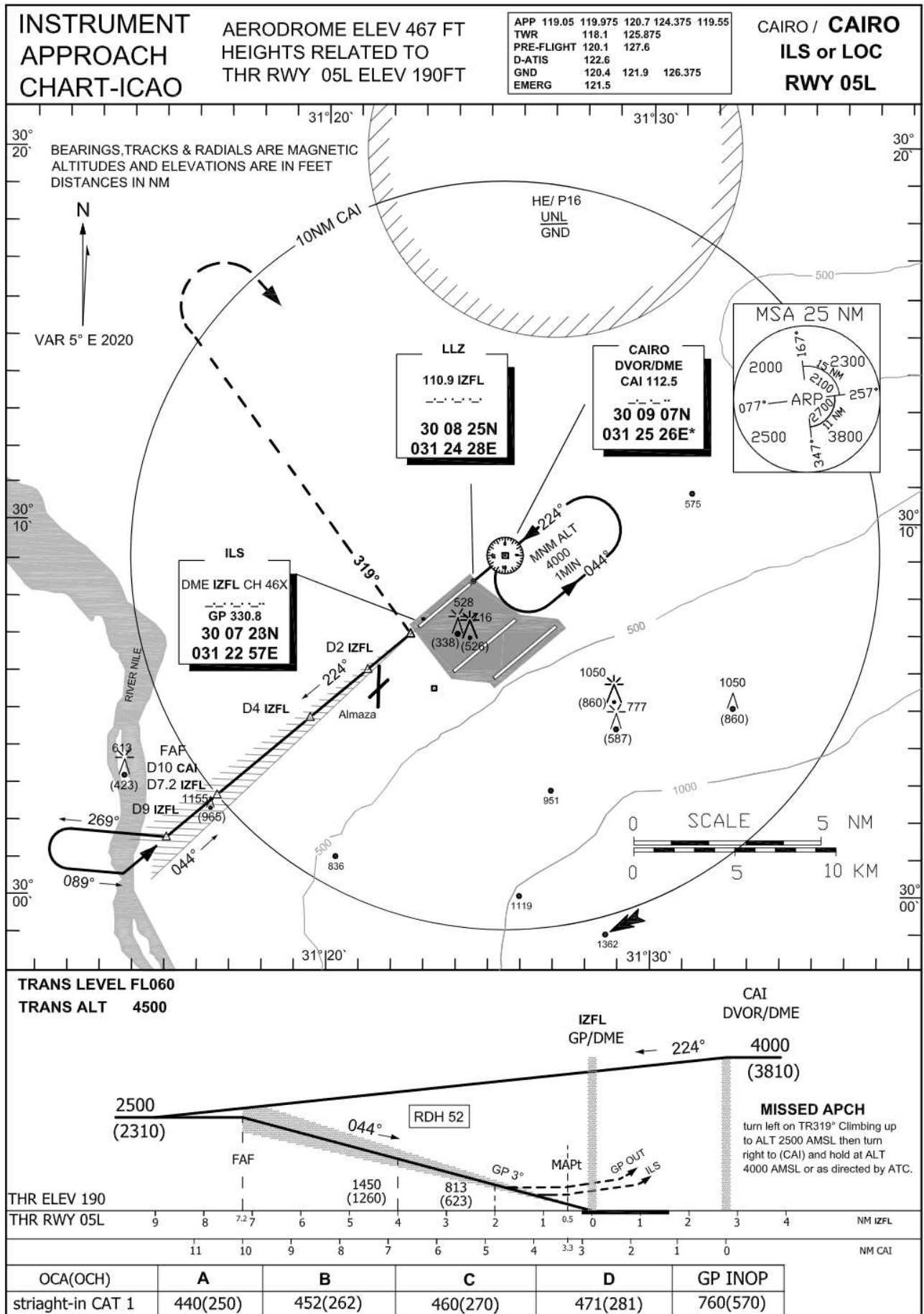
AERONAUTICAL DATA TABULATION

ILS APCH to RWY 05C from CVO DVOR/DME	
Fix/point	Coordinates
CVO DVOR/DME (IAF)	30° 05' 32.3"N 031° 23' 18.3"E
D 10NM CVO - TR197° CAT C&D	29° 56' 16.3"N 031° 18' 57.9"E
D 10NM CVO - TR212° CAT A&B	29° 57' 33.3"N 031° 16' 21.3"E
D 10NM CVO - TR 044° (IF)	29° 58' 58.9"N 031° 14' 35.0"E
D 5.8NM CVO - TR 044° (FAP)	30° 01' 43.4"N 031° 18' 13.4"E
(MAPt) CVO TR 044°/ 0.8NM IZFC(DME)	30° 05' 32.3"N 031° 23' 18.3"E
THR RWY 05C	30° 05' 58.88"N 031° 23' 53.64"E
IZFC (GP/DME)	30° 06' 02.7"N 031° 24' 05.1"E
IZFC (LLZ)	30° 07' 30.5"N 031° 25' 55.6"E



For Simulation Use Only  
Not For Real Life

HECA/CAI







---

CAIRO (HECA)

ILS or LOC RWY 05L

### AERONAUTICAL DATA TABULATION

ILS APCH to RWY 05L from CAI DVOR/DME	
Fix/point	Coordinates
CAI DVOR/DME (IAF)	30° 09' 07.2"N 031° 25' 26.0"E
D9 IZFL –TR224°/9NM IZFL	30° 01' 27.3"N 031° 15' 07.7"E
D7.2 IZFL –TR 044°/7.2NM IZFL (FAF)	30° 02' 36.1"N 031° 16' 40.3"E
(MAPt) BRG 224.49°/ 3.3NM CAI, 0.5NM IZFL(DME)	30° 06' 59.47"N 031° 22' 33.4"E
THR RWY 05L	30° 07' 11.03"N 031° 22' 48.88"E
IZFL (GP/DME)	30° 07' 23.3"N 031° 22' 56.6"E
IZFL (LLZ)	30° 08' 25.0"N 031° 24' 28.2"E

---



For Simulation Use Only  
Not For Real Life

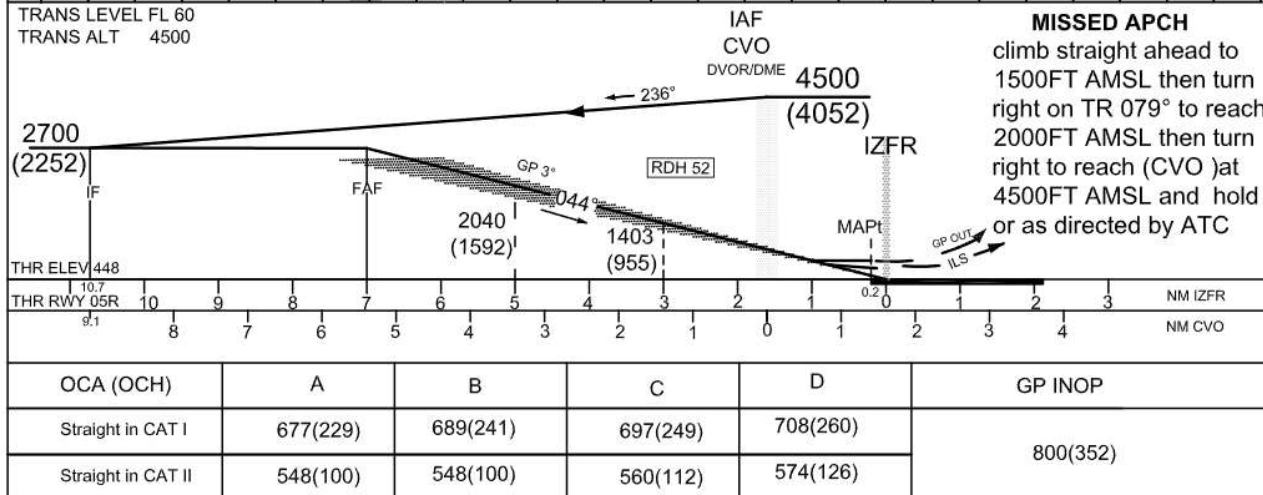
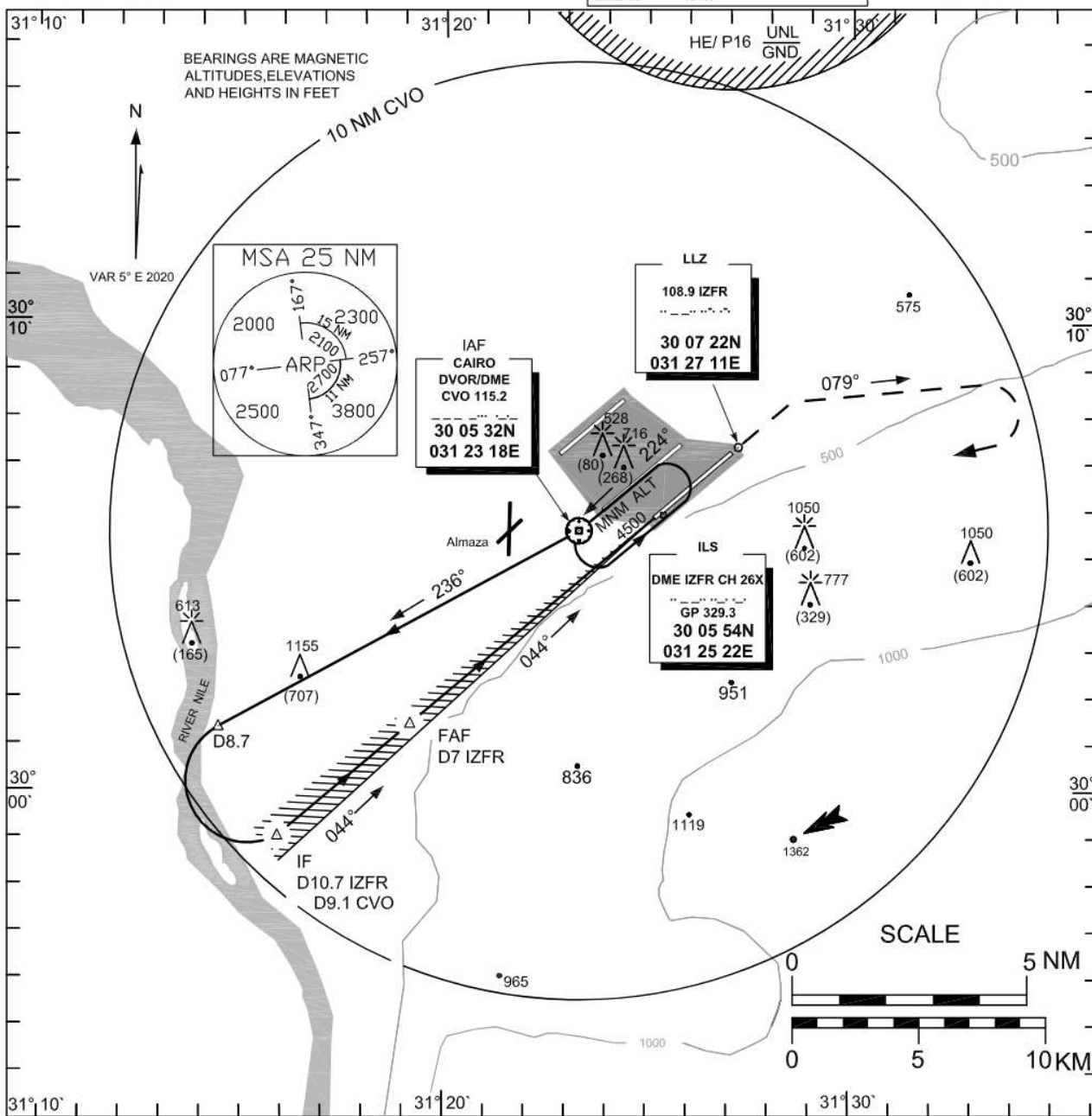
HECA/CAI

INSTRUMENT  
APPROACH  
CHART-ICAO

AERODROME ELEV 467FT  
HEIGHTS RELATED TO  
THR RWY 05R ELEV448FT

APP	119.05	119.975	120.7	124.375	119.55
TWR	118.1	125.875			
PRE-FLIGHT	120.1	127.6			
D-ATIS	122.6				
GND	120.4	121.9	126.375		
EMERG	121.5				

CAIRO /CAIRO  
ILS or LOC  
RWY05R





CAIRO (HECA)

ILS or LOC RWY 05R

AERONAUTICAL DATA TABULATION

ILS APCH to RWY 05R from CVO DVOR/DME	
Fix/point	Coordinates
CVO DVOR/DME (IAF)	30° 05' 32.3"N 031° 23' 18.3"E
D8.7 CVO -TR236°/8.7NM CVO	30° 01' 15.6"N 031° 14' 30.6"E
D 10.7 IZFR TR 044° - (IF)	29° 58' 56.7"N 031° 15' 59.6"E
D 7 IZFR TR 044° - (FAF)	30° 01' 22.3"N 031° 19' 12.9"E
(MAPt) THR RWY 05R TR 044° /0.2 NM IZFR(DME)	30° 05' 49.78"N 031° 25' 08.65"E
THR RWY 05R	30° 05' 49.78"N 031° 25' 08.65"E
IZFR (GP/DME)	30° 05' 54.1"N 031° 25' 22.1"E
IZFR (LLZ)	30° 07' 22.0"N 031° 27' 11.5"E



For Simulation Use Only  
Not For Real Life

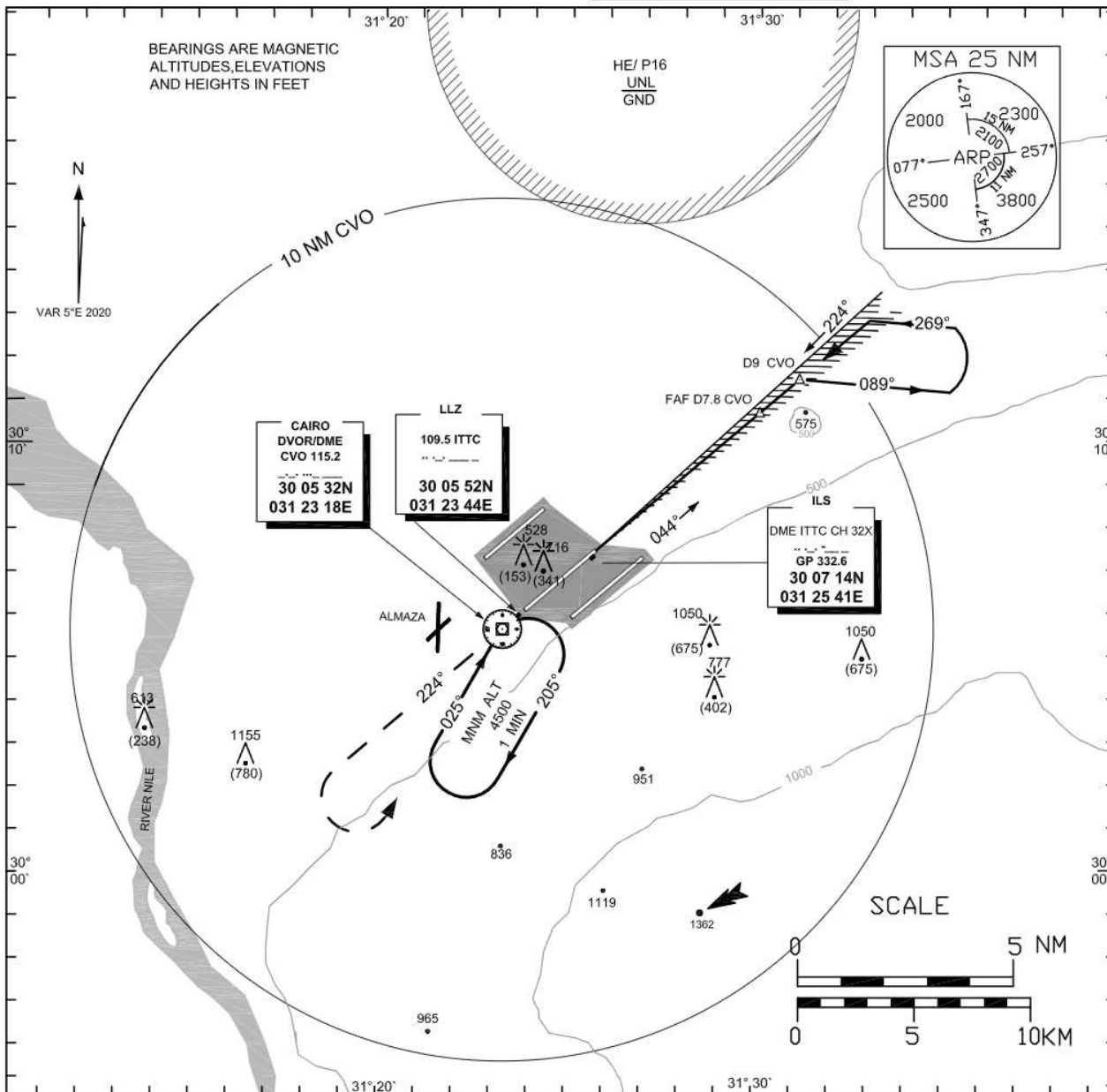
HECA/CAI

INSTRUMENT  
APPROACH  
CHART-ICAO

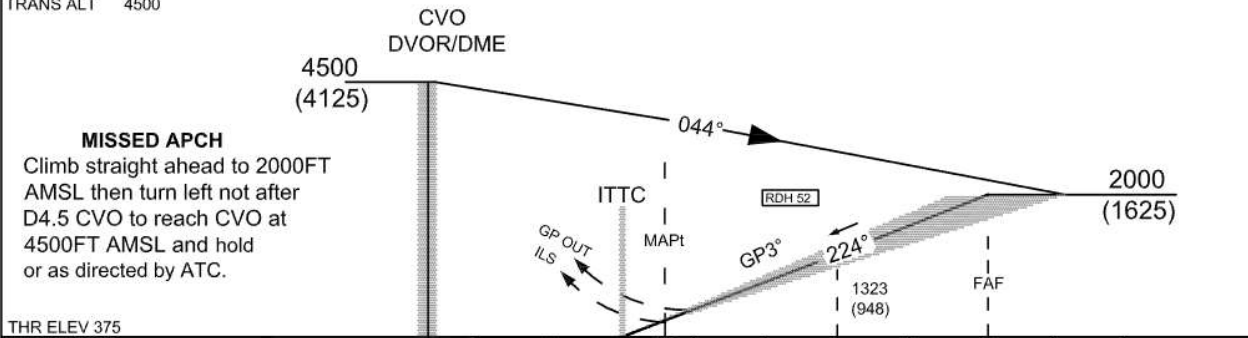
AERODROME ELEV 467FT  
HEIGHTS RELATED TO  
THR RWY 23C ELEV 375FT

APP	119.05	119.975	120.7	124.375	119.55
TWR	118.1	125.875			
PRE-FLIGHT	120.1	127.6			
D-ATIS	122.6				
GND	120.4	121.9	126.375		
EMERG	121.5				

CAIRO /CAIRO  
ILS or LOC  
RWY 23C



TRANS LEVEL FL 60  
TRANS ALT 4500



THR ELEV 375  
THR RWY 23C

OCA (OCH)	A	B	C	D	GP INOP
Straight in cat I	605 (230)	617 (242)	625 (250)	636 (261)	760 (385)
Straight in cat II	467 (092)	484 (109)	496 (121)	510 (135)	



---

**CAIRO (HECA)**

**ILS or LOC RWY 23C**

**AERONAUTICAL DATA TABULATION**

<b>ILS APCH to RWY 23C from CVO DVOR/DME</b>	
<b>Fix/point</b>	<b>Coordinates</b>
CVO DVOR/DME (IAF)	30° 05' 32.3"N 031° 23' 18.3"E
D9 CVO –TR044°/9NM CVO	30° 11' 25.6"N 031° 31' 09.7"E
D7.8 CVO –TR 224°/7.8NM CVO (FAF)	30° 10' 38.4"N 031° 30' 06.6"E
(MAPt) BRG 044.0°/ D 3.3 CVO - 0.6 ITTC(DME)	30° 07' 40.6"N 031° 26' 09.1"E
THR RWY 23C	30° 07' 23.77"N 031° 25' 46.69"E
ITTC (GP/DME)	30° 07' 14.3"N 031° 25' 41.4"E
ITTC (LLZ)	30° 05' 51.8"N 031° 23' 44.0"E

---



For Simulation Use Only  
Not For Real Life

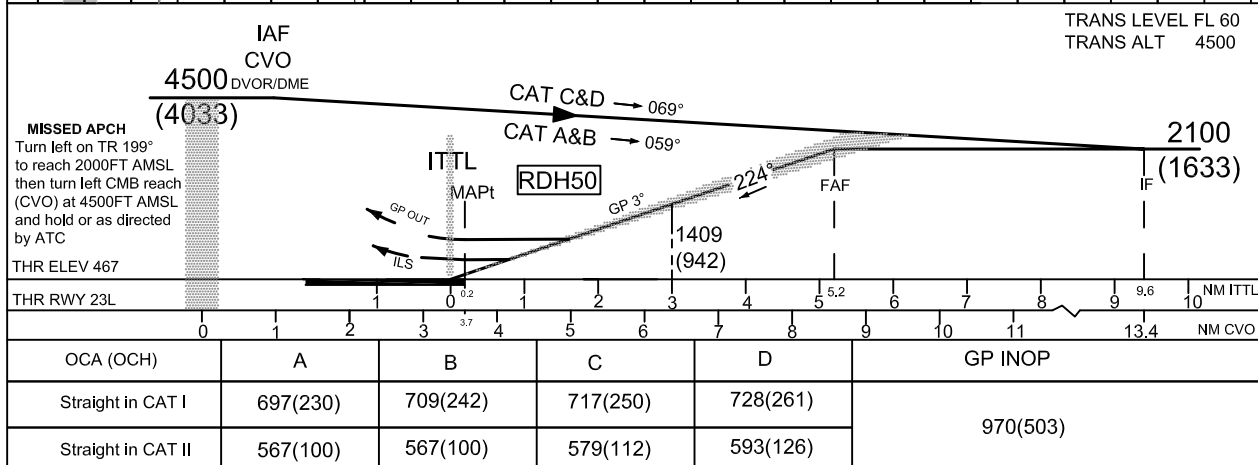
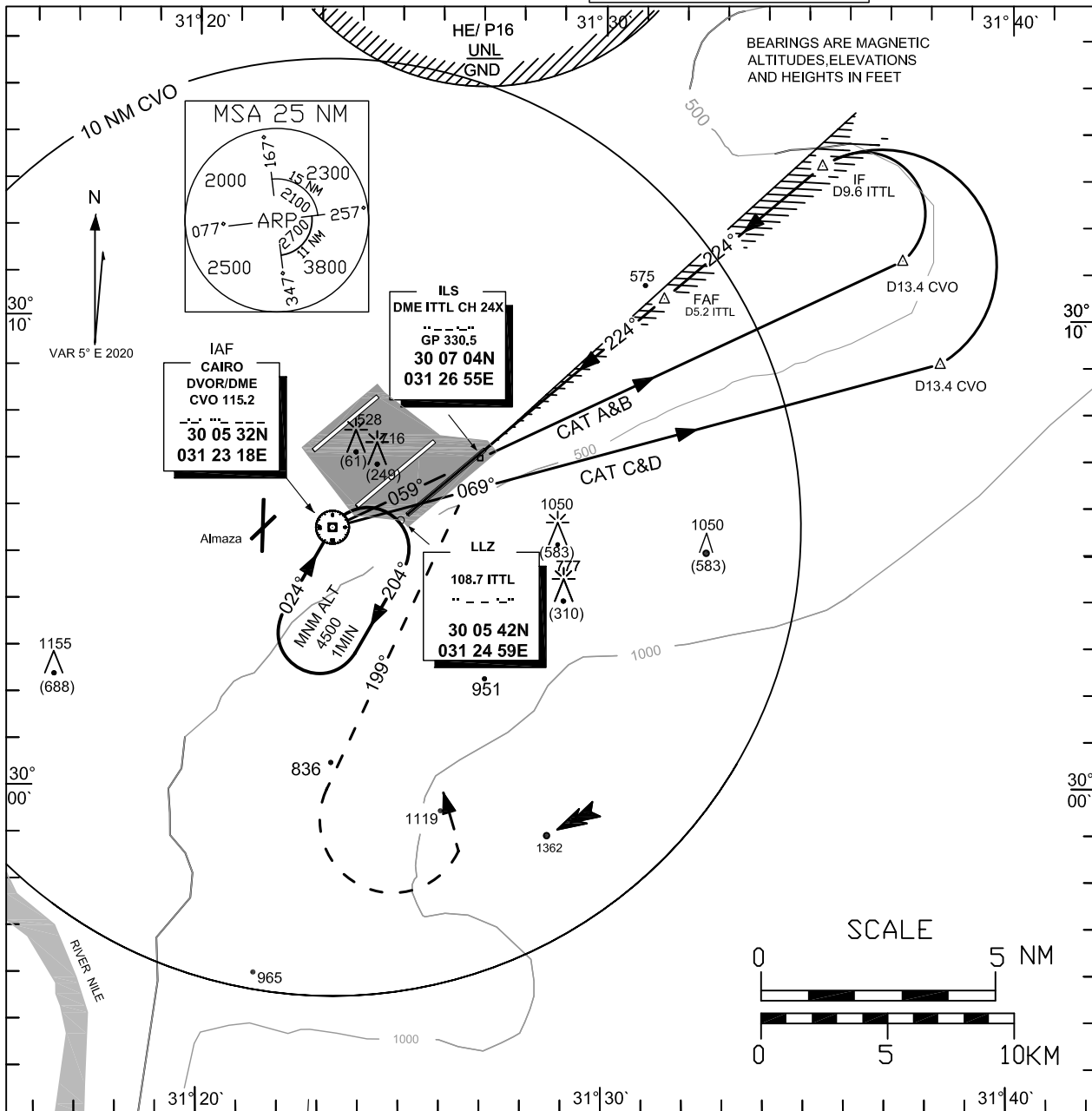
HECA/CAI

**INSTRUMENT  
APPROACH  
CHART-ICAO**

**AERODROME ELEV 467FT**  
HEIGHTS RELATED TO  
THR RWY 23L 467FT

APP	119,05	119,975	120,7	124,375	119,55
TWR	118,1	125,875			
PRE-FLIGHT	120,1	127,6			
D-ATIS	122,6				
GND	120,4	121,9	126,375		
EMERG	121,5				

**CAIRO /CAIRO  
ILS or LOC  
RWY23L**





CAIRO (HECA)

ILS or LOC RWY 23L

AERONAUTICAL DATA TABULATION

ILS APCH to RWY 23L from CVO DVOR/DME	
Fix/point	Coordinates
CVO DVOR/DME (IAF)	30° 05' 32.3" N 031° 23' 18.3"E
D13.4 CVO –TR 059°/CAT A&B	30° 11' 23.2" N 031° 37' 15.2" E
D13.4 CVO –TR 069°/CAT C&D	30° 09' 11.5" N 031° 38' 12.4"E
D9.6 ITTL –TR 224° (IF)	30° 13' 24.3" N 031° 35' 15.2"E
D5.2 ITTL –TR 224° (FAF)	30° 10' 31.1"N 031° 31' 23.8"E
(MAPt) THR RWY 23L TR 224° /0.2NM ITTL(DME)	30° 07' 14.66"N 031° 27' 01.74"E
THR RWY 23L	30° 07' 14.66"N 031° 27' 01.74"E
ITTL(GP/DME)	30° 07' 03.7"N 031° 26' 54.9"E
ITTL (LLZ)	30° 05' 42.5"N 031° 24' 58.9"E



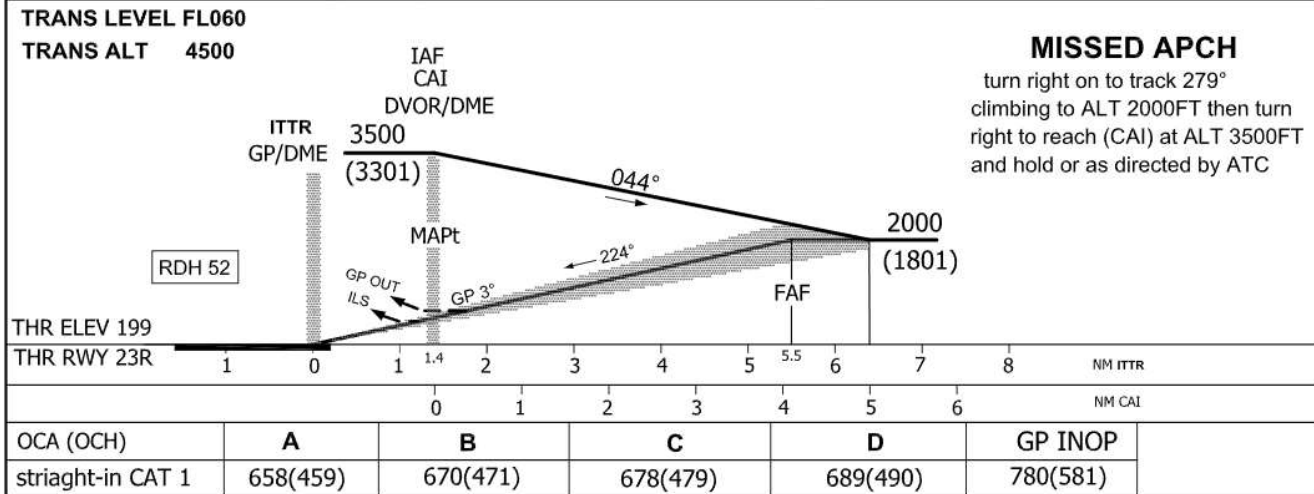
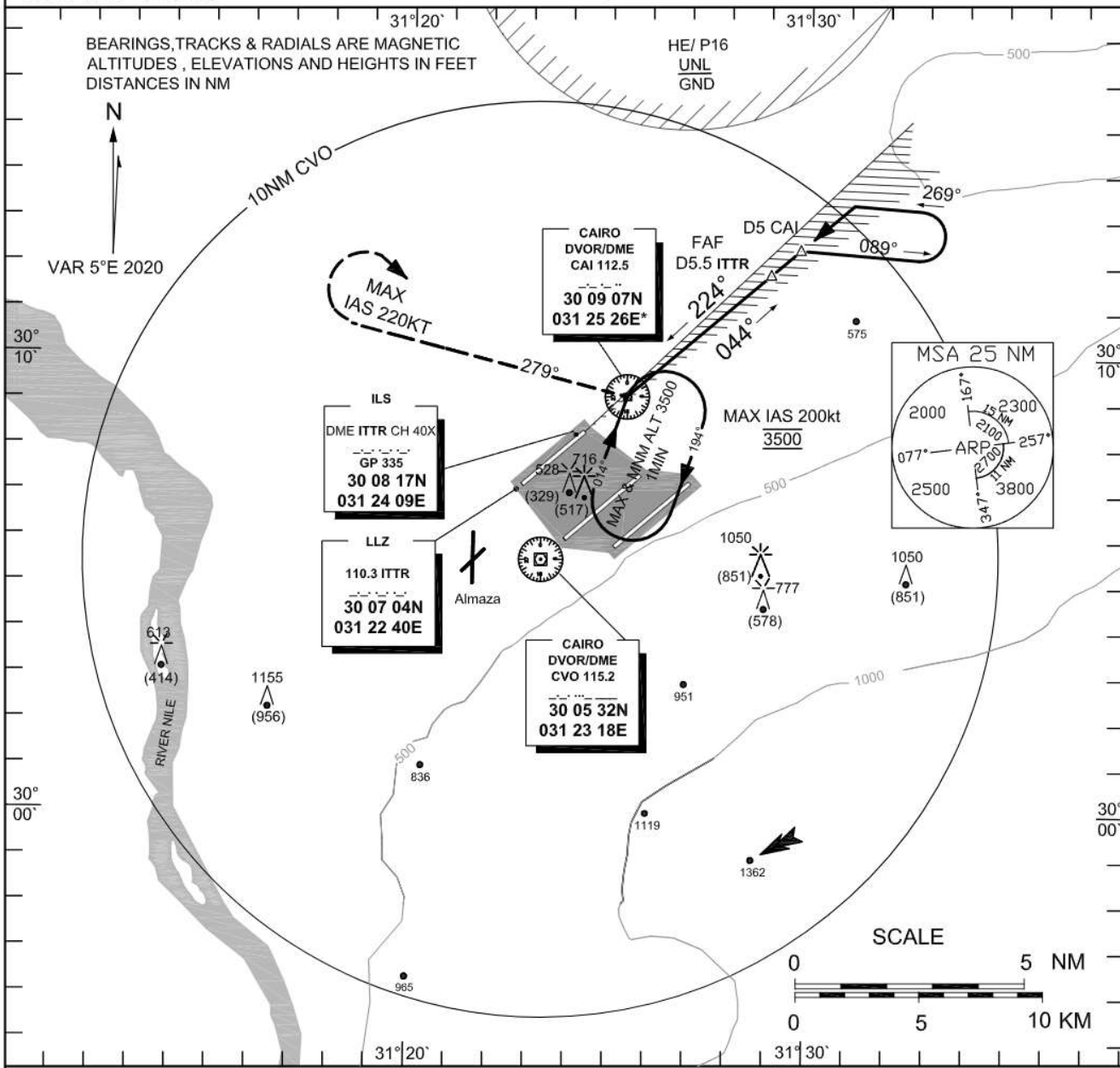
For Simulation Use Only  
Not For Real Life

HECA/CAI

**INSTRUMENT APPROACH CHART-ICAO**      **AERODROME ELEV 467 FT**  
**HEIGHTS RELATED TO THR RWY 23R ELEV 199FT**

APP	119.05	119.975	120.7	124.375	119.55
TWR	118.1	125.875			
PRE-FLIGHT	120.1	127.6			
D-ATIS	122.6				
GND	120.4	121.9	126.375		
EMERG	121.5				

**CAIRO / CAIRO**  
**ILS or LOC**  
**RWY 23R**







---

**CAIRO (HECA)**

**ILS or LOC RWY 23R**

**AERONAUTICAL DATA TABULATION**

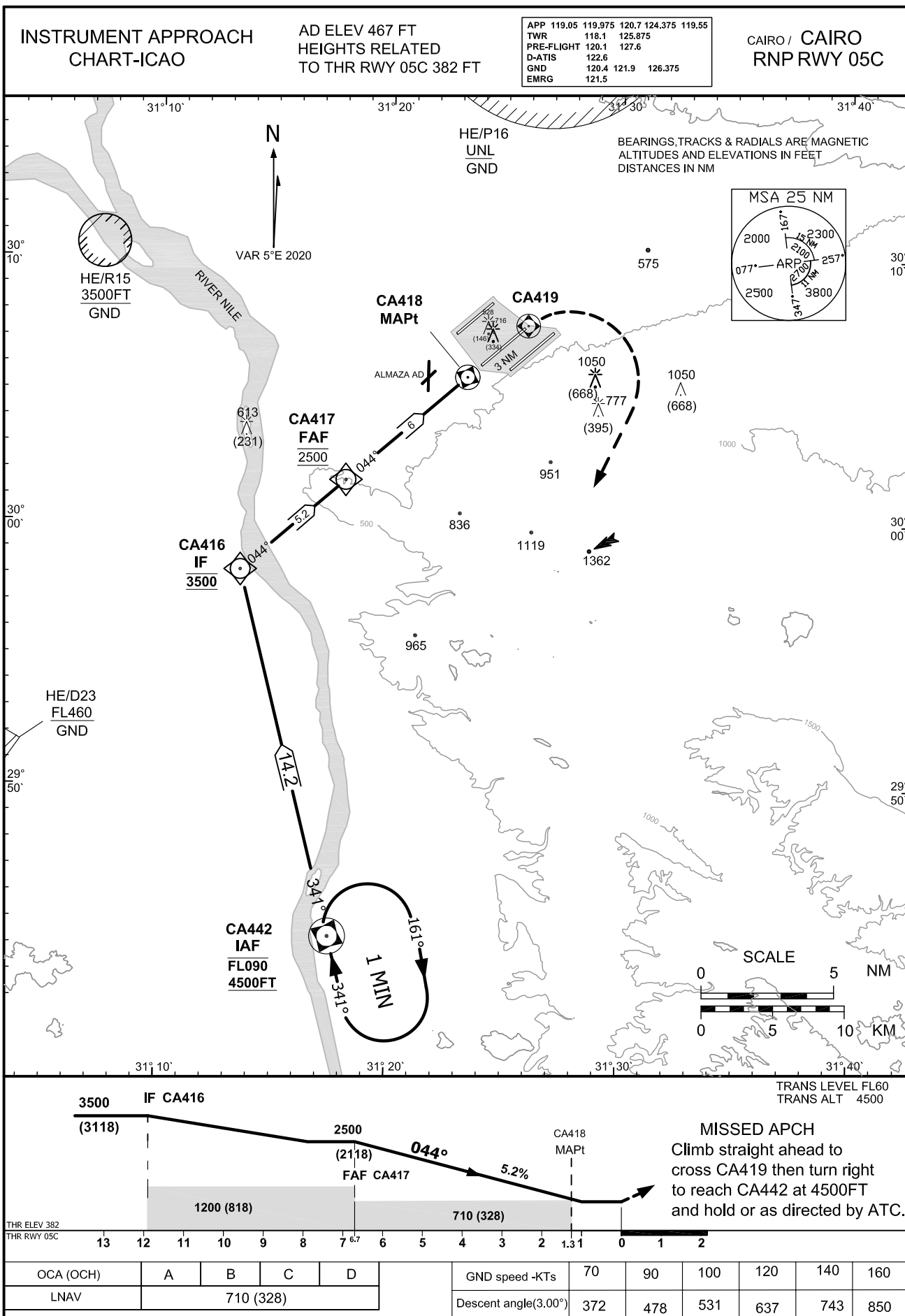
ILS APCH (CAI) to RWY 23R from CAI DVOR/DME	
Fix/point	Coordinates
CAI DVOR/DME (IAF)	30° 09' 07.2"N 031° 25' 26.0"E
D 5 CAI DVOR/DME – RDL 044 (IAF)	30° 12' 21.3"N 031° 29' 46.1"E
D4.1 CAI DVOR/DME – TR 224° (FAP)	30° 11' 48.3"N 031° 29' 01.7"E
(MAPt) CAI /1.4NM ITTR(DME)	30° 09' 07.2"N 031° 25' 26.0"E
THR RWY 23R	30° 08' 20.73"N 031° 24' 22.55"E
ITTR (GP/DME)	30° 08' 16.7"N 031° 24' 09.0"E
ITTR (LZZ)	30° 07' 04.3"N 031° 22' 39.8"E

---



For Simulation Use Only  
Not For Real Life

HECA/CAI





For Simulation Use Only  
Not For Real Life

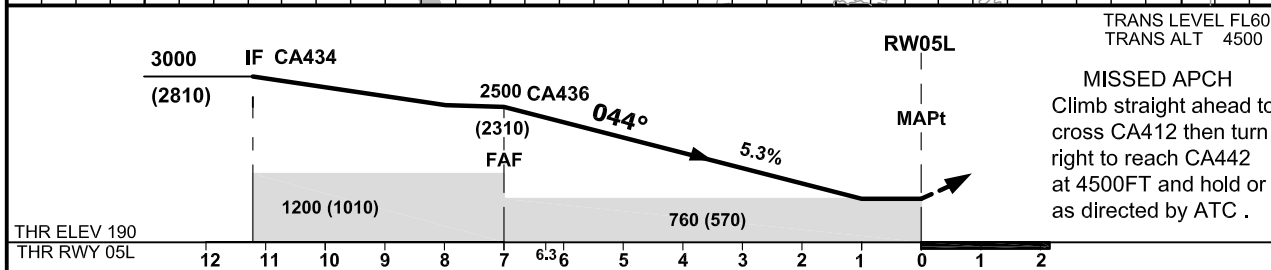
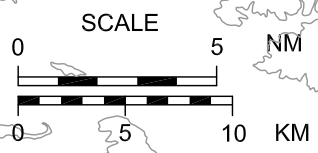
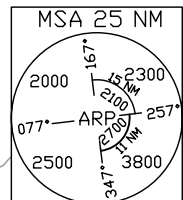
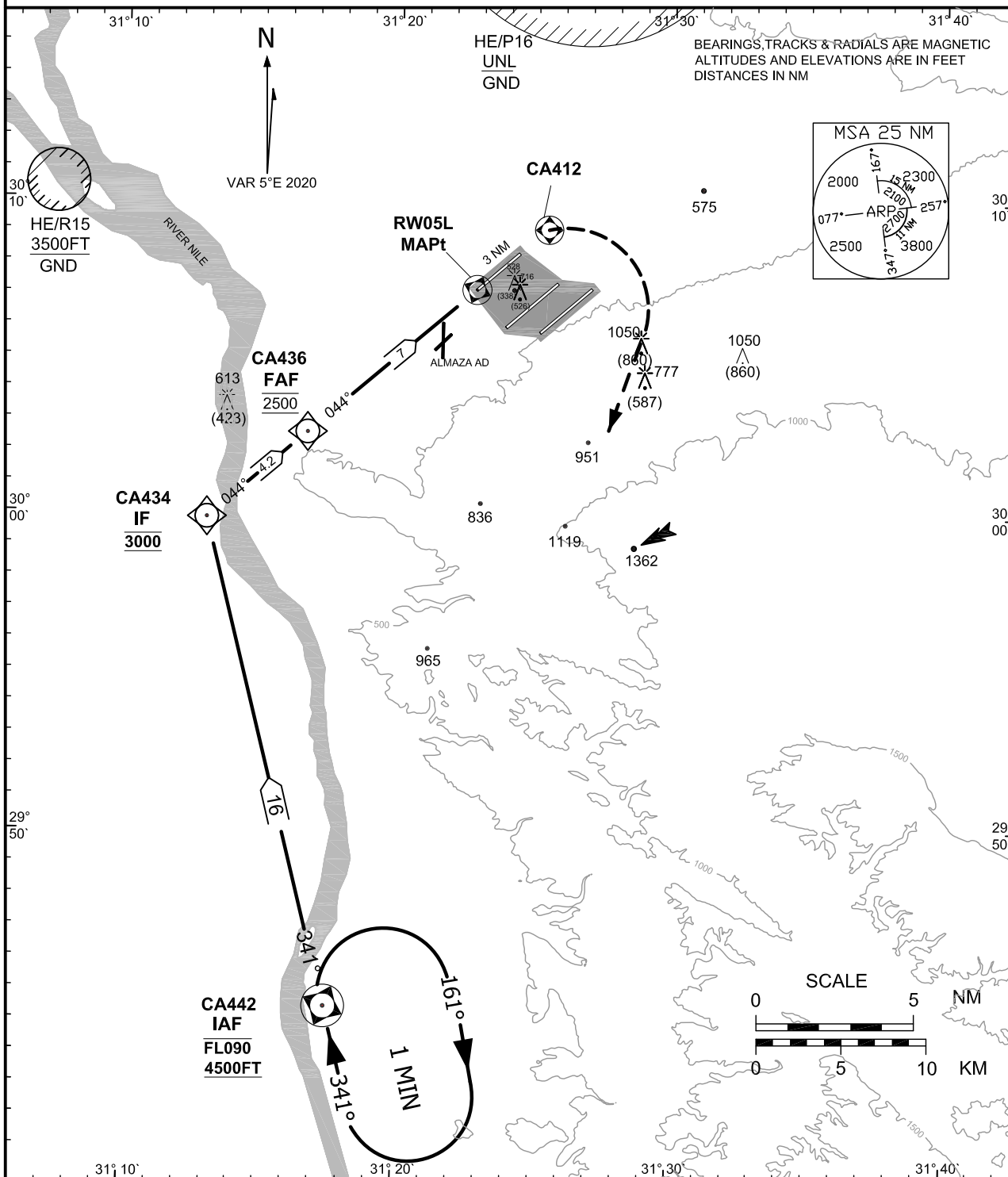
HECA/CAI

**INSTRUMENT APPROACH  
CHART-ICAO**

AD ELEV 467 FT  
HEIGHTS RELATED  
TO THR RWY 05L 190 FT

APP	119.05	119.975	120.7	124.375	119.55
TWR	118.1	125.875			
PRE-FLIGHT	120.1	127.6			
D-ATIS	122.6				
GND	120.4	121.9	126.375		
EMRG	121.5				

**CAIRO / CAIRO  
RNP RWY 05L**



OCA (OCH)				A	B	C	D							
LNAV				760 (570)										
								GND speed -Kts	70	90	100	120	140	160
								Descent angle(3.00°)	372	478	531	637	743	850

TRANS LEVEL FL60  
TRANS ALT 4500

**MISSED APCH**  
Climb straight ahead to cross CA412 then turn right to reach CA442 at 4500FT and hold or as directed by ATC .



For Simulation Use Only  
Not For Real Life

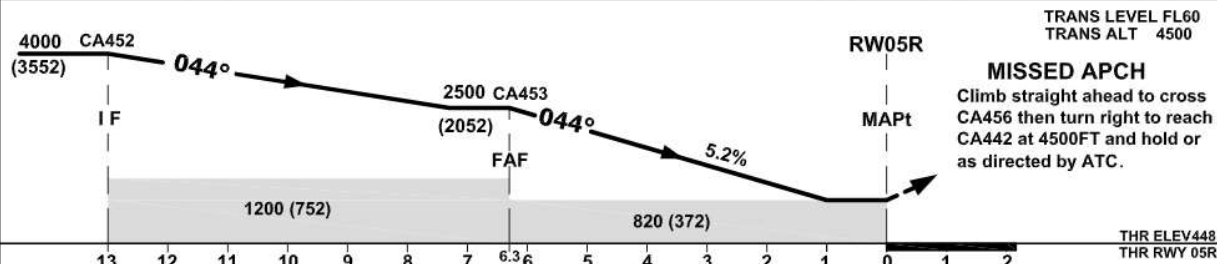
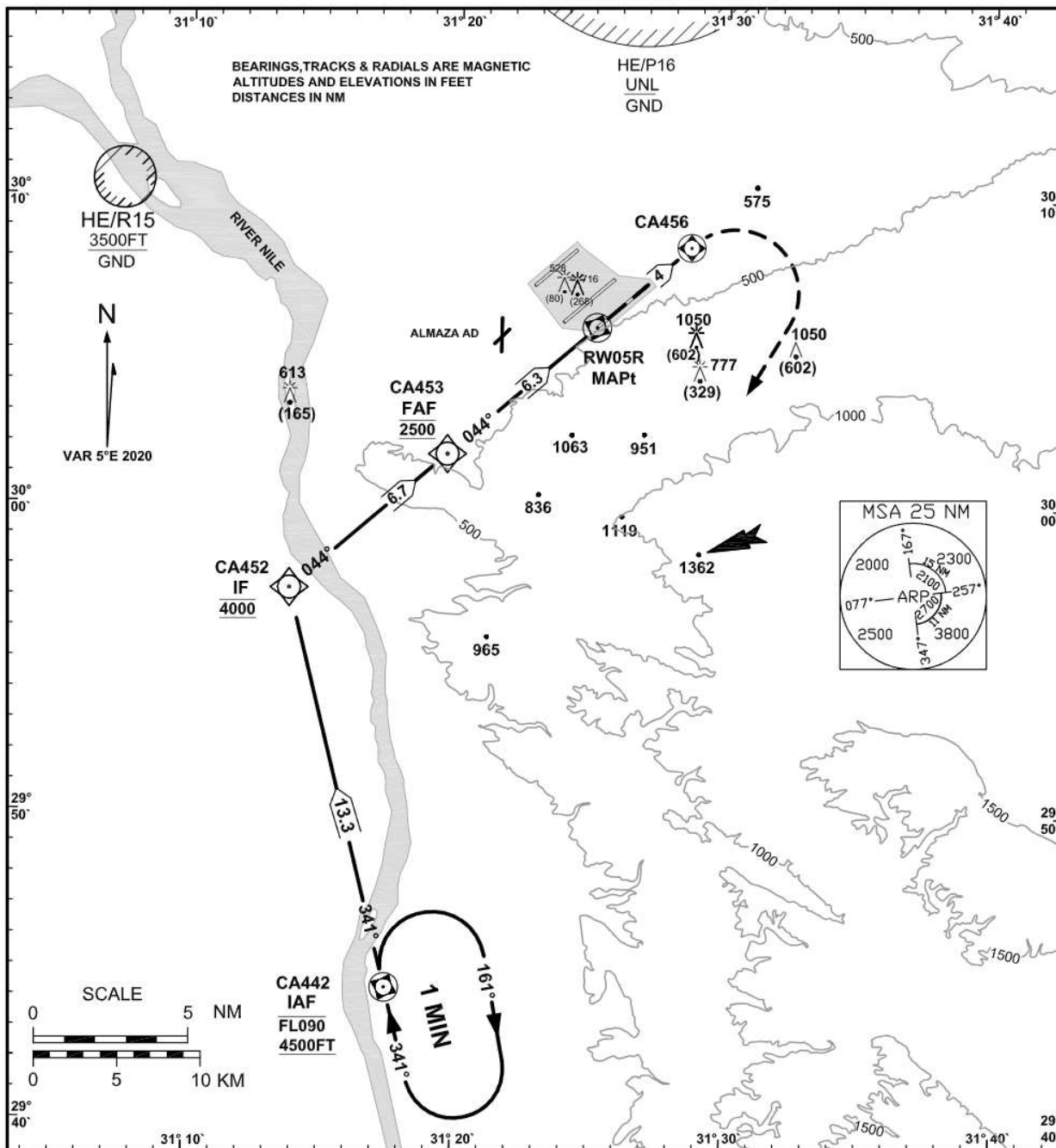
HECA/CAI

**INSTRUMENT APPROACH  
CHART-ICAO**

**AD ELEV 467 FT  
HEIGHTS RELATED  
TO THR RWY 05R 448 FT**

APP	119.05	119.975	120.7	124.375	119.55
TWR	118.1	125.875			
PRE-FLIGHT	120.1	127.6			
D-ATIS	122.6				
GND	120.4	121.9	126.375		
EMRG	121.5				

**CAIRO/ CAIRO  
RNP RWY 05R**



OCA(OCH)	A	B	C	D
LNAV	820 (372)			

GND speed -KTs	70	90	100	120	140	160
Rate of descent (3.00°)	372	478	531	637	743	850



<b>Instrument Approach CHART-ICAO</b>	AD ELEV 467FT HEIGHTS RELATED TO THR RWY 05R ELEV 448FT	APP            119.05 119.975 120.7 124.375 119.55 TWR            118.1 125.875 PRE-FLIGHT 120.1 127.6 D-ATIS        122.6 GND            120.4 121.9 126.375 EMERG        121.5	<b>CAIRO/ CAIRO RNP RWY 05R</b>
---	---	--	-------------------------------------

**TABULAR DESCRIPTION**

Serial Number	Path Descriptor	Waypoint Identifier	Fly-Over	Course °M(°T)	Magnetic Variation	Distance (NM)	Turn Direction	Altitude(FT)	Speed (Kt)	VPA%/TCH(FT)	Navigation Specification
010	IF	CA442	y	-	-5	-	-	+4500	-		RNP APCH
020	TF	CA452	-	341(346)	-5	13.3	R	@3500	-		RNP APCH
010	IF	CA452	-	-	-5	-	-	@3500	-		RNP APCH
020	TF	CA453	-	044(049)	-5	6.7	-	@2500	-		RNP APCH
030	TF	RW05R	y	044(049)	-5	6.3	-	-	-	-3.0/50	RNP APCH
040	TF	CA456	y	044(049)	-5	4	-	-	-		RNP APCH
050	DF	CA442	y	-	-5	-	R	@4500	-		RNP APCH
060	HM	CA442	y	341(346)	-5	I MIN	R	+4500 -FL090	-		RNP APCH

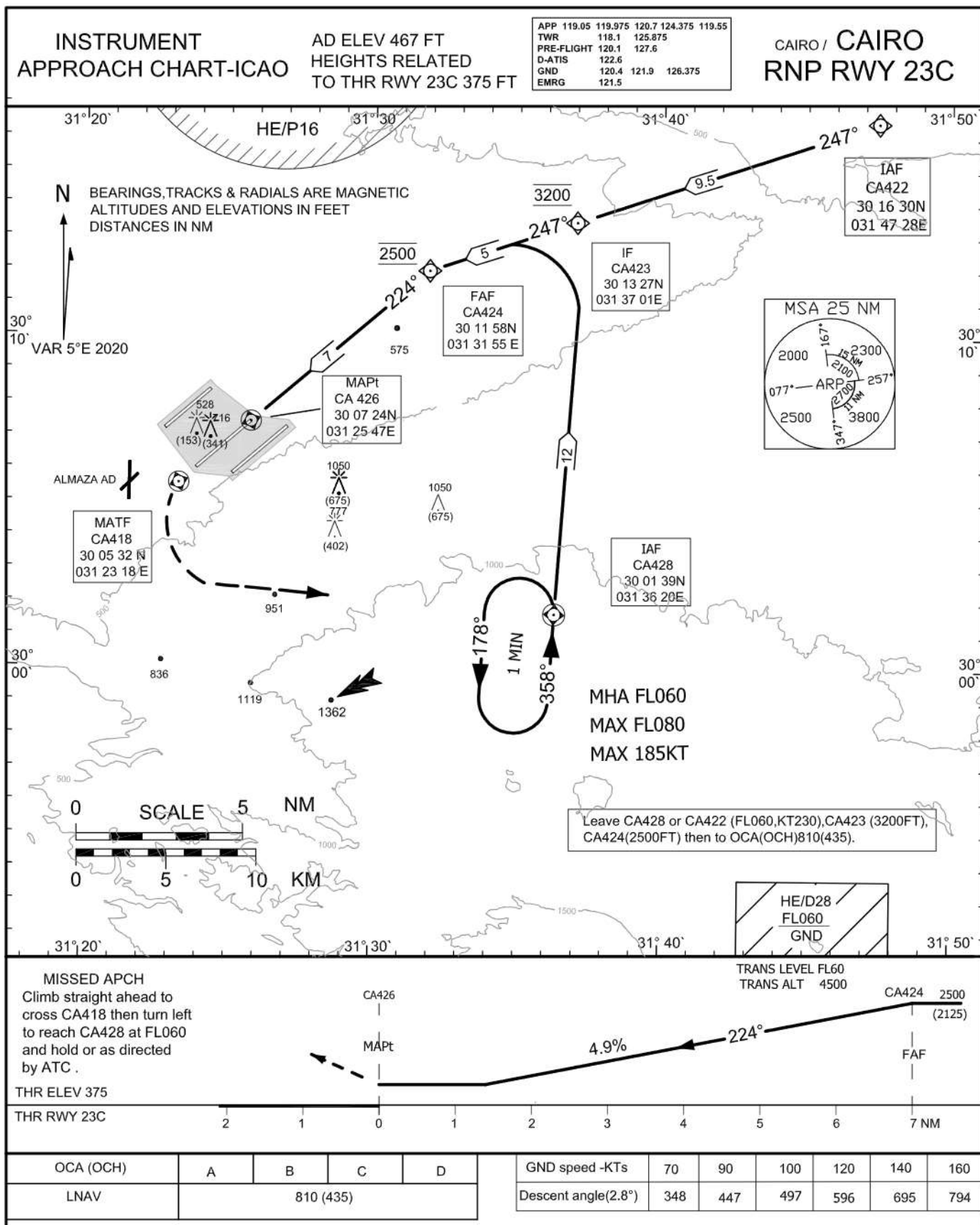
**Waypoint Coordinates**

Waypoint Identifier	Coordinates
CA442	29° 44' 19.99"N 031° 17' 31.00"E
CA452	29° 57' 16.96"N 031° 13' 47.26"E
CA453	30° 01' 40.57"N 031° 19' 37.12"E
RW05R	30° 05' 49.78"N 031° 25' 08.65"E
CA456	30° 08' 26.98"N 031° 28' 38.17"E



For Simulation Use Only  
Not For Real Life

HECA/CAI





For Simulation Use Only  
Not For Real Life

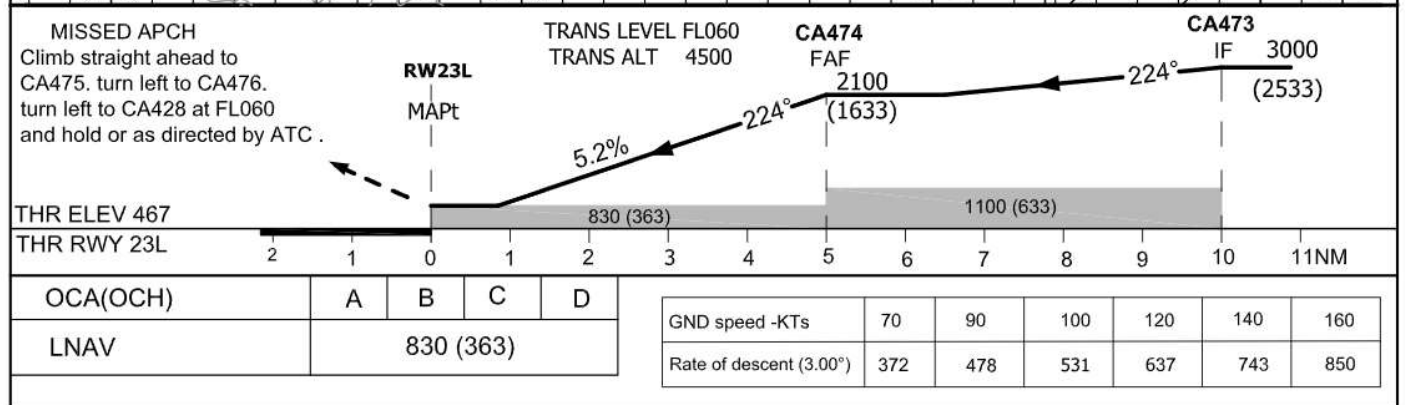
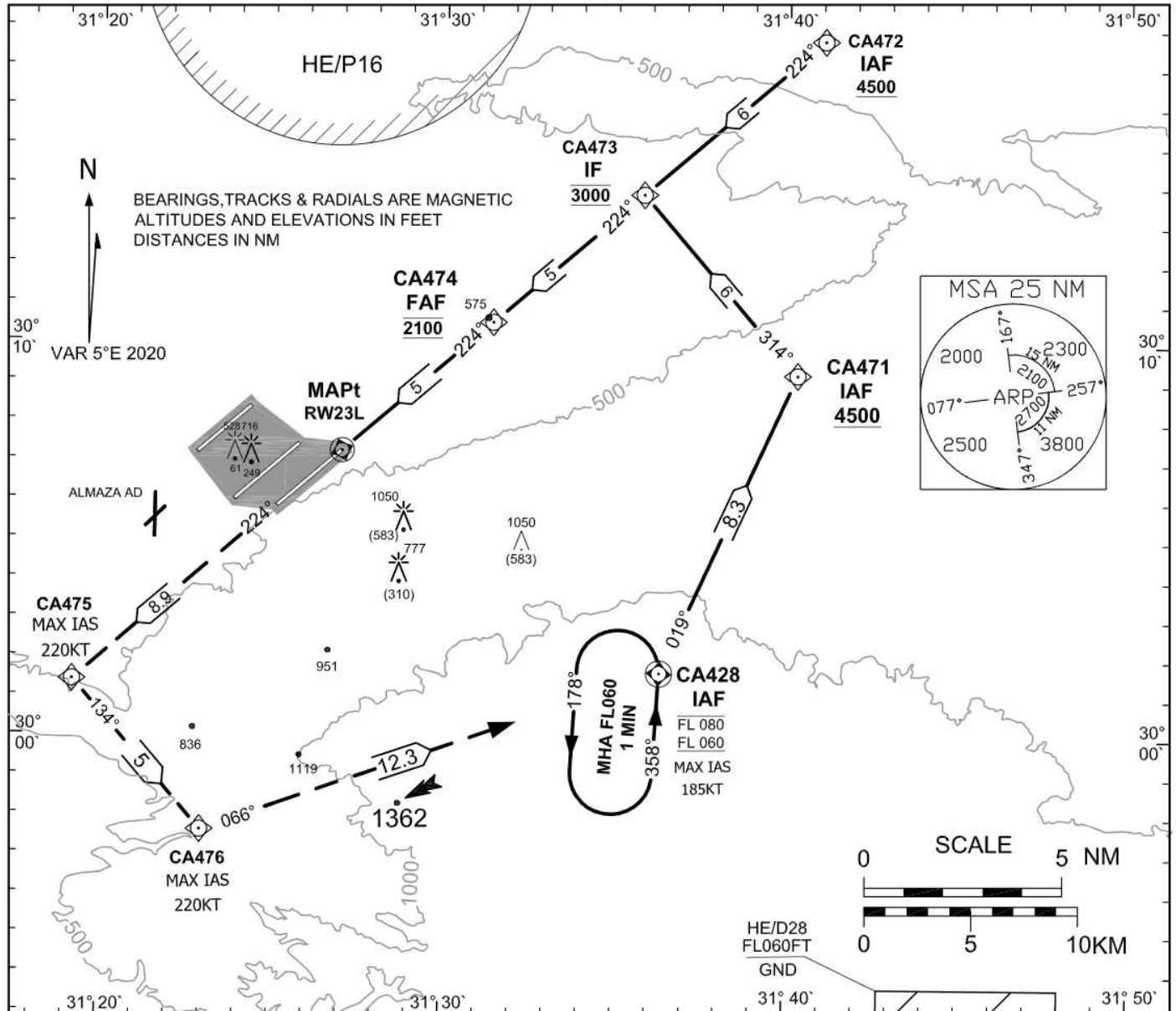
HECA/CAI

**INSTRUMENT APPROACH  
CHART-ICAO**

**AD ELEV 467 FT  
HEIGHTS RELATED  
TO AD ELEV**

APP	119.05	119.975	120.7	124.375	119.55
TWR	118.1	125.875			
PRE-FLIGHT	120.1	127.6			
D-ATIS	122.6				
GND	120.4	121.9	126.375		
EMRG	121.5				

**CAIRO / CAIRO  
RNP RWY 23L**





<b>Instrument Approach CHART-ICAO</b>	AD ELEV 467FT HEIGHTS RELATED TO THR RWY 23L ELEV 467FT	APP            119.05 119.975 120.7 124.375 119.55 TWR            118.1 125.875 PRE-FLIGHT 120.1 127.6 D-ATIS        122.6 GND            120.4 121.9 126.375 EMERG        121.5	<b>CAIRO/ CAIRO RNP RWY 23L</b>
---	---	--	-------------------------------------

**TABULAR DESCRIPTION**

Serial Number	Path Descriptor	Waypoint Identifier	Fly-Over	Course °M(°T)	Magnetic Variation	Distance (NM)	Turn Direction	Altitude(FT)	Speed (Kt)	VPA°/ TCH(FT)	Navigation Specification
010	IF	CA428	y	-	-5	-	-	+FL060 -FL080	-		RNP APCH
020	TF	CA471	-	019(024.4)	-5	8.3	L	+4500	-		RNP APCH
030	TF	CA473	-	314(319.3)	-5	6	L	@3000	-		RNP APCH
010	IF	CA472	-	-	-5	-	-	+4500	-		RNP APCH
020	TF	CA473	-	224(229.3)	-5	6	-	@3000	-		RNP APCH
010	IF	CA473	-	-	-5	-	-	@3000	-		RNP APCH
020	TF	CA474	-	224(229.3)	-5	5	-	@2100	-		RNP APCH
030	TF	RW23L	y	224(229.2)	-5	5	-	-	-	-3.0 /50	RNP APCH
040	TF	CA475	-	224(229.2)	-5	8.9	L	-	-220		RNP APCH
050	TF	CA476	-	134(139.1)	-5	5	L	-	-220		RNP APCH
060	TF	CA428	y	066(070.6)	-5	12.3	-	@FL060	-		RNP APCH
070	HM	CA428	y	358(003.3)	-5	1 MIN	L	+FL060 -FL080	-185		RNP APCH

**Waypoint Coordinates**

Waypoint Identifier	Coordinates
CA428	30° 01' 39.00"N 031° 36' 20.00" E
CA471	30° 09' 13.86"N 031° 40' 17.93" E
CA472	30° 17' 43.14"N 031° 41' 01.89" E
CA473	30° 13' 47.77"N 031° 35' 46.68" E
CA474	30° 10' 31.48"N 031° 31' 24.33" E
RW23L	30° 07' 14.66"N 031° 27' 01.74" E
CA475	30° 01' 22.85"N 031° 19' 13.55" E
CA476	29° 57' 35.32"N 031° 22' 59.50" E





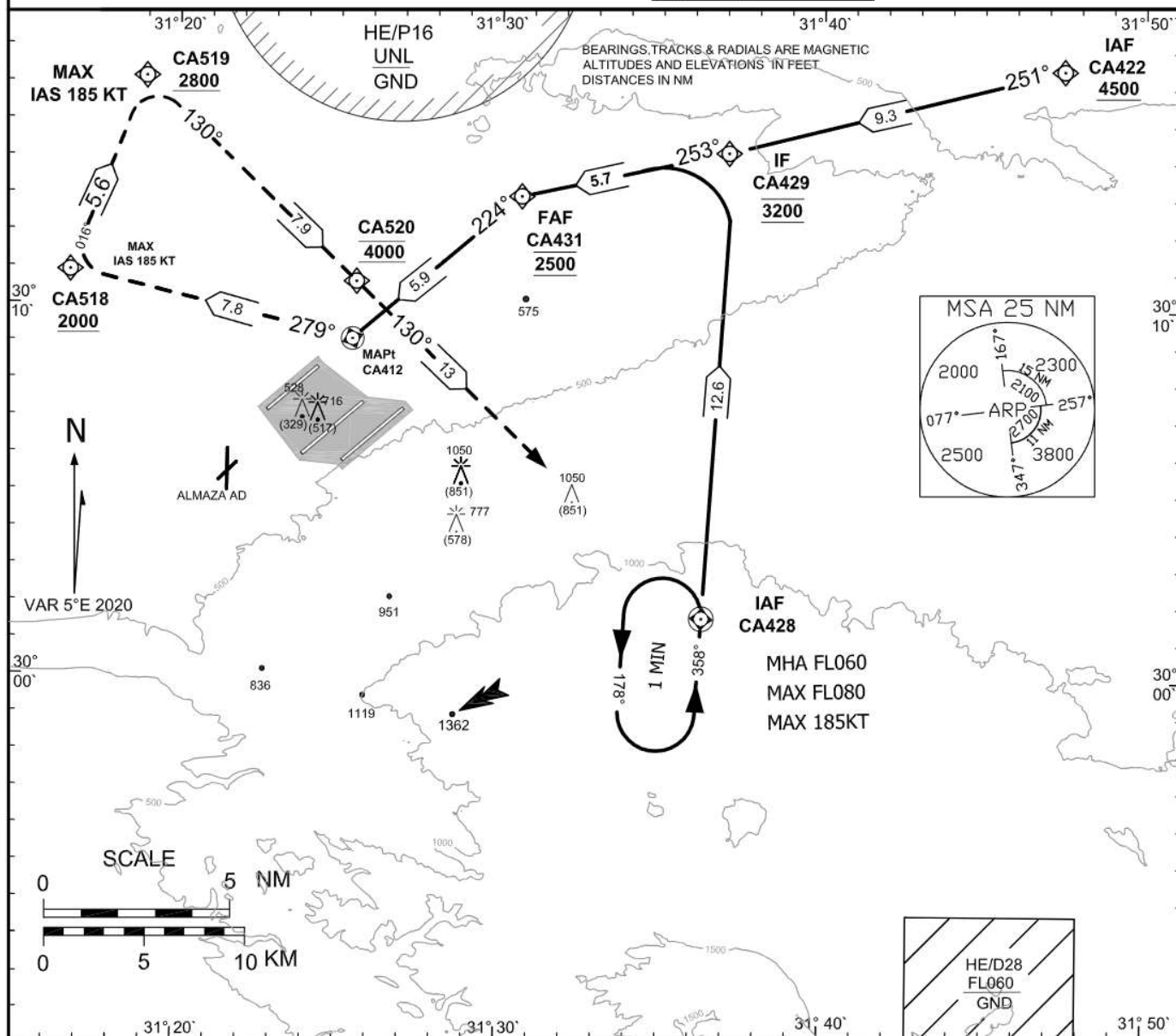
For Simulation Use Only  
Not For Real Life

HECA/CAI

**INSTRUMENT APPROACH CHART-ICAO** AD ELEV 467 FT HEIGHTS RELATED TO THR RWY 23R 199 FT

APP	119.05	119.975	120.7	124.375	119.55
TWR	118.1	125.875			
PRE-FLIGHT	120.1	127.6			
D-ATIS	122.6				
GND	120.4	121.9	126.375		
EMRG	121.5				

CAIRO / CAIRO  
RNP RWY 23R

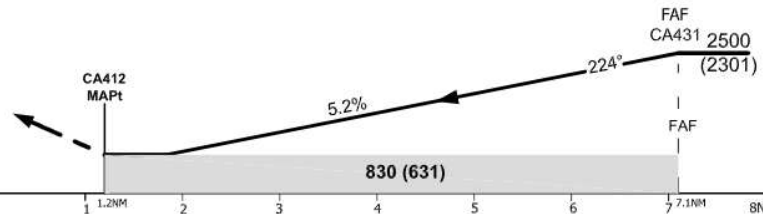


TRANS LEVEL FL060  
TRANS ALT 4500

**MISSED APCH**

Climb Immediate Right Turn on TR 279° to CA518 at ALT 2000 or above, then Right turn to CA519 at ALT 2800 or above, then Right turn to CA520 at ALT 4000 then to CA428 at FL060 and hold or as directed by ATC.

THR ELEV 199  
THR RWY 23R



OCA (OCH)	A	B	C	D	GND speed -Kts	70	90	100	120	140	160
LNAV	830 (631)				Descent angle(3.00°)	372	478	531	637	743	850



<b>Instrument Approach CHART-ICAO</b>	AD ELEV 467ft HEIGHTS RELATED TO THR RWY 23R ELEV 199FT	APP            119.05 119.975 120.7 124.375 119.55 TWR            118.1 125.875 PRE-FLIGHT 120.1 127.6 D-ATIS        122.6 GND            120.4 121.9 126.375 EMERG        121.5	<b>CAIRO/ CAIRO RNP RWY 23R</b>
---	---	--	-------------------------------------

**TABULAR DESCRIPTION**

Serial Number	Path Descriptor	Waypoint Identifier	Fly-Over	Course °M(°T)	Magnetic Variation	Distance (NM)	Turn Direction	Altitude(FT)	Speed (Kt)	VPA°/TCH(FT)	Navigation Specification
010	IF	CA422	-	-	-5	-	-	+4500	-		RNP APCH
020	TF	CA429	-	251(256)	-5	9.3	-	@3200	-		RNP APCH
010	IF	CA428	y	-	-5	-	-	+FL060	-		RNP APCH
020	TF	CA429	-	358(003)	-5	12.6	L	@3200	-		RNP APCH
010	IF	CA429	-	-	-5	-	-	@3200	-		RNP APCH
020	TF	CA431	-	253(258)	-5	5.7	L	@2500	-		RNP APCH
030	TF	CA 412	y	224(229)	-5	5.9	R	-	-	-3.0 /50	RNP APCH
040	TF	CA518	-	279(284)	-5	7.8	R	+2000	-185		RNP APCH
050	TF	CA519	-	016(021)	-5	5.6	R	+2800	-185		RNP APCH
060	TF	CA520	-	130(135)	-5	7.9	-	@4000	-185		RNP APCH
070	TF	CA428	y	130(135)	-5	13	L	@FL060	-185		RNP APCH
080	HM	CA428	y	178(183)	-5	1 MIN	L	+FL060 -FL080	-185		RNP APCH

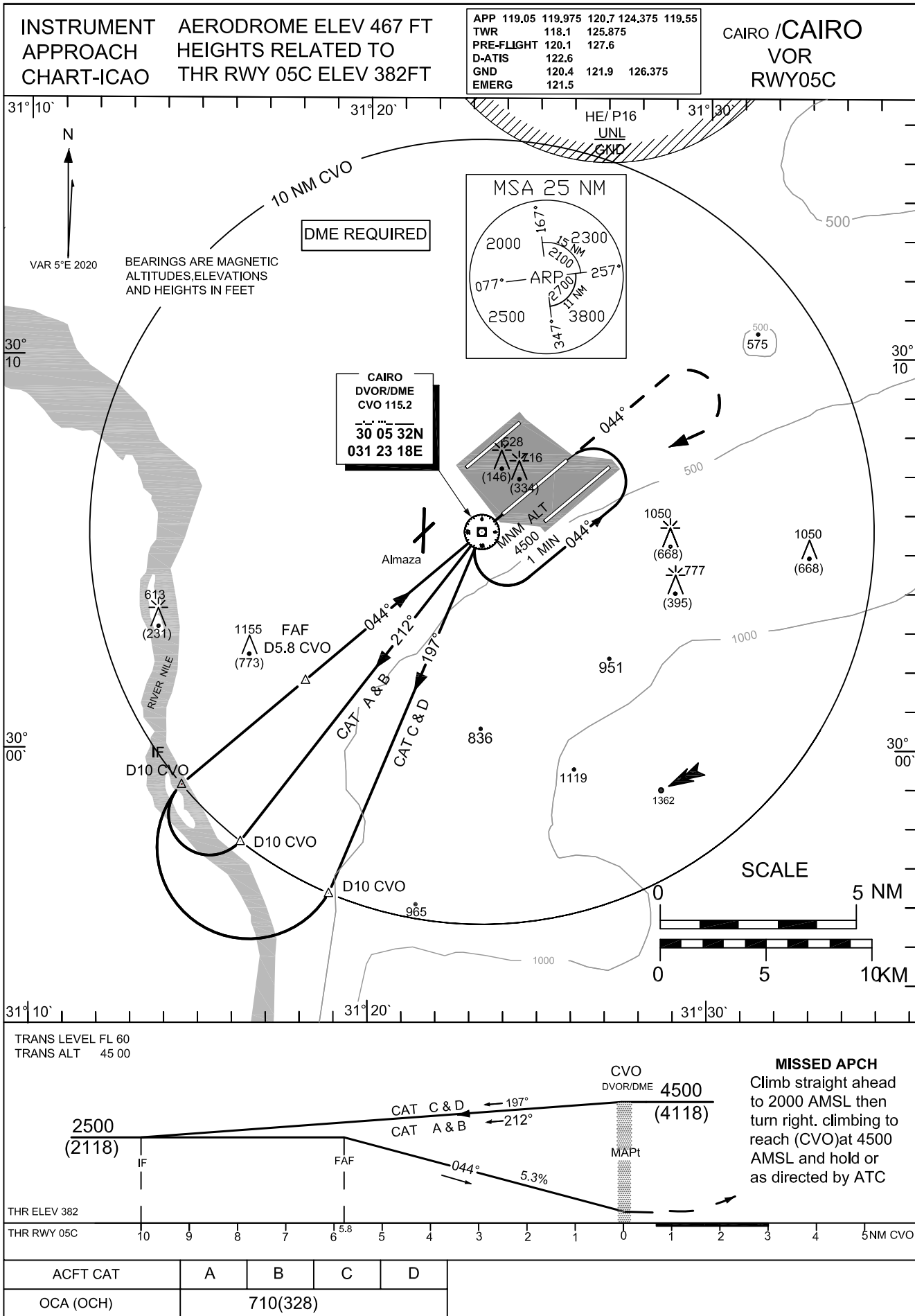
**Waypoint Coordinates**

Waypoint Identifier	Coordinates
CA412	30° 09' 07.00"N 031° 25' 26.00" E
CA422	30° 16' 29.51"N 031° 47' 27.74" E
CA428	30° 01' 39.00"N 031° 36' 20.00" E
CA429	30° 14' 12.84"N 031° 37' 03.43" E
CA431	30° 12' 59.88"N 031° 30' 38.31" E
CA518	30° 10' 54.38"N 031° 16' 39.16" E
CA519	30° 16' 09.01"N 031° 18' 57.61" E
CA520	30° 10' 39.85"N 031° 25' 32.19" E



For Simulation Use Only  
Not For Real Life

HECA/CAI





CAIRO (HECA)

VOR RWY 05C

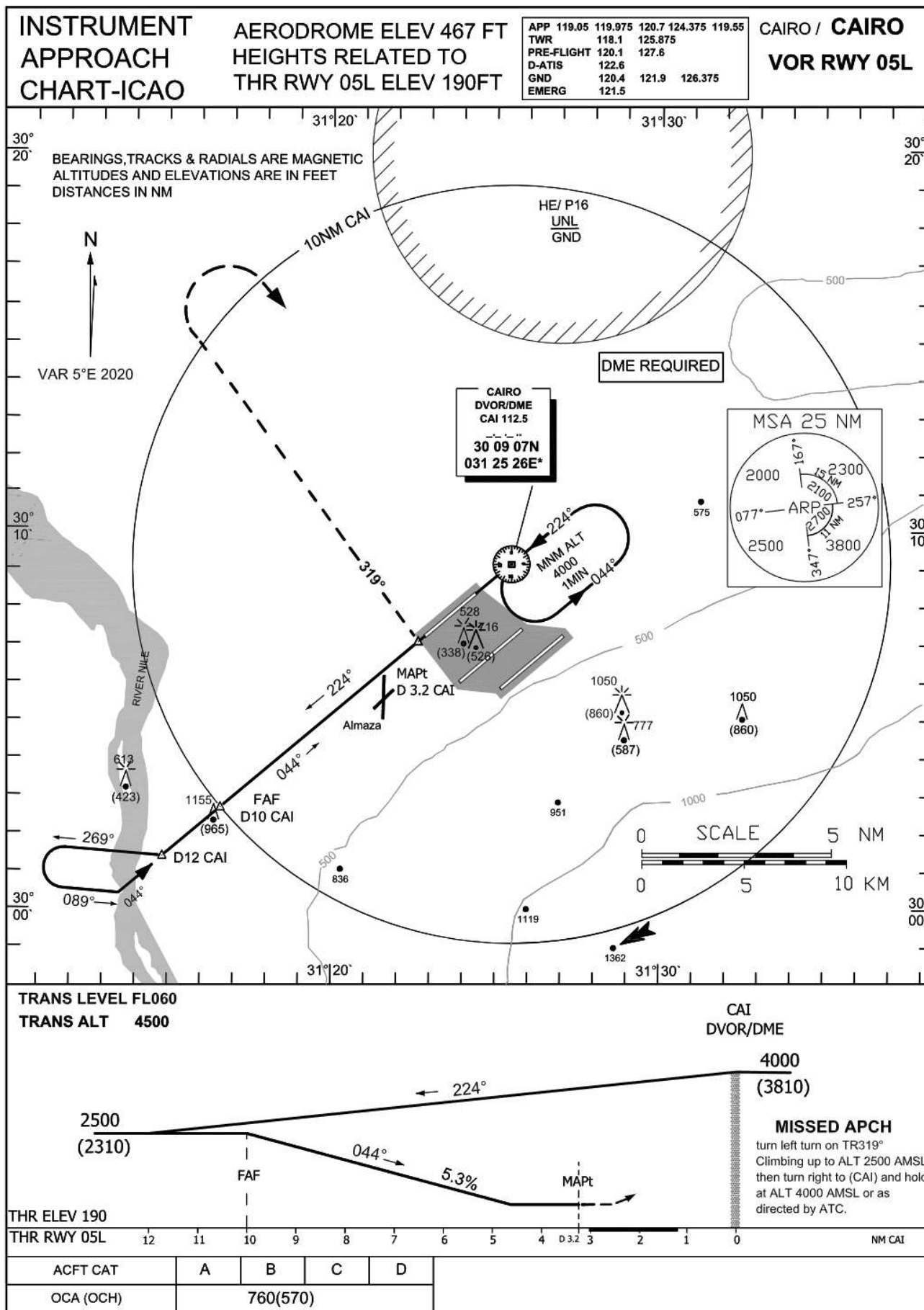
AERONAUTICAL DATA TABULATION

VOR APCH to RWY 05C from CVO DVOR/DME	
Fix/point	Coordinates
CVO DVOR/DME (IAF)	30° 05' 32.3"N 031° 23' 18.3"E
D 10 CVO - TR197° CAT C&D	29° 56' 15.4"N 031° 18' 57.1"E
D 10 CVO - TR212° CAT A&B	29° 57' 33.2"N 031° 16' 20.4"E
D 10 CVO - TR 044° (IF)	29° 58' 58.9"N 031° 14' 35.0"E
D 5.8 CVO - TR 044° (FAF)	30° 01' 41.6" N 031° 18' 10.9" E
(MAPt) is CVO	30° 05' 32.3"N 031° 23' 18.3"E
THR RWY 05C	30° 05' 58.88"N 031° 23' 53.64"E



For Simulation Use Only  
Not For Real Life

HECA/CAI





CAIRO (HECA)

VOR RWY 05L

## AERONAUTICAL DATA TABULATION

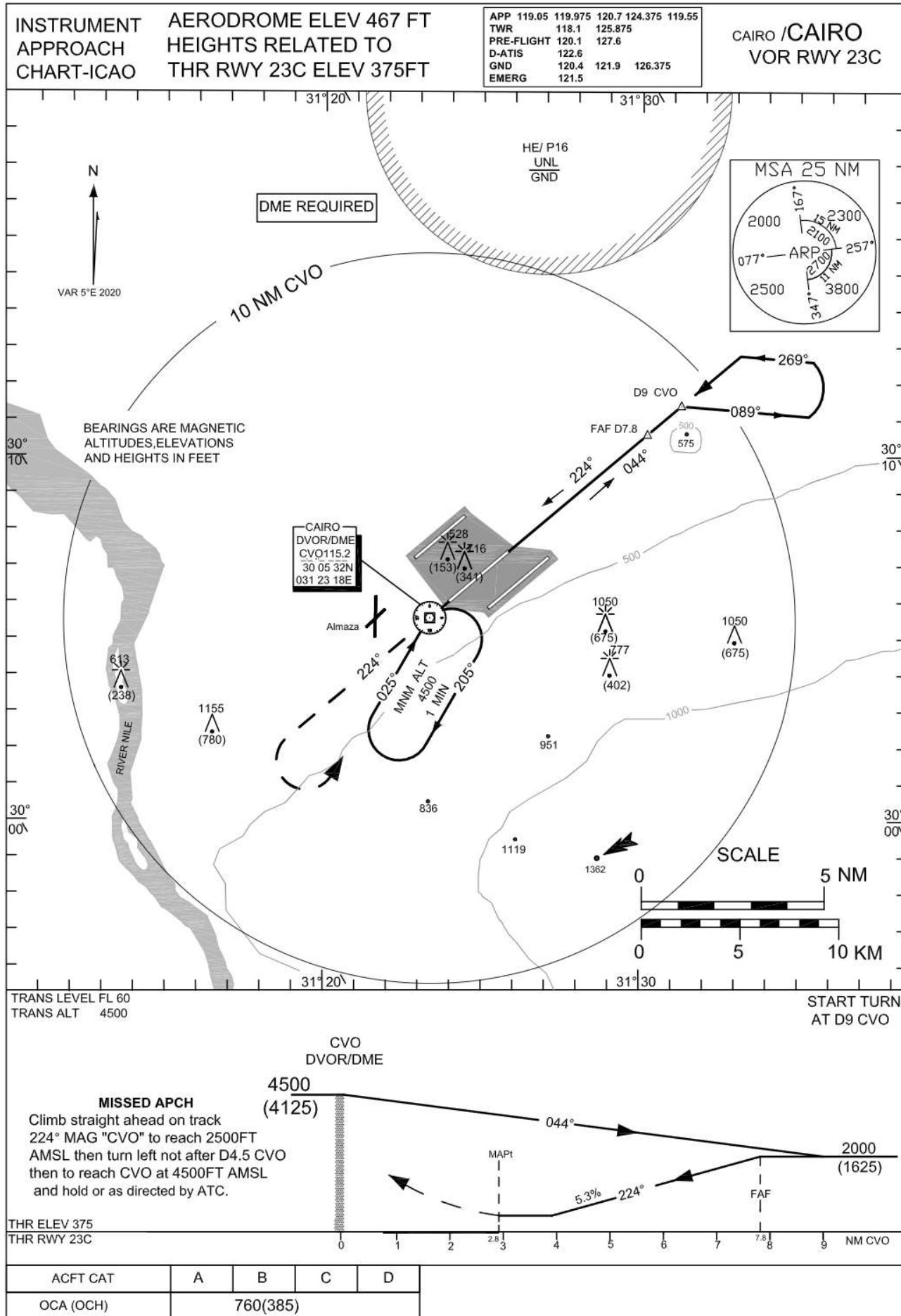
### VOR (CAI) to RWY 05L from CAI DVOR/DME

Fix/point	Coordinates
CAI DVOR/DME (IAF)	30° 09' 07.2"N 031° 25' 26.0"E
D12 CAI –TR224°/12NM CAI	30° 01' 17.97"N 031° 14' 55.33"E
D10 CAI –TR 044°/10NM CAI (FAF)	30° 02' 36.16"N 031° 16' 40.26"E
(MAPt) BRG 224.49°/D3.2 CAI	30° 07' 02.45"N 031° 22' 37.35"E
THR RWY 05L	30° 07' 11.03"N 031° 22' 48.88"E



For Simulation Use Only  
Not For Real Life

HECA/CAI





**CAIRO (HECA)**

VOR RWY 23C

**AERONAUTICAL DATA TABULATION**

<b>VOR APCH to RWY 23C from CVO DVOR/DME</b>	
<b>Fix/point</b>	<b>Coordinates</b>
CVO DVOR/DME (IAF)	30° 05' 32.3"N 031° 23' 18.3"E
D9 CVO –TR 044°/9NM CVO	30° 11' 25.6"N 031° 31' 09.7"E
D7.8 ITTC –TR 224°/7.8NM ITTC (FAF)	30° 10' 37.9" N 031° 30' 6.0"E
(MAPt) BRG 044.0°/ 2.8NM CVO	30° 07' 24.4"N 031° 25' 46.8" E
THR RWY 23C	30° 07' 23.77"N 031° 25' 46.69"E





For Simulation Use Only  
Not For Real Life

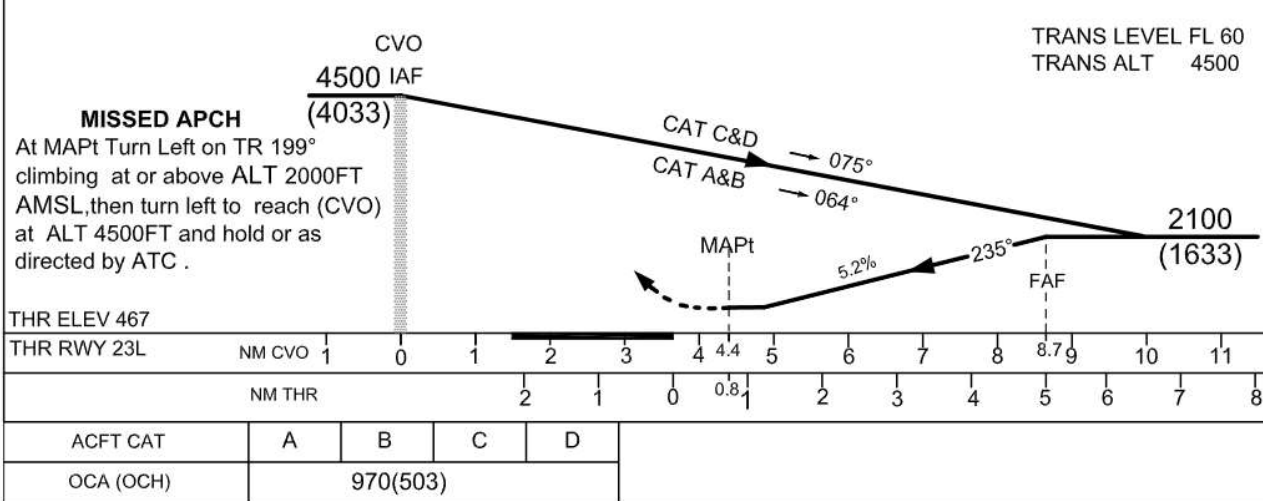
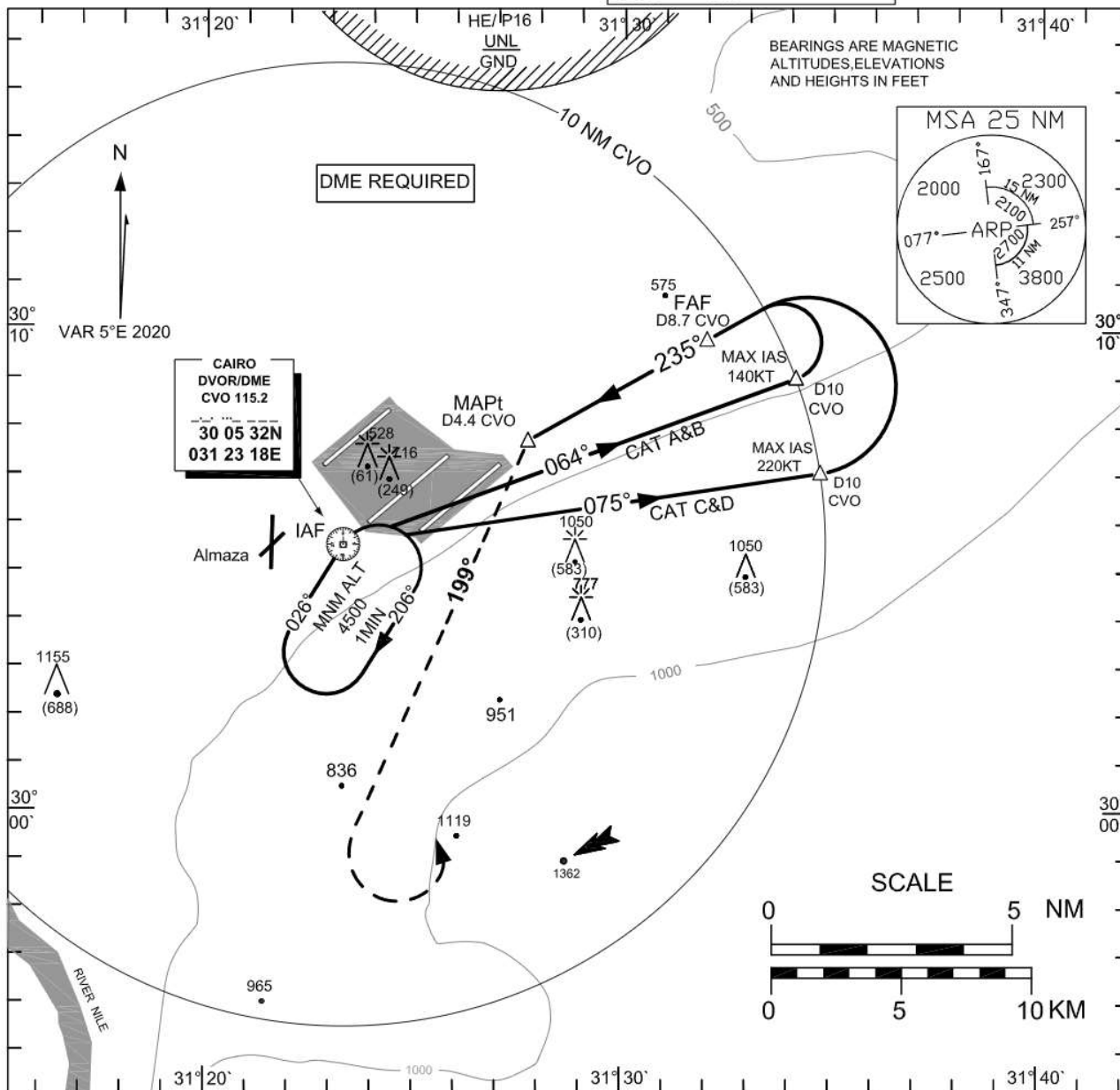
HECA/CAI

INSTRUMENT  
APPROACH  
CHART-ICAO

AERODROME ELEV 467FT  
HEIGHTS RELATED TO  
AD ELEVATION

APP	119.05	119.975	120.7	124.375	119.55
TWR	118.1	125.875			
PRE-FLIGHT	120.1	127.6			
D-ATIS	122.6				
GND	120.4	121.9	126.375		
EMERG	121.5				

CAIRO /CAIRO  
VOR  
RWY 23L





CAIRO (HECA)

VOR RWY 23L

## AERONAUTICAL DATA TABULATION

VOR (CVO) APCH to RWY 23L from CVO DVOR/DME	
Fix/point	Coordinates
CVO DVOR/DME (IAF)	30° 05' 32.3"N 031° 23' 18.3"E
D10 CVO –TR075°/10NM CVO FOR ACFT(C&D)	30° 07' 07.4"N 031° 34' 41.12"E
D10 CVO –TR064°/10NM CVO FOR ACFT (A&B)	30° 09' 05.4"N 031°34' 04.90"E
D8.7 CVO – TR235°/8.7NM CVO (FAF)	30° 09' 52.37"N 031° 31' 56.54"E
(MAPt ) BRG 055.04°/ 4.4 NM CVO	30° 07' 44.00"N 031° 27' 41.24"E
THR RWY 23L	30°07' 14.66"N 031° 27' 01.74"E



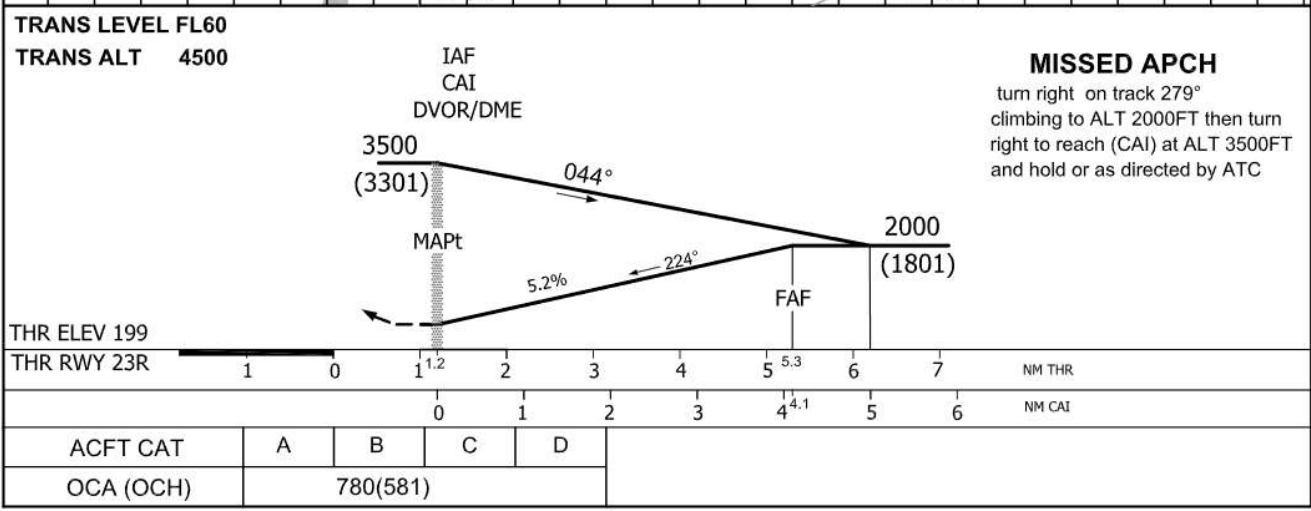
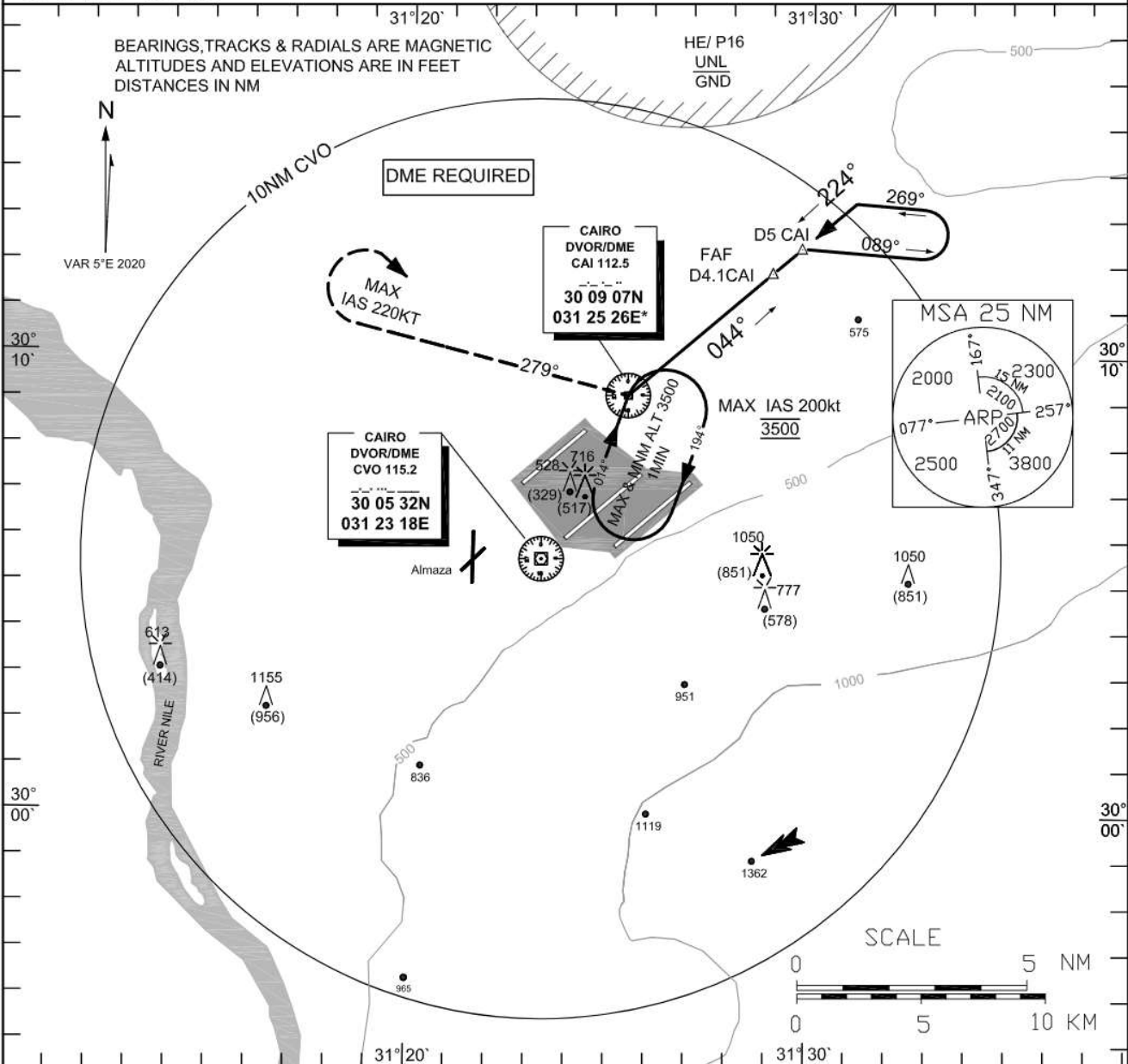
For Simulation Use Only  
Not For Real Life

HECA/CAI

**INSTRUMENT APPROACH CHART-ICAO**      **AERODROME ELEV 467 FT**  
**HEIGHTS RELATED TO THR RWY 23R ELEV 199FT**

APP	119.05	119.975	120.7	124.375	119.55
TWR		118.1	125.875		
PRE-FLIGHT	120.1	127.6			
D-ATIS	122.6				
GND	120.4	121.9	126.375		
EMERG	121.5				

**CAIRO / CAIRO VOR RWY 23R**





---

CAIRO (HECA)

VOR RWY 23R

## AERONAUTICAL DATA TABULATION

VOR (CAI) to RWY 23R from CAI DVOR/DME	
Fix/point	Coordinates
CAI DVOR/DME (IAF)	30° 09' 07.2"N 031° 25' 26.0"E
D 5 CAI DVOR/DME – RDL 044(IAF)	30° 12' 21.3"N 031° 29' 46.1"E
D4.1 CAI DVOR/DME – TR 224 (FAF)	30° 11' 48.3"N 031° 29' 01.7"E
(MAPt) CAI	30° 09' 07.2"N 031° 25' 26.0"E
THR RWY 23R	30° 08' 20.73"N 031° 24' 22.55"E

---