



For Simulation Use Only
Not For Real life

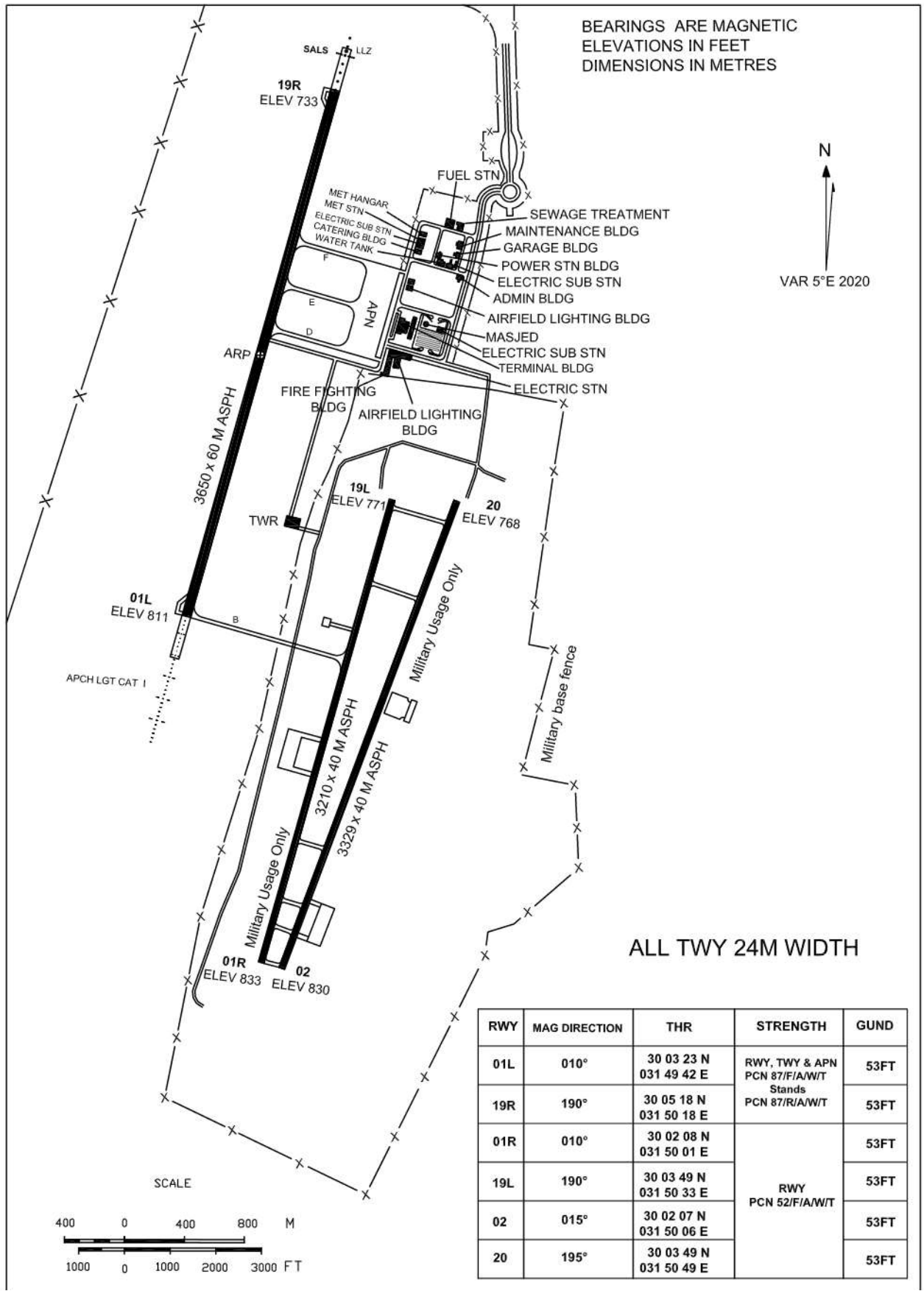
HECP/CCE

AERODROME CHART - ICAO

30° 04' 20" N
031° 50' 00" E ELEV 833FT

TWR	118.9 & 118.350
EMERG	121.5
GND	121.925

Cairo / Capital





**For Simulation Use Only
Not For Real life**

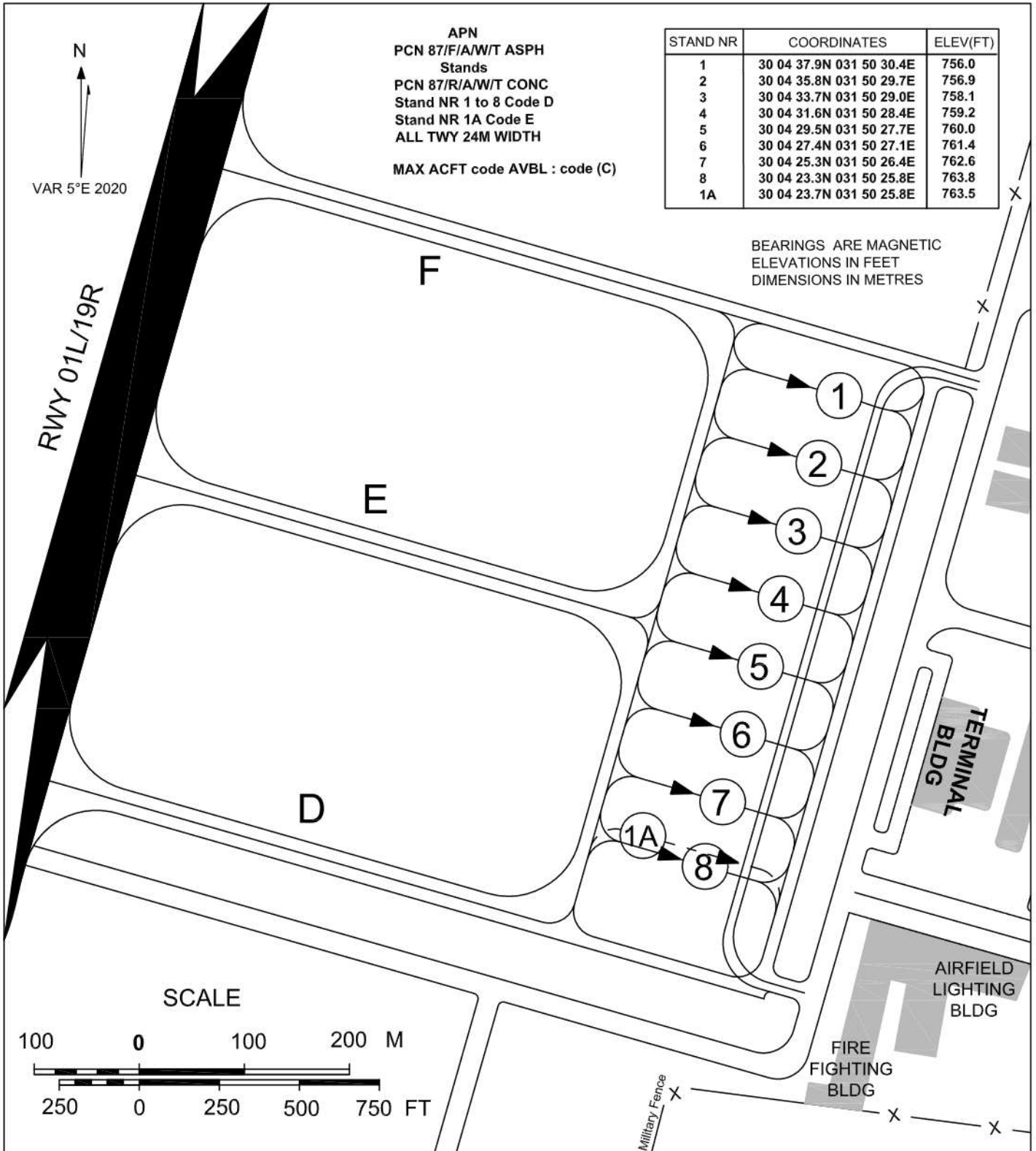
HECP/CCE

**AIRCRAFT PARKING /
DOCKING CHART - ICAO**

APN ELEV 764FT

TWR	118.9 & 118.350
EMERG	121.5
GND	121.925

Cairo / Capital





For Simulation Use Only
Not For Real Life

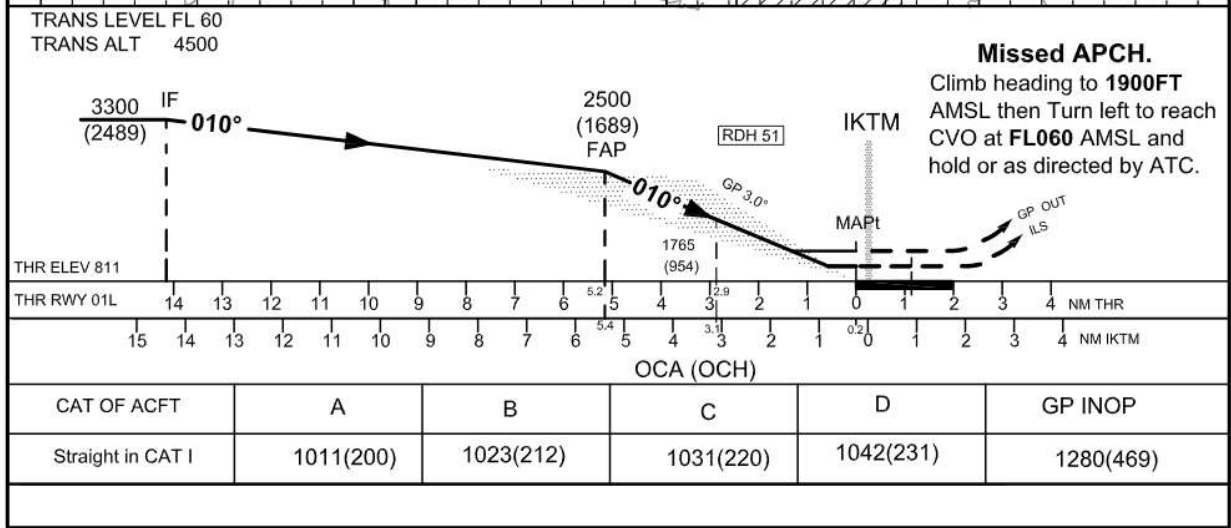
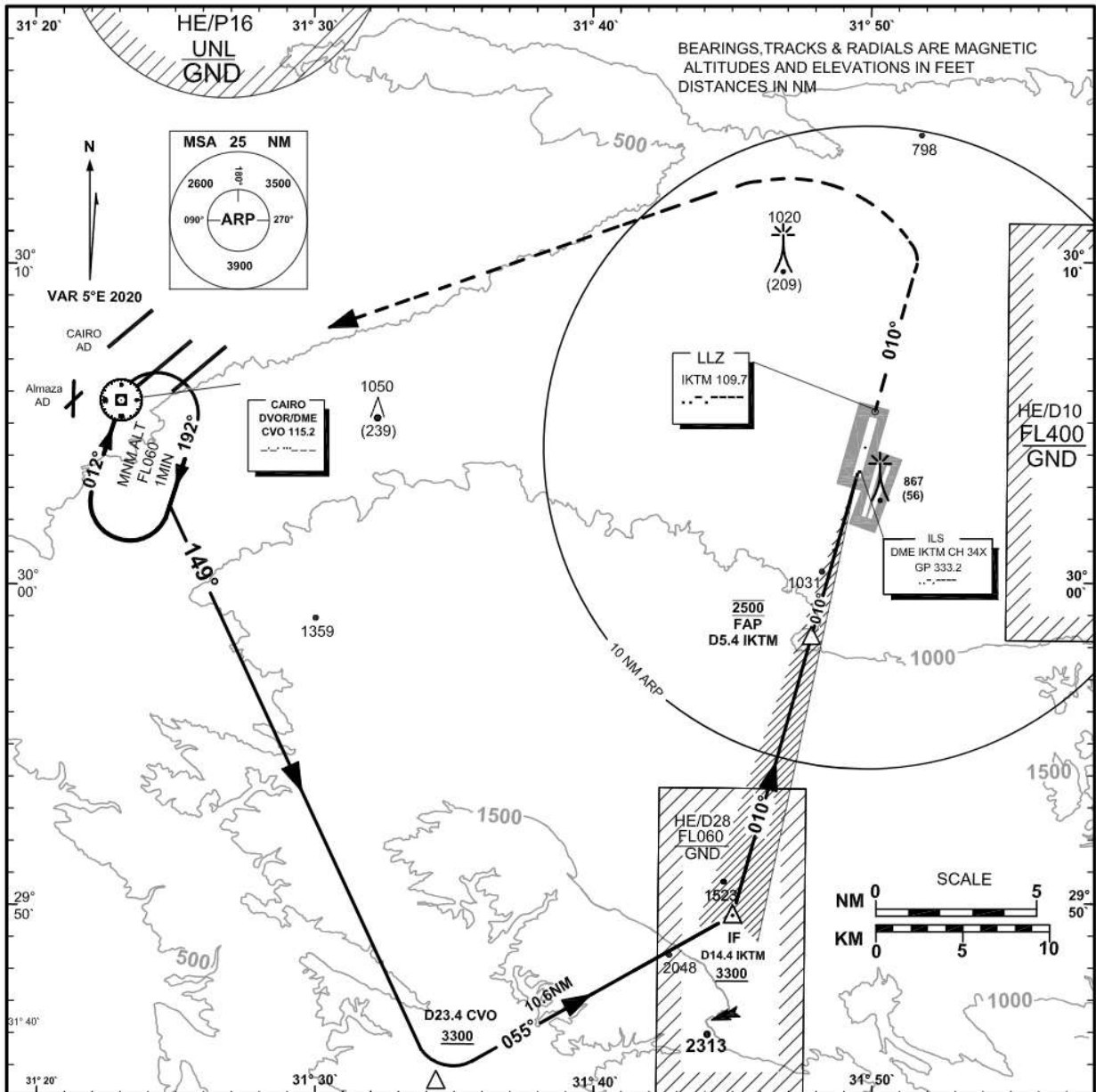
HECP/CCE

**INSTRUMENT APPROACH
CHART-ICAO**

AD ELEV 833FT
HEIGHTS RELATED
TO THR RWY 01L
ELEV 811FT

TWR	118.9 & 118.350
EMERG	121.5
GND	121.925

**Cairo / Capital
ILS or LOC
RWY 01L**





CAPITAL (HECP)

ILS or LOC RWY 01L

AERONAUTICAL DATA TABULATION

ILS APCH to RWY 01L from CVO DVOR/DME	
Fix/point	Coordinates
CVO DVOR/DME (IAF)	30 05 32.3N 031 23 18.3E
D 23.4NM CVO – RDL 149(IAF)	29 44 25.4N 031 34 53.1E
10.6 NM FM IAF D23.4 FIX TR 055° (IAF)	29 49 41.8N 031 45 25.4E
D14.4NM IKTM -(IF)	29 49 41.8N 031 45 25.4E
D5.4NM IKTM -(FAP)	29 58 24.3N 031 48 08.3E
(MAPt) THR RWY 01L TR 010°/0.2NM IKTM	30 03 23.30N 031 49 41.76E
THR RWY 01L	30 03 23.30N 031 49 41.76E
IKTM (GP/DME)	30 03 34.5N 031 49 48.8E
IKTM (LLZ)	30 05 27.5N 031 50 20.6E



For Simulation Use Only
Not For Real Life

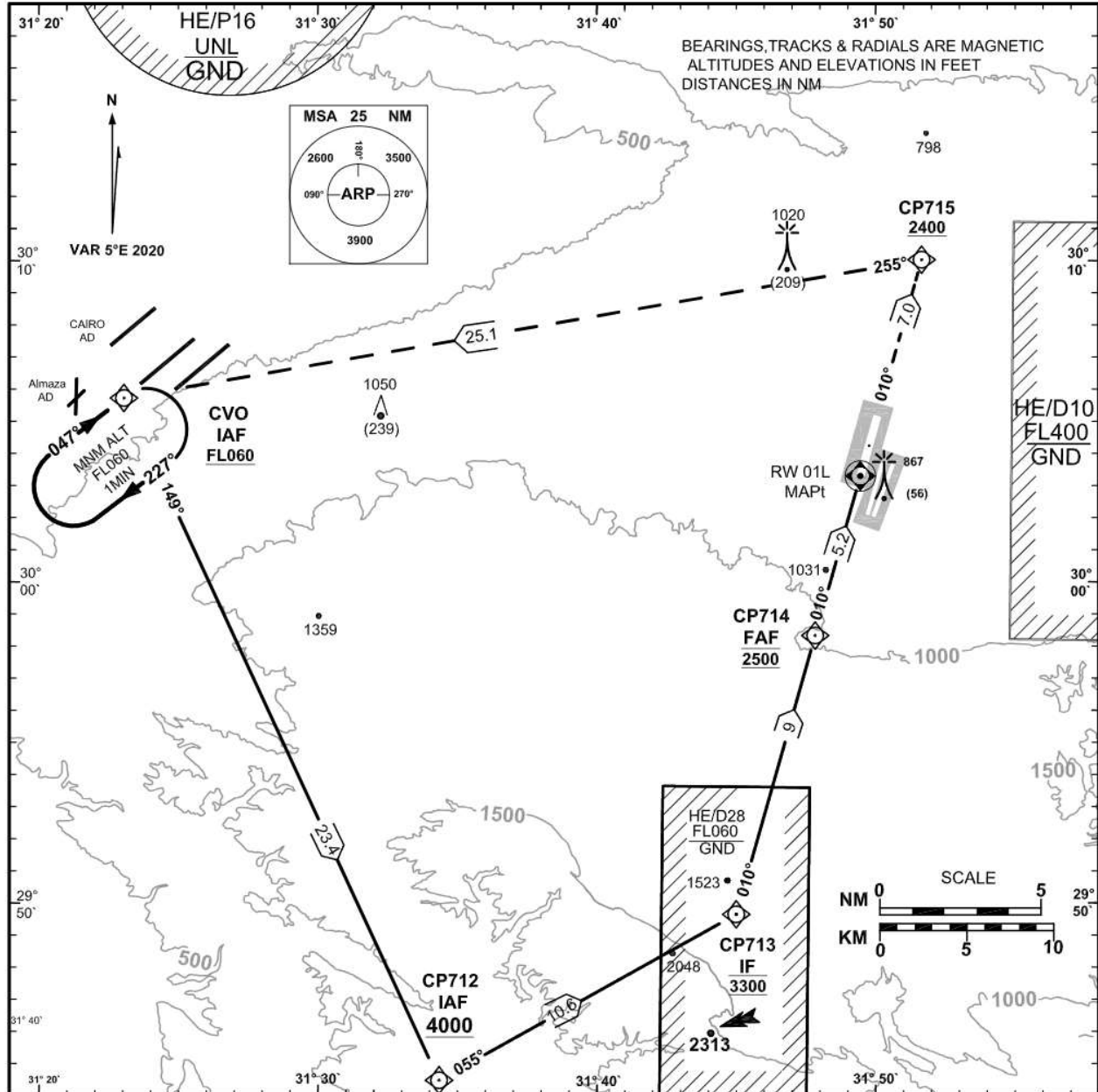
HECP/CCE

**INSTRUMENT APPROACH
CHART- ICAO**

AD ELEV 833FT
HEIGHTS RELATED TO
THR RWY 01L ELEV 811FT

TWR	118.9 & 118.350
EMERG	121.5
GND	121.925

**Cairo / Capital
RNP RWY 01L**



TRANS LEVEL FL 060	TRANS ALT 4500	<p>Missed APCH. Climb direct to CP715 at 2400FT or above, then turn left climbing to CVO at FL060 and hold or as directed by ATC.</p>																
CP713 IF 3300 (2489)	CP714 FAF 2500 (1689)																	
<p>THR ELEV 811</p> <p>THR RWY 01L 15 14 13 12 11 10 9 8 7 6 5.2 4 3 2 1 0 1 2 3 4 NM THR</p>		<p>RW01L MAPt</p>																
OCA(OCH)	A B C D	<table border="1"> <tr> <td>GND speed</td> <td>KTs</td> <td>70</td> <td>90</td> <td>100</td> <td>120</td> <td>140</td> <td>160</td> </tr> <tr> <td>Rate of descent FAF - MAPt 5.2%</td> <td>ft/m</td> <td>372</td> <td>478</td> <td>531</td> <td>637</td> <td>743</td> <td>850</td> </tr> </table>	GND speed	KTs	70	90	100	120	140	160	Rate of descent FAF - MAPt 5.2%	ft/m	372	478	531	637	743	850
GND speed	KTs	70	90	100	120	140	160											
Rate of descent FAF - MAPt 5.2%	ft/m	372	478	531	637	743	850											
LNAV	1360 (549)																	



Instrument Approach CHART-ICAO	AD ELEV 833 FT HEIGHTS RELATED TO THR RWY 01L ELEV 811FT	TWR 118.9 &118.350 EMERG 121.5 GND 121.925	Cairo / Capital RNP RWY 01L
-----------------------------------	---	---	--

TABULAR DESCRIPTION

Serial Number	Path Descriptor	Waypoint Identifier	Fly-Over	Course °M(°T)	Magnetic Variation	Distance (NM)	Turn Direction	Altitude (FT)	Speed (Kts)	VPA°/TCH (FT)	Navigation Specification
010	IF	CVO	-	-	-	-	-	+FL060	-	-	RNP APCH
020	TF	CP712	-	149(154)	-	23.4	L	+4000	-	-	RNP APCH
030	TF	CP713	-	055(060)	-	10.6	L	@3300	-	-	RNP APCH
040	TF	CP714	-	010(015)	-	9.0	-	@2500	-	-	RNP APCH
050	TF	RW01L	Y	010(015)	-5	5.2	-	-	-	-3.0/50	RNP APCH
060	TF	CP715	-	010(015)	-	7.0	-	+2400	-	-	RNP APCH
070	TF	CVO	-	255(260)	-	25.1	L	+FL060	-	-	RNP APCH
080	HM	CVO	-	047(052)	-	1MIN	R	+FL060	-	-	RNP APCH

Waypoint Coordinates

Waypoint Identifier	Coordinates
CVO	30° 05' 32.3"N 031° 23' 18.3"E
CP712	29° 44' 25.4"N 031° 34' 53.1"E
CP713	29° 49' 41.8"N 031° 45' 25.4"E
CP714	29° 58' 24.3"N 031° 48' 08.3"E
RW01L	30° 03' 23.30"N 031° 49' 41.76"E
CP715	30° 10' 08.5"N 031° 51' 48.6"E