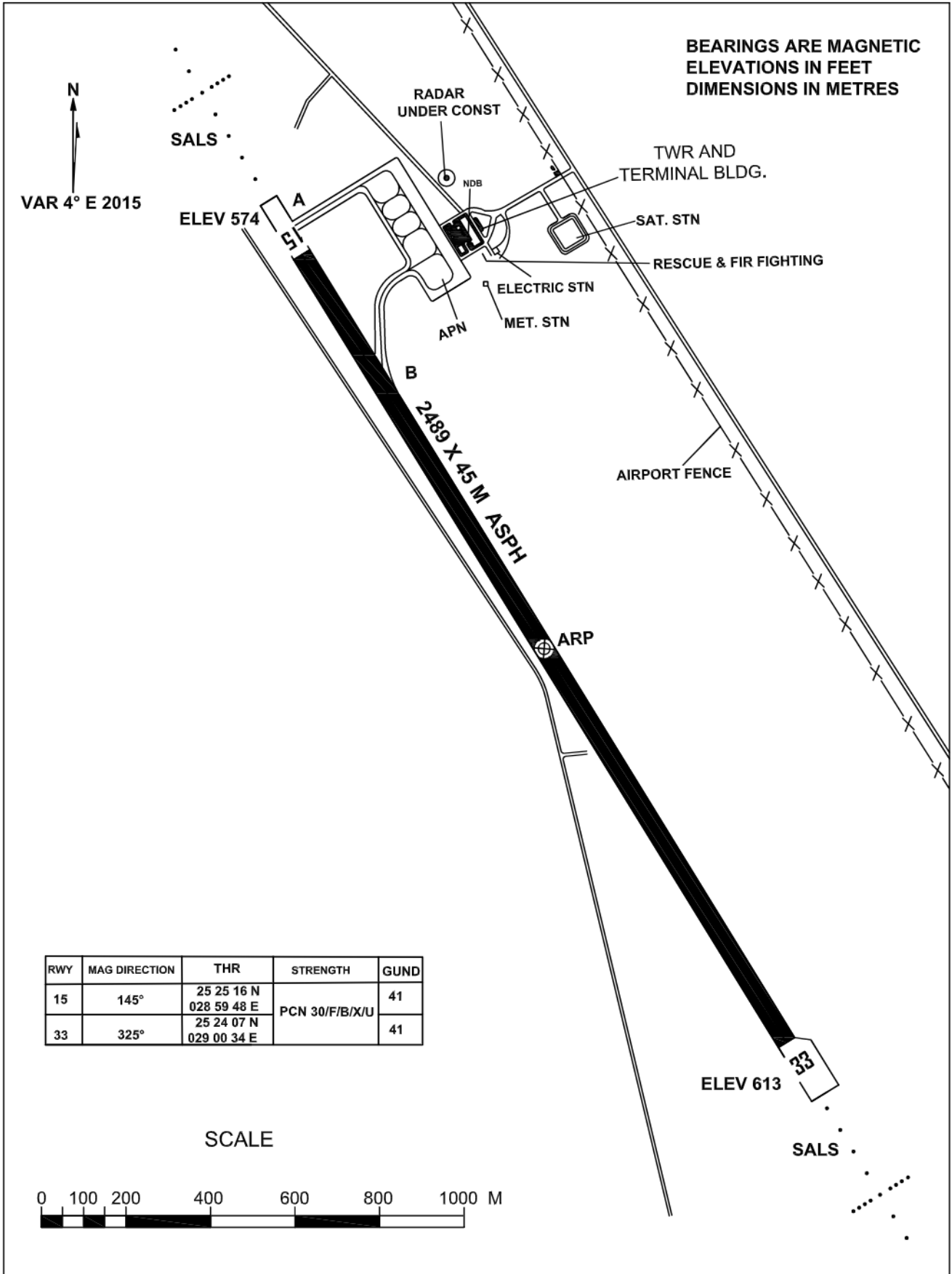




For Simulation Use Only
Not For Real life

HEDK/DAK

AERODROME CHART-ICAO 25 24 42 N 029 00 11 E ELEV 613 FT TWR 118.3 EMERG 121.5 **DAKHLA / DAKHLA**

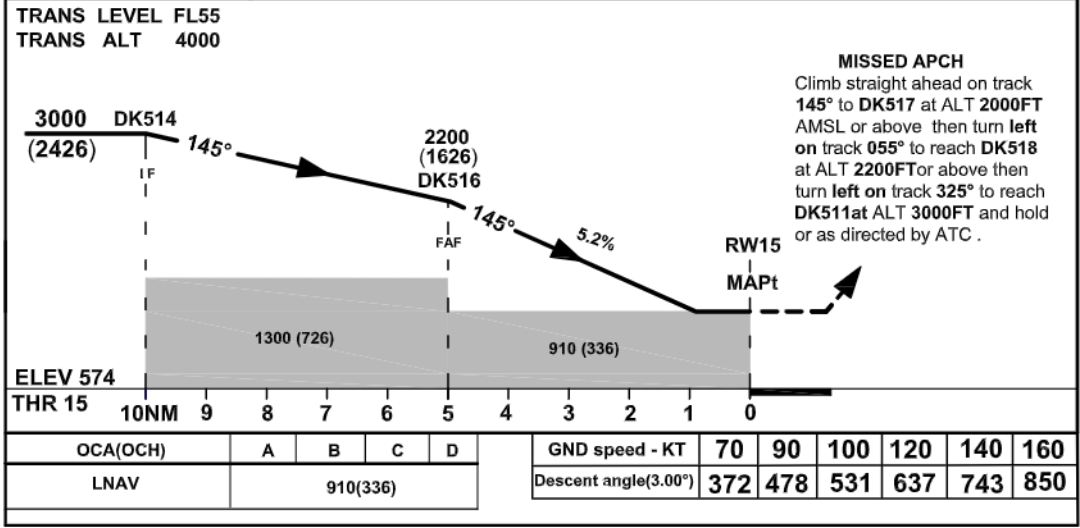
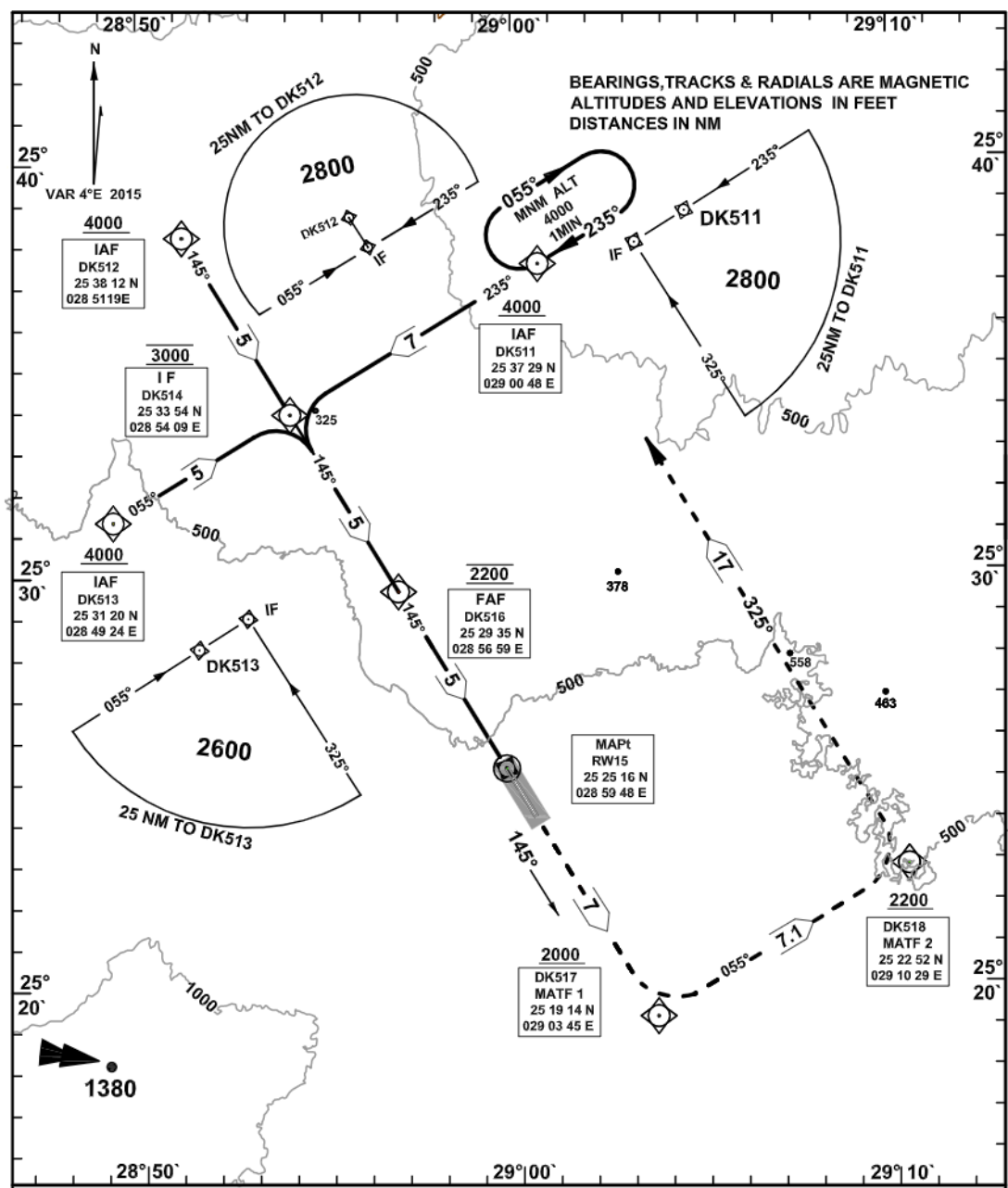




For Simulation Use Only
Not For Real life

HEDK/DAK

INSTRUMENT APPROACH CHART- ICAO **AD ELEV 613FT HEIGHTS RELATED TO THR RWY15 ELEV 574FT** **TWR 118.3 EMERG 121.5** **DAKHLA /DAKHLA RNP RWY 15**





For Simulation Use Only
Not For Real life

HEDK/DAK

Instrument Approach AD ELEV 613ft
CHART-ICAO HEIGHTS RELATED
TO THR RWY 15
ELEV 574FT

TWR/APP	118.3
EMERG	121.5

DAKHLA/ **DAKHLA**
RNP RWY 15

TABULAR DESCRIPTION

Serial Number	Path Descriptor	Waypoint Identifier	Fly-Over	Course °M(°T)	Magnetic Variation	Distance (NM)	Turn Direction	Altitude(ft)	Speed (Kts)	VPA/TCH	Navigation Specification
001	IF	DK511			-4	-		+4000	-230	-	RNP APCH
002	TF	DK514		235°(239.3°)	-4	7.0	L	@3000		-	RNP APCH
003	IF	DK512		-	-4	-		+4000		-	RNP APCH
004	TF	DK514		145(149.2°)	-4	5.0		@3000		-	RNP APCH
005	IF	DK513		-	-4	-		+4000		-	RNP APCH
006	TF	DK514		055(059.2°)	-4	5.0	R	@3000		-	RNP APCH
007	TF	DK516		145(149.2°)	-4	5.0		@2200			RNP APCH
008	TF	RW15	Y	145(149.3°)	-4	5.0		-		-3.0/50	RNP APCH
009	TF	DK517		145(149.3°)	-4	7.0		+2000		-	RNP APCH
010	TF	DK518		055(059.3°)	-4	7.1	L	+2200		-	RNP APCH
011	TF	DK511		325(329.1°)	-4	17.0	L	@3000		-	RNP APCH
012	HM	DK511		235(239.3°)	-4	1 MIN	R	+4000		-	RNP APCH

WAYPOINT LIST

Waypoint Identifier	Coordinates
DK 511	25 37 28.9 N 029 00 48.4 E
DK 512	25 38 12.2 N 028 51 19.3 E
DK 513	25 31 19.7 N 028 49 24.1 E
DK 514	25 33 53.7 N 028 54 09.1 E
DK 516	25 29 35.1 N 028 56 58.7 E
RW 15	25 25 16.4 N 028 59 48.1 E
DK 517	25 19 14.3 N 029 03 44.9 E
DK 518	25 22 51.9 N 029 10 28.7 E



For Simulation Use Only
Not For Real life

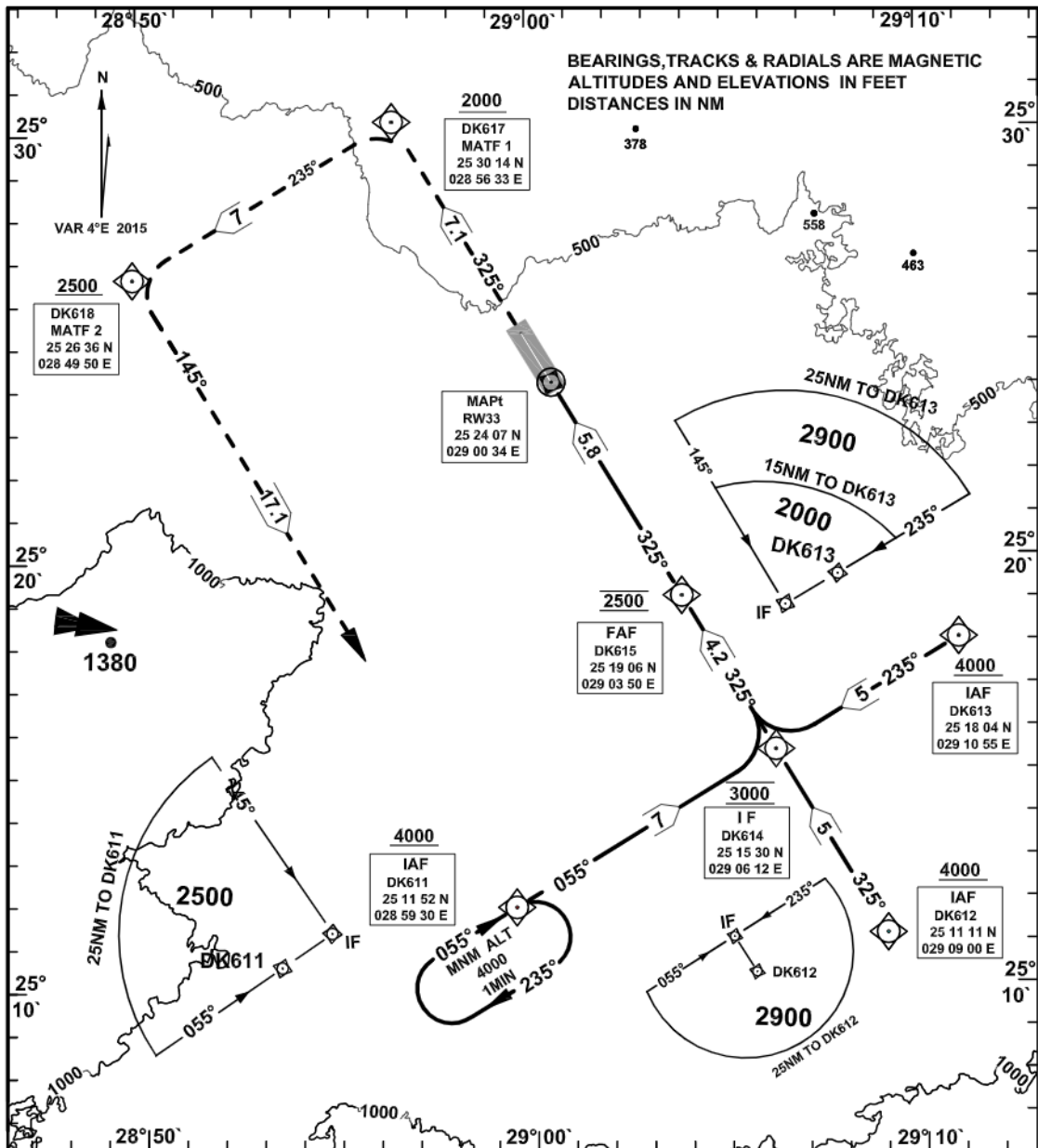
HEDK/DAK

**INSTRUMENT APPROACH
CHART- ICAO**

**AERODROME ELEV 613
HEIGHTS RELATED TO
AD ELEVATION**

TWR	118.3
EMERG	121.5

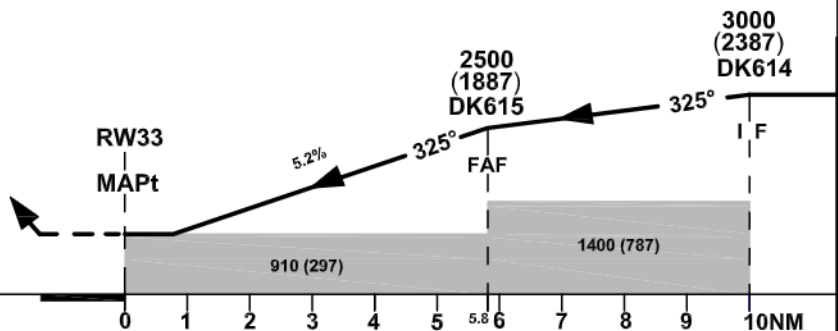
**DAKHLA /DAKHLA
RNP RWY 33**



**TRANS LEVEL FL55
TRANS ALT 4000**

MISSED APCH
Climb straight ahead on track 325° to DK617 at ALT 2000FT AMSL or above then turn left on track 235° to reach DK618 at ALT 2500 FT or above then turn left on track 145° to reach DK611 at ALT 3000FT and hold or as directed by ATC .

**ELEV 613
THR 33**



OCA(OCH)	A	B	C	D
LNAV	910 (297)			

GND speed - KT	70	90	100	120	140	160
Descent angle(3.00°)	372	478	531	637	743	850



For Simulation Use Only
Not For Real life

HEDK/DAK

Instrument Approach AD ELEV 613ft
CHART-ICAO HEIGHTS RELATED
TO AD ELEV

TWR/APP	118.3
EMERG	121.5

DAKHLA/ **DAKHLA**
RNP RWY 33

TABULAR DESCRIPTION

Serial Number	Path Descriptor	Waypoint Identifier	Fly-Over	Course °M(°T)	Magnetic Variation	Distance (NM)	Turn Direction	Altitude(ft)	Speed (Kts)	VPA/TCH	Navigation Specification
001	IF	DK611			-4	-		+4000	-230	-	RNP APCH
002	TF	DK614		055°(059.3)	-4	7.0	L	@3000		-	RNP APCH
003	IF	DK612			-4	-		+4000		-	RNP APCH
004	TF	DK614		325°(329.3)	-4	5.0		@3000		-	RNP APCH
005	IF	DK613			-4	-		+4000		-	RNP APCH
006	TF	DK614		235°(239.1)	-4	5.0	R	@3000		-	RNP APCH
007	TF	DK615		325°(329.3)	-4	4.2		@2500			RNP APCH
008	TF	RW33	Y	325°(329.3)	-4	5.8		-		-3.0/ 50	RNP APCH
009	TF	DK617		325°(329.3)	-4	7.1		+2000		-	RNP APCH
010	TF	DK618		235°(239.3)	-4	7.0	L	+2500		-	RNP APCH
011	TF	DK 611		145°(149.2)	-4	17.1	L	@3000		-	RNP APCH
012	HM	DK 611		055°(059.3)	-4	1 MIN	R	+4000		-	RNP APCH

WAYPOINT LIST

Waypoint Identifier	Coordinates
DK 611	25 11 52.1 N 028 59 29.6 E
DK 612	25 11 10.7 N 029 09 00.4 E
DK 613	25 18 04.0 N 029 10 55.4 E
DK 614	25 15 29.5 N 029 06 11.7 E
DK 615	25 19 06.3 N 029 03 50.1 E
RW 33	25 24 06.9N 029 00 33.6 E
DK 617	25 30 14.1 N 028 56 33.1E
DK 618	25 26 36.4 N 028 49 50.2 E



For Simulation Use Only
Not For Real life

HEDK/DAK

INSTRUMENT APPROACH CHART-ICAO	AERODROME ELEV 613 HEIGHTS RELATED TO AD ELEVATION	TWR 118.3 EMERG 121.5	DAKHLA / DAKHLA NDB RWY 33 CAT A&B
--------------------------------------	--	--------------------------	---

