

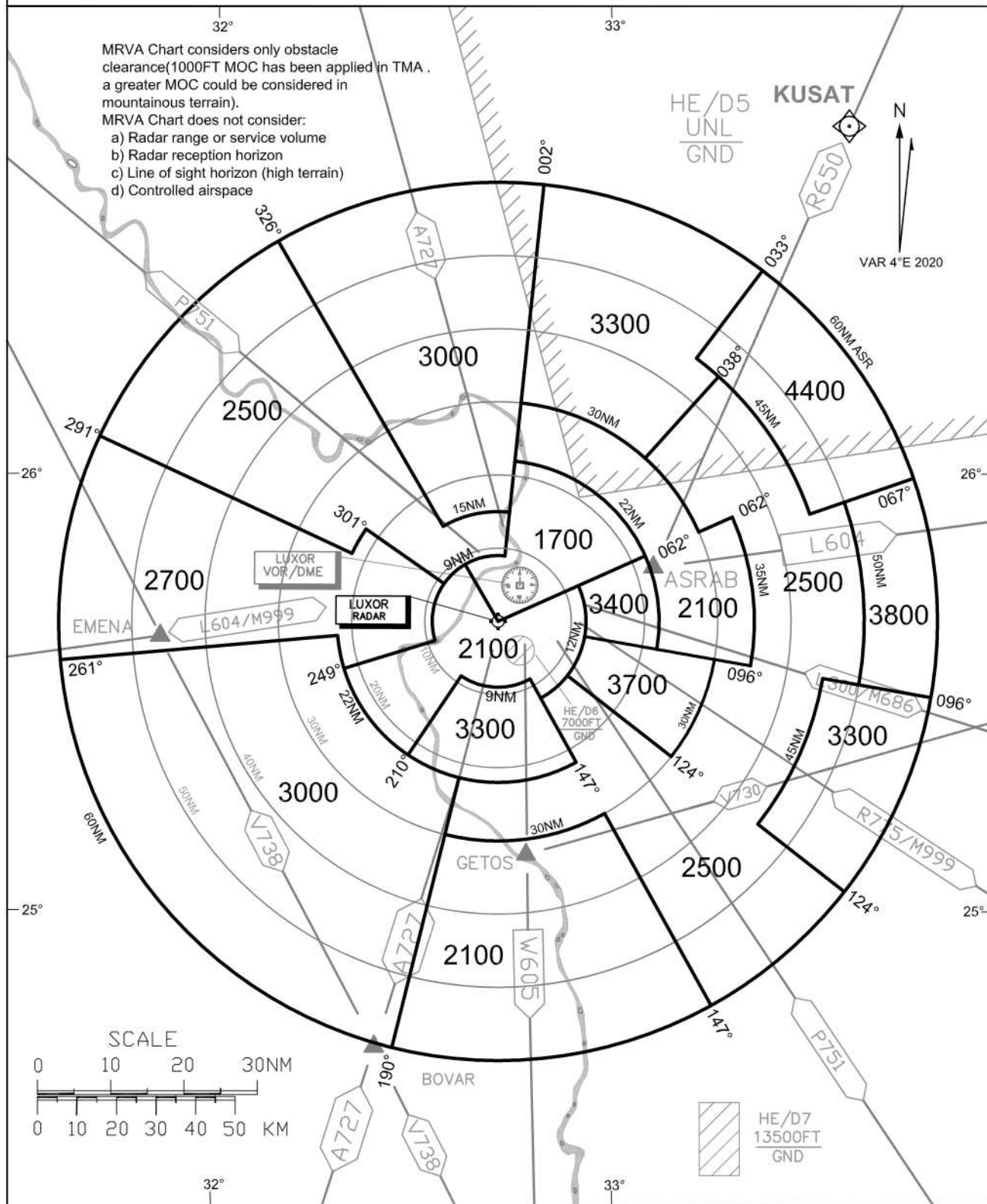


# LUXOR MINIMUM RADAR VECTORING ALTITUDE CHART

MRVA Chart considers only obstacle clearance(1000FT MOC has been applied in TMA . a greater MOC could be considered in mountainous terrain).

MRVA Chart does not consider:

- a) Radar range or service volume
- b) Radar reception horizon
- c) Line of sight horizon (high terrain)
- d) Controlled airspace





For Simulation Use Only  
Not For Real life

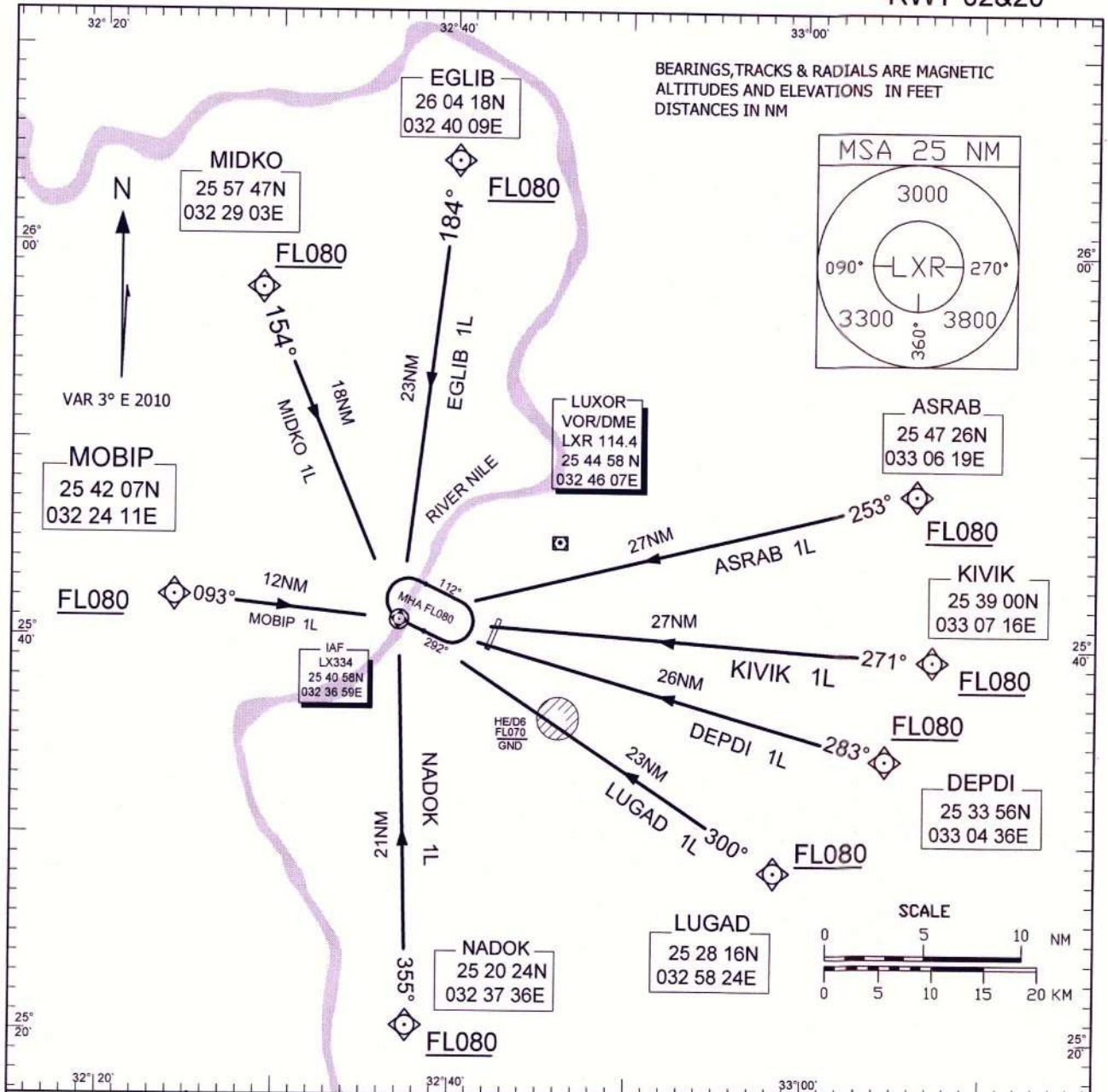
HELX/LXR

STANDARD ARRIVAL CHART -  
INSTRUMENT (STAR) - ICAO

TRANSITION ALTITUDE  
4500FT

TWR&APP 119.9,118.1  
RADAR APP 124.3,118.8  
GND 121.9  
ATIS 122.6

LUXOR / LUXOR  
RNAV (VOR/DME or GNSS)  
RWY 02&20



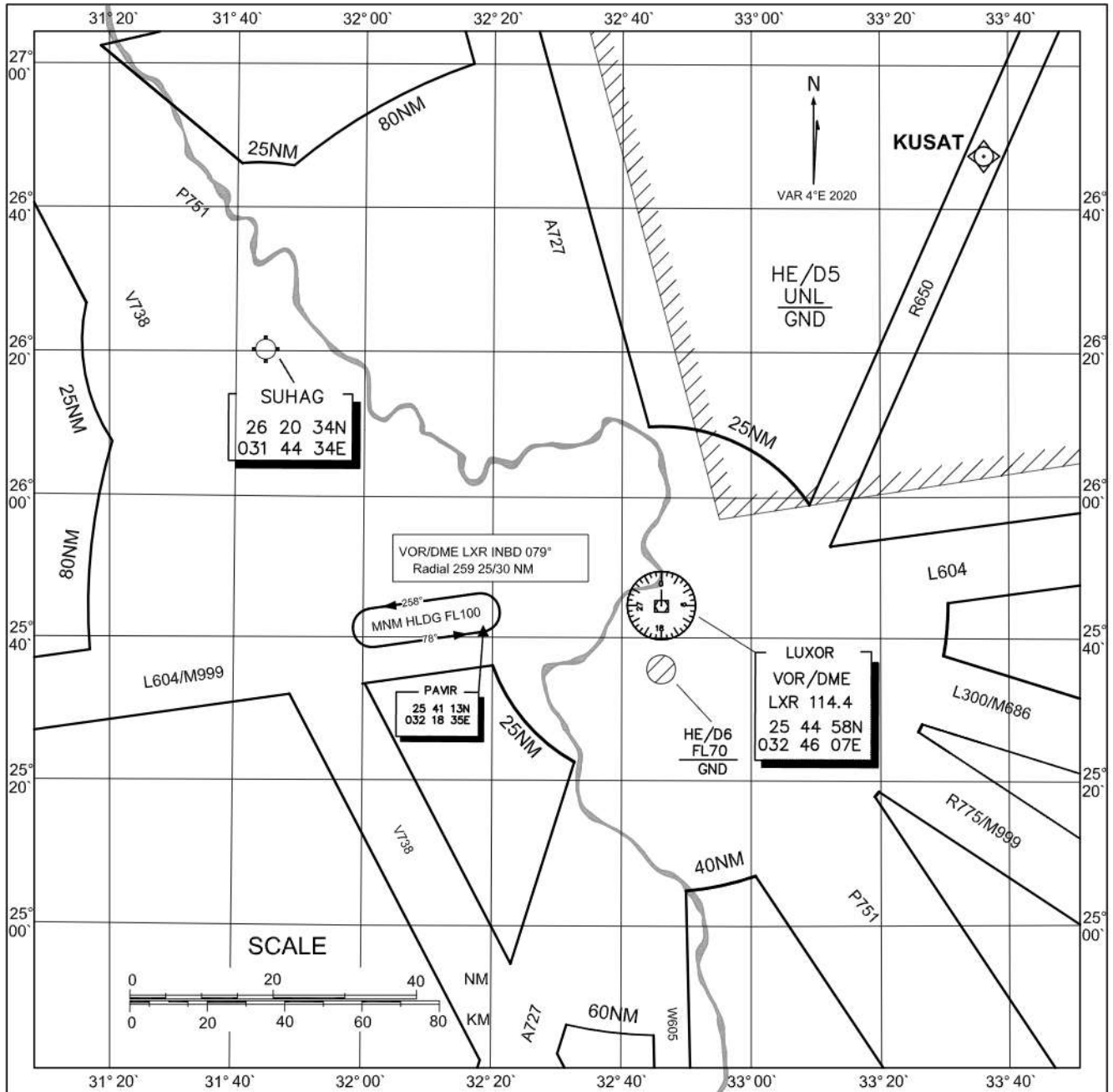
STAR	AWY	ROUTING
ASRAB 1L	L604/UL604	ASRAB(FL080+),LX334(FL080,190KT).
KIVIK 1L	L300/M686	KIVIK(FL080+),LX334(FL080,190KT).
DEPDI 1L	R775&M999/UM999	DEPDI(FL080+),LX334(FL080,190KT).
LUGAD 1L	P751/UP751	LUGAD(FL080+),LX334(FL080,190KT).
NADOK 1L	W605	NADOK(FL080+),LX334(FL080,190KT).
MOBIP 1L	L604/UL604&M999/UM999	MOBIP(FL080+),LX334(FL080,190KT).
MIDKO 1L	P751/UP751	MIDKO(FL080+),LX334(FL080,190KT).
EGLIB 1L	A727	EGLIB(FL080+),LX334(FL080,190KT).



For Simulation Use Only  
Not For Real life

HELX/LXR

## LUXOR APPROACH OUTER FIXES HOLDING PROCEDURES



### OUTER FIXES HOLDING

Vectors to these points will be provided by ATC  
When excessive holdings are expected.





For Simulation Use Only  
Not For Real life

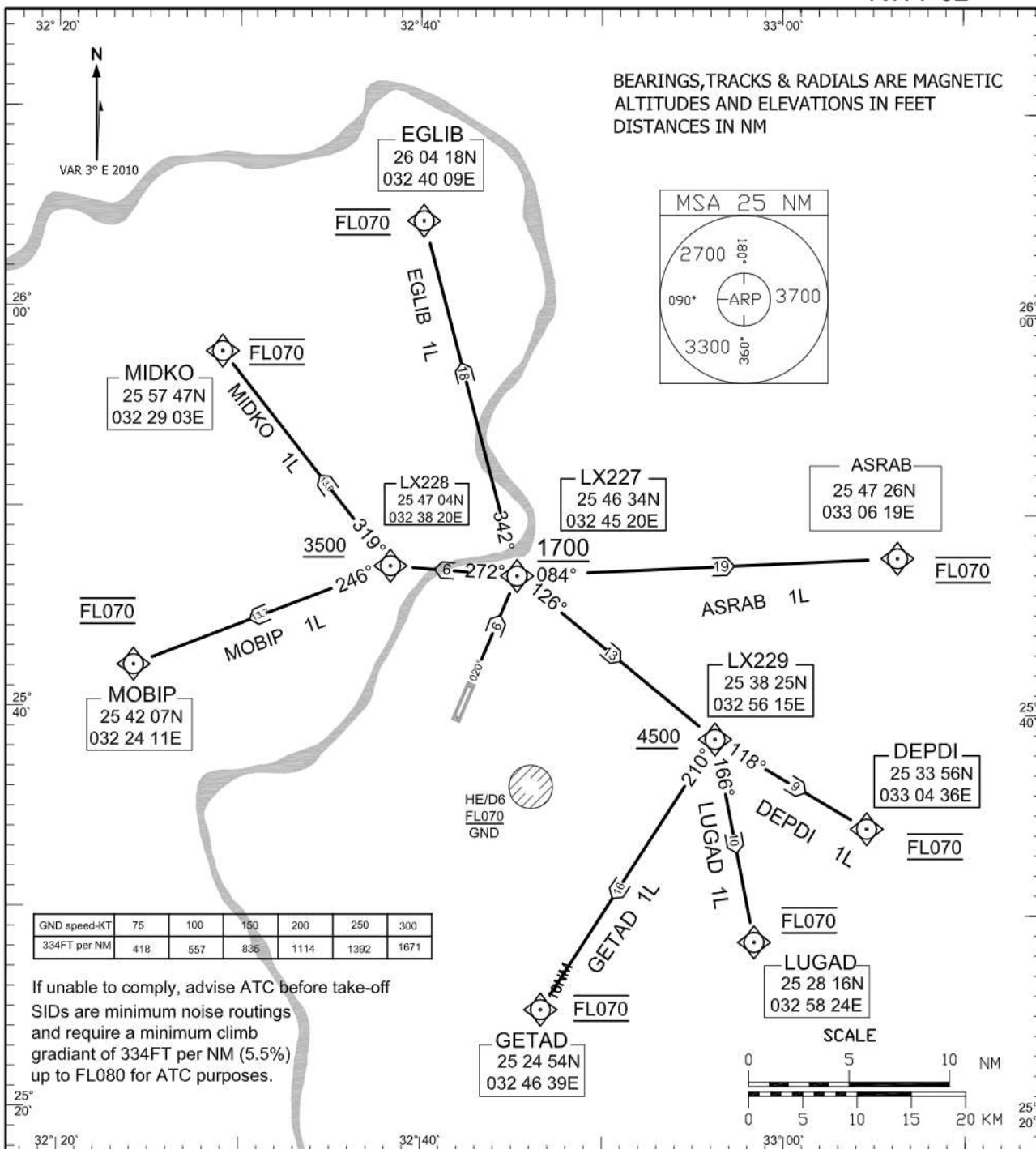
HELX/LXR

STANDARD DEPARTURE CHART -  
INSTRUMENT (SID) - ICAO

TRANSITION ALTITUDE  
4500FT

TWR&APP 119.9,118.1  
RADAR APP 124.3,118.1  
GND 121.9  
ATIS 122.6

LUXOR / LUXOR  
RNAV (GNSS)  
RWY 02



**Initial Climb**

Climb straight ahead to LX227(1700FT+) then to

SID	AWY	ROUTING
GETAD 1L	W605	LX229(+4500FT),GETAD(FL070)
LUGAD 1L	P751/UP751	LX229(+4500FT),LUGAD(FL070)
DEPDI 1L	R775&M999/UM999	LX229(+4500FT),DEPDI(FL070)
MIDKO 1L	P751/UP751	LX228(+3500FT),MIDKO(FL070)
MOBIP 1L	L604/UL604&M999/UM999	LX228(+3500FT),MOBIP(FL070)
EGLIB 1L	A727	EGLIB(FL070)
ASRAB 1L	L604/UL604	ASRAB(FL070)



For Simulation Use Only  
Not For Real life

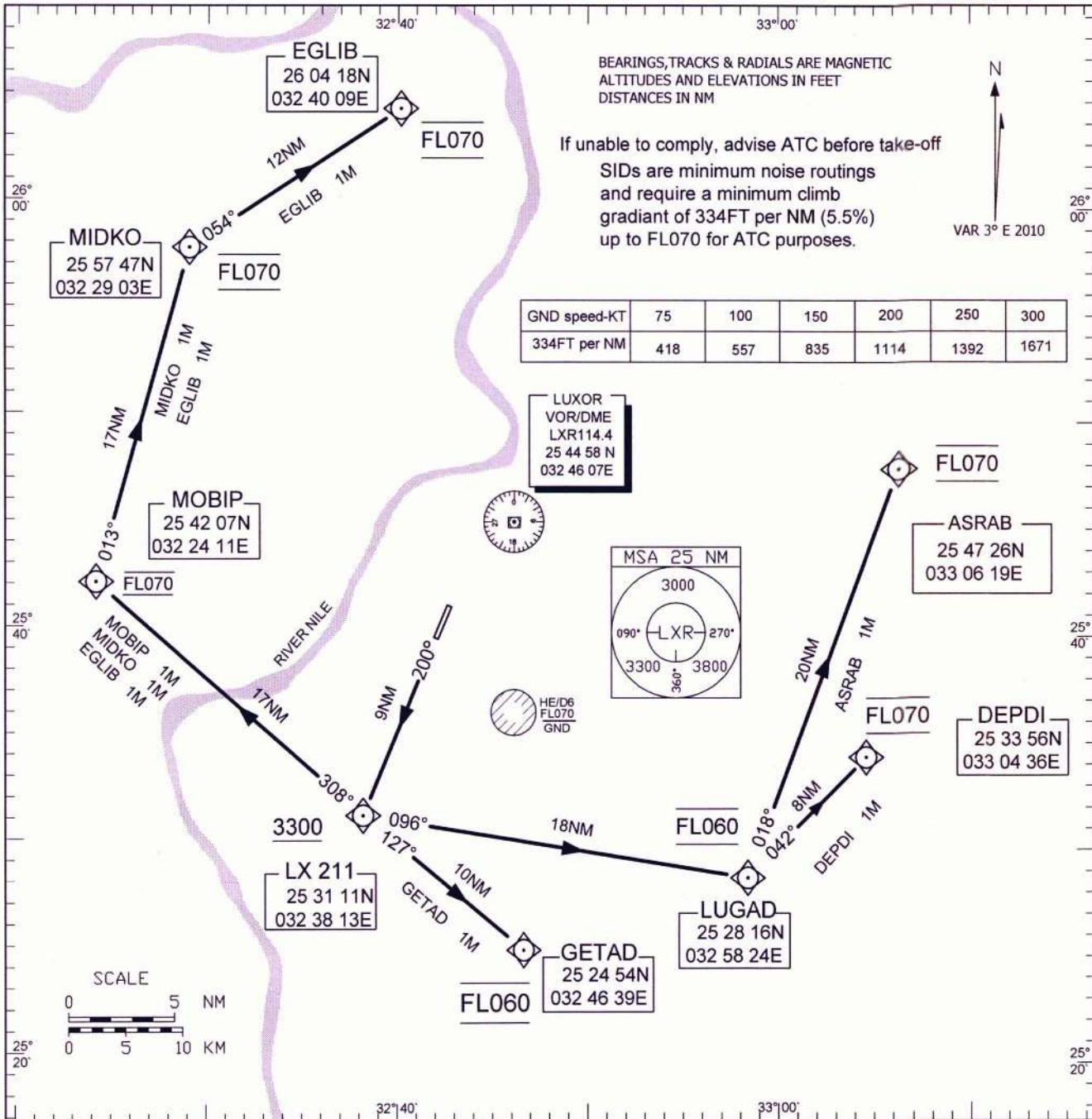
HELX/LXR

STANDARD DEPARTURE CHART -  
INSTRUMENT (SID) - ICAO

TRANSITION ALTITUDE  
4500FT

TWR&APP 119.9, 118.1  
RADAR APP 124.3, 118.1  
GND 121.9  
ATIS 122.6

LUXOR / LUXOR  
RNAV (VOR/DME or GNSS)  
RWY 20



**Initial Climb**

Climb straight ahead to cross LX211 (3300FT+), then to:

SID	AWY	ROUTING
GETAD 1M	W605	- GETAD(FL060).
LUGAD 1M	P751/UP751	- LUGAD(FL060).
DEPDI 1M	R775&M999/UM999	- LUGAD(FL060), DEPDI(FL070).
ASRAB 1M	L604/UL604	- LUGAD(FL060), ASRAB(FL070).
MOBIP 1M	L604/UL604&M999/UM999	- MOBIP(FL070).
MIDKO 1M	P751/UP751	- MOBIP(FL070), MIDKO(FL070).
EGLIB 1M	A727	- MOBIP (FL070), MIDKO(FL070), EGLIB(FL070).





For Simulation Use Only  
Not For Real life

HELX/LXR

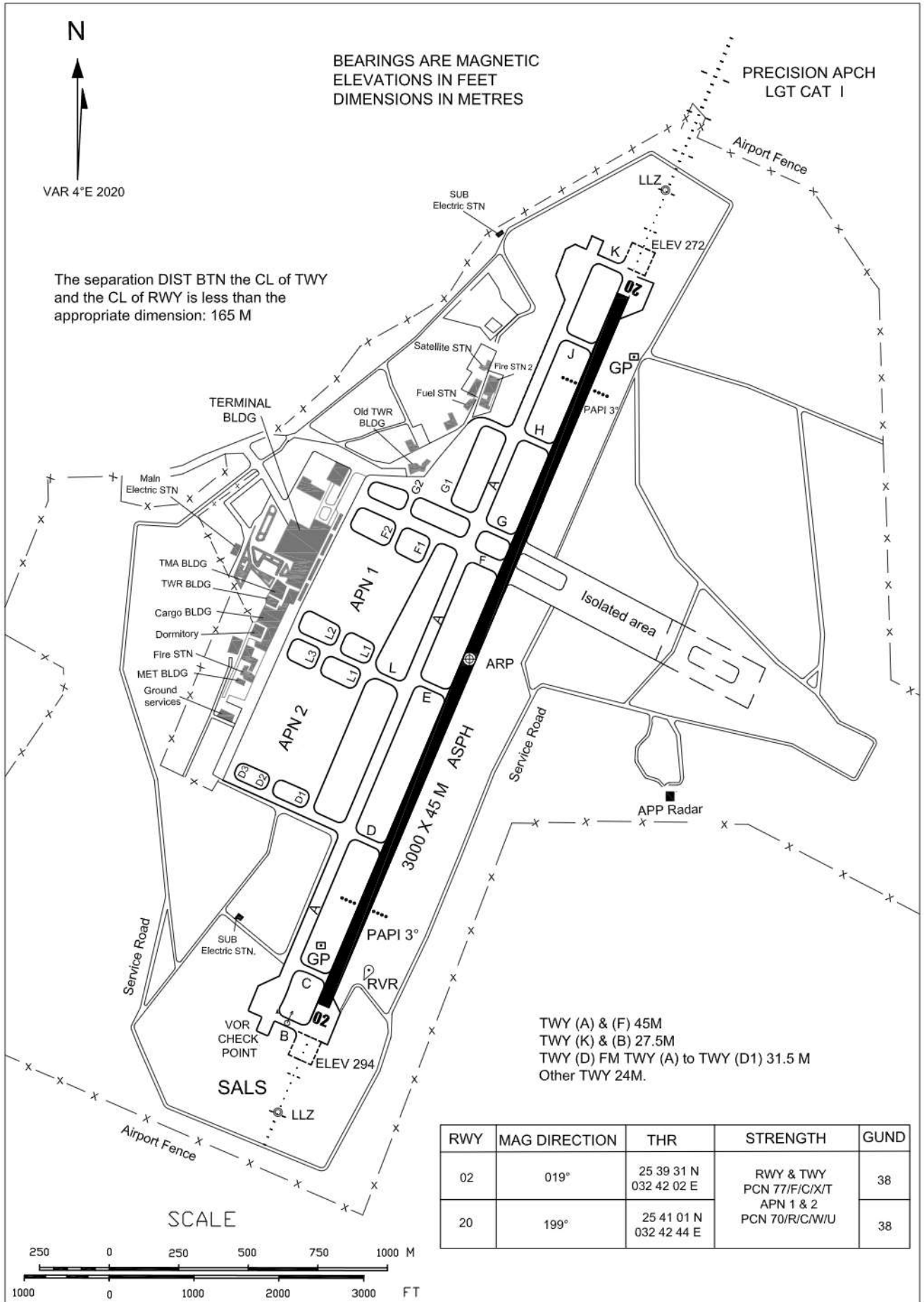
**AERODROME CHART - ICAO**

25° 40' 15" N  
032° 42' 23" E

ELEV 294FT

TWR 119.9  
EMERG 121.5  
GND 121.9

LUXOR/LUXOR





For Simulation Use Only  
Not For Real life

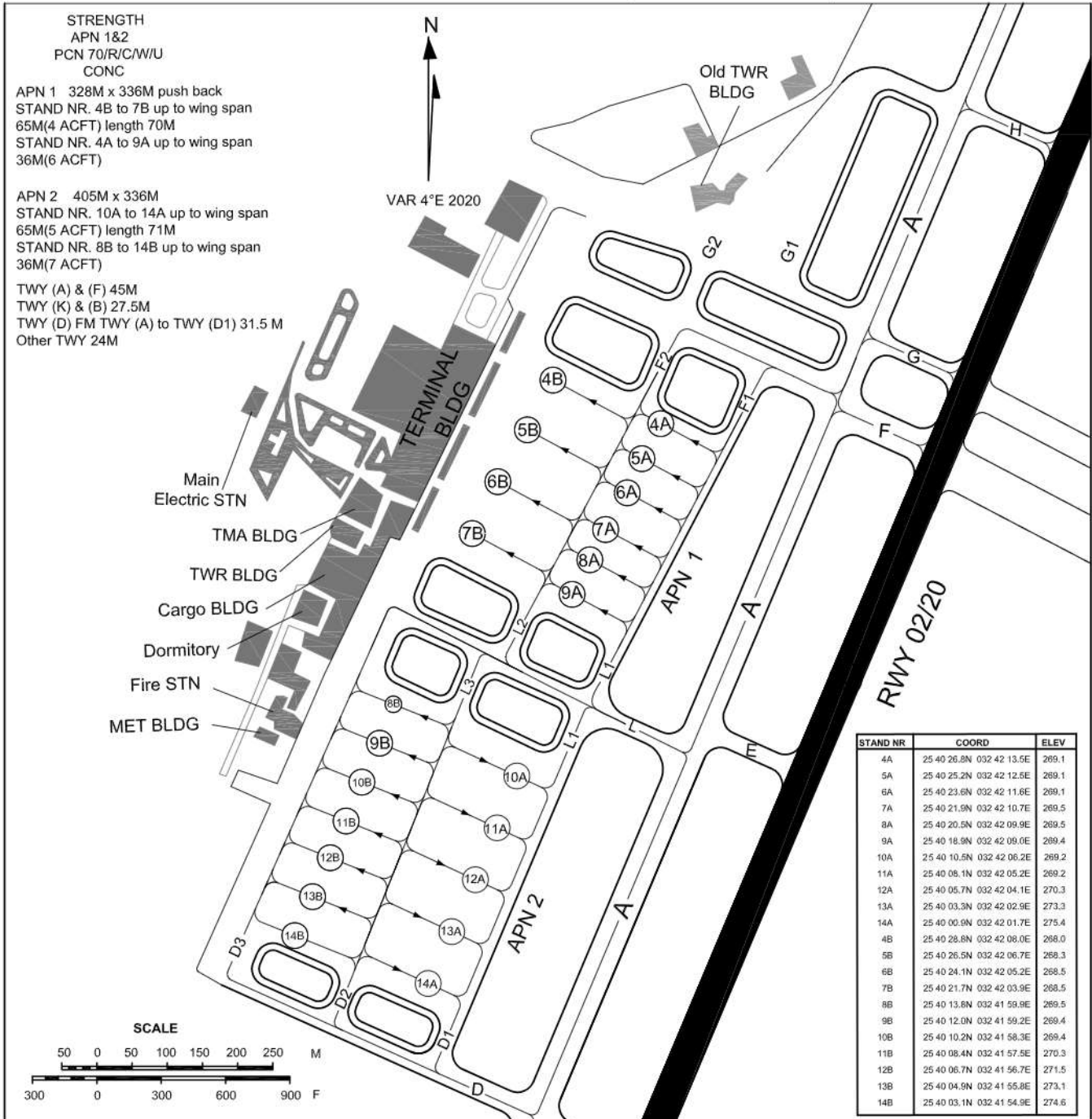
HELX/LXR

**AIRCRAFT PARKING / DOCKING CHART - ICAO.**

APN ELEV. 275FT

TWR. 119.9  
GND. 121.9  
EMERG. 121.5

LUXOR / **LUXOR**





For Simulation Use Only  
Not For Real life

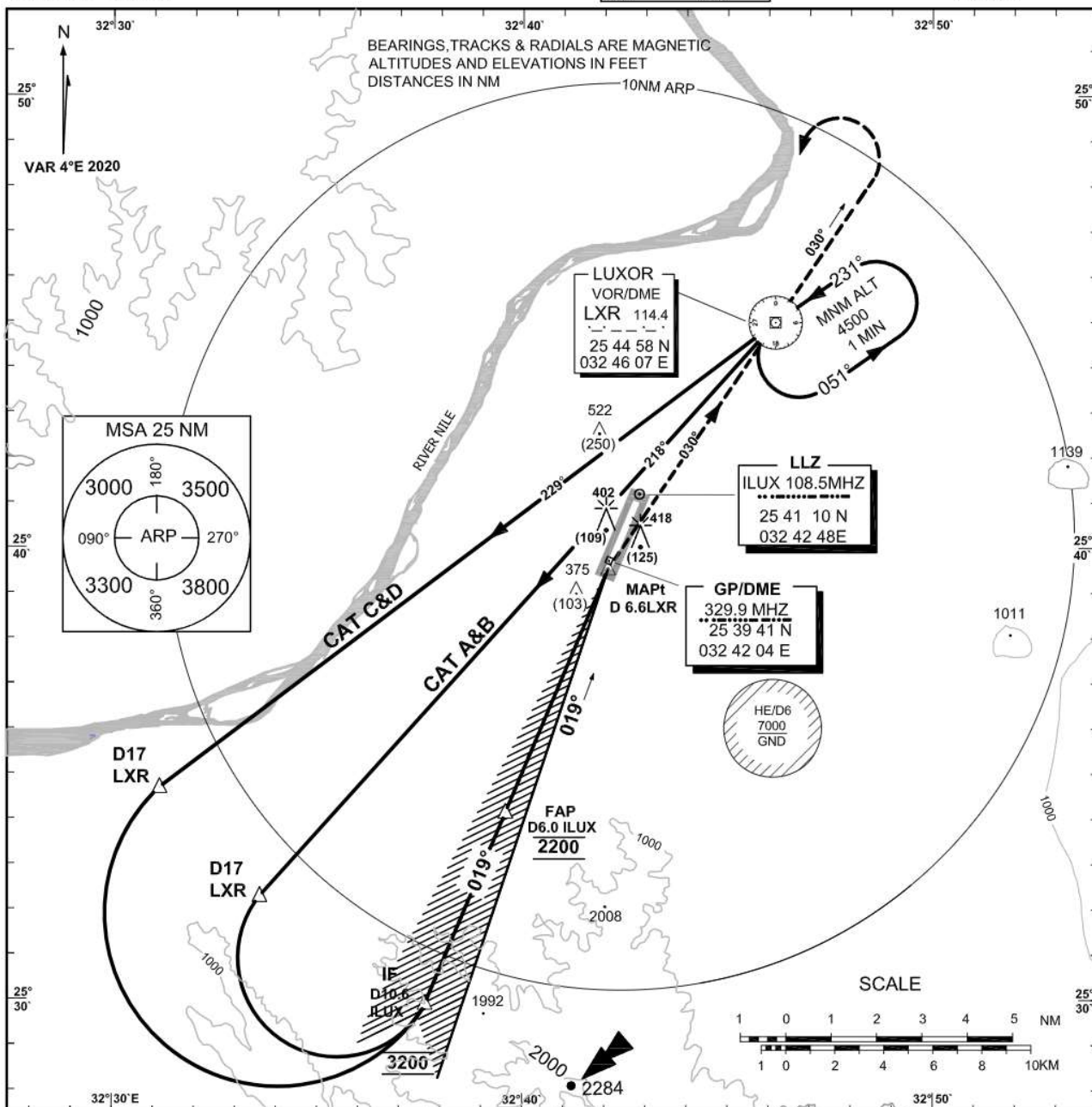
HELX/LXR

INSTRUMENT  
APPROACH  
CHART-ICAO

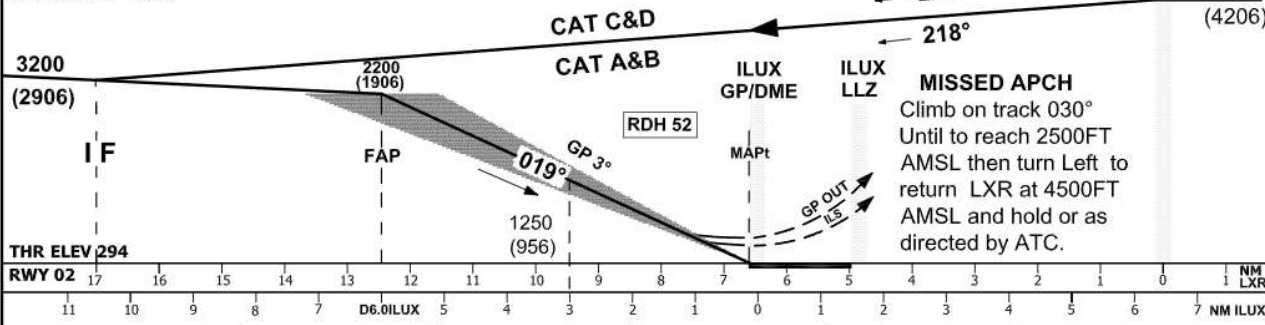
AD ELEV 294 FT  
HEIGHTS RELATED TO  
AD ELEV

TWR&APP	119.9, 118.1
RADAR APP	124.3, 118.1
EMERG	121.5
GND	121.9
ATIS	122.6

LUXOR / **LUXOR**  
ILS or LOC  
RWY 02



TRANS LEVEL FL060  
TRANS ALT 4500



OCA(OCH)	A	B	C	D	GP INOP
Straight in CAT I	504 (210)	516 (222)	524(230)	535 (241)	660 (366)





**LUXOR (HELX)**

ILS or LOC RWY 02

**AERONAUTICAL DATA TABULATION**

ILS APCH to RWY 02 from LXR VOR/DME	
Fix/point	Coordinates
LXR VOR/DME (IAF)	25 44 58N 032 46 07E
D17 LXR –TR229°/17NM LXR FOR ACFT (C&D)	25 34 39.8N 32 31 06.9E
D17 LXR –TR218°/17NM LXR FOR ACFT (A&B)	25 3215.7N 032 33 33.6E
D10.6ILUX– TR 019° /10.6NM ILUX(IF)	25 29 53.3N 032 37 35.6E
D6.0 ILUX –TR 019°/6NM ILUX (FAF)	25 34 07.2N 032 39 32.9E
(MAPt)THR RWY 02	25 39 30.79N 032 42 02.49E
THR RWY 02	25 39 30.79N 032 42 02.49E
ILUX (GP/DME)	25 39 41.5N 032 42 03.9E
ILUX (LLZ)	25 41 09.9N 032 42 48.1E



For Simulation Use Only  
Not For Real life

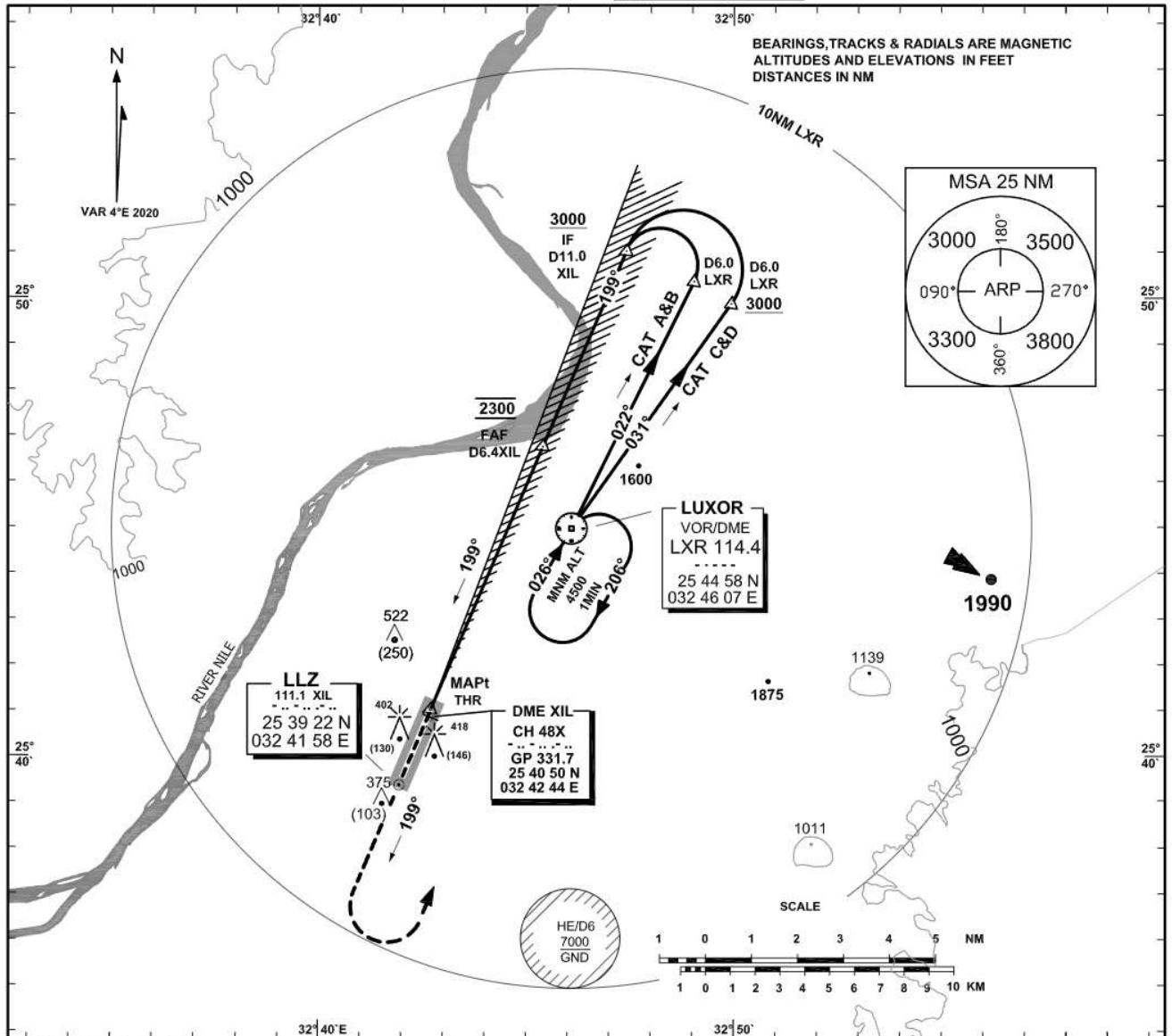
HELX/LXR

**INSTRUMENT  
APPROACH  
CHART-ICAO**

AD ELEV 294 FT  
HEIGHTS RELATED TO  
THR RWY 20 ELEV 272 FT

TWR&APP	119.9 ,118.1
RADAR APP	124.3 ,118.1
EMERG	121.5
GND	121.9
ATIS	122.6

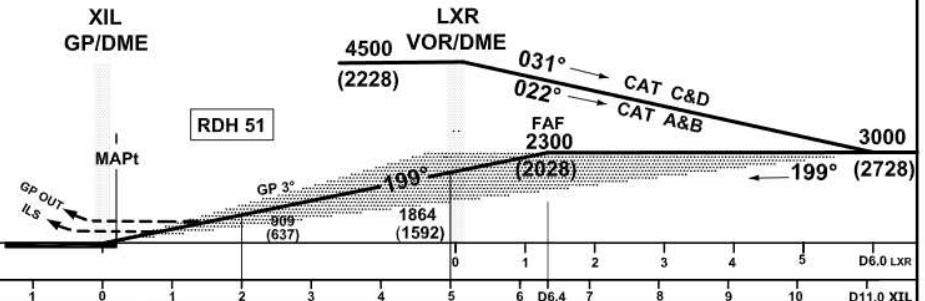
**LUXOR / LUXOR**  
ILS or LOC  
RWY 20



TRANS LEVEL FL 060  
TRANS ALT 4500

**MISSED APCH.**  
Climb straight ahead on track  
199° TO 2000 AMSL then  
execute left turn to return to  
LXR at 4500 AMSL and hold  
or as directed by ATC.

THR ELEV 272  
THR RWY 20



CAT OF ACFT	A	B	C	D	GP inoperative
Straight in CAT 1	472(200)	484(212)	492(220)	503(231)	640(368)





**LUXOR (HELX)**

ILS or LOC RWY 20

**AERONAUTICAL DATA TABULATION**

ILS APCH to RWY 20 from VOR LXR	
Fix/point	Coordinates
VOR/DME (LXR) (IAF)	25 44 58 N 032 46 07E
D6.0 LXR – TR031° CAT C&D LXR	25 49 52.6N 032 49 57.8E
D6.0 LXR –TR 022°/CAT A&B LXR	25 50 21.8 N 032 49 03.9E
D11.0 XIL BRG 199° (IF)	25 51 01.5N 032 47 26.1E
D6.4 XIL BRG 199° (FAF)	25 46 45.2N 032 45 25.7E
(MAPt) IS THR RWY	25 41 00.68N 032 42 44.08E
THR RWY 20	25 41 00.68N 032 42 44.08E
XIL (GP/DME)	25 40 50.4N 032 42 44.1E
XIL (LLZ)	25 39 22.0N 032 41 58.4E



For Simulation Use Only  
Not For Real life

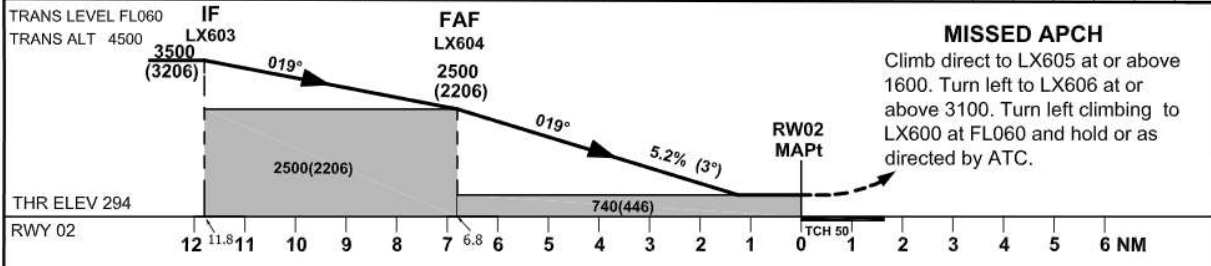
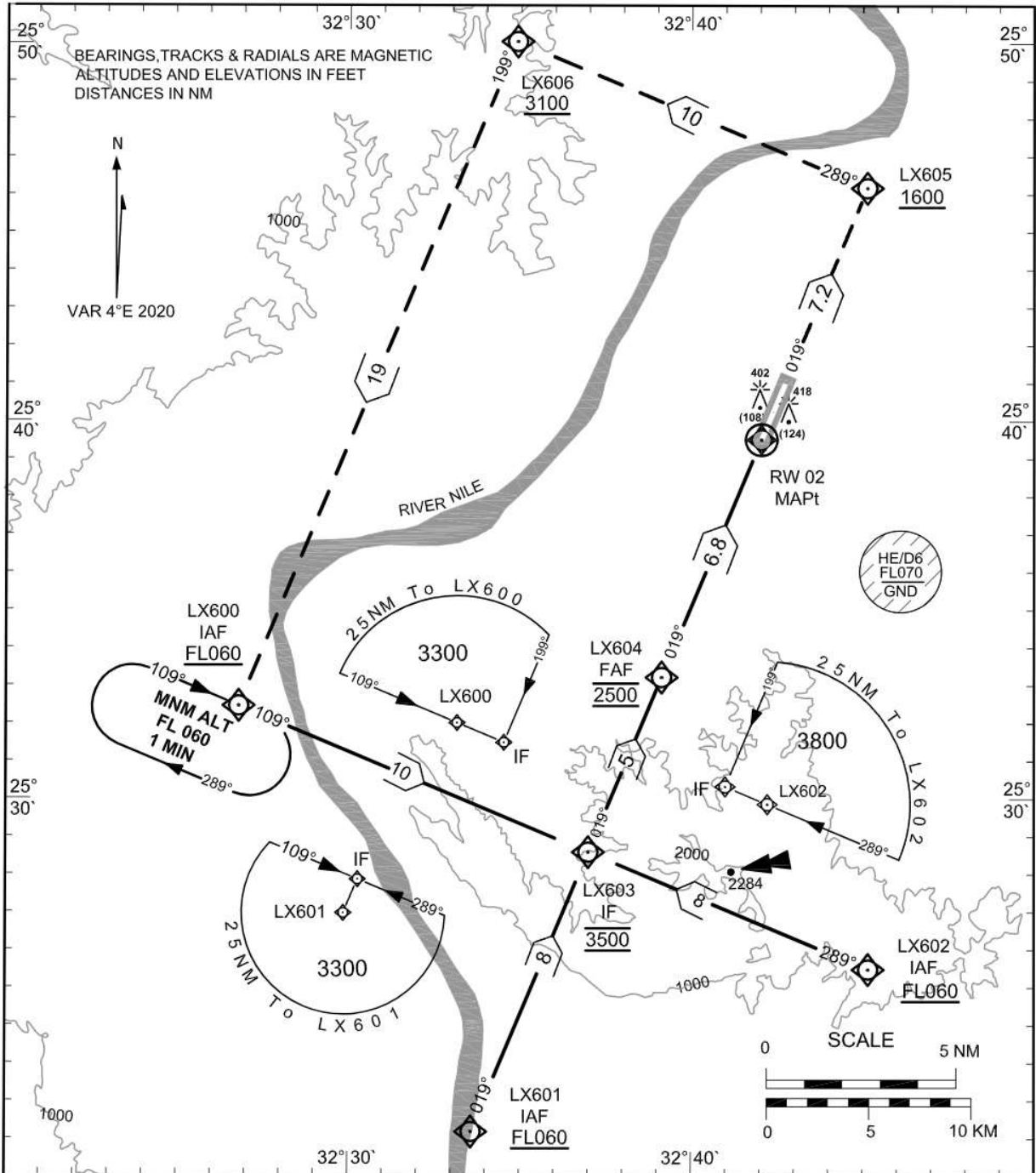
HELX/LXR

**INSTRUMENT  
APPROACH  
CHART-ICAO**

**AD ELEV 294 FT  
HEIGHTS RELATED TO  
AD ELEVATION**

TWR&APP	119.9 ,118.1
RADAR APP	124.3 ,118.1
EMG	121.5
GND	121.9
ATIS	122.6

**LUXOR / LUXOR  
RNP RWY 02**



<b>OCA(OCH)</b>	<b>A</b>	<b>B</b>	<b>C</b>	<b>D</b>	<b>T MNM BARO VNAV : 0°C</b>						
<b>LNAV</b>	740 (446)				<b>Gnd speed -Kts</b>	70	90	100	120	140	160
<b>LNAV / VNAV</b>	560 (266)				<b>Descent angle(3.00°)</b>	372	478	531	637	743	850





For Simulation Use Only  
Not For Real life

HELX/LXR

<b>Instrument Approach CHART-ICAO</b>	AD ELEV 294 FT HEIGHTS RELATED TO AD ELEVATION T MNM baroVNAV= 0°c	TWR&APP 119.9 118.1 RADAR APP 124.3 ,118.1 EMG 121.5 GND 121.9 ATIS 122.6	<b>LUXOR / LUXOR RNP RWY 02</b>
---	---	---	-------------------------------------

**TABULAR DESCRIPTION**

Serial Number	Path Descriptor	Waypoint Identifier	Fly-Over	Course °M(°T)	Magnetic Variation	Distance (NM)	Turn Direction	Altitude (FT)	Speed (Kts)	VPA°/TCH (FT)	Navigation Specification
010	IF	LX600	-	-	-4	-	-	+FL060	-	-	RNP APCH
020	TF	LX603	-	109(112.6)	-4	10	L	@3500	-	-	RNP APCH
010	IF	LX602	-	-	-4	-	-	+FL060	-	-	RNP APCH
020	TF	LX603	-	289(292.7)	-4	8	R	@3500	-	-	RNP APCH
010	IF	LX601	-	-	-4	-	-	+FL060	-	-	RNP APCH
020	TF	LX603	-	019(022.7)	-4	8	-	@3500	-	-	RNP APCH
010	IF	LX603	-	-	-4	-	-	@3500	-	-	RNP APCH
020	TF	LX604	-	019(022.7)	-4	5	-	@2500	-	-	RNP APCH
030	TF	RW02	Y	019(022.7)	-4	6.8	-	-	-	3.0/50	RNP APCH
040	TF	LX605	-	019(022.7)	-4	7.2	L	+1600	-	-	RNP APCH
050	TF	LX606	-	289(292.7)	-4	10	L	+3100	-	-	RNP APCH
060	TF	LX600	-	199(202.7)	-4	19	-	+FL060	-	-	RNP APCH
070	HM	LX600	-	109(112.6)	-4	1MIN	R	+FL060	-	-	RNP APCH

**Waypoint Coordinates**

Waypoint Identifier	Coordinates
LX600	25° 32' 27.6"N 032° 26' 47.7"E
LX601	25° 21' 11.2"N 032° 33' 35.2"E
LX602	25° 25' 29.1"N 032° 45' 09.7"E
LX603	25° 28' 35.5"N 032° 36' 59.9"E
LX604	25° 33' 13.2"N 032° 39' 08.0"E
LX605	25° 46' 10.5"N 032° 45' 07.6"E
LX606	25° 50' 03.2"N 032° 34' 54.2"E
RW02	25° 39' 30.79"N 032° 42' 02.49"E



For Simulation Use Only  
Not For Real life

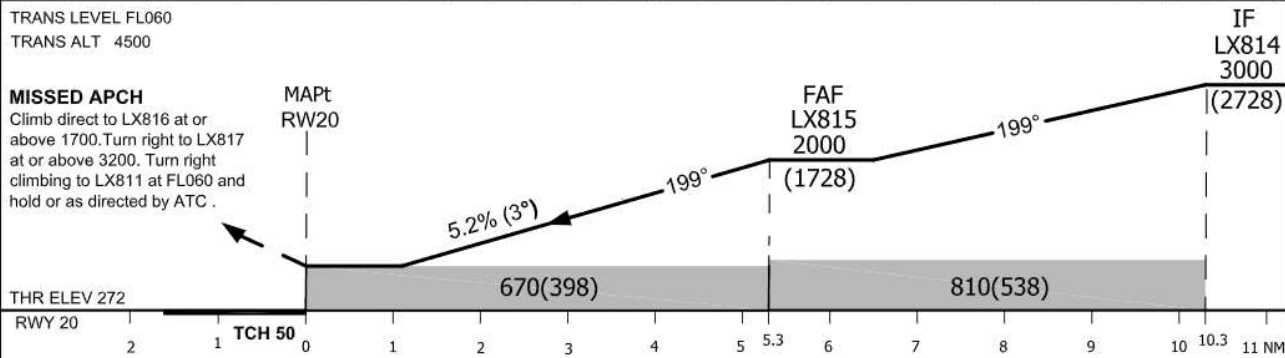
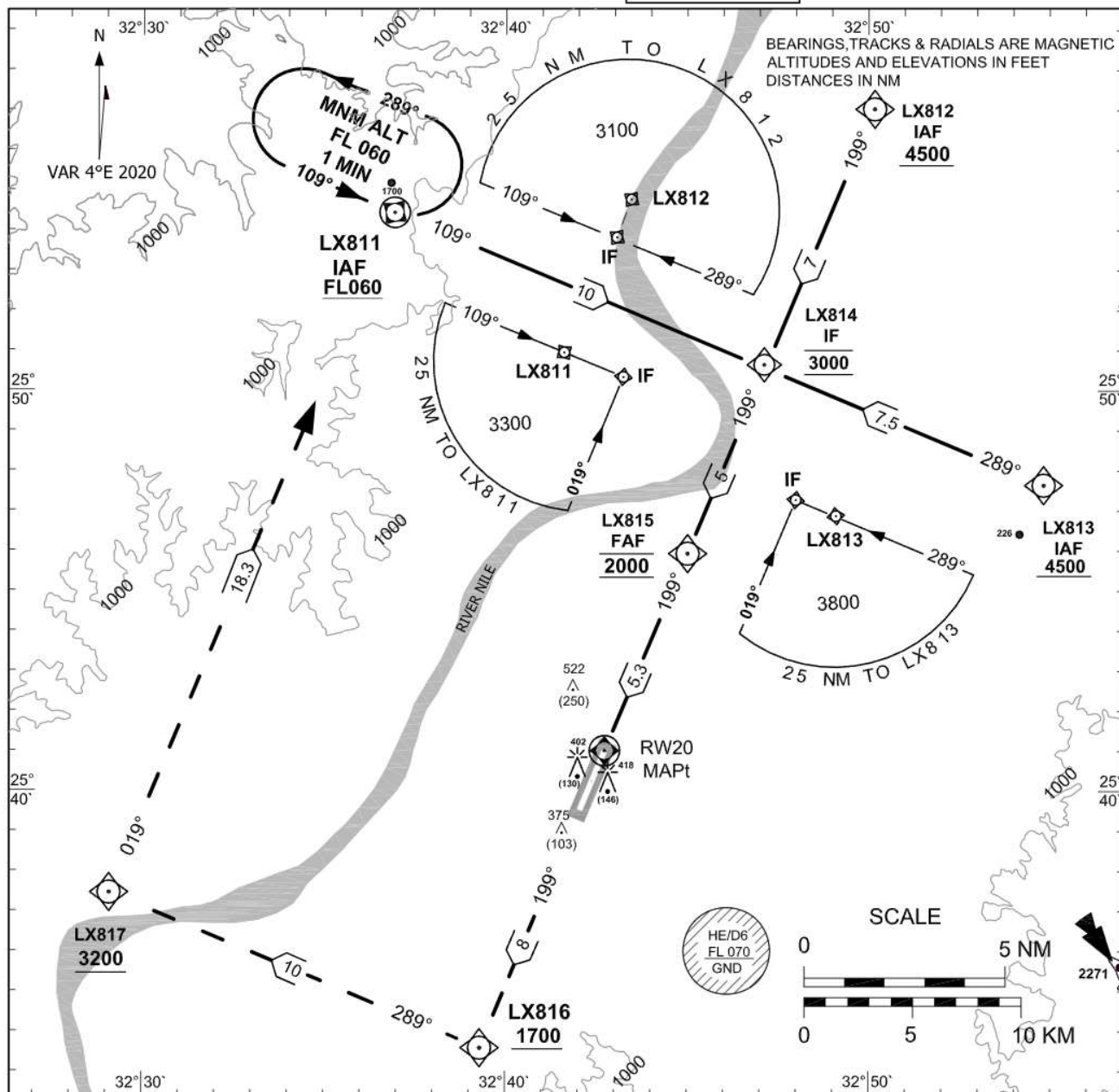
# HELX/LXR

**INSTRUMENT  
APPROACH  
CHART-ICAO**

AD ELEV 294 FT  
HEIGHTS RELATED TO  
THR RWY 20L ELEV 272FT

TWR&APP	119.9 ,118.1
RADAR APP	124.3 ,118.1
EMERG	121.5
GND	121.9
ATIS	122.6

**LUXOR / LUXOR  
RNP RWY 20**



OCA (OCH)	A	B	C	D	<b>T MNM BARO VNAV : 0°C</b>						
LNAV	670 (398)				Gnd speed -Kts	70	90	100	120	140	160
LNAV / VNAV	530 (258)				Descent angle(3.00°)	372	478	531	637	743	850





For Simulation Use Only  
Not For Real life

HELX/LXR

<b>Instrument Approach CHART-ICAO</b>	AD ELEV 294FT HEIGHTS RELATED TO THR RWY 20 ELEV 272FT T MNM baroVNAV= 0°c	TWR & APP 119.9, 118.1 RADAR APP 124.3, 118.1 EMERG 121.5 GND 121.9 ATIS 122.6	<b>LUXOR / LUXOR RNP RWY 20</b>
---------------------------------------	---	--	-------------------------------------

TABULAR DESCRIPTION											
Serial Number	Path Descriptor	Waypoint Identifier	Fly-Over	Course °M(°T)	Magnetic Variation	Distance (NM)	Turn Direction	Altitude (ft)	Speed (Kts)	VPA°/TCH(FT)	Navigation Specification
010	IF	LX 811	-	-	-4	-	-	+FL060	-	-	RNP APCH
020	TF	LX 814	-	109(112.7)	-4	10	R	@3000	-	-	RNP APCH
010	IF	LX 812	-	-	-4	-	-	+4500	-	-	RNP APCH
020	TF	LX 814	-	199(202.8)	-4	7	-	@3000	-	-	RNP APCH
010	IF	LX 813	-	-	-4	-	-	+4500	-	-	RNP APCH
02	TF	LX 814	-	289(292.8)	-4	7.5	L	@3000	-	-	RNP APCH
010	IF	LX 814	-	-	-4	-	-	@3000	-	-	RNP APCH
020	TF	LX 815	-	199(202.7)	-4	5	-	@2000	-	-	RNP APCH
030	TF	RW20	Y	199(202.7)	-4	5.3	-	-	-	-3.0/50	RNP APCH
040	TF	LX 816	-	199(202.7)	-4	8	R	+1700	-	-	RNP APCH
050	TF	LX 817	-	289(292.7)	-4	10	R	+3200	-	-	RNP APCH
060	TF	LX 811	-	019(022.6)	-4	18.3	-	+FL060	-	-	RNP APCH
070	HM	LX 811	-	109(112.7)	-4	1 MIN	L	+FL060	-	-	RNP APCH

**WAYPOINT LIST**

Waypoint Identifier	Coordinates
LX811	25° 54' 26.44" N 032° 36' 55.89" E
LX 812	25° 57' 02.20" N 032° 50' 10.14" E
LX 813	25° 47' 38.63" N 032° 54' 49.51" E
LX 814	25° 50' 33.68" N 032° 47' 09.64" E
LX 815	25° 45' 56.12" N 032° 45' 00.91" E
RW20	25° 41' 00.68" N 032° 42' 44.08" E
LX 816	25° 33' 35.31" N 032° 39' 18.20" E
LX 817	25° 37' 27.55" N 032° 29' 05.67" E



For Simulation Use Only  
Not For Real life

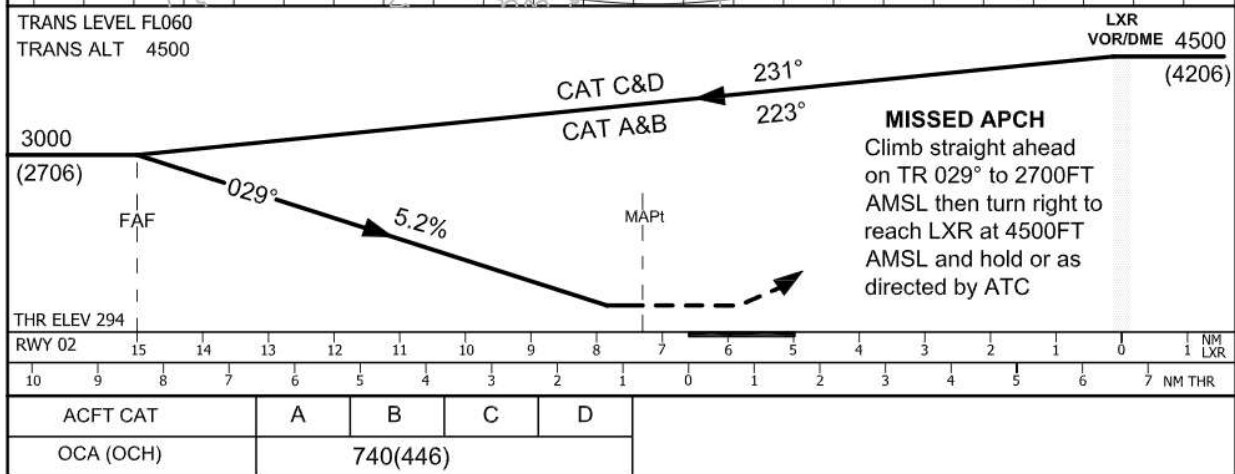
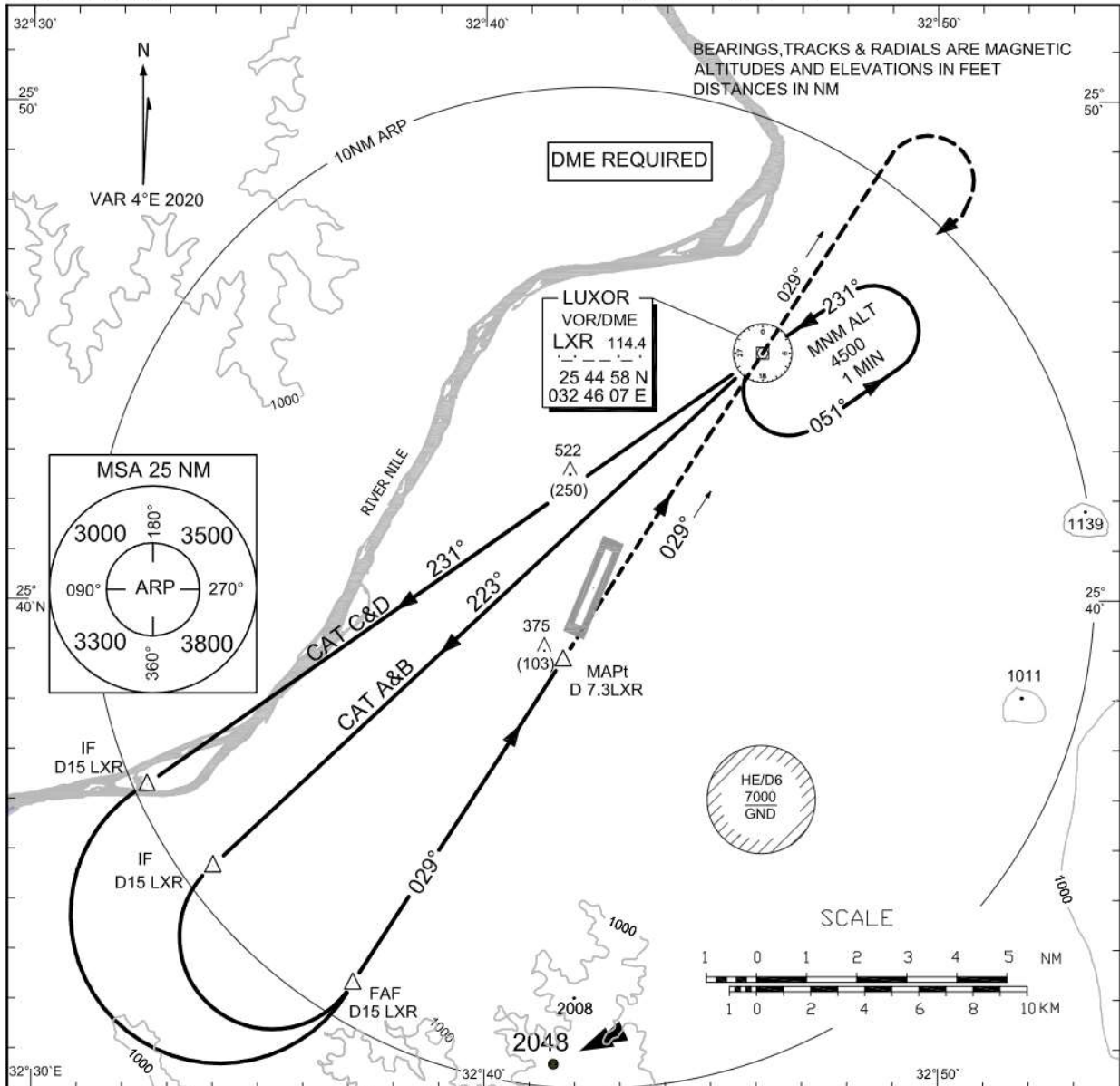
HELX/LXR

**INSTRUMENT  
APPROACH  
CHART-ICAO**

AD ELEV 294 FT  
HEIGHTS RELATED TO  
AD ELEVATION

TWR&APP	119.9, 118.1
RADAR APP	124.3, 118.1
EMERG	121.5
GND	121.9
ATIS	122.6

**LUXOR / LUXOR**  
VOR RWY 02







**LUXOR (HELX)**

VOR RWY 02

**AERONAUTICAL DATA TABULATION**

VOR APCH to RWY 02 from LXR VOR/DME	
Fix/point	Coordinates
LXR VOR/DME (IAF)	25 44 58.0N 032 46 07.0E
D15 LXR –TR231°/15NM LXR FOR ACFT (C&D)	25 36 18.1N 032 32 32.1E
D15 LXR –TR223°/15NM LXR FOR ACFT (A&B)	25 34 40.4N 032 33 59.9E
D15 LXR –TR 029°(FAF)	25 32 25.7N 032 36 55.6E
(MAPt) D7.3 LXR	25 38 49.01N 032 41 43.2E
THR RWY 02	25 39 30.79 N 032 42 02.49E



For Simulation Use Only  
Not For Real life

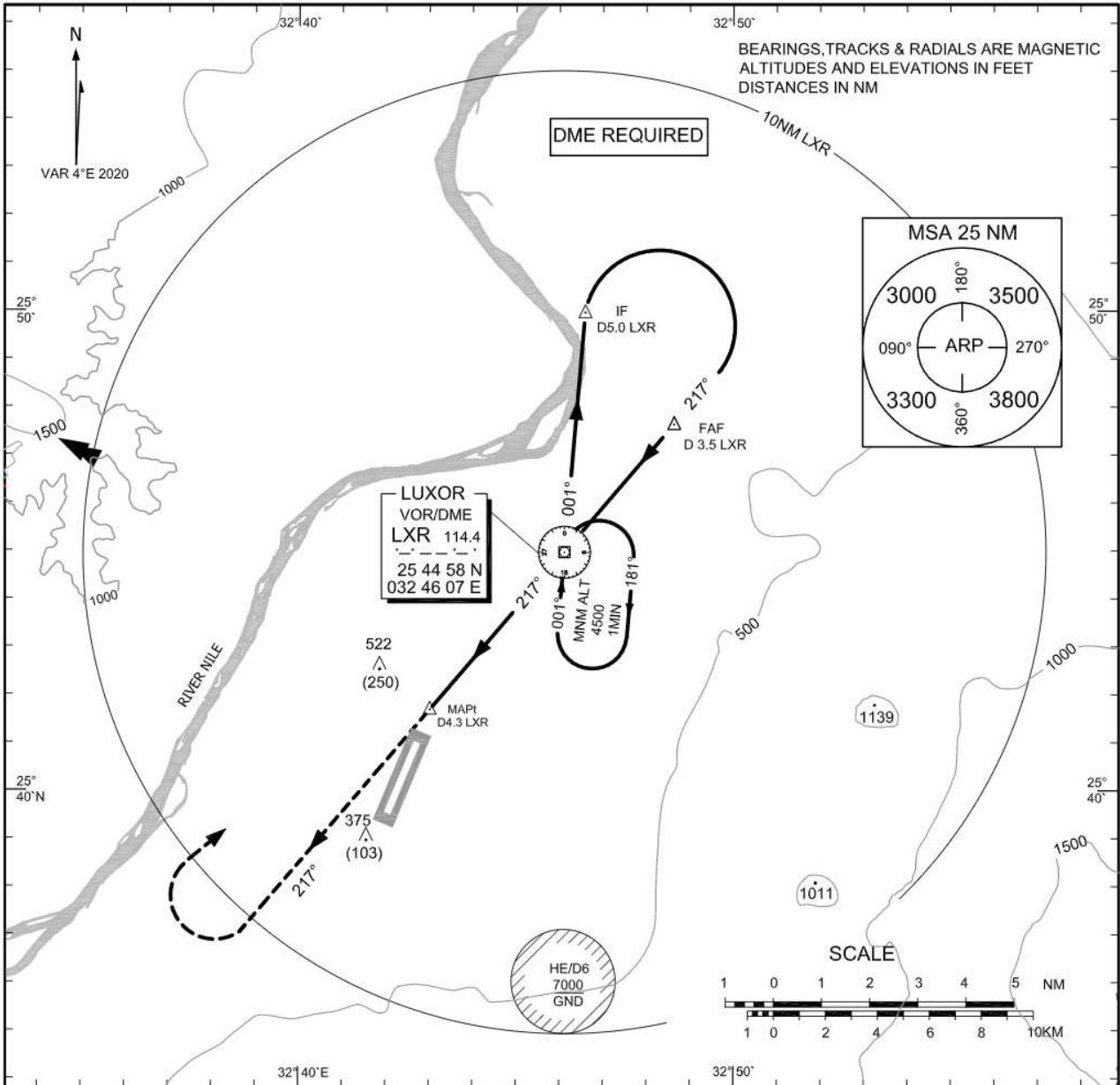
HELX/LXR

INSTRUMENT  
APPROACH  
CHART-ICAO

AD ELEV 294 FT  
HEIGHTS RELATED TO  
THR 20 ELEV 272 FT

TWR&APP	119.9, 118.1
RADAR APP	124.3, 118.1
EMERG	121.5
GND	121.9
ATIS	122.6

LUXOR / LUXOR  
VOR RWY 20  
(CAT A&B)



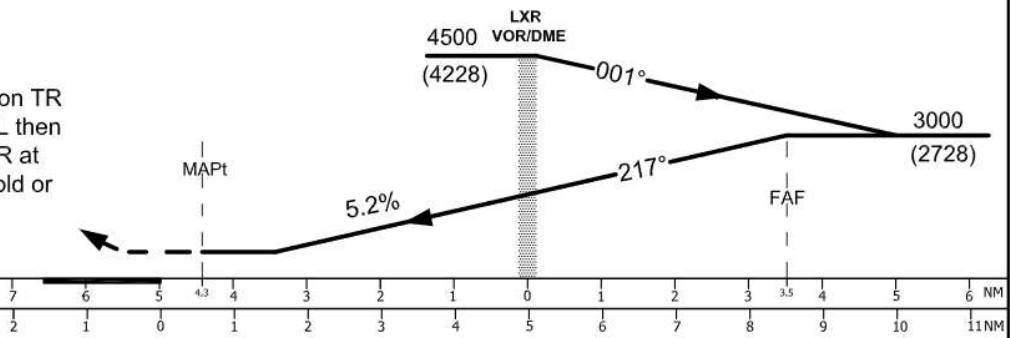
TRANS LEVEL FL060  
TRANS ALT 4500

**MISSED APCH**

Climb straight ahead on TR 217° to 1500FT AMSL then turn right to reach LXR at 4500FT AMSL and hold or as directed by ATC.

THR ELEV 272

THR RWY 20



ACFT CAT	A	B
OCA (OCH)	760(488)	



**LUXOR (HELX)**

VOR RWY 20 (CAT A&B)

**AERONAUTICAL DATA TABULATION**

VOR APCH to RWY 20 from VOR/DME (LXR)	
Fix/point	Coordinates
VOR (LXR) (IAF)	25 44 58N 032 46 07E
D5.0 LXR – TR 001°LXR (IF)	25 49 58N 032 46 35.4E
D3.5 LXR –TR 217°/VOR (FAF)	25 47 38.1N 032 48 38.3E
D4.3LXR (MAPt)	25 41 41.2N 032 43 01.27E
THR RWY 20	25 41 00.68N 032 42 44.08E