



For Simulation Use Only
Not For Real Life

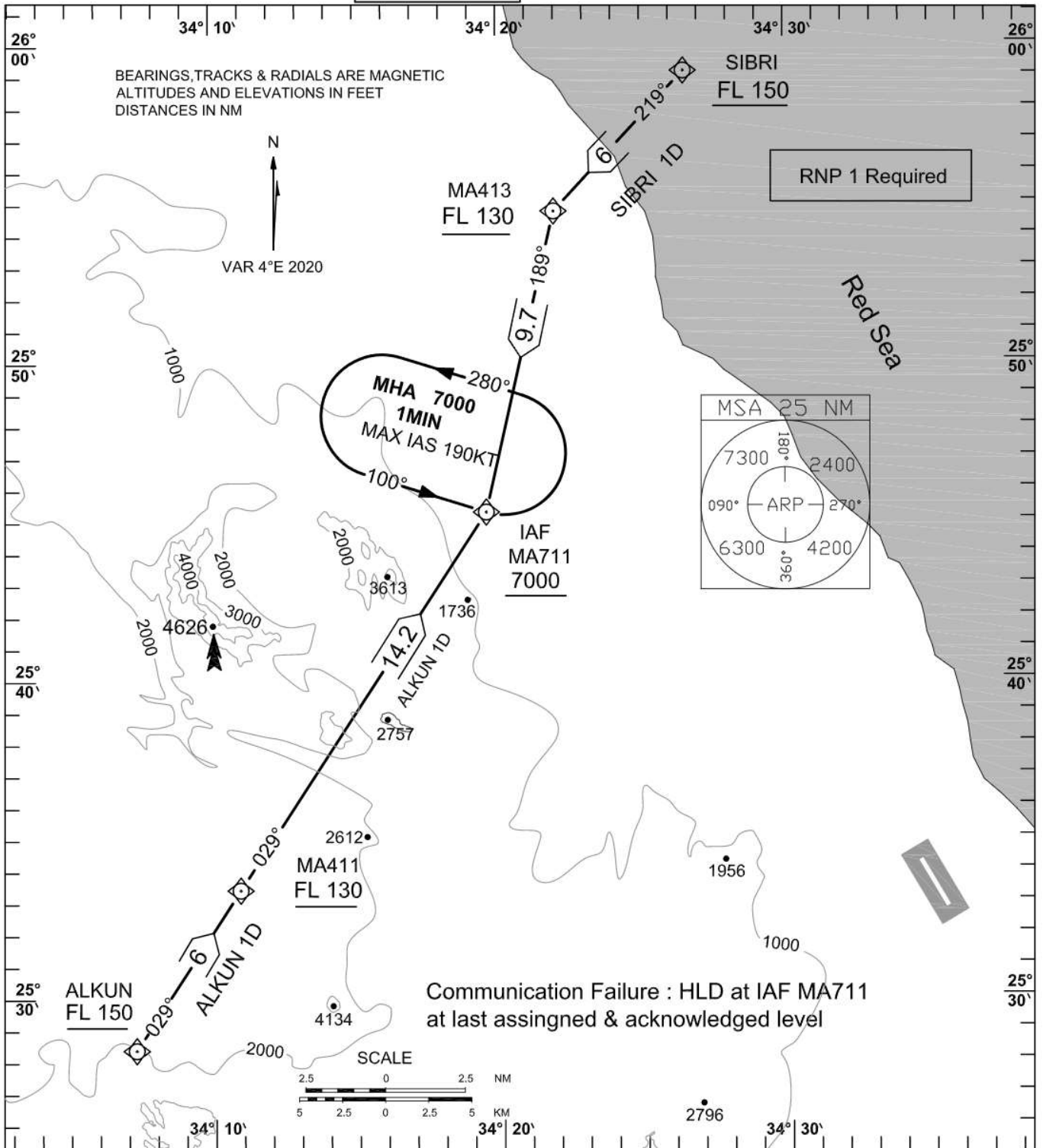
HEMA/RMF

STANDARD ARRIVAL CHART -
INSTRUMENT (STAR) - ICAO

TWR & APP	121.0
EMERG	121.5
GND	121.9

TRANS ALT
9500

MARSA ALAM / MARSA ALAM
RNAV(GNSS) RWY15





For Simulation Use Only
Not For Real Life

HEMA/RMF

**STANDARD ARRIVAL CHART -
INSTRUMENT (STAR)-ICAO**

TWR & APP 121.0
EMERG 121.5
GND 121.9

MARSA ALAM/ **MARSA ALAM**
RNAV (GNSS)
RWY 15

TABLUAR DESCRIPTION

ALKUN 1D RNP1

Serial Number	Path Descriptor	Waypoint Identifier	Fly-Over	Course °M(°T)	Magnetic Variation	Distance (NM)	Turn Direction	Altitude(ft)	Speed (Kts)	VPA TCH	Navigation Specification
001	IF	ALKUN	-		-4	-	-	+FL150	-	-	RNP 1
002	TF	MA411	-	029(033.3)	-4	6	-	+FL130	-	-	RNP 1
003	TF	MA711	-	029(033.4)	-4	14.2	-	+7000	190	-	RNP 1

SIBRI 1D RNP1

001	IF	SIBRI	-	-	-4	-	-	+FL150	-	-	RNP 1
002	TF	MA413	-	219(223.1)	-4	6	-	+FL130	-	-	RNP 1
003	TF	MA711	-	189(193.0)	-4	9.7	L	+7000	190	-	RNP 1

Waypoint LIST

Serial Number	Waypoint Identifier	Coordinates	
		Latitude	Longitude
1	MA411	25 33 24.2N	034 10 54.6E
2	MA413	25 54 44.0N	034 21 57.9E
3	MA711	25 45 16.4N	034 19 32.7E
4	SIBRI	25 59 07.7N	034 26 30.8E
5	ALKUN	25 28 22.4N	034 07 15.8E



For Simulation Use Only
Not For Real Life

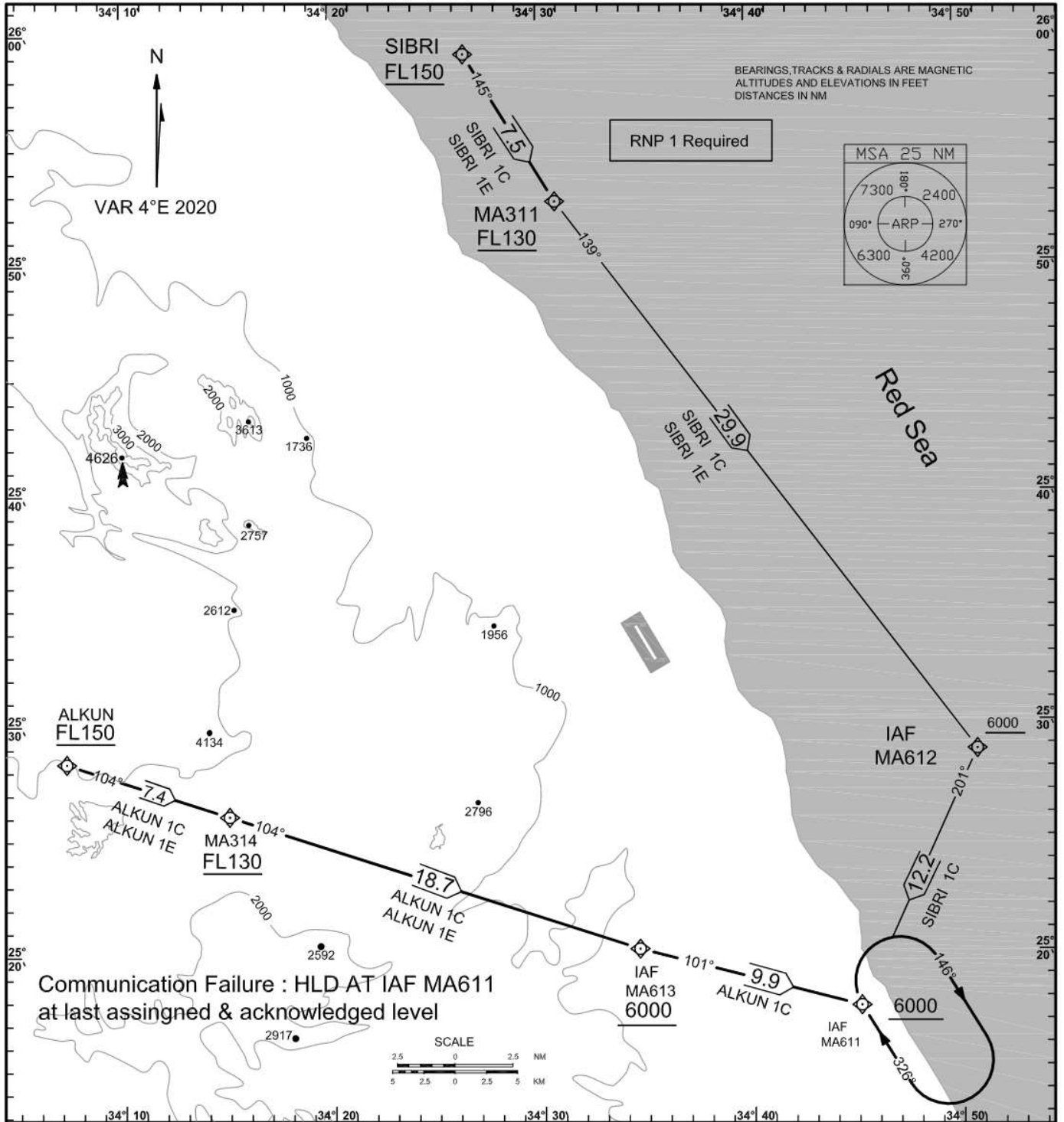
HEMA/RMF

STANDARD ARRIVAL CHART -
INSTRUMENT (STAR) - ICAO

TWR & APP	121.0
EMERG	121.5
GND	121.9

TRANS ALT
9500

MARSA ALAM / MARSA ALAM
RNAV(GNSS) RWY33





For Simulation Use Only
Not For Real Life

HEMA/RMF

STANDARD ARRIVAL CHART - INSTRUMENT (STAR)-ICAO

TWR & APP	121.0
EMERG	121.5
GND	121.9

MARSA ALAM/ MARSA ALAM RNAV (GNSS) RWY 33

TABLUAR DESCRIPTION

ALKUN 1C RNP1

Serial Number	Path Descriptor	Waypoint Identifier	Fly-Over	Course °M(°T)	Magnetic Variation	Distance (NM)	Turn Direction	Altitude(ft)	Speed (Kts)	VPA TCH	Navigation Specification
001	IF	ALKUN	-	-	-4	-	-	+FL150	-	-	RNP 1
002	TF	MA314	-	104(108.2)	-4	7.4	-	+FL130	-	-	RNP 1
003	TF	MA613	-	104(108.3)	-4	18.7	-	+6000	-	-	RNP 1
004	TF	MA611	-	101(104.7)	-4	9.9	L	+6000	-	-	RNP 1

ALKUN 1E RNP1

001	IF	ALKUN	-	-	-4	-	-	+FL150	-	-	RNP 1
002	TF	MA314	-	104(108.2)	-4	7.4	-	+FL130	-	-	RNP 1
003	TF	MA613	-	104(108.3)	-4	18.7	-	+6000	-	-	RNP 1

SIBRI 1C RNP1

001	IF	SIBRI	-	-	-4	-	-	+FL150	-	-	RNP 1
002	TF	MA311	-	145(148.6)	-4	7.5	-	+FL130	-	-	RNP 1
003	TF	MA612	-	139(142.9)	-4	29.9	L	+6000	-	-	RNP 1
004	TF	MA611	-	201(204.9)	-4	12.2	R	+6000	-	-	RNP 1

SIBRI 1E RNP1

001	IF	SIBRI	-	-	-4	-	-	+FL150	-	-	RNP 1
002	TF	MA311	-	145(148.6)	-4	7.5	-	+FL130	-	-	RNP 1
003	TF	MA612	-	139(142.9)	-4	29.9	L	+6000	-	-	RNP 1

WAYPOINT LIST

Serial Number	Waypoint Identifier	Coordinates	
		Latitude	Longitude
1	SIBRI	25 59 07.7N	034 26 30.8E
2	ALKUN	25 28 22.4N	034 07 15.8E
3	MA314	25 26 03.4N	034 15 01.6E
4	MA613	25 20 11.0N	034 34 34.4E
5	MA611	25 17 39.0N	034 45 08.3E
6	MA612	25 28 45.6N	034 50 48.1E
7	MA311	25 52 41.9N	034 30 51.1E



For Simulation Use Only
Not For Real Life

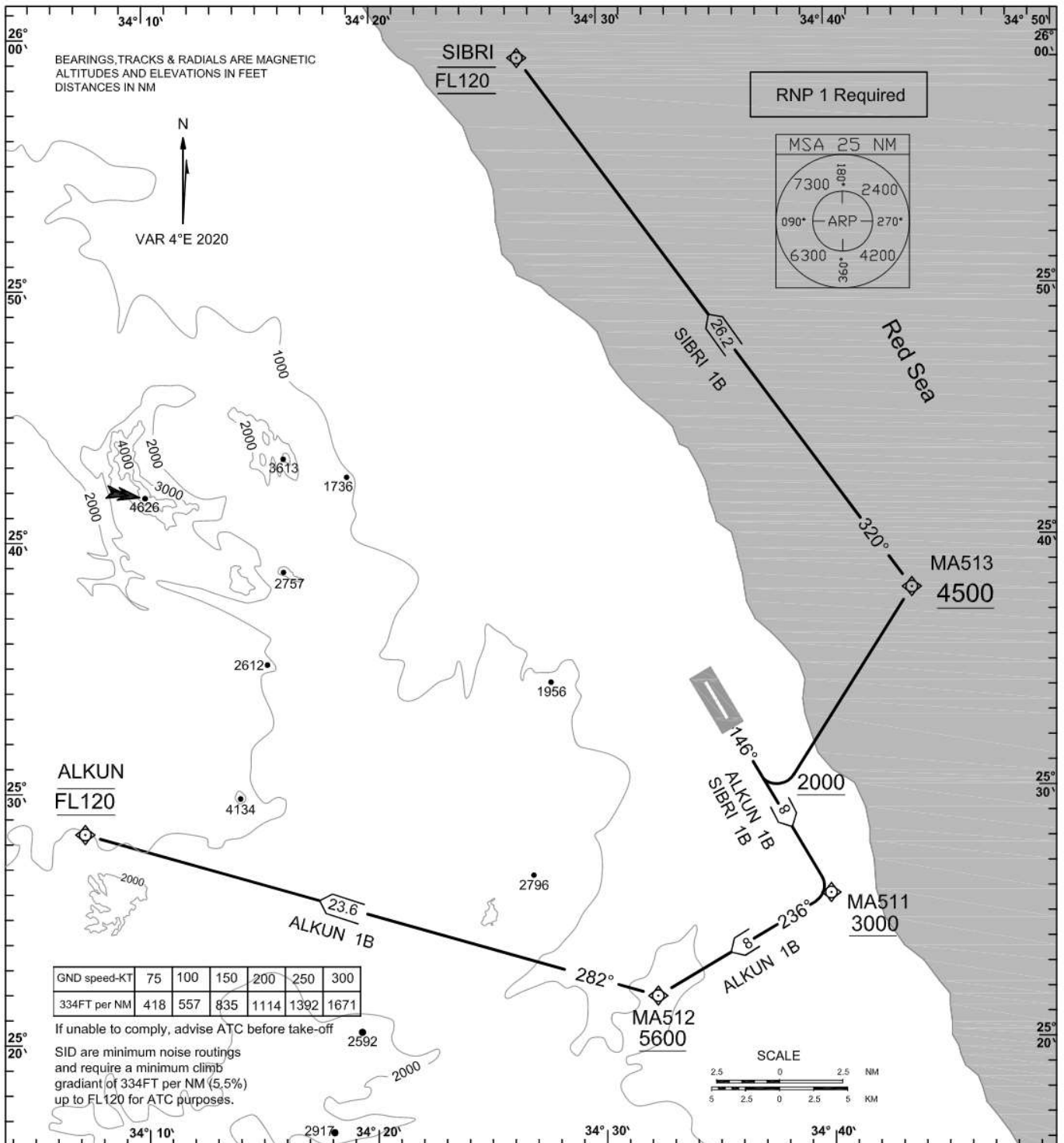
HEMA/RMF

STANDARD DEPARTURE CHART - INSTRUMENT (SID) - ICAO

TWR & APP	121.0
EMERG	121.5
GND	121.9

TRANS ALT	9500
-----------	------

MARSA ALAM / MARSALA ALAM
RNAV(GNSS) RWY15





For Simulation Use Only
Not For Real Life

HEMA/RMF

STANDARD DEPARTURE CHART - INSTRUMENT (SID)-ICAO

TWR & APP	121.0
EMERG	121.5
GND	121.9

MARSA ALAM/ **MARSA ALAM**
RNAV (GNSS)
RWY 15

TABLUAR DESCRIPTION												
ALKUN 1B RNP1												
Serial Number	Path Descriptor	Waypoint Identifier	Fly-Over	Course °M(°T)	Magnetic Variation	Distance (NM)	Turn Direction	Altitude(ft)	Speed (Kts)	VPA TCH	Navigation Specification	
1	CF	MA511	-	146(149.8)	-4	8.0	-	+3000	-	5.5%	RNP1	
2	TF	MA512	-	236(239.8)	-4	8.0	R	+5600	-	5.5%	RNP1	
3	TF	ALKUN	-	282(286.3)	-4	23.6	R	@FL120	-	5.5%	RNP1	
SIBRI 1B RNP1												
1	CA	-	-	146(149.8)	-4	-	-	+2000	-	5.5%	RNP1	
2	DF	MA513	-	-	-4	-	L	+4500	-	5.5%	RNP1	
3	TF	SIBRI	-	320(323.9)	-4	26.2	L	@FL120	-	5.5%	RNP1	
Waypoint LIST												
Serial Number	Waypoint Identifier	Coordinates										
		Latitude	Longitude									
1	MA511	25 25 48.0	034 39 55.1									
2	MA512	25 21 45.4	034 32 17.1									
3	ALKUN	25 28 22.4	034 07 15.8									
4	MA513	25 37 55.9	034 43 36.6									
5	SIBRI	25 59 07.7	034 26 30.8									



For Simulation Use Only
Not For Real Life

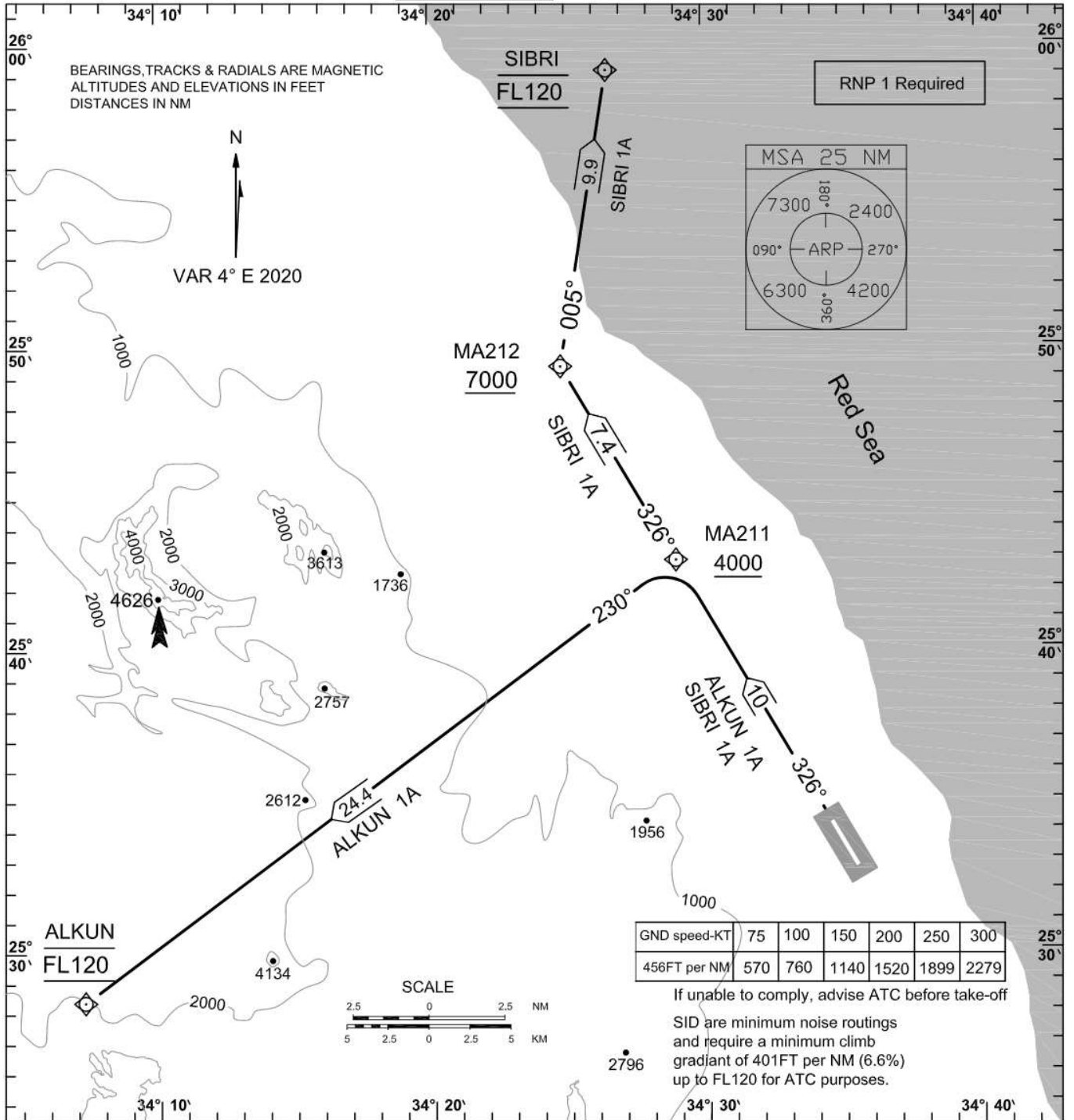
HEMA/RMF

STANDARD DEPARTURE CHART - INSTRUMENT (SID) - ICAO

TWR & APP	121.0
EMERG	121.5
GND	121.9

TRANS ALT	9500
-----------	------

MARSA ALAM / MARSA ALAM
RNAV(GNSS) RWY33





For Simulation Use Only
Not For Real Life

HEMA/RMF

**STANDARD DEPARTURE CHART-
INSTRUMENT (SID)-ICAO**

TWR & APP	121.0
EMERG	121.5
GND	121.9

MARSA ALAM/ **MARSA ALAM**
RNAV (GNSS)
RWY 33

TABLUAR DESCRIPTION

ALKUN 1A RNP1

Serial Number	Path Descriptor	Waypoint Identifier	Fly-Over	Course °M(°T)	Magnetic Variation	Distance (NM)	Turn Direction	Altitude(ft)	Speed (Kts)	VPA TCH	Navigation Specification
1	CF	MA211	-	326(329.8)	-4	10	-	+4000	-	6.6%	RNP1
2	TF	ALKUN	-	230(233.6)	-4	24.4	L	@FL120	-	6.6%	RNP1

SIBRI 1A RNP1

1	CF	MA211	-	326(329.8)	-4	10	-	+4000	-	6.6%	RNP1
2	TF	MA212	-	326(329.8)	-4	7.4	-	+7000	-	6.6%	RNP1
3	TF	SIBRI	-	005(009.2)	-4	9.9	R	@FL120	-	6.6%	RNP1

Waypoint LIST

Serial Number	Waypoint Identifier	Coordinates	
		Latitude	Longitude
1	MA211	25 42 54.6N	034 28 55.0E
2	ALKUN	25 28 22.4N	034 07 15.8E
3	MA212	25 49 20.3N	034 24 46.0E
4	SIBRI	25 59 07.7N	034 26 30.8E



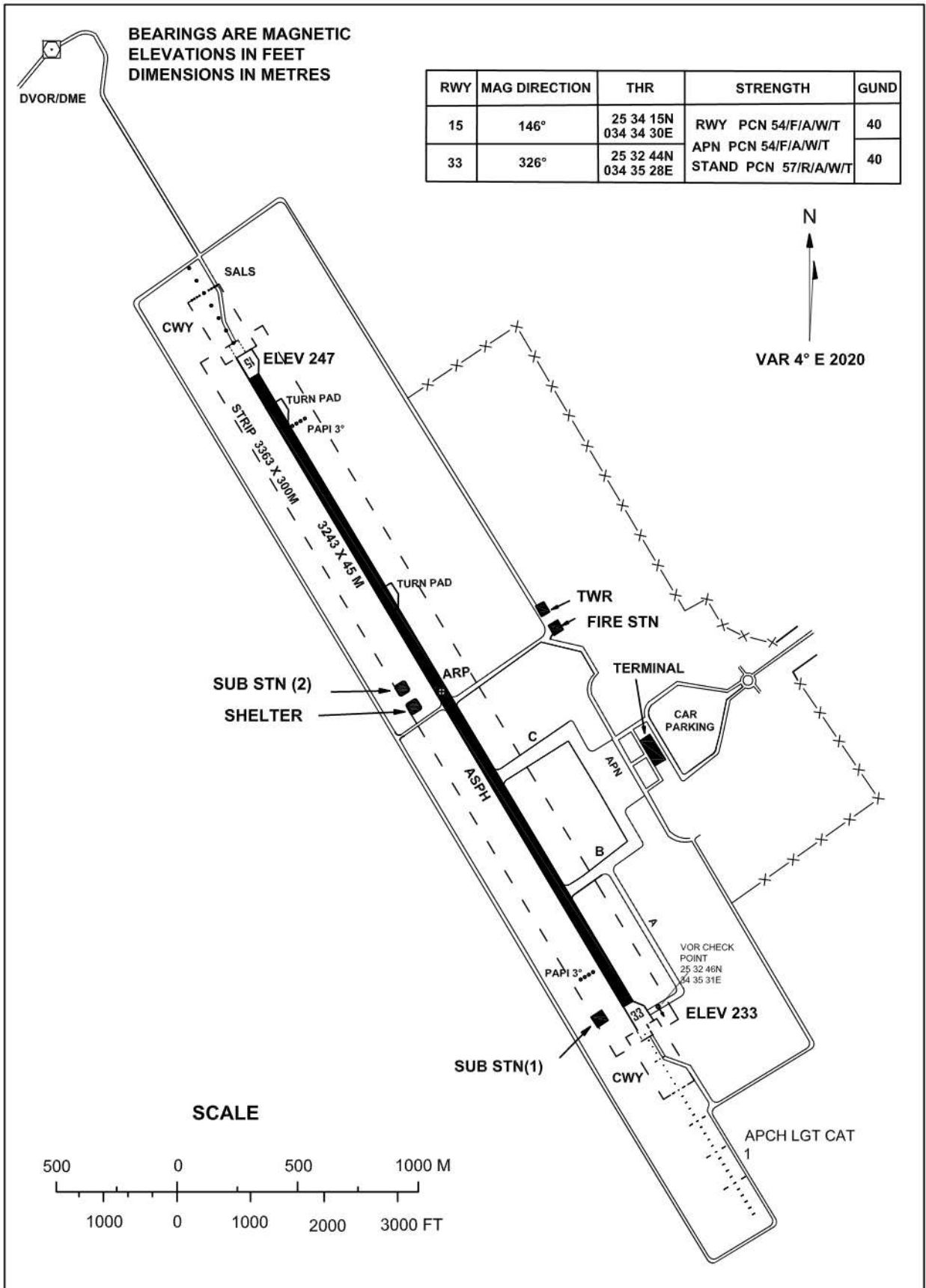
For Simulation Use Only
Not For Real Life

HEMA/RMF

AERODROME CHART-ICAO 25 33 29 N
034 34 59E **ELEV 251 FT**

TWR & APP	121.0
EMERG	121.5
GND	121.9

**MARSA ALAM /
MARSA ALAM**





For Simulation Use Only
Not For Real Life

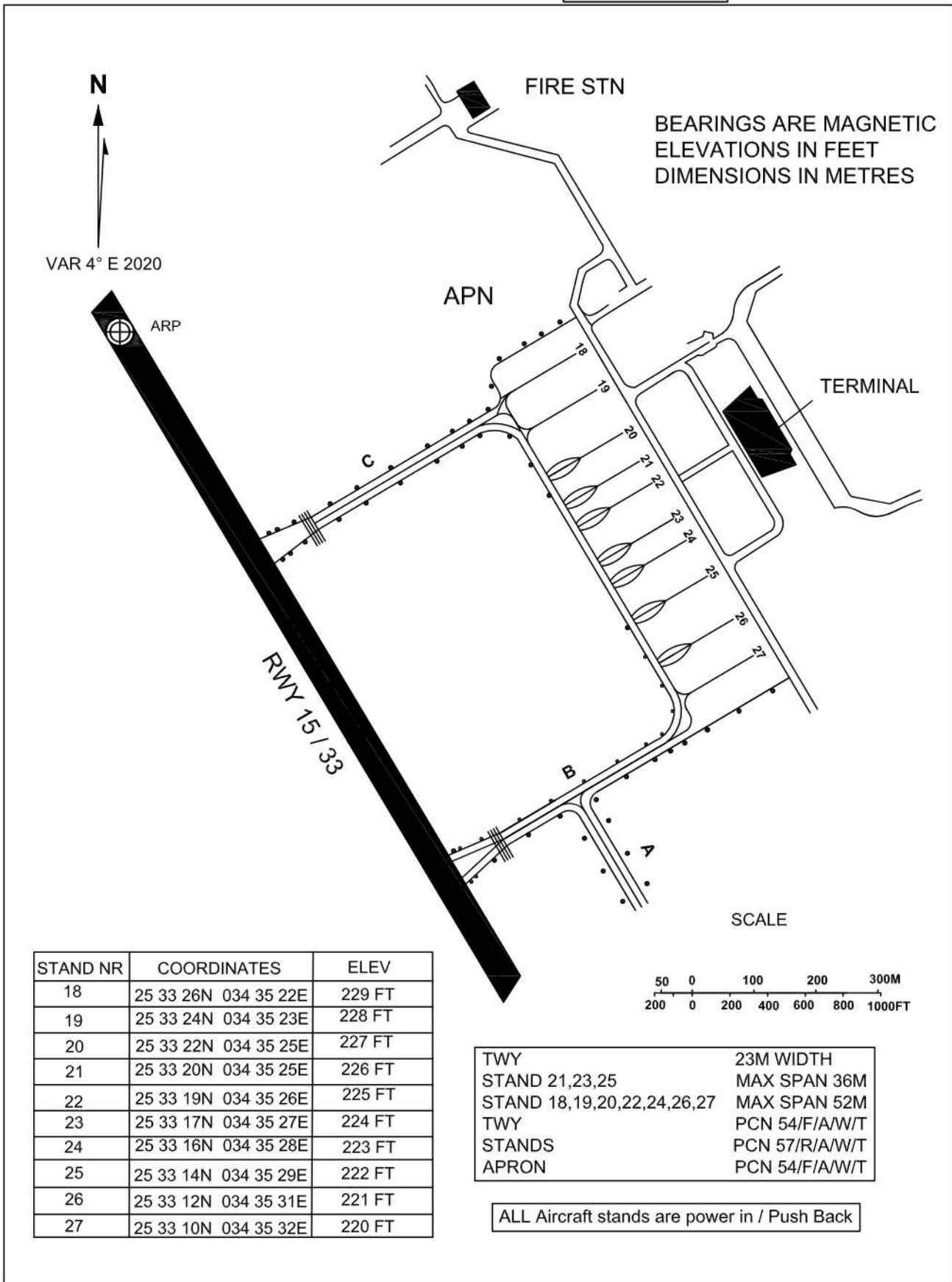
HEMA/RMF

AIRCRAFT PARKING / DOCKING CHART - ICAO.

APN ELEV 229FT

TWR & APP	121.0
EMERG	121.5
GND	121.9

MARSA ALAM / MARSA ALAM





For Simulation Use Only
Not For Real Life

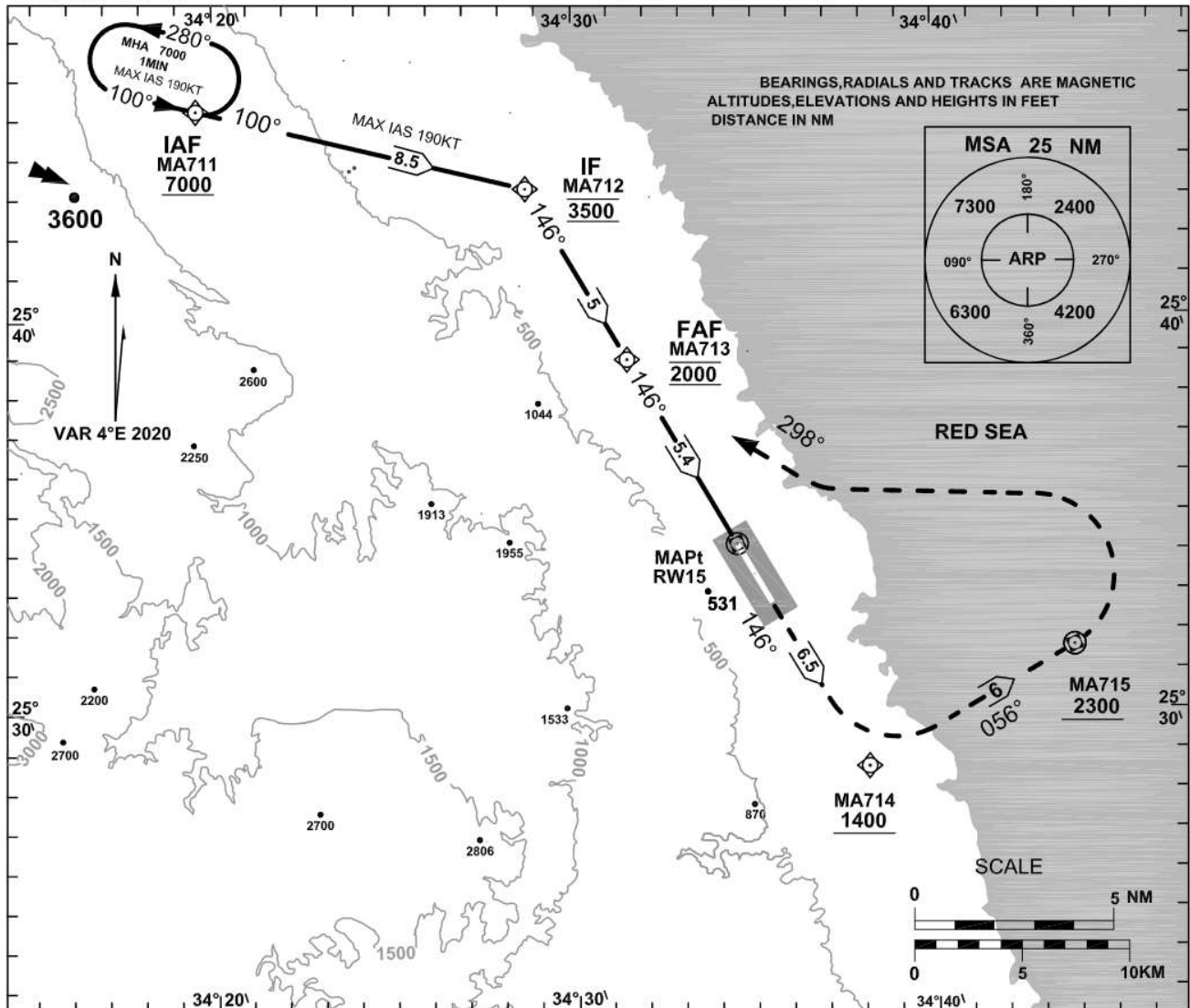
HEMA/RMF

INSTRUMENT APPROACH CHART-ICAO

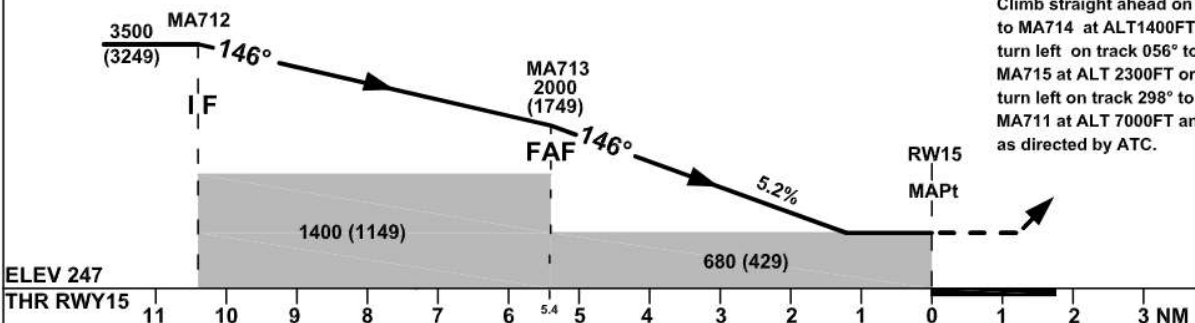
AERODROME ELEV 251FT
HEIGHTS RELATED TO AD ELEV

TWR & APP	121.0
EMERG	121.5
GND	121.9

MARSA ALAM / MARSA ALAM
RNP RWY 15



TRANS LEVEL 110
TRANS ALT 9500



MISSED APCH
Climb straight ahead on track 146° to MA714 at ALT 1400FT or above, turn left on track 056° to reach MA715 at ALT 2300FT or above then turn left on track 298° to reach MA711 at ALT 7000FT and hold or as directed by ATC.

ELEV 247
THR RWY15 11 10 9 8 7 6 5.4 5 4 3 2 1 0 1 2 3 NM

OCA(OCH)	A	B	C	D
LNAV	680 (429)			

GND speed - KT	70	90	100	120	140	160
Descent angle(3.00°)	372	478	531	637	743	850



For Simulation Use Only
Not For Real Life

HEMA/RMF

INSTRUMENT AD ELEV 251FT
APPROACH HEIGHTS RELATED
CHART-ICAO TO AD ELEV

TWR & APP	121.0
EMERG	121.5
GND	121.9

MARSA ALAM/ **MARSA ALAM**
RNP RWY 15

TABULAR DESCRIPTION											
Serial Number	Path Descriptor	Waypoint Identifier	Fly-Over	Course °M(°T)	Magnetic Variation	Distance (NM)	Turn Direction	Altitude(ft)	Speed (Kts)	VPA/TCH	Navigation Specification
001	IF	MA711	-	-	-4	-	-	+7000	190	-	RNP APCH
002	TF	MA712	-	100(103.7)	-4	8.5	R	@3500	190	-	RNP APCH
003	TF	MA713	-	146(149.7)	-4	5	-	@2000	-	-	RNP APCH
004	TF	RW15	Y	146(149.7)	-4	5.4	-	-	-	-3.0/50	RNP APCH
005	CF	MA714	-	146(149.7)	-4	6.5	-	+1400	-	-	RNP APCH
006	TF	MA715	Y	056(059.8)	-4	6	L	+2300	-	-	RNP APCH
007	TF	MA711	-	298(301.8)	-4	25.8	L	@7000	-	-	RNP APCH
008	HM	MA711	-	100(103.7)	-4	-	L	+7000	190	-	RNP APCH
Waypoint LIST											
Waypoint Identifier						Coordinates					
MA711						25 45 16.4 N 034 19 32.7 E					
MA712						25 43 15.4 N 034 28 41.6 E					
MA713						25 38 55.4 N 034 31 29.0 E					
RW15						25 34 14.7 N 034 34 29.7 E					
MA714						25 28 36.7 N 034 38 06.8 E					
MA715						25 31 38.4 N 034 43 50.7 E					



For Simulation Use Only
Not For Real Life

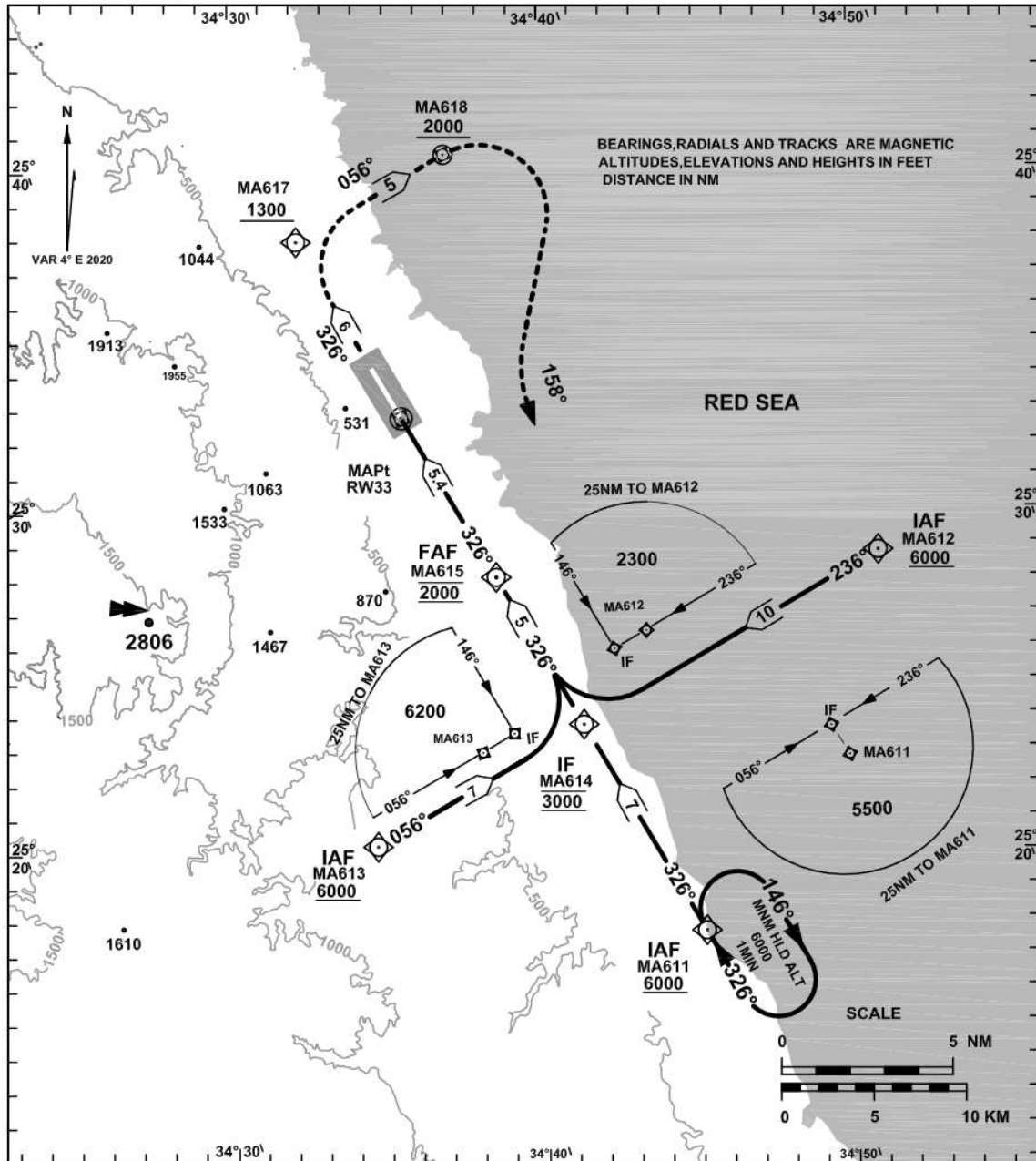
HEMA/RMF

**INSTRUMENT
APPROACH
CHART-ICAO**

AERODROME ELEV 251FT
HEIGHTS RELATED TO THR
RWY33 ELEV233FT

TWR & APP	121.0
EMERG	121.5
GND	121.9

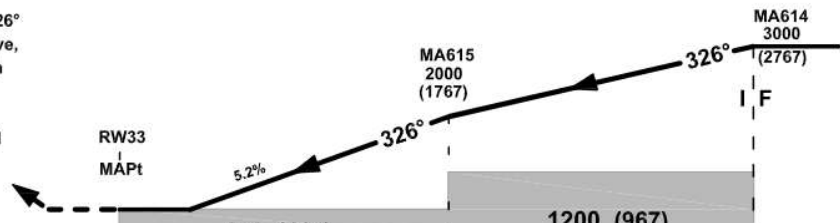
**MARSA ALAM / MARSA ALAM
RNP RWY 33**



TRANS LEVEL 110
TRANS ALT 9500

MISSED APCH

Climb straight ahead on track 326° to MA617 at ALT 1300FT or above, turn right on track 056° to reach MA618 at ALT 2000FT or above then turn right on track 158° to reach MA611 at ALT 6000FT and hold or as directed by ATC.



ELEV 233
THR RWY33

OCA(OCH)	A	B	C	D	E
LNAV	650 (417)				

GND speed - KT	70	90	100	120	140	160
Descent angle(3.00°)	372	478	531	637	743	850



For Simulation Use Only
Not For Real Life

HEMA/RMF

INSTRUMENT AD ELEV 251FT
APPROACH HEIGHTS RELATED TO
CHART-ICAO THR RWY33 ELEV 233FT

TWR & APP 121.0
EMERG 121.5
GND 121.9

MARSA ALAM/ **MARSA ALAM**
RNP RWY 33

TABLUAR DESCRIPTION

Serial Number	Path Descriptor	Waypoint Identifier	Fly-Over	Course °M(°T)	Magnetic Variation	Distance (NM)	Turn Direction	Altitude(ft)	Speed (Kts)	VPA/TCH	Navigation Specification
001	IF	MA611	-	-	-4	-	-	+6000	230	-	RNP APCH
002	TF	MA614	-	326(329.8)	-4	7	-	@3000	-	-	RNP APCH
003	IF	MA612	-	-	-4	-	-	+6000	-	-	RNP APCH
004	TF	MA614	-	236(239.9)	-4	10	-	@3000	-	-	RNP APCH
005	IF	MA613	-	-	-4	-	-	+6000	-	-	RNP APCH
006	TF	MA614	-	056(059.8)	-4	7	-	@3000	-	-	RNP APCH
007	TF	MA615	-	326(329.8)	-4	5	-	@2000	-	-	RNP APCH
008	TF	RW33	Y	326(329.8)	-4	5.4	-	@650	-	-3.0/50	RNP APCH
009	CF	MA617	-	326(329.8)	-4	6	-	+1300	-	-	RNP APCH
010	TF	MA618	Y	056(059.8)	-4	5	R	+2000	-	-	RNP APCH
011	TF	MA611	-	158(161.8)	-4	23.9	R	@6000	-	-	RNP APCH
012	HM	MA611	-	326(329.8)	-4	-	R	+6000	-	-	RNP APCH

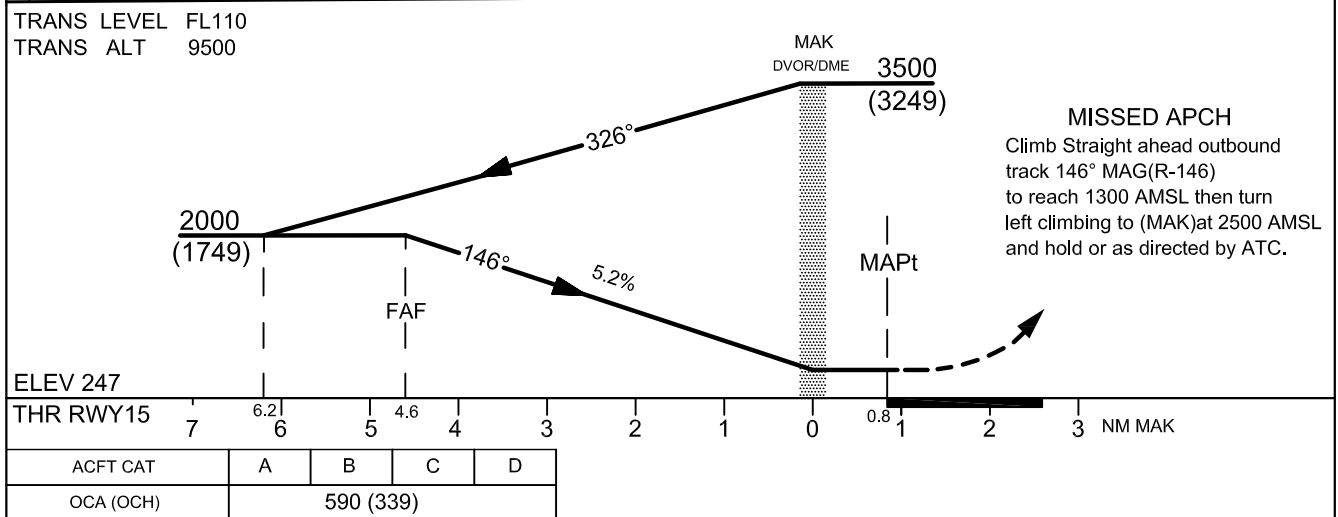
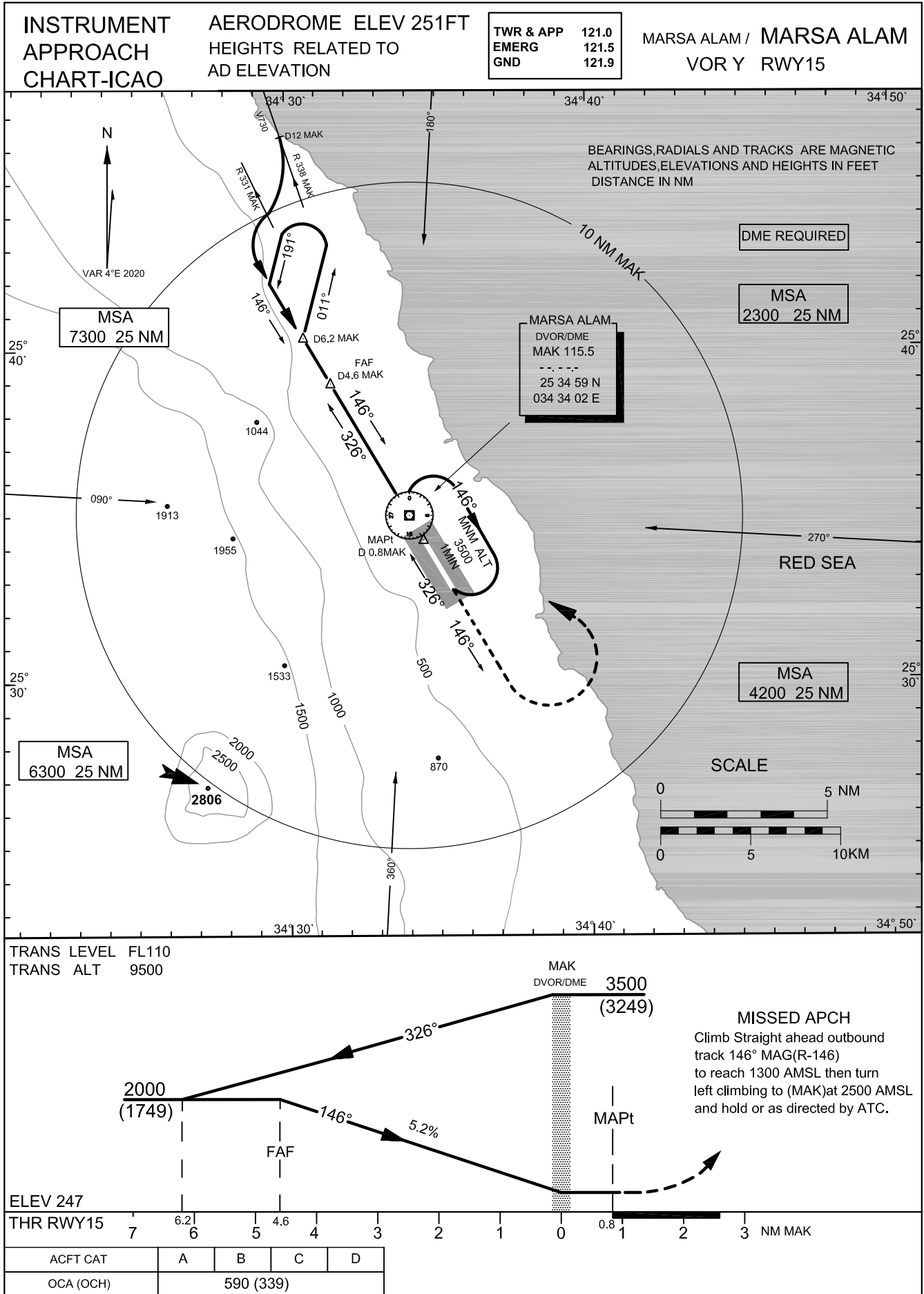
WAYPOINT LIST

Waypoint Identifier	Coordinates
MA611	25 17 38.9N 034 45 08.3 E
MA612	25 28 45.6N 034 50 48.1 E
MA613	25 20 11.0N 034 34 34.4 E
MA614	25 23 43.1N 034 41 15.1 E
MA615	25 28 03.1N 034 38 28.3 E
RW33	25 32 44.0N 034 35 28.0 E
MA617	25 37 55.9N 034 32 07.4 E
MA618	25 40 27.5N 034 36 54.2E



For Simulation Use Only
Not For Real Life

HEMA/RMF

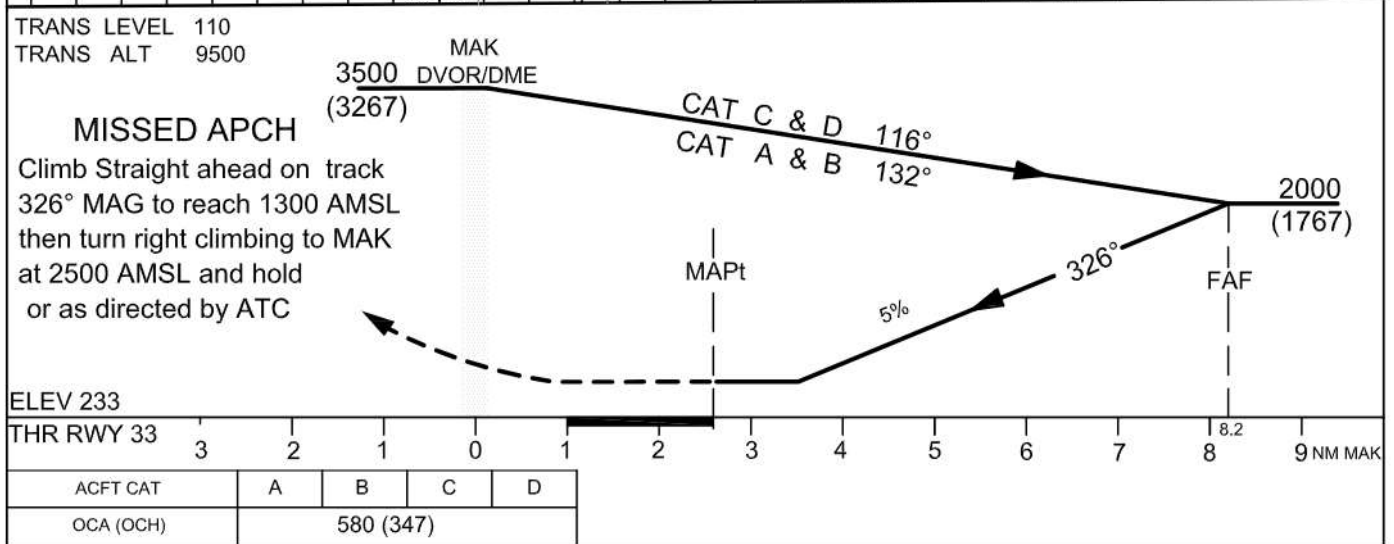
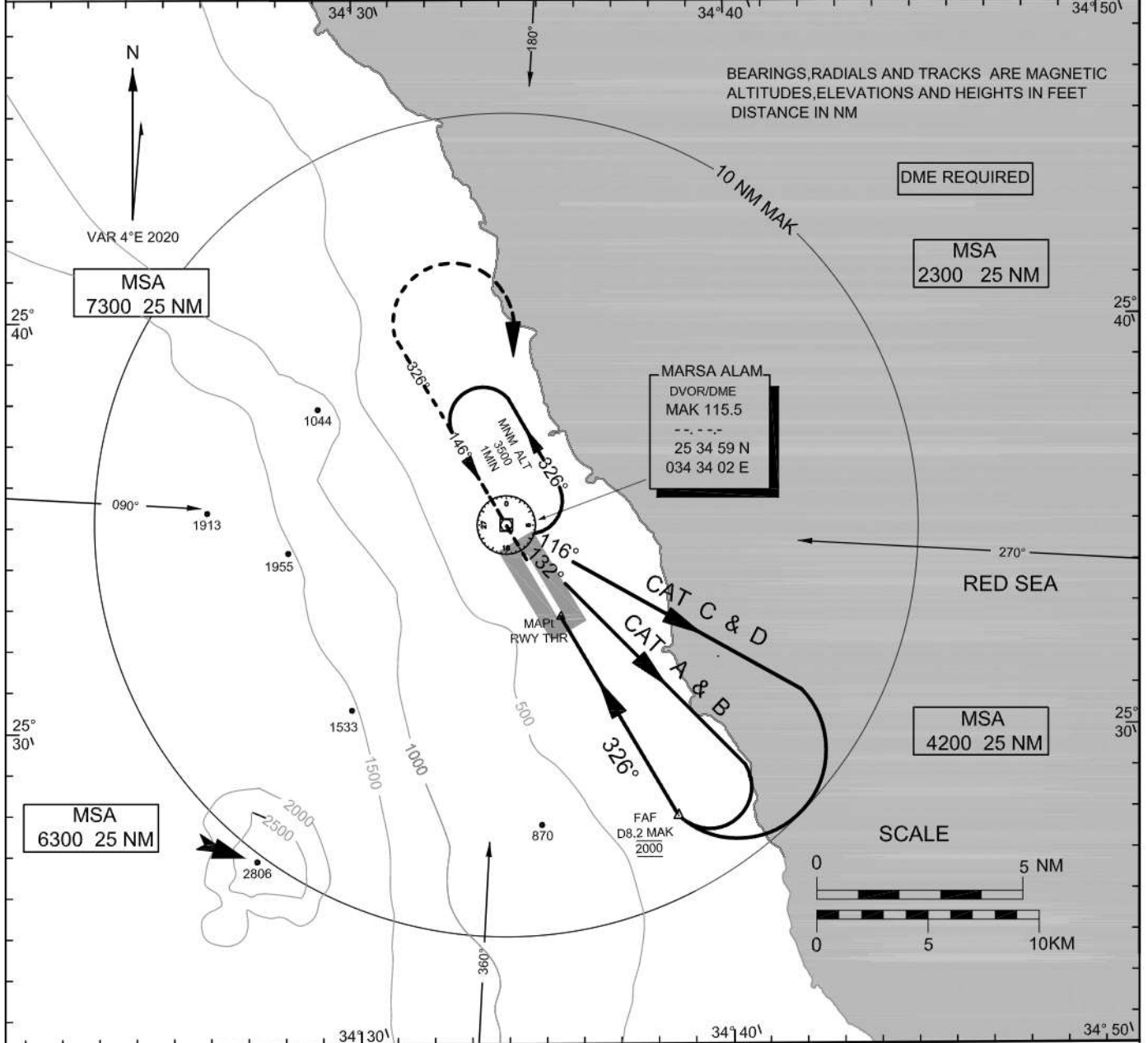




For Simulation Use Only
Not For Real Life

HEMA/RMF

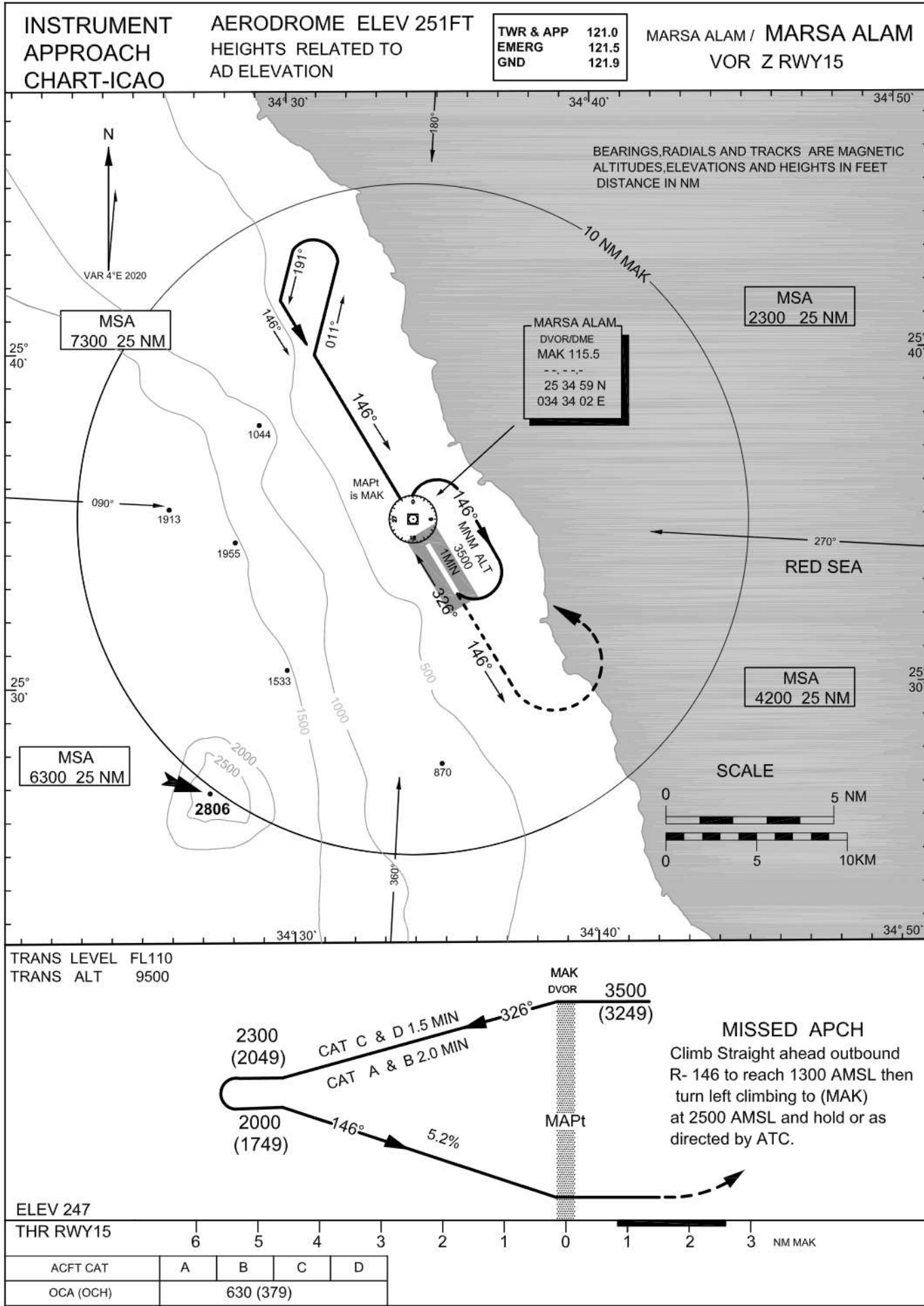
INSTRUMENT APPROACH CHART-ICAO **AERODROME ELEV 251FT** **TWR & APP 121.0** **MARSA ALAM / MARSA ALAM**
HEIGHTS RELATED TO **EMERG 121.5** **VOR Y RWY33**
THR RWY 33 ELEV 233FT **GND 121.9**





For Simulation Use Only
Not For Real Life

HEMA/RMF





For Simulation Use Only
Not For Real Life

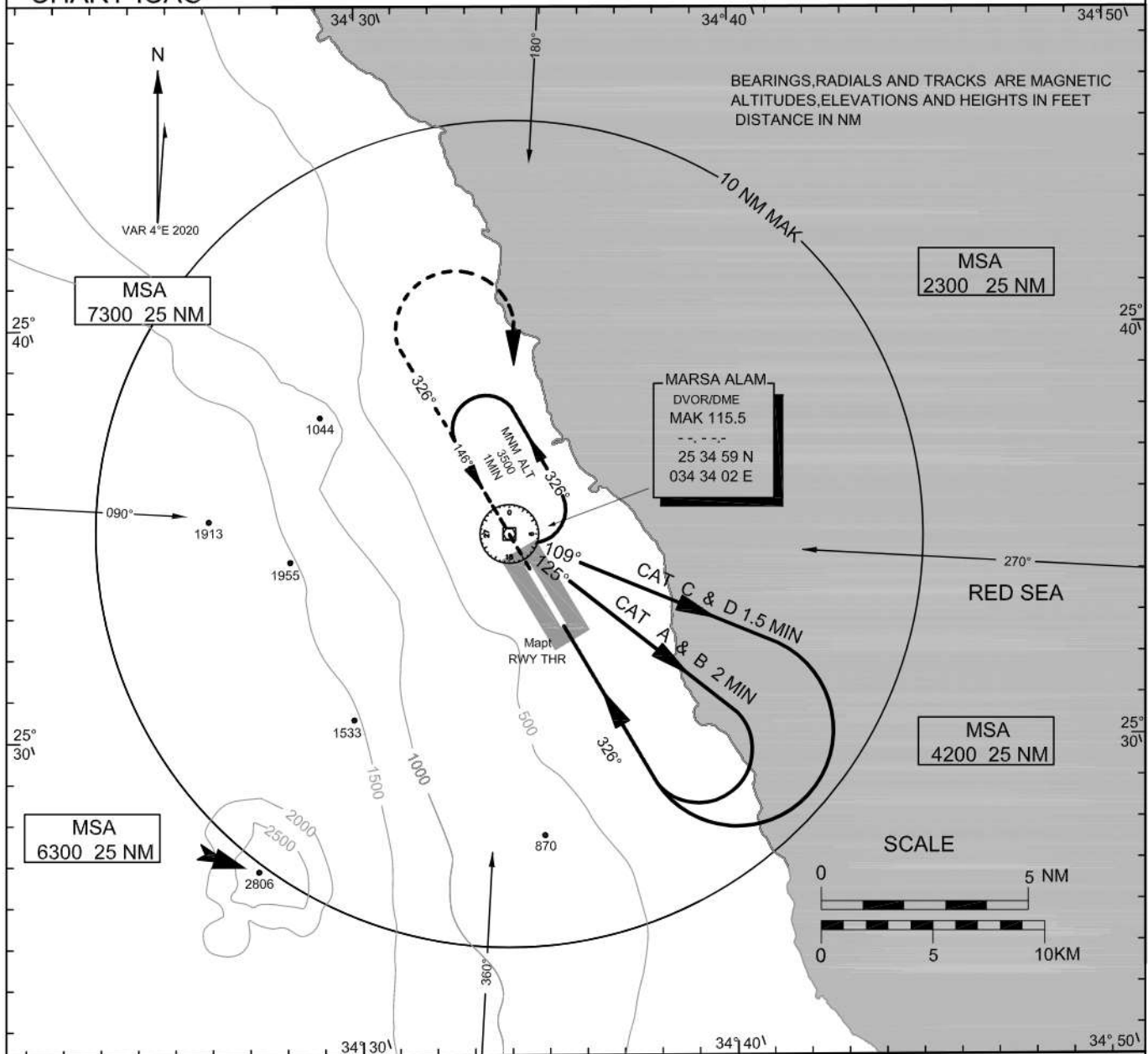
HEMA/RMF

**INSTRUMENT
APPROACH
CHART-ICAO**

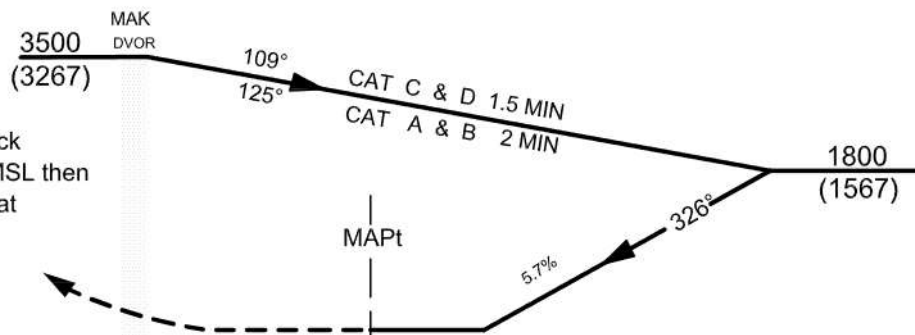
AERODROME ELEV 251FT
HEIGHTS RELATED TO
THR RWY 33 ELEV 233FT

TWR & APP	121.0
EMERG	121.5
GND	121.9

MARSA ALAM / MARSA ALAM
VOR Z RWY33



TRANS LEVEL 110
TRANS ALT 9500



MISSED APCH

Climb Straight ahead on track
326° MAG to reach 1300 AMSL then
turn right climbing to (MAK) at
2500 AMSL and hold or as
directed by ATC

ELEV 233

THR RWY 33

ACFT CAT	A	B	C	D
OCA (OCH)	630 (397)			

3 2 1 0 1 2 3 4 5 6 7 8 NM