



**For Simulation Use Only  
Not For Real Life**

**HESC/SKV**

**AERODROME CHART - ICAO** 28 41 07N 034 03 45E **ELEV 4368FT**

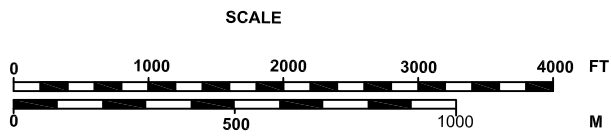
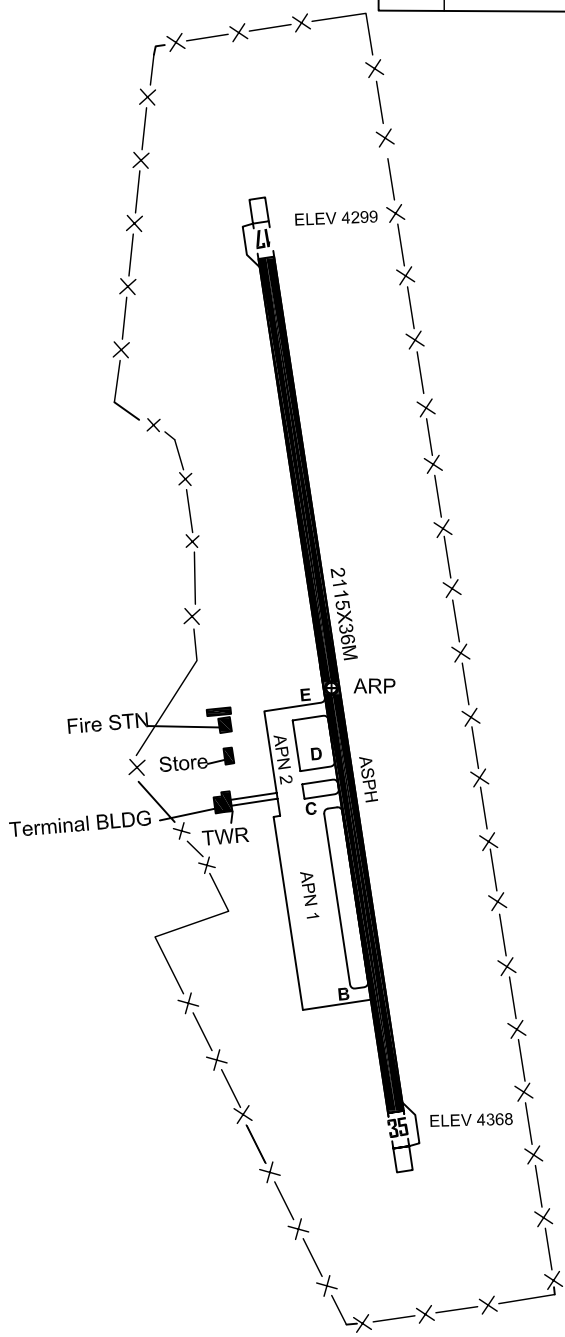
<b>TWR</b>	<b>121.9</b>	<b>122.8</b>
<b>EMERG</b>	<b>121.5</b>	

**ST.CATHERINE / ST.CATHERINE**

BEARINGS ARE MAGNETIC  
ELEVATIONS IN FEET  
DIMENSIONS IN METRES

RWY	MAG DIRECTION	THR	STRENGTH	GUND
17	168°	28 41 41N 034 03 40E	RWY & TWY PCN 40/F/B/W/U APN 1	60
35	348°	28 40 33N 034 03 51E	PCN 40/F/B/W/U APN 2 PCN 40/R/B/W/U	60

**N**  
↑  
VAR 4° E 2020



4593



For Simulation Use Only  
Not For Real life

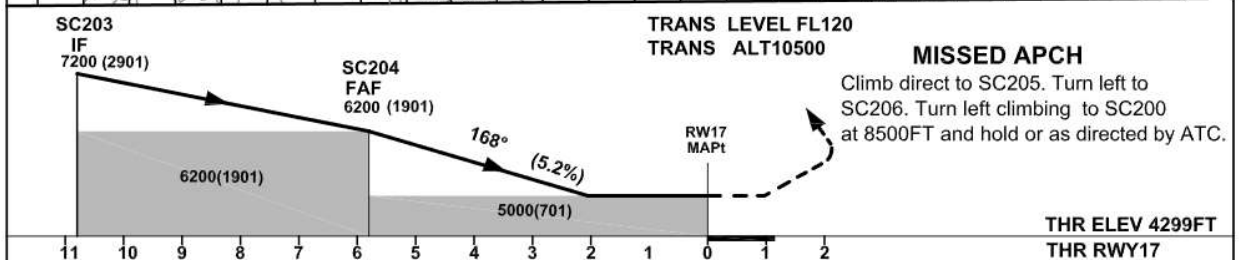
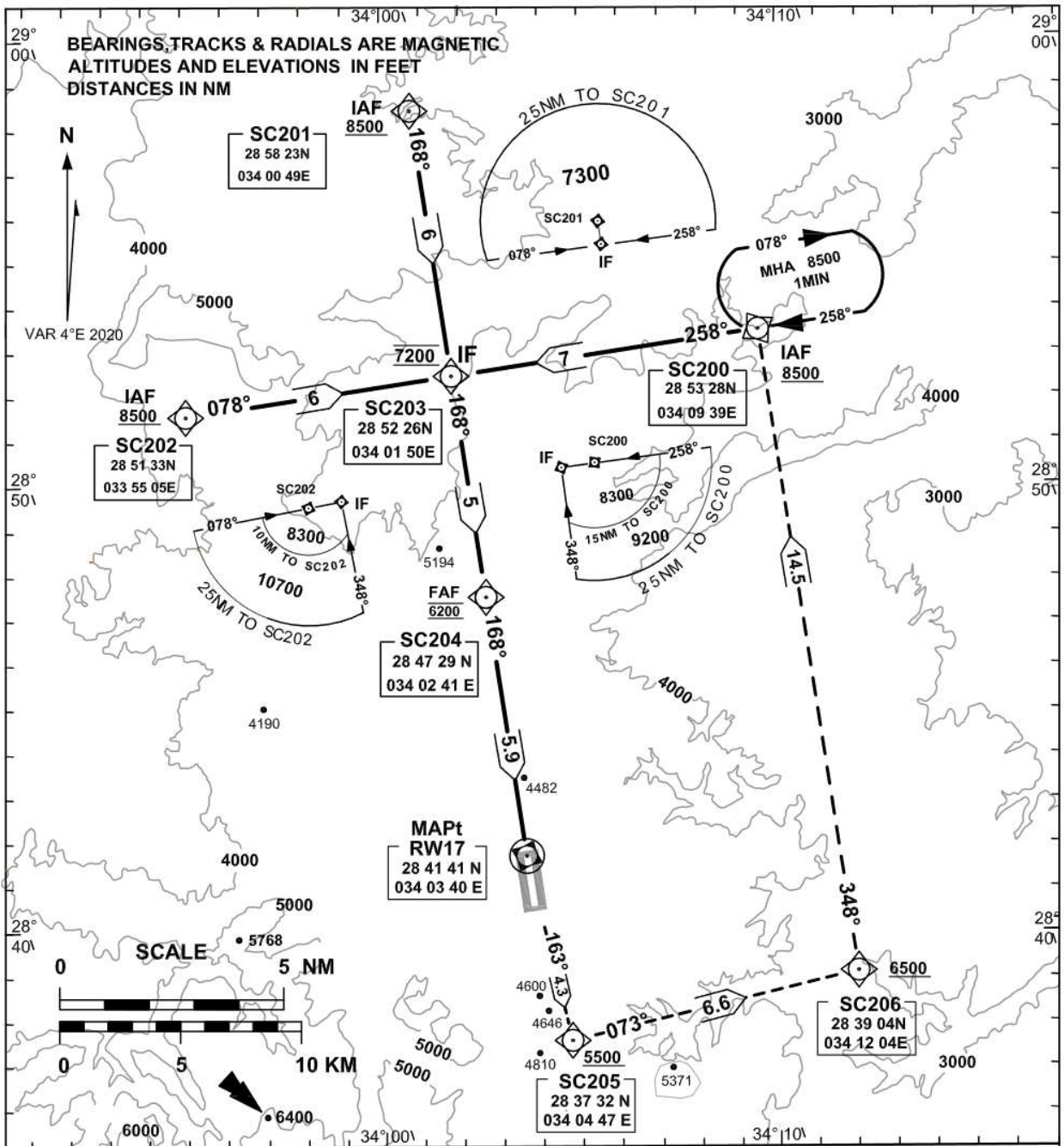
HESC/SKV

**INSTRUMENT  
APPROACH  
CHART-ICAO**

**AD ELEV 4368FT  
HEIGHTS RELATED TO  
THR RWY17 ELEV 4299FT**

**ST.CATHERINE / ST.CATHERINE  
RNP RWY 17  
CAT A&B**

TWR	121.9	122.8
EMERG	121.5	



OCA(OCH)	A	B		GND speed - KT	70	90	100	120	140	160
LNAV	5000(701)			Descent angle(3.00°)	372	478	531	637	743	850



For Simulation Use Only  
Not For Real life

HESC/SKV

<b>Instrument Approach CHART-ICAO</b>	AD ELEV 4368ft HEIGHTS RELATED TO THR 17 ELEV 4299FT	TWR 121.9 122.8 EMERG 121.5	<b>ST.CATHERINE / ST.CATHERINE RNP RWY 17 CAT A&amp;B</b>
---	--	--------------------------------	---

**TABLUAR DESCRIPTION**

Serial Number	Path Descriptor	Waypoint Identifier	Fly-Over	Course °M(°T)	Magnetic Variation	Distance (NM)	Turn Direction	Altitude(ft)	Speed (Kts)	VPA / TCH	Navigation Specification
001	IF	SC200	-	-	-4	-	-	+8500	-	-	RNP APCH
002	TF	SC203	-	258(261.5)	-4	7	L	@7200	-	-	RNP APCH
003	IF	SC201	-	-	-4	-	-	+8500	-	-	RNP APCH
004	TF	SC203	-	168(171.5)	-4	6	-	@7200	-	-	RNP APCH
005	IF	SC202	-	-	-4	-	-	+8500	-	-	RNP APCH
006	TF	SC203	-	078(081.5)	-4	6	R	@7200	-	-	RNP APCH
007	TF	SC204	-	168(171.5)	-4	5	-	@6200	-	-	RNP APCH
008	TF	RW17	Y	168(171.5)	-4	5.9	-	-	-	-3.0 /50	RNP APCH
009	TF	SC205	-	163(166.5)	-4	4.3	-	+5500	-	-	RNP APCH
010	TF	SC206	-	073(076.5)	-4	6.6	L	+6500	-	-	RNP APCH
011	TF	SC200	-	348(351.5)	-4	14.5	L	@8500	-	-	RNP APCH
012	HM	SC200	-	258(261.5)	-4	1 MIN	R	+8500	-	-	RNP APCH

**Waypoint Coordinates**

Waypoint Identifier	Coordinates
SC200	28° 53' 27.88"N 034° 09' 38.59"E
SC201	28° 58' 23.46"N 034° 00' 49.36"E
SC202	28° 51' 32.81"N 033° 55' 04.51"E
SC203	28° 52' 26.41"N 034° 01' 50.11"E
SC204	28° 47' 28.87"N 034° 02' 40.65"E
RW17	28° 41' 40.56"N 034° 03' 39.73"E
SC205	28° 37' 32.03"N 034° 04' 47.35"E
SC206	28° 39' 04.25"N 034° 12' 04.03"E

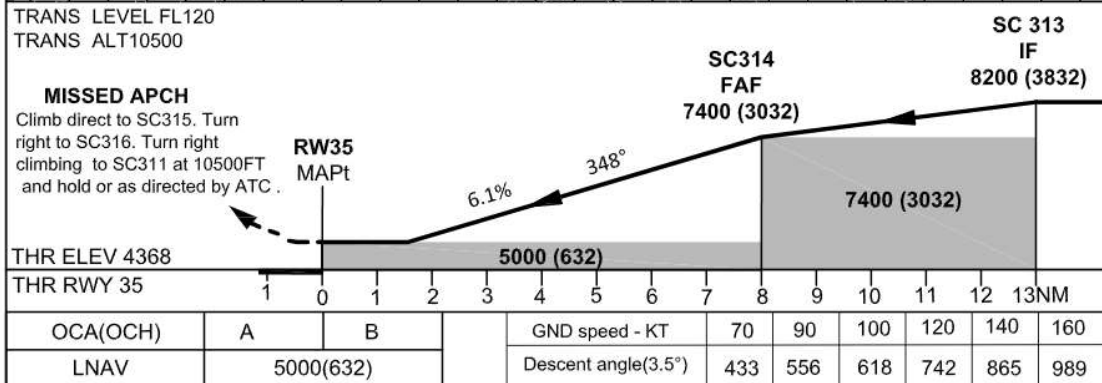
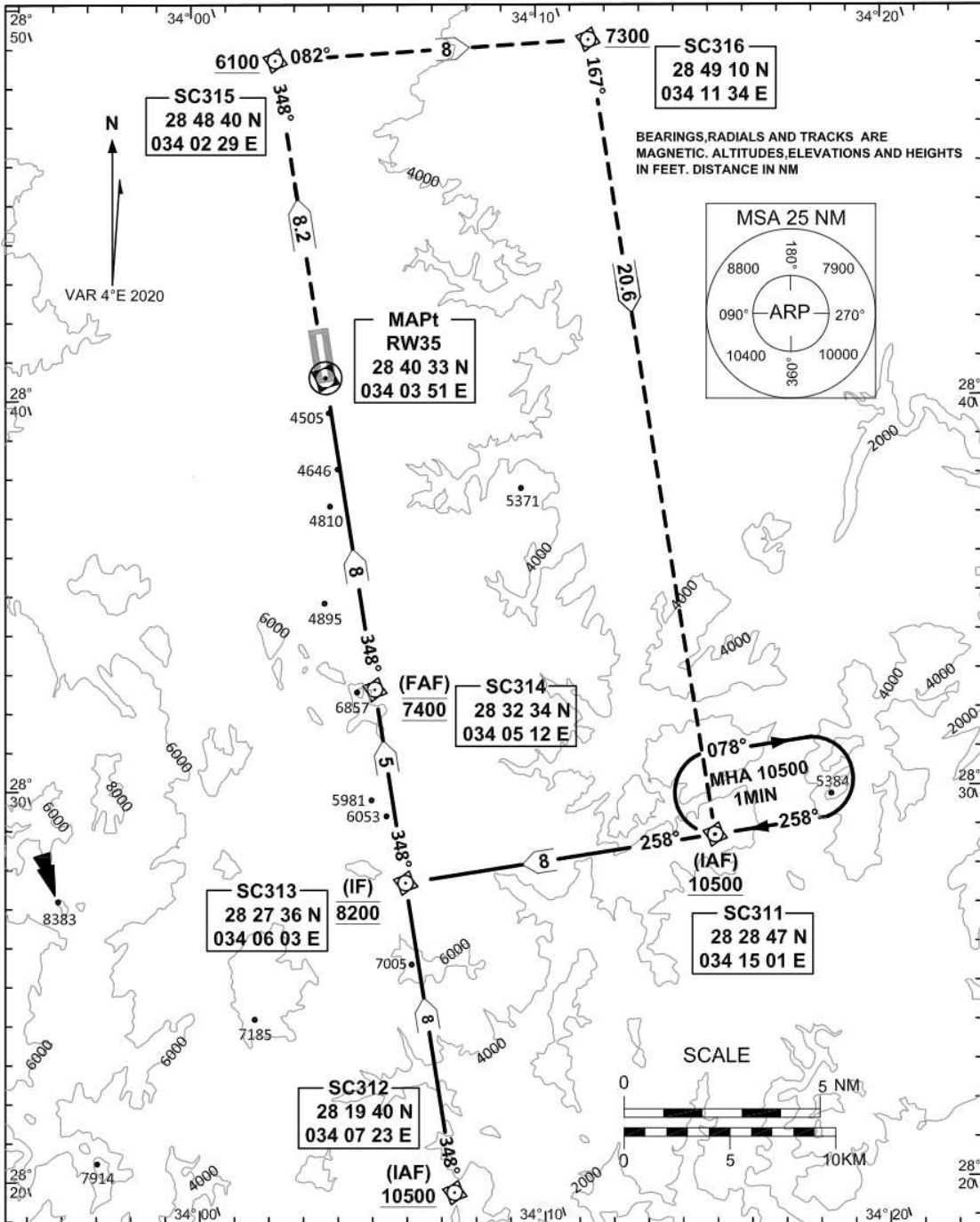
---



For Simulation Use Only  
Not For Real life

HESC/SKV

**INSTRUMENT APPROACH CHART-ICAO**    **AD ELEV 4368FT**    **ST.CATHERINE / ST.CATHERINE**  
 HEIGHTS RELATED TO AD ELEV    **TWR 121.9 122.8**    **RNP RWY 35**  
**EMERG 121.5**    **CAT A & B**





For Simulation Use Only  
Not For Real life

HESC/SKV

<b>Instrument Approach CHART-ICAO</b>	AD ELEV 4368FT HEIGHTS RELATED TO AD ELEV	TWR 121.9 122.8 EMERG 121.5	<b>ST.CATHERINE / ST.CATHERINE RNP RWY 35 CAT A &amp; B</b>
---	---	--------------------------------	---

**TABLUAR DESCRIPTION**

Serial Number	Path Descriptor	Waypoint Identifier	Fly-Over	Course °M(°T)	Magnetic Variation	Distance (NM)	Turn Direction	Altitude(ft)	Speed (Kts)	VPA/TCH	Navigation Specification
001	IF	SC311	-	-	-4		-	+10500	-	-	RNP APCH
002	TF	SC313	-	258(261.5)	-4	8	R	@8200	-	-	RNP APCH
003	IF	SC312	-	-	-4		-	+10500	-	-	RNP APCH
004	TF	SC313	-	348(351.5)	-4	8	-	@8200	-	-	RNP APCH
005	TF	SC314	-	348(351.5)	-4	5	-	@7400	-	-	RNP APCH
006	TF	RW35	Y	348(351.5)	-4	8	-	-	-	-3.5/50	RNP APCH
007	TF	SC315	-	348(351.5)	-4	8.2	-	+6100	-	-	RNP APCH
008	TF	SC316	-	082(86.4)	-4	8	R	+7300	-	-	RNP APCH
009	TF	SC311	-	167(171.4)	-4	20.6	R	@10500	-	-	RNP APCH
010	HM	SC311	-	258(261.5)	-4	1 MIN	R	+10500	-	-	RNP APCH

**Waypoint Coordinates**

Waypoint Identifier	Coordinates
SC311	28° 28' 46.6"N 034° 15' 01.4"E
SC312	28° 19' 39.8"N 034° 07' 22.8"E
SC313	28° 27' 35.9"N 034° 06' 02.6"E
SC314	28° 32' 33.5"N 034° 05' 12.3"E
RW35	28° 40' 32.6"N 034° 03' 51.2"E
SC315	28° 48' 40.4"N 034° 02' 28.5"E
SC316	28° 49' 09.5"N 034° 11' 34.1"E