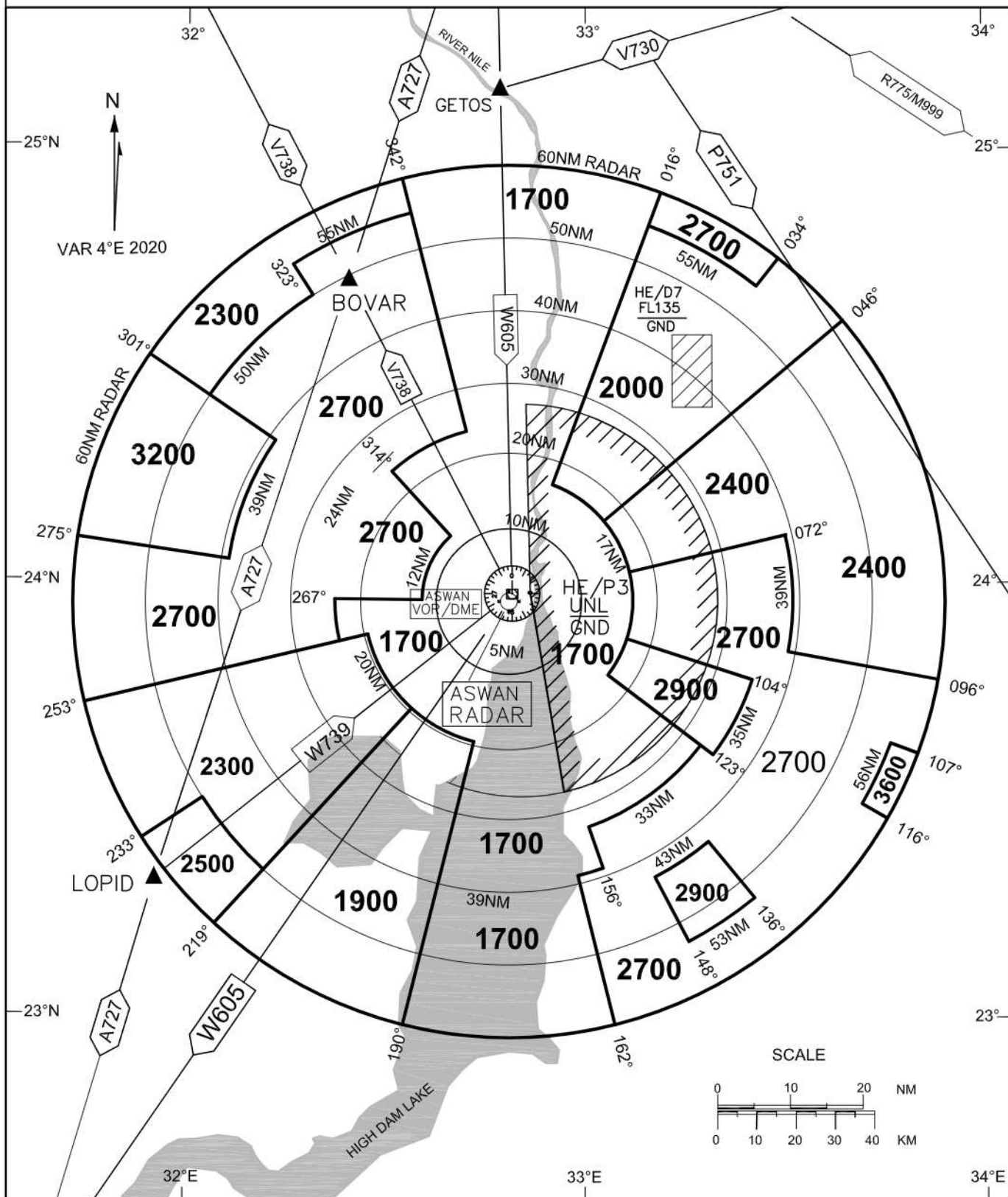




For Simulation Use Only  
Not For Real life

HESN/ASW

# ASWAN MINIMUM RADAR VECTORING ALTITUDE CHART





For Simulation Use Only  
Not For Real life

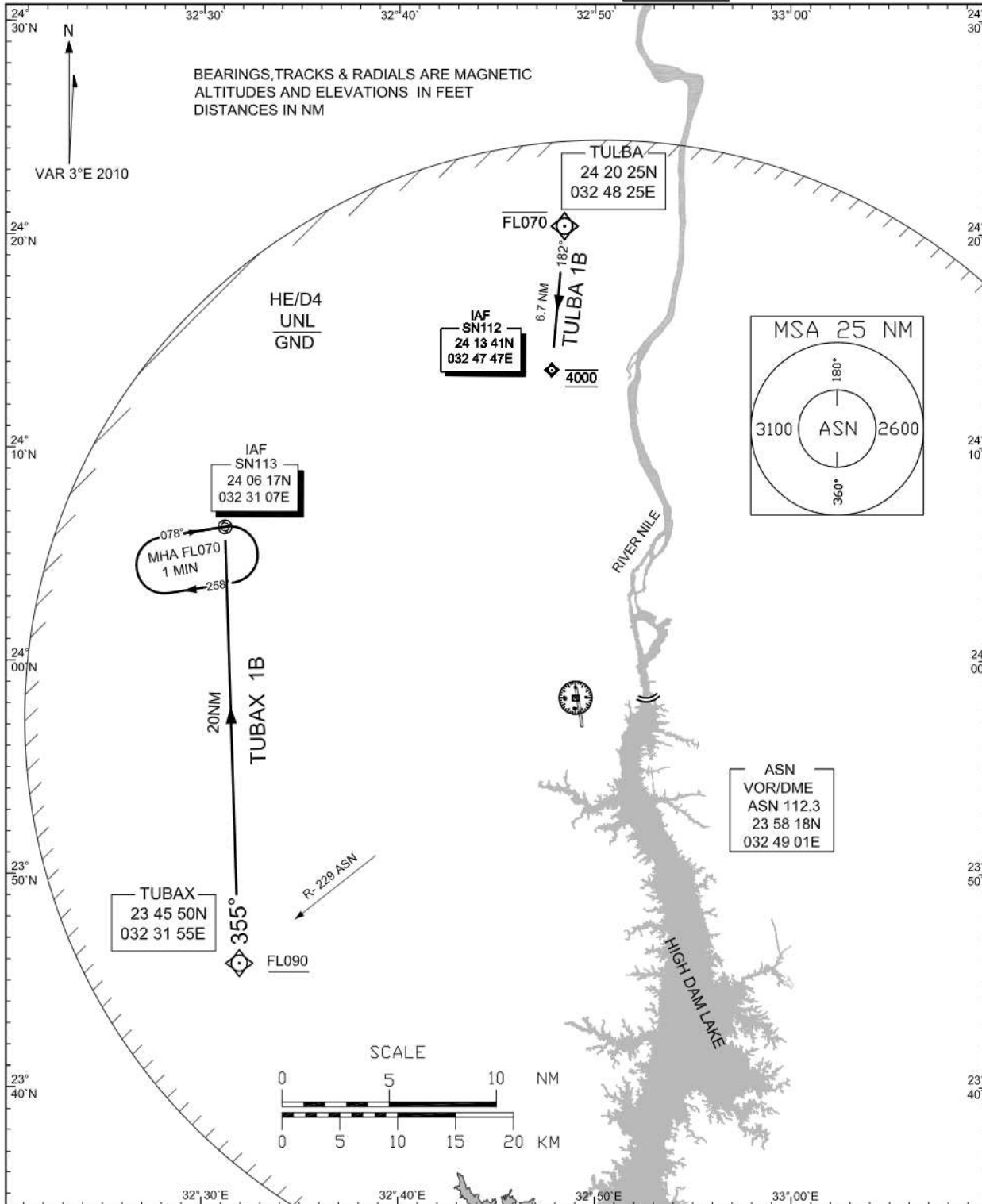
HESN/ASW

STANDARD ARRIVAL CHART-  
INSTRUMENT (STAR)-ICAO

TRANSITION ALTITUDE  
4000FT

TWR 118.3  
Fire 121.9  
RADAR 120.3  
EMERG 121.5

ASWAN / ASWAN  
RNAV (VOR/DME or GNSS)  
RWY 17





For Simulation Use Only  
Not For Real life

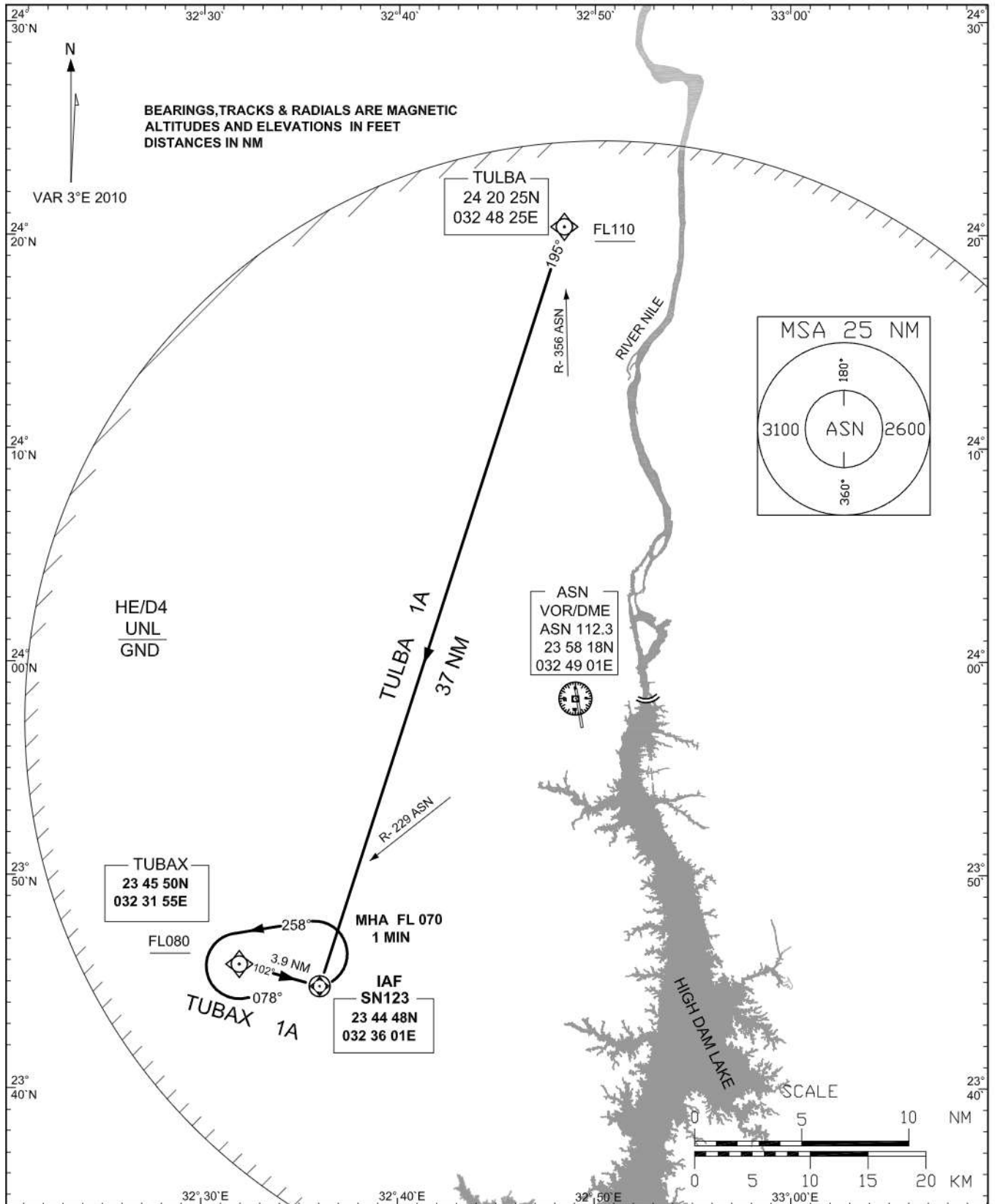
HESN/ASW

**STANDARD ARRIVAL CHART-  
INSTRUMENT (STAR)-ICAO**

TRANSITION ALTITUDE  
4000FT

TWR 118.3  
Fire 121.9  
RADAR 120.3  
EMERG 121.5

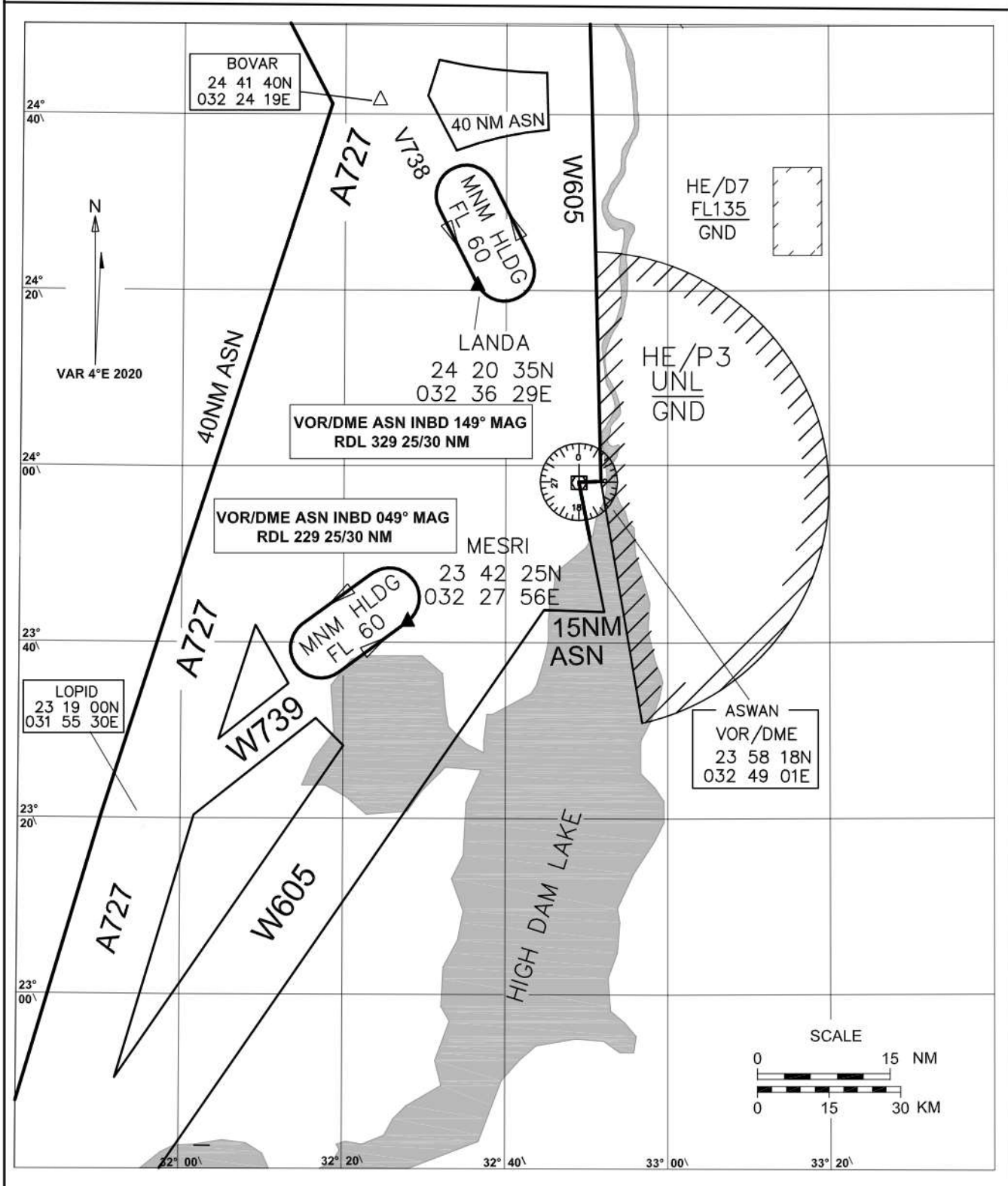
ASWAN / **ASWAN**  
**RNAV** (VOR/DME or GNSS)  
RWY 35



STAR	AWY	ROUTING
TUBAX 1A	W 739	- TUBAX ( FL080+), SN123 (FL070,Kt200) .
TULBA 1A	W 605	- TULBA (FL110+), SN123 (FL070,Kt200).



### ASWAN APPROACH OUTER FIX HOLDING PROCEDURES



**Outer Fixes Holding**  
**Vectors to LANDA & MESRI will be provided by ATC**  
**when excessive holding are expected**



For Simulation Use Only  
Not For Real life

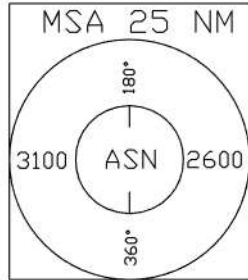
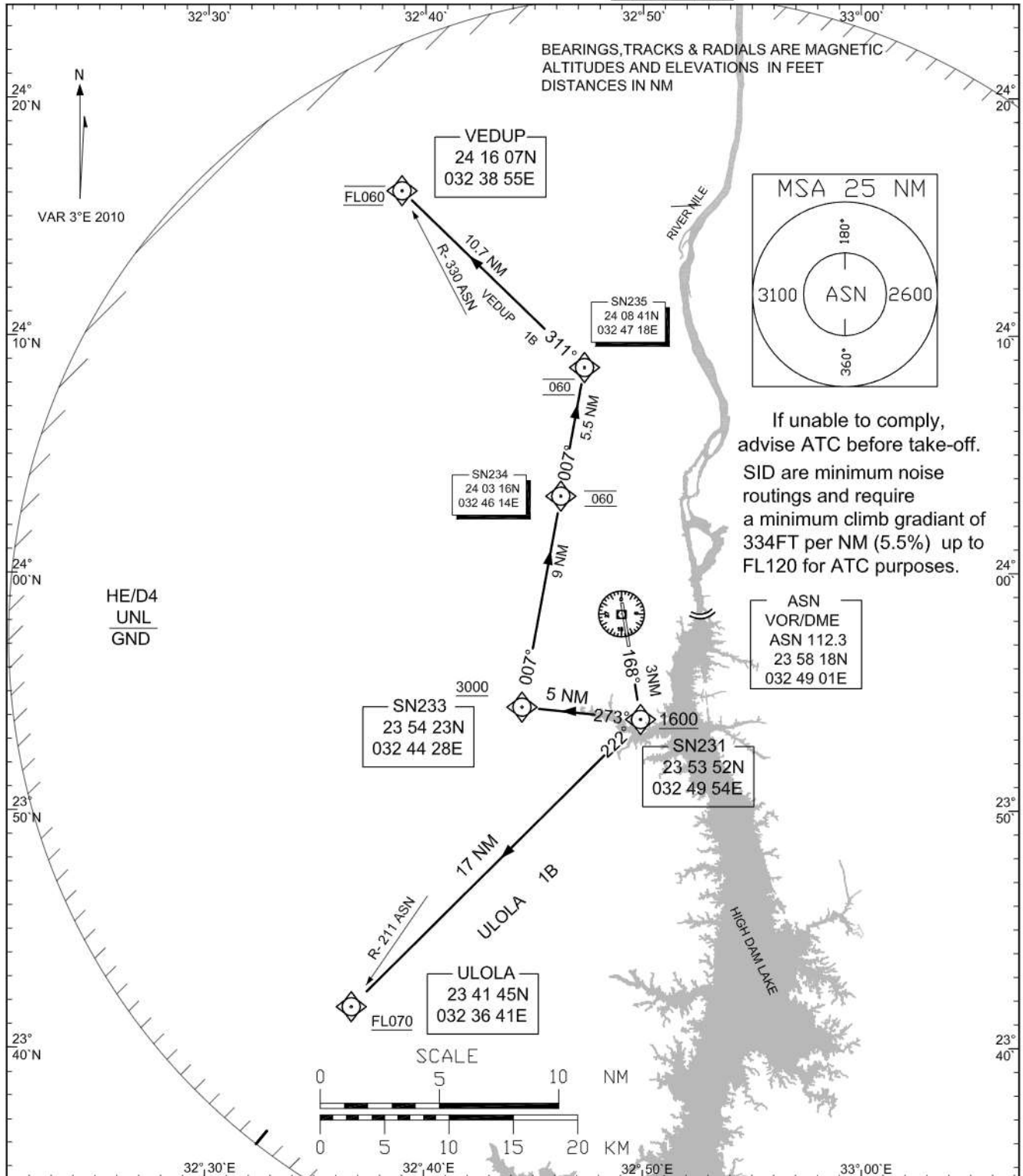
HESN/ASW

STANDARD DEPARTURE CHART-  
INSTRUMENT (SID)-ICAO

TRANSITION ALTITUDE  
4000FT

TWR 118.3  
Fire 121.9  
RADAR 120.3  
EMERG 121.5

ASWAN / ASWAN  
RNAV (VOR/DME or GNSS)  
RWY 17



If unable to comply,  
advise ATC before take-off.  
SID are minimum noise  
routings and require  
a minimum climb gradient of  
334FT per NM (5.5%) up to  
FL120 for ATC purposes.

ASN  
VOR/DME  
ASN 112.3  
23 58 18N  
032 49 01E

Initial Climb  
Climb on track 168° to cross SN231 (1600FT+), then turn right to :

SID	AWY	ROUTING
ULOLA 1B	W 605	- ULOLA (FL070+).
VEDUP 1B	V 738	- SN233 (3000FT+), SN234( FL060), SN235(FL060), VEDUP (FL060).



For Simulation Use Only  
Not For Real life

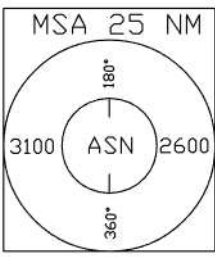
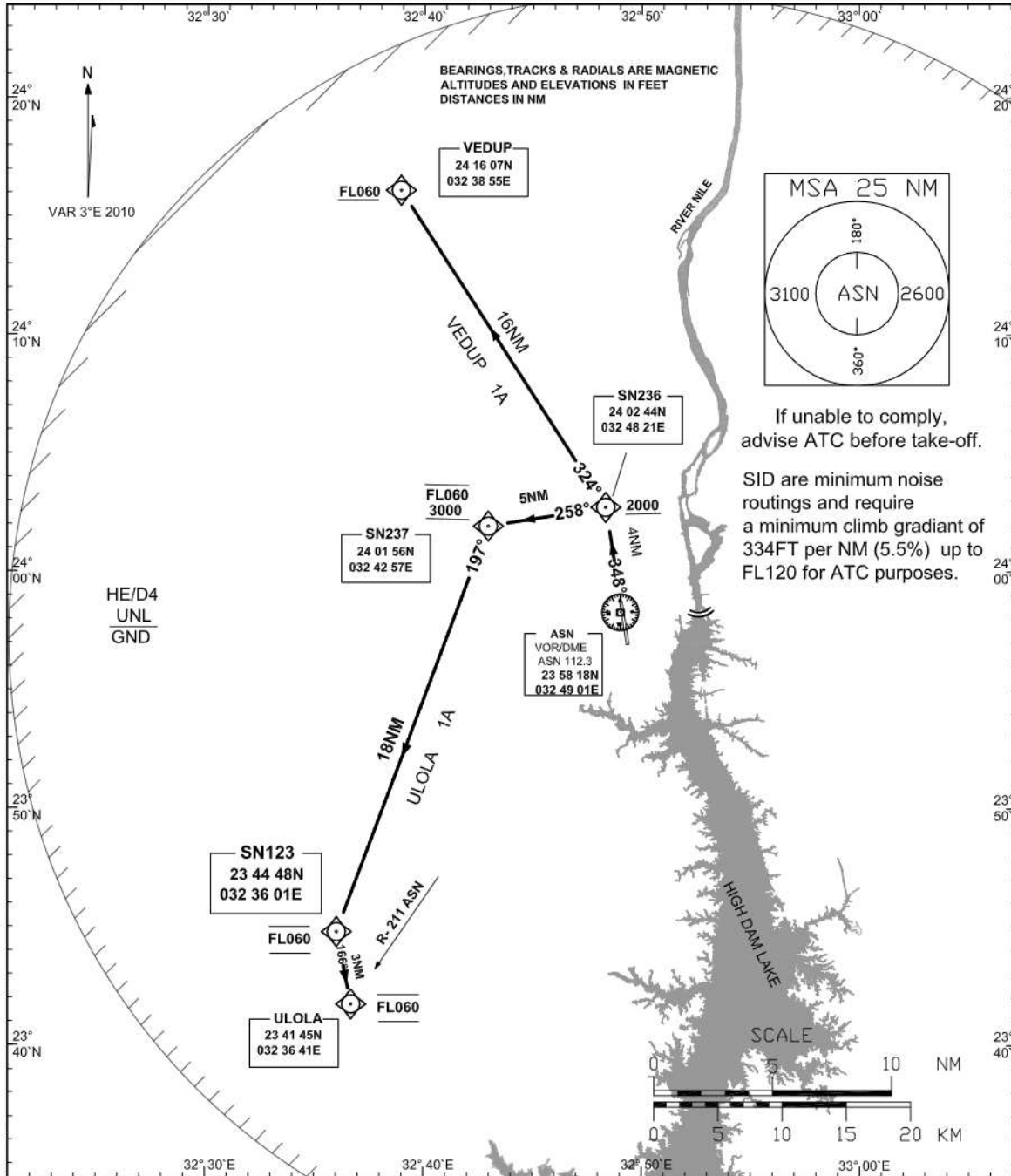
HESN/ASW

**STANDARD DEPARTURE CHART-  
INSTRUMENT (SID)-ICAO**

TRANSITION ALTITUDE  
4000FT

TWR 118.3  
Fire 121.9  
RADAR 120.3  
EMERG 121.5

ASWAN / **ASWAN**  
**RNAV** (VOR/DME or GNSS)  
**RWY 35**



If unable to comply,  
advise ATC before take-off.

SID are minimum noise  
routings and require  
a minimum climb gradient of  
334FT per NM (5.5%) up to  
FL120 for ATC purposes.

Initial Climb  
Climb on track 348° to cross SN236 (2000FT+), then to :

SID	AWY	ROUTING
ULOLA 1A	W 605	- SN237 ( 3000 - FL060),SN123 ( FL060),ULOLA (FL060).
VEDUP 1A	V 738	- VEDUP (FL060+) .



For Simulation Use Only  
Not For Real Life

HESN/ASW

**AERODROME CHART - ICAO**

23 57 52N  
032 49 12E

ELEV 662FT

TWR	118.3
GND	121.9
RADAR	120.3
EMERG	121.5

ASWAN/**ASWAN**

BEARINGS ARE MAGNETIC  
ELEVATIONS IN FEET  
DIMENSIONS IN METRES



The separation DIST BTN the CL of TWY and the RCL is less than the appropriate dimension: 147 M

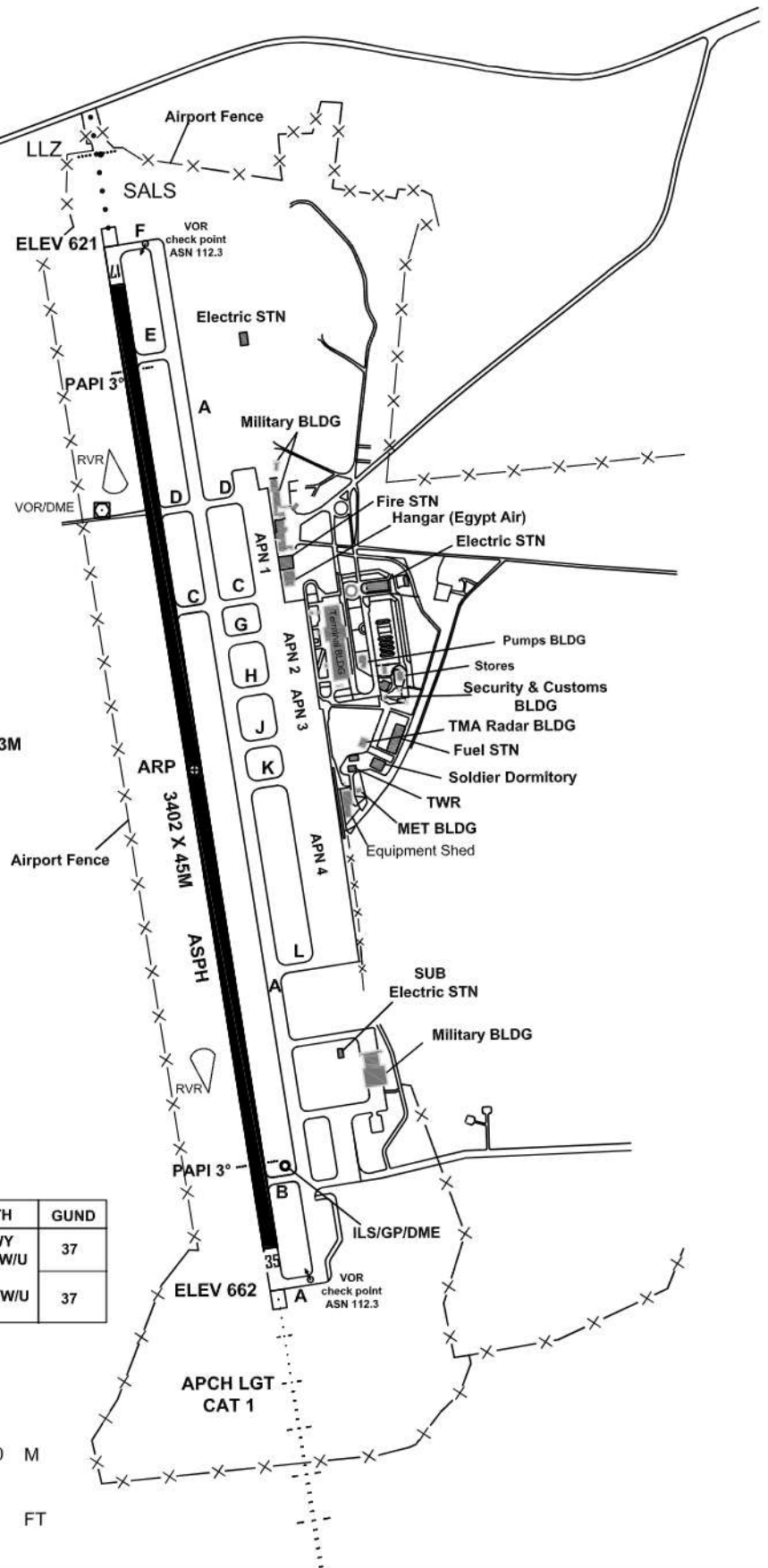
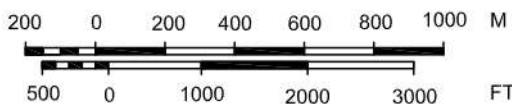
TWY A 45M EXC first portion FM RWY 35 is 23M  
TWY H, G 30M  
TWY C, J, K & L 25M  
TWY B, D, E & F 23M

TWY F used only for ACFT  
wing span less than 36M

APCH Radar Antenna

RWY	MAG DIRECTION	THR	STRENGTH	GUND
17	167°	23 58 46N 032 49 02E	RWY & TWY PCN 60/F/B/W/U	37
35	347°	23 56 57N 032 49 21E	APN PCN 60/R/B/W/U	37

SCALE





For Simulation Use Only  
Not For Real Life

HESN/ASW

**AIRCRAFT PARKING/  
DOCKING CHART- ICAO**

APN ELEV 638 FT

TWR 118.3  
GND 121.9  
RADAR 120.3  
EMERG 121.5

ASWAN/**ASWAN**

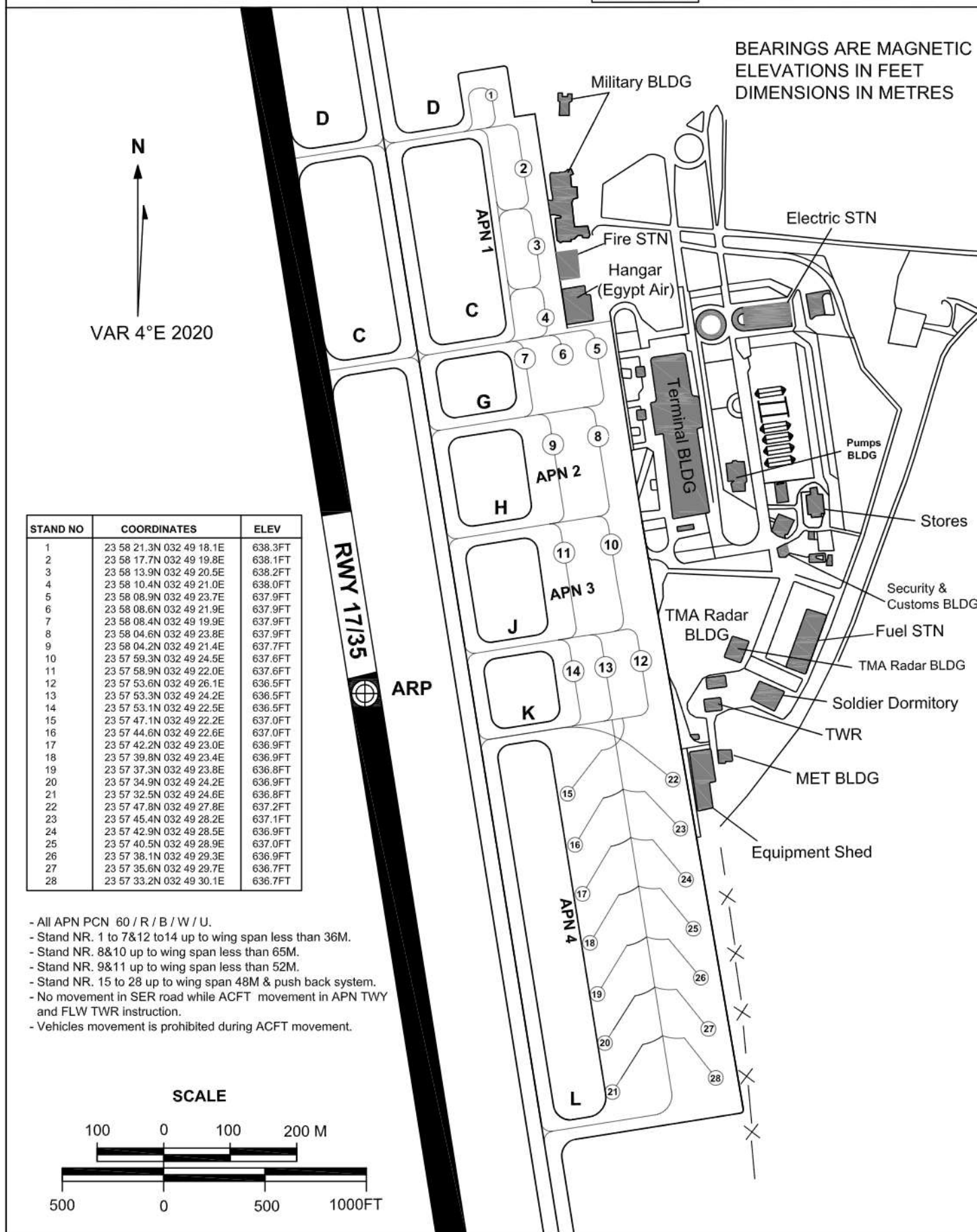
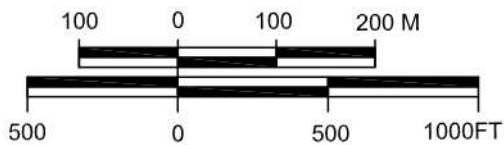
BEARINGS ARE MAGNETIC  
ELEVATIONS IN FEET  
DIMENSIONS IN METRES

N  
↑  
VAR 4°E 2020

STAND NO	COORDINATES	ELEV
1	23 58 21.3N 032 49 18.1E	638.3FT
2	23 58 17.7N 032 49 19.8E	638.1FT
3	23 58 13.9N 032 49 20.5E	638.2FT
4	23 58 10.4N 032 49 21.0E	638.0FT
5	23 58 08.9N 032 49 23.7E	637.9FT
6	23 58 08.6N 032 49 21.9E	637.9FT
7	23 58 08.4N 032 49 19.9E	637.9FT
8	23 58 04.6N 032 49 23.8E	637.9FT
9	23 58 04.2N 032 49 21.4E	637.7FT
10	23 57 59.3N 032 49 24.5E	637.6FT
11	23 57 58.9N 032 49 22.0E	637.6FT
12	23 57 53.6N 032 49 26.1E	636.5FT
13	23 57 53.3N 032 49 24.2E	636.5FT
14	23 57 53.1N 032 49 22.5E	636.5FT
15	23 57 47.1N 032 49 22.2E	637.0FT
16	23 57 44.6N 032 49 22.6E	637.0FT
17	23 57 42.2N 032 49 23.0E	636.9FT
18	23 57 39.8N 032 49 23.4E	636.9FT
19	23 57 37.3N 032 49 23.8E	636.8FT
20	23 57 34.9N 032 49 24.2E	636.9FT
21	23 57 32.5N 032 49 24.6E	636.8FT
22	23 57 47.8N 032 49 27.8E	637.2FT
23	23 57 45.4N 032 49 28.2E	637.1FT
24	23 57 42.9N 032 49 28.5E	636.9FT
25	23 57 40.5N 032 49 28.9E	637.0FT
26	23 57 38.1N 032 49 29.3E	636.9FT
27	23 57 35.6N 032 49 29.7E	636.7FT
28	23 57 33.2N 032 49 30.1E	636.7FT

- All APN PCN 60 / R / B / W / U.
- Stand NR. 1 to 7&12 to 14 up to wing span less than 36M.
- Stand NR. 8&10 up to wing span less than 65M.
- Stand NR. 9&11 up to wing span less than 52M.
- Stand NR. 15 to 28 up to wing span 48M & push back system.
- No movement in SER road while ACFT movement in APN TWY and FLW TWR instruction.
- Vehicles movement is prohibited during ACFT movement.

**SCALE**







For Simulation Use Only  
Not For Real Life

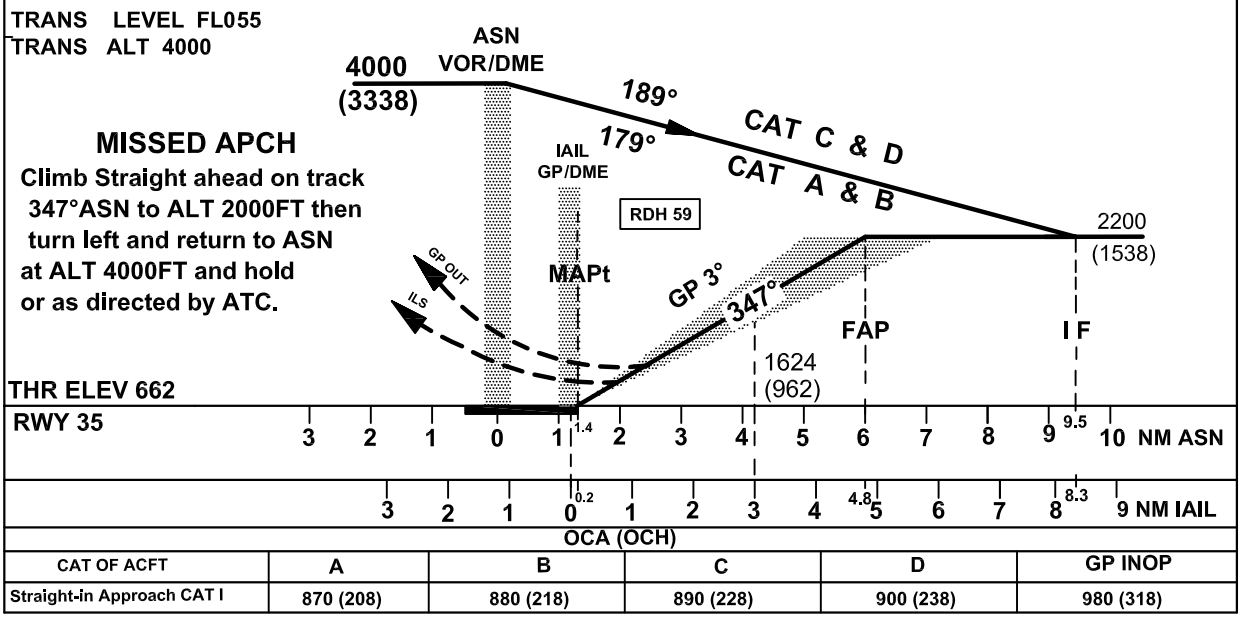
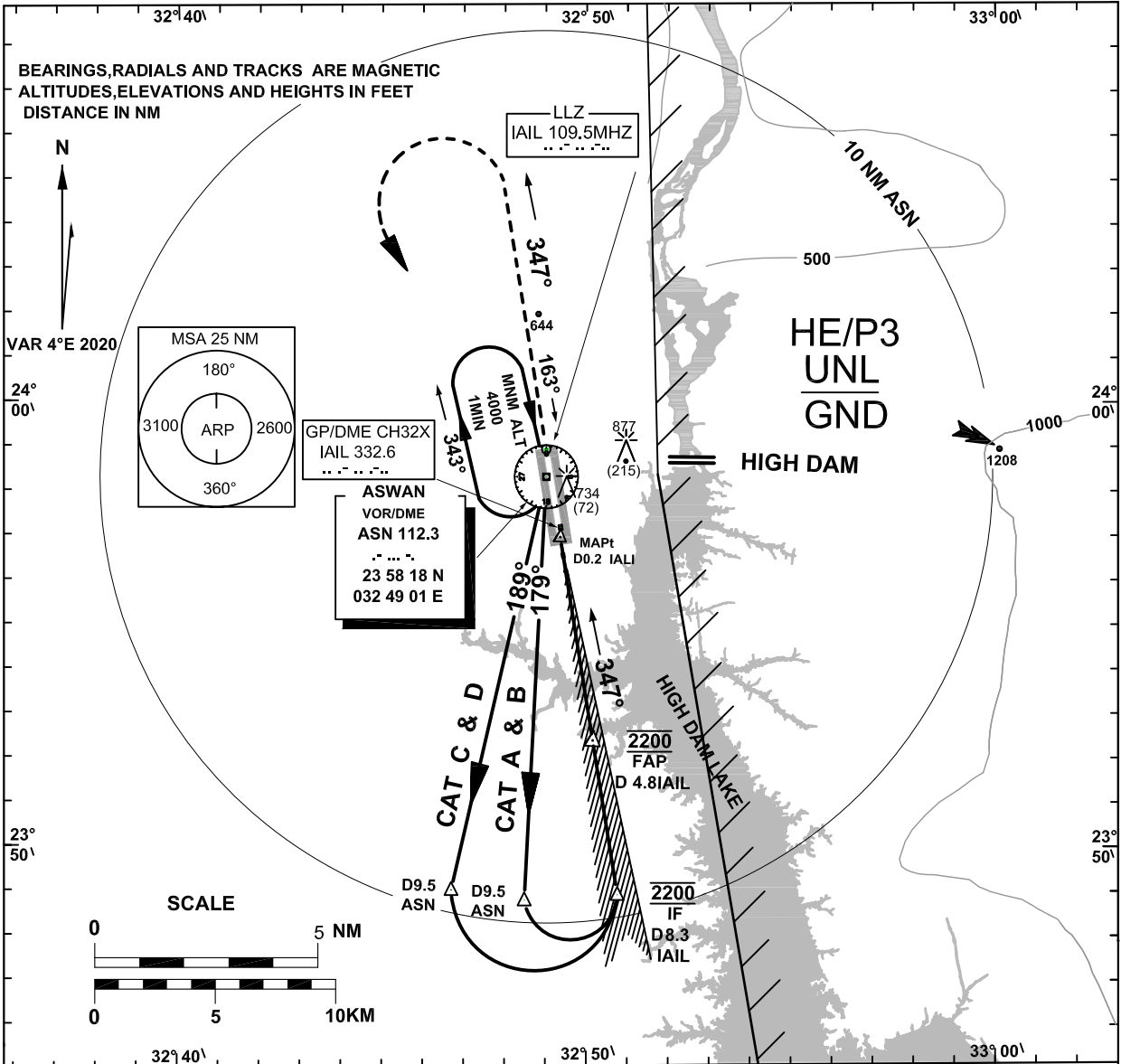
HESN/ASW

**INSTRUMENT  
APPROACH  
CHART-ICAO**

**AERODROME ELEV 662FT**  
HEIGHTS RELATED TO  
AD ELEVATION

TWR 118.3  
GND 121.9  
RADAR 120.3  
EMERG 121.5

**ASWAN /ASWAN**  
ILS or LOC  
RWY 35





---

**ASWAN (HESN)**

ILS or LOC RWY 35

**AERONAUTICAL DATA TABULATION**

<b>ILS APCH to RWY 35 from ASN VOR/DME</b>	
<b>Fix/point</b>	<b>Coordinates</b>
ASN VOR/DME (IAF)	23 58 18.4N 032 49 01.0E
D9.5 ASN –TR189°/9.5NM ASN FOR ACFT (C&D)	23 49 00.8N032 46 41.9E
D9.5 ASN –TR179°/9.5NM ASN FOR ACFT (A&B)	23 48 47.0N 032 48 29.2E
D8.3 IAIL – TR347°/8.3NM IAIL (IF)	234854.4N 032 50 45.7E
D4.8 IAIL - TR347°/4.8NM IAIL (FAP)	235222.6N 032 50 09.4E
(MAPt ) IS RWY THR 35/ BRG 171°/ 1.4NM ASN, 0.2NM IAIL(DME)	23 56 57.09N 032 49 21.45E
THR RWY 35	23 56 57.09N 032 49 21.45E
IAIL (GP/DME)	23 57 09.9N 032 49 21.9E
IAIL (LLZ)	23 58 55.4N 032 49 00.8E

---



For Simulation Use Only  
Not For Real Life

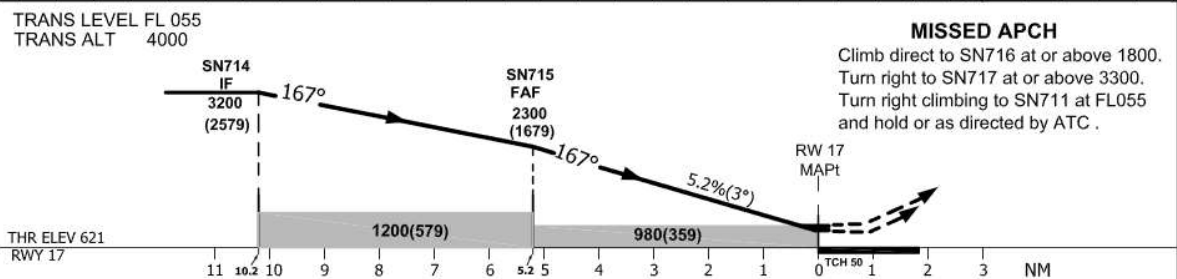
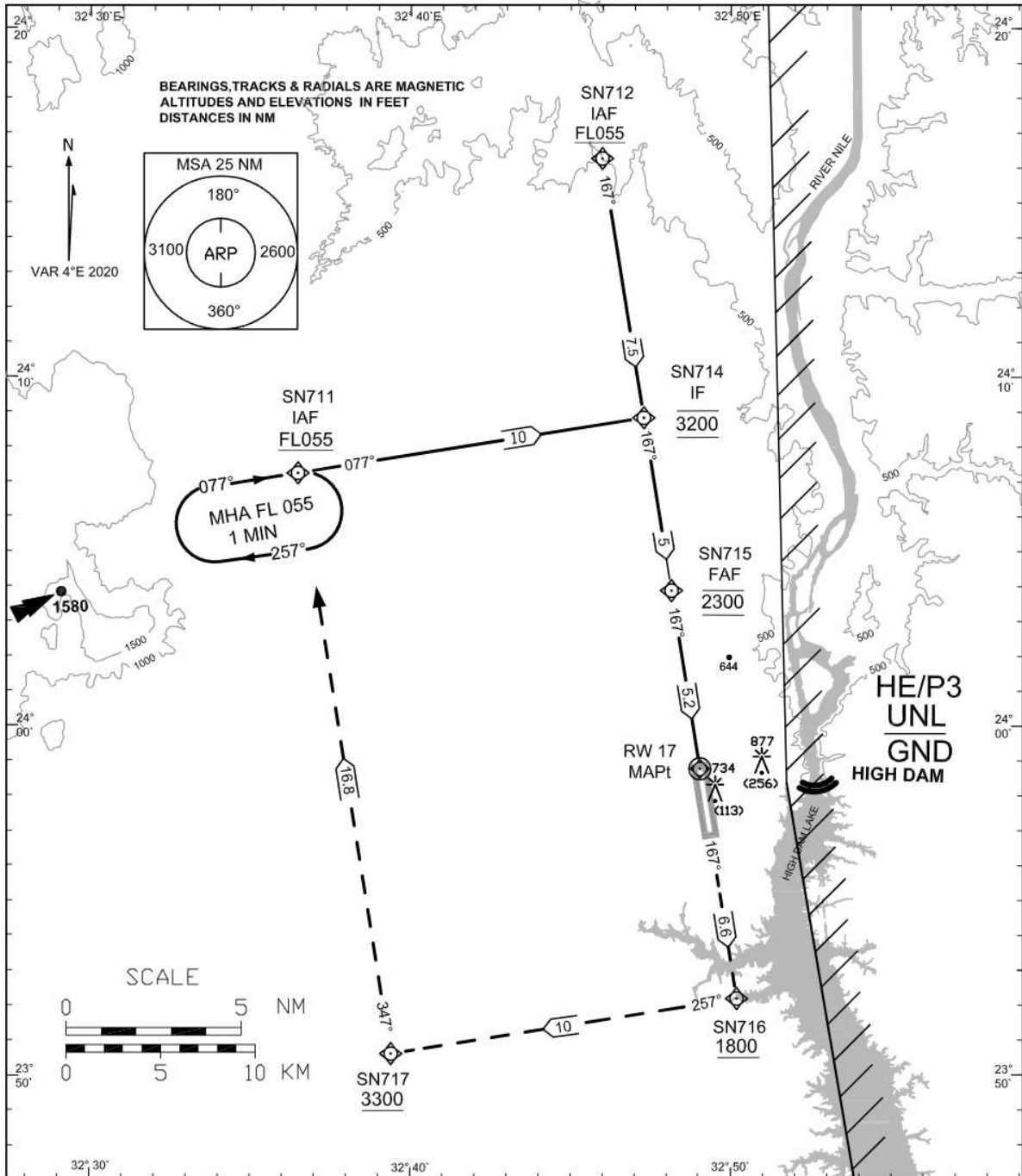
HESN/ASW

**INSTRUMENT  
APPROACH  
CHART- ICAO**

**AERODROME ELEV 662FT  
HEIGHTS RELATED TO  
THR RWY 17 ELEV 621FT**

TWR 118.3  
GND 121.9  
RADAR 120.3  
EMERG 121.5

**ASWAN / ASWAN  
RNP RWY 17**



OCA (OCH)	A	B	C	D
LNAV	980(359)			
LNAV / VNAV	880(259)			

**T MNM BARO VNAV : 0°C**

GND speed - KT	70	90	100	120	140	160
Descent angle(3°)	372	478	531	637	743	850



<b>Instrument Approach CHART-ICAO</b>	AD ELEV 662FT HEIGHTS RELATED TO THR RWY 17 ELEV 621FT T MNM baroVNAV= 0°C	TWR 118.3 GND 121.9 RADAR 120.3 EMERG 121.5	<b>ASWAN / ASWAN RNP RWY 17</b>
---	--	--	-------------------------------------

**TABULAR DESCRIPTION**

Serial Number	Path Descriptor	Waypoint Identifier	Fly-Over	Course °M(°T)	Magnetic Variation	Distance (NM)	Turn Direction	Altitude(ft)	Speed (Kts)	VPA°/TCH (FT)	Navigation Specification
010	IF	SN711	-	-	-4	-	-	+FL 055	-	-	RNP APCH
020	TF	SN714	-	077(080.7)	-4	10	R	@3200	-	-	RNP APCH
010	IF	SN712	-	-	-4	-	-	+FL 055	-	-	RNP APCH
020	TF	SN714	-	167(170.8)	-4	7.5	-	@32000	-	-	RNP APCH
010	IF	SN714	-	-	-4	-	-	@32000	-	-	RNP APCH
020	TF	SN715	-	167(170.8)	-4	5	-	@2300	-	-	RNP APCH
030	TF	RW17	Y	167(170.8)	-4	5.2	-	--	-	-3.0/50	RNP APCH
040	TF	SN716	-	167(170.8)	-4	6.6	R	+1800	-	-	RNP APCH
050	TF	SN717	-	257(260.8)	-4	10	R	+3300	-	-	RNP APCH
060	TF	SN711	-	347(350.8)	-4	16.8	-	@FL 055	-	-	RNP APCH
070	HM	SN711	-	077(080.7)	-4	1 MIN	R	+FL 055	-	-	RNP APCH

**WAYPOINT LIST**

Waypoint Identifier	Coordinates
SN711	24° 07' 14.09" N 032° 36' 28.89" E
SN712	24° 16' 16.00" N 032° 45' 58.44" E
SN714	24° 08' 50.10" N 032° 47' 16.68" E
SN715	24° 03' 52.82" N 032° 48' 08.75" E
RW17	23° 58' 46.27" N 032° 49' 02.37" E
SN716	23° 52' 11.17" N 032° 50' 11.37" E
SN717	23° 50' 35.38" N 032° 39' 24.94" E





For Simulation Use Only  
Not For Real Life

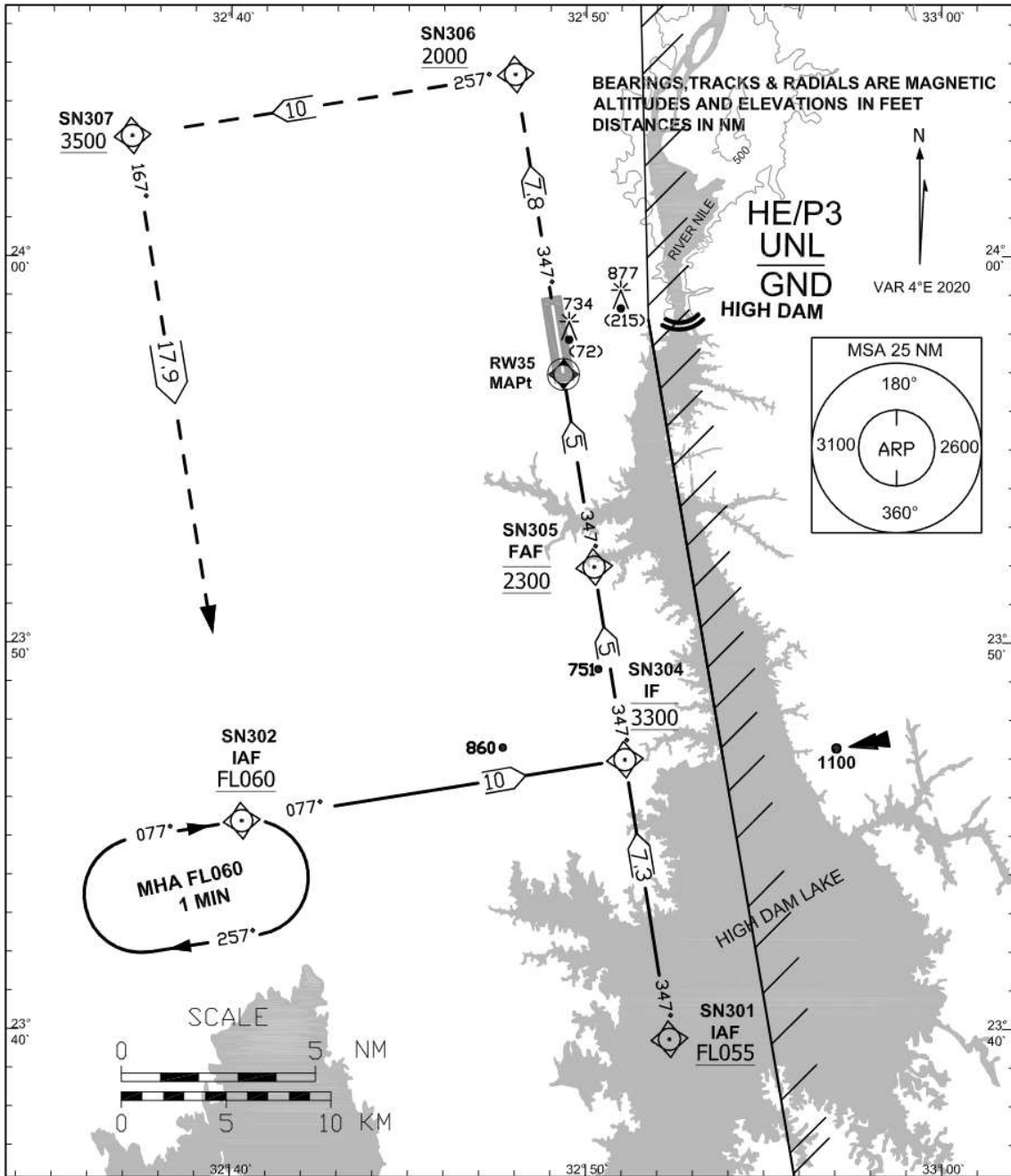
HESN/ASW

**INSTRUMENT  
APPROACH  
CHART - ICAO**

**AERODROME ELEV 662 FT  
HEIGHTS RELATED TO  
AD ELEVATION**

TWR	118.3
GND	121.9
RADAR	120.3
EMERG	121.5

ASWAN / ASWAN  
RNP RWY 35

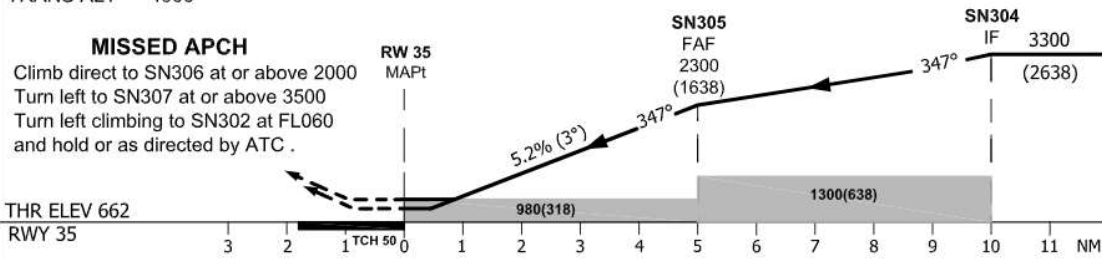


TRANS LEVEL FL 055  
TRANS ALT 4000

**MISSED APCH**

Climb direct to SN306 at or above 2000  
Turn left to SN307 at or above 3500  
Turn left climbing to SN302 at FL060  
and hold or as directed by ATC .

THR ELEV 662  
RWY 35



ACFT CAT	A	B	C	D
LNAV	980(318)			
LNAV / VNAV	920 (258)			

**T MNM BARO VNAV : 0°C**

GND speed -Kts	70	90	100	120	140	160
Descent angle(3.00°)	372	478	531	637	743	850



<b>Instrument Approach CHART-ICAO</b>	AD ELEV 662FT HEIGHTS RELATED TO AD ELEVATION T MNM baroVNAV= 0°c	TWR 118.3 GND 121.9 RADAR 120.3 EMERG 121.5	<b>ASWAN / ASWAN RNP RWY 35</b>
---	--	--	-------------------------------------

**TABULAR DESCRIPTION**

Serial Number	Path Descriptor	Waypoint Identifier	Fly-Over	Course °M(°T)	Magnetic Variation	Distance (NM)	Turn Direction	Altitude(ft)	Speed (Kts)	VPA°/TCH (FT)	Navigation Specification
010	IF	SN301	-	-	-4	-	-	+FL 055	-	-	RNP APCH
020	TF	SN304	-	347(350.9)	-4	7.3	-	@3300	-	-	RNP APCH
010	IF	SN302	-	-	-4	-	-	+FL 060	-	-	RNP APCH
020	TF	SN304	-	077(080.8)	-4	10	L	@3300	-	-	RNP APCH
010	IF	SN304	-	-	-	-	-	@3300	-	-	RNP APCH
020	TF	SN305	-	347(350.9)	-4	5	-	@2300	-	-	RNP APCH
030	TF	RW35	Y	347(350.9)	-4	5	-	-	-	-3.0/50	RNP APCH
040	TF	SN306	-	347(350.9)	-4	7.8	L	+2000	-	-	RNP APCH
050	TF	SN307	-	257(260.9)	-4	10	L	+3500	-	-	RNP APCH
060	TF	SN302	-	167(170.9)	-4	17.9	-	@FL 060	-	-	RNP APCH
070	HM	SN302	-	077(080.8)	-4	1 MIN	R	+FL 060	-	-	RNP APCH

**WAYPOINT LIST**

Waypoint Identifier	Coordinates
SN301	23° 39' 44.84" N 032° 52' 21.39" E
SN302	23° 45' 23.20" N 032° 40' 19.80" E
SN304	23° 46' 58.92" N 032° 51' 05.82" E
SN 305	23° 51' 58.01" N 032° 50' 13.67" E
RW35	23° 56' 57.09" N 032° 49' 21.45" E
SN306	24° 04' 42.84" N 032° 47' 59.99" E
SN307	24° 03' 06.88" N 032° 37' 12.54" E



For Simulation Use Only  
Not For Real Life

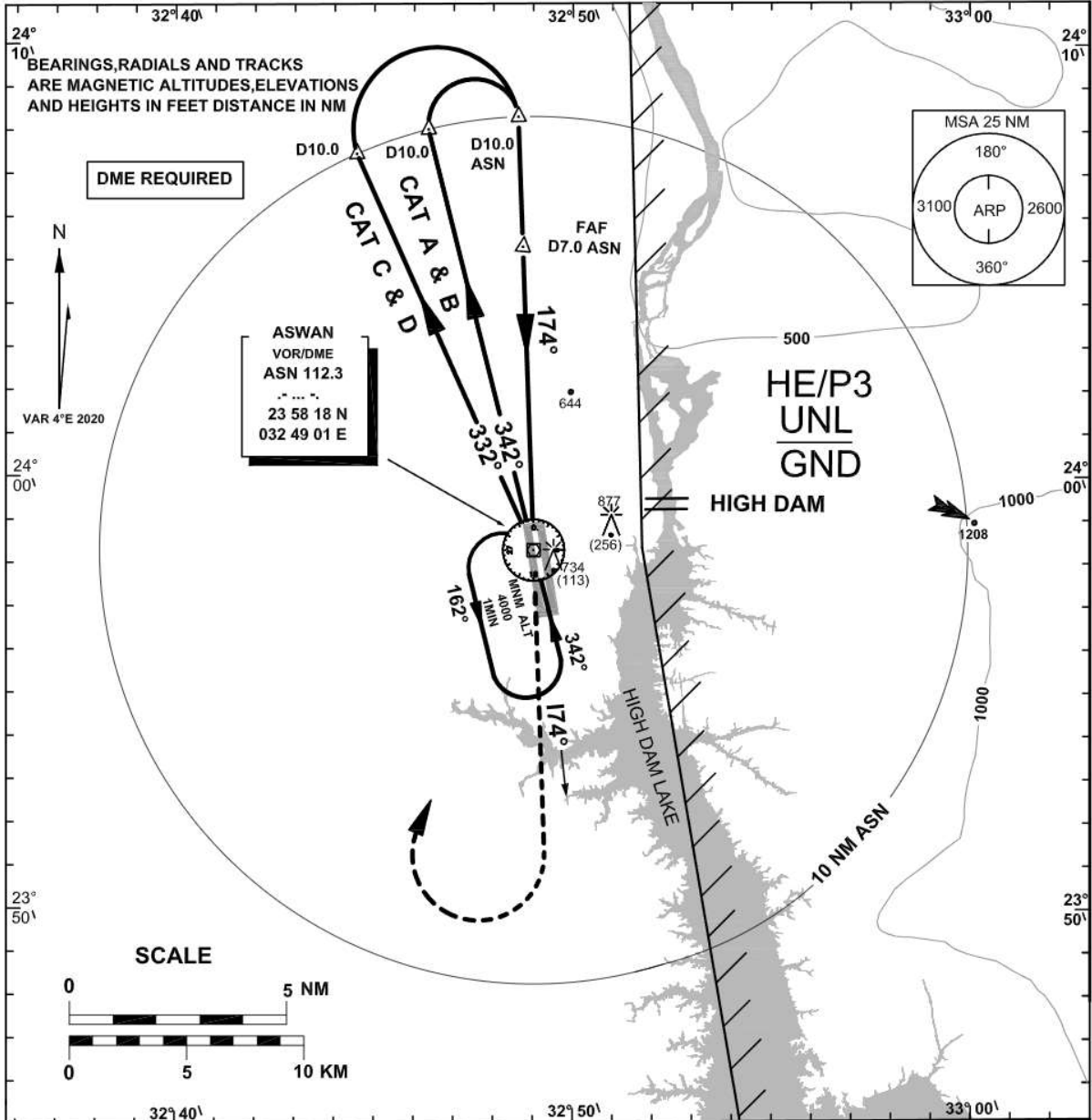
HESN/ASW

**INSTRUMENT  
APPROACH  
CHART-ICAO**

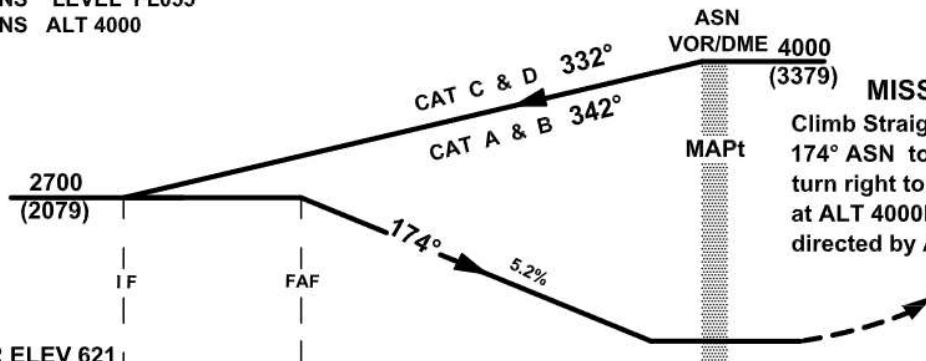
**AERODROME ELEV 662FT**  
HEIGHTS RELATED TO  
THR RWY 17 ELEV 621 FT

TWR 118.3  
GND 121.9  
RADAR 120.3  
EMERG 121.5

**ASWAN / ASWAN**  
VOR RWY 17



TRANS LEVEL FL055  
TRANS ALT 4000



THR ELEV 621

RWY 17 10 9 8 7 6 5 4 3 2 1 0 1 2 3 4 NM

ACFT CAT	A	B	C	D
OCA (OCH)	980(359)			



**ASWAN (HESN)**

VOR RWY 17

**AERONAUTICAL DATA TABULATION**

<b>VOR APCH to RWY 17 from ASN VOR/DME</b>	
<b>Fix/point</b>	<b>Coordinates</b>
ASN VOR/DME (IAF)	23 58 18.4N 032 49 01.0E
D10 ASN –TR332°/10NM ASN FOR ACFT (C&D)	24 07 28.2N 032 44 33.4E
D10 ASN –TR342°/10NM ASN FOR ACFT (A&B)	24 08 02.5N 032 46 21.5E
D10 ASN– TR 174° /10NM ASN (IF)	24 08 20.2 N 032 48 37.2E
D7.0 ASN –TR 174°/7NM ASN (FAF)	24 05 19.7N 032 48 44.4E
(MAPt) VOR ASN	23 58 18.4N 032 49 01.0E
THR RWY 17	23 58 46.27N 032 49 02.37E





For Simulation Use Only  
Not For Real Life

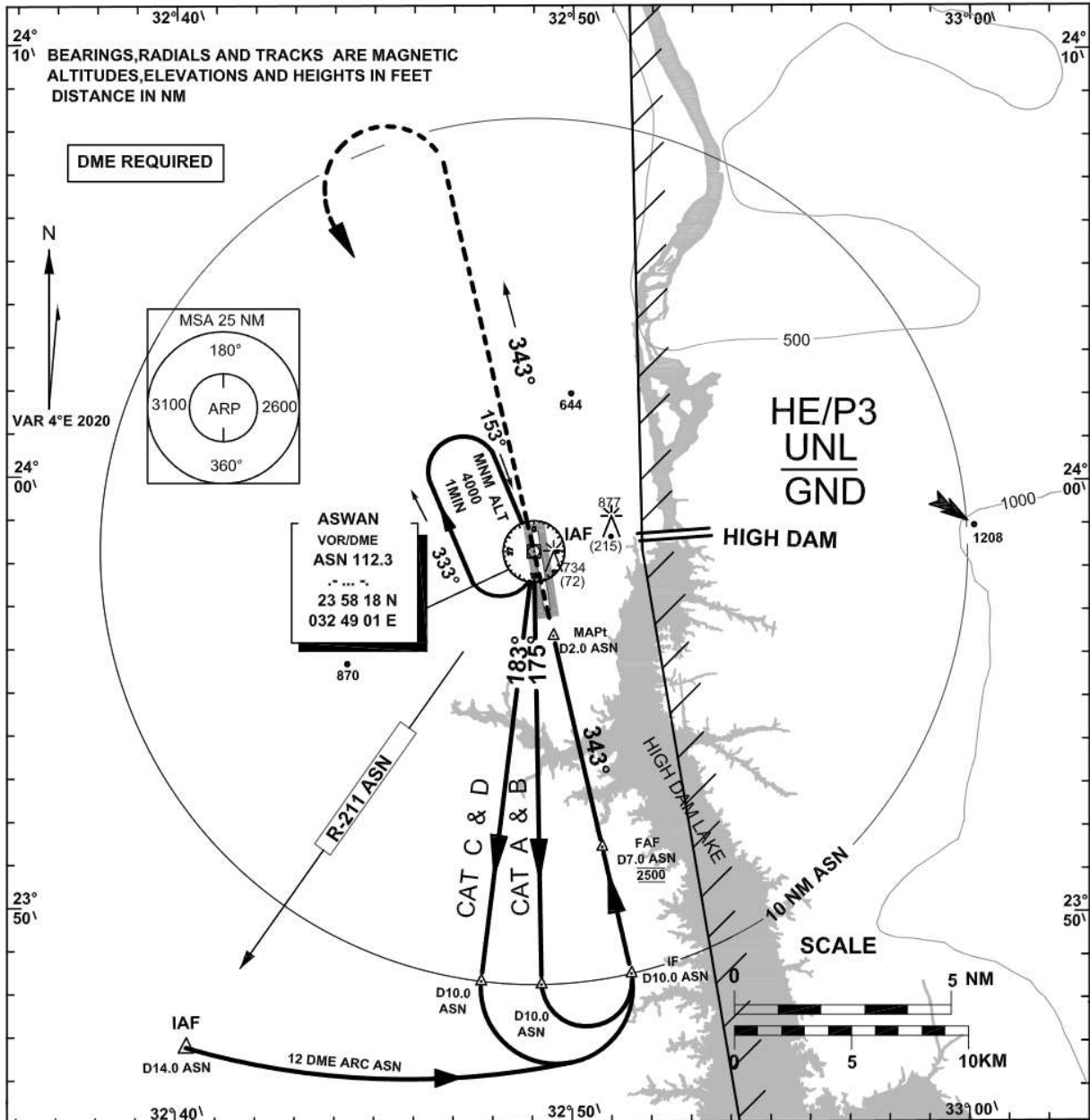
HESN/ASW

**INSTRUMENT  
APPROACH  
CHART-ICAO**

**AERODROME ELEV 662FT**  
HEIGHTS RELATED TO  
AD ELEVATION

TWR	118.3
GND	121.9
RADAR	120.3
EMERG	121.5

**ASWAN / ASWAN**  
**VOR Y RWY 35**



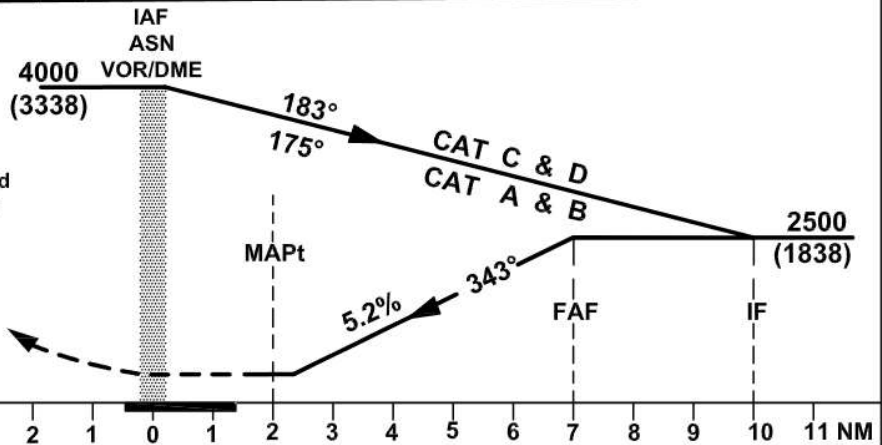
TRANS LEVEL FL 055  
TRANS ALT 4000

**MISSED APCH**

Climb Straight ahead outbound  
on R-343 ASN to 3000FT then  
turn left and return to ASN  
at ALT 4000FT and hold  
or as directed by ATC.

THR ELEV 662

RWY 35



ACFT CAT	A	B	C	D
OCA (OCH)	980(318)			



---

**ASWAN (HESN)**

**VOR Y RWY 35**

**AERONAUTICAL DATA TABULATION**

<b>VOR Y APCH to RWY 35 from ASN VOR/DME</b>	
<b>Fix/point</b>	<b>Coordinates</b>
ASN VOR/DME (IAF)	23 58 18.4N 032 49 01.0E
D10 ASN –TR183°/10NM ASN FOR ACFT (C&D)	23 48 20.6N 032 47 42.1E
D10 ASN –TR175°/10NM ASN FOR ACFT (A&B)	23 48 16.3N 032 49 13.3 E
D10 ASN– TR 343° /10NM ASN (IF)	23 48 31.8 N032 51 29.1 E
D7.0 ASN –TR 343°/7NM ASN (FAF)	23 51 27.8 N032 50 44.7 E
(MAPt) /BRG 167°/D2.0 ASN	23 56 21.1N 032 49 30.5 E
THR RWY 35	23 56 57.09N032 49 21.45 E

---



For Simulation Use Only  
Not For Real Life

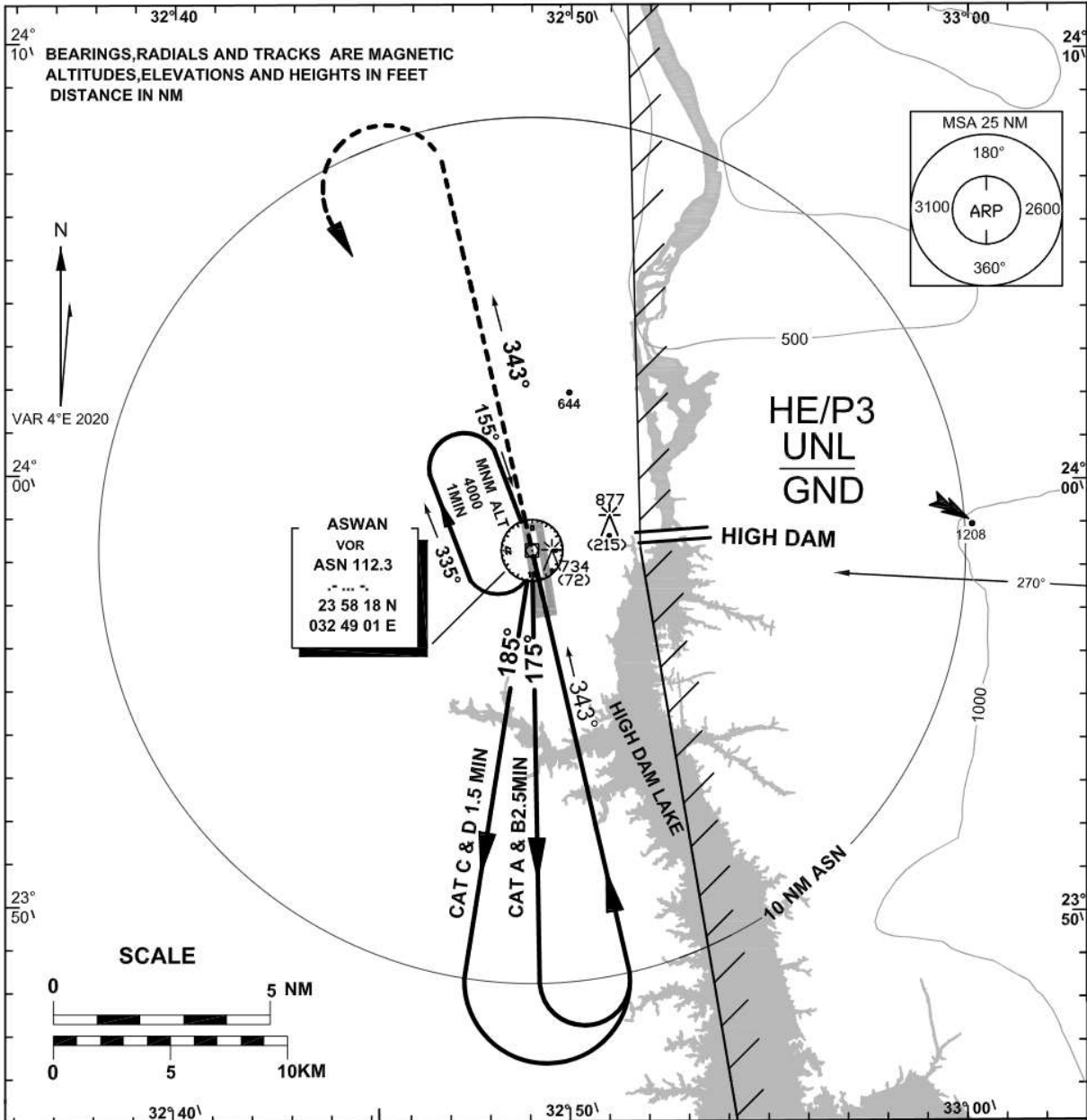
HESN/ASW

### INSTRUMENT APPROACH CHART-ICAO

**AERODROME ELEV 662FT**  
HEIGHTS RELATED TO  
AD ELEVATION

TWR 118.3  
GND 121.9  
RADAR 120.3  
EMERG 121.5

**ASWAN / ASWAN**  
VOR Z RWY 35

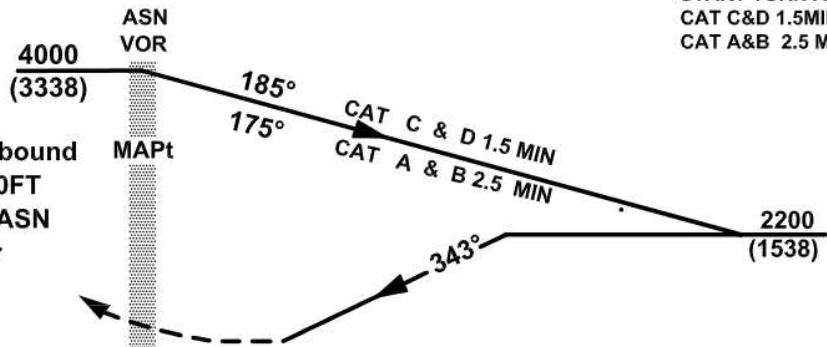


TRANS LEVEL FL 055  
TRANS ALT 4000

START TURN AT :  
CAT C&D 1.5MIN  
CAT A&B 2.5 MIN

#### MISSED APCH

Climb Straight ahead outbound  
on R-343 ASN to ALT 3000FT  
then turn left to return to ASN  
at ALT 4000FT and hold or  
as directed by ATC.



THR ELEV 662

RWY 35	3	2	1	0	1	2	3	4	5	6	7	8	9	10	11 NM
ACFT CAT	A	B	C	D											
OCA (OCH)	1030(368)														



ASWAN (HESN)

VOR Z RWY 35

AERONAUTICAL DATA TABULATION

VOR Z APCH to RWY 35 from ASN VOR	
Fix/point	Coordinates
ASN VOR (IAF)	23 58 18.4N 032 49 01.0E
ASN VOR –TR185°-1.5MIN ASN FOR ACFT (C&D)	
ASN VOR –TR175°- 2.5MIN ASN FOR ACFT (A&B)	
TR 343° ASN VOR (IF)	
TR 343° ASN VOR (FAF) 1.2 MIN FOR ACFT (C&D) & 1.5 MIN FOR ACFT (A&B)	
(MAPt) VOR ASN	23 58 18.4N 032 49 01.0E
THR RWY 35	23 56 57.09N 032 49 21.45E