



For Simulation Use Only  
Not For Real Life

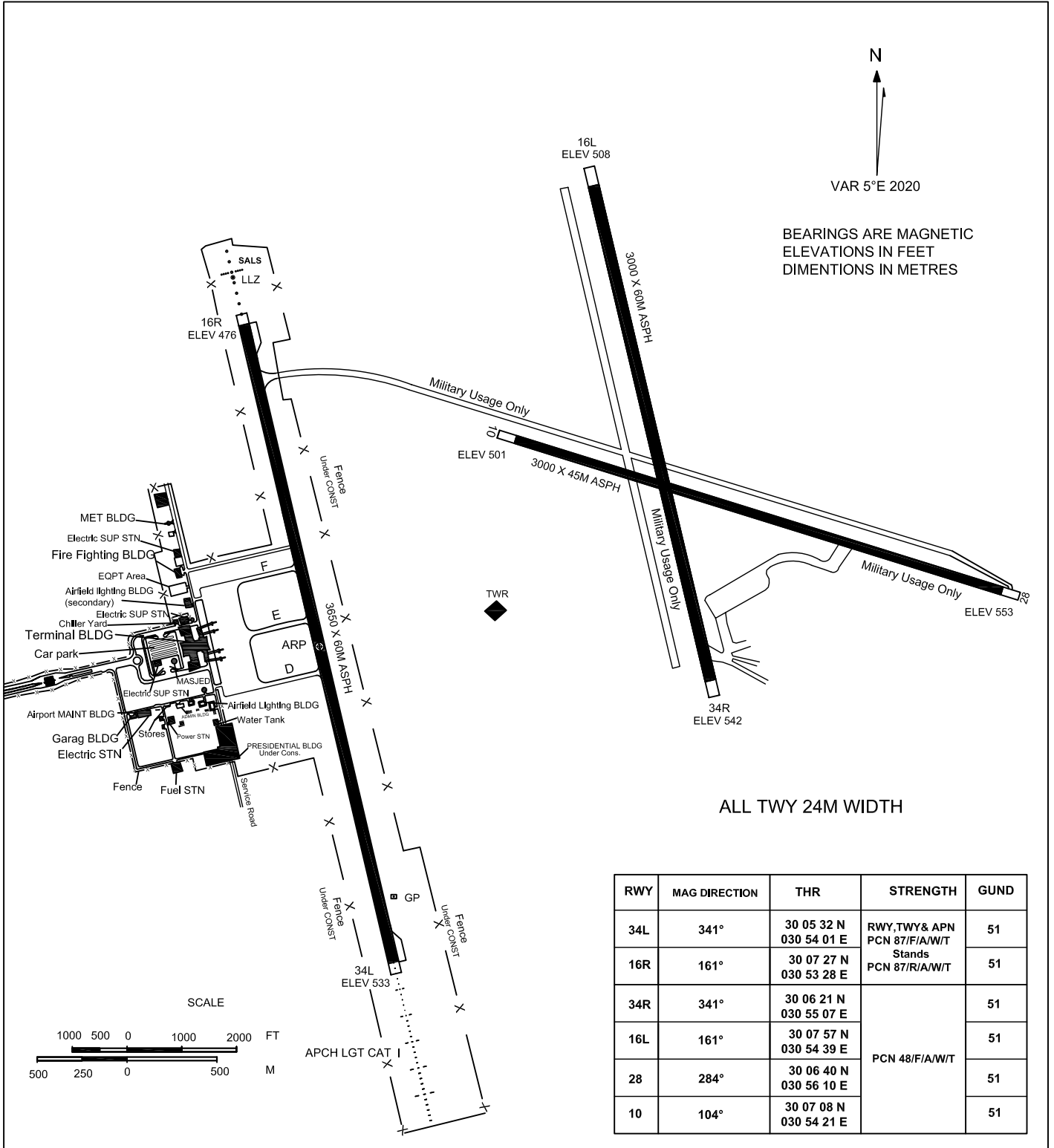
HESX/SPX

# AERODROME CHART - ICAO

30° 06' 29" N  
030° 53' 45" E ELEV 553FT

TWR	121.0	(Main)
TWR	118.725	(ALTN)
EMERG	121.5	
GND	121.925	

# GIZA / SPHINX



N  
VAR 5°E 2020

BEARINGS ARE MAGNETIC  
ELEVATIONS IN FEET  
DIMENSIONS IN METRES

ALL TWY 24M WIDTH



For Simulation Use Only  
Not For Real Life

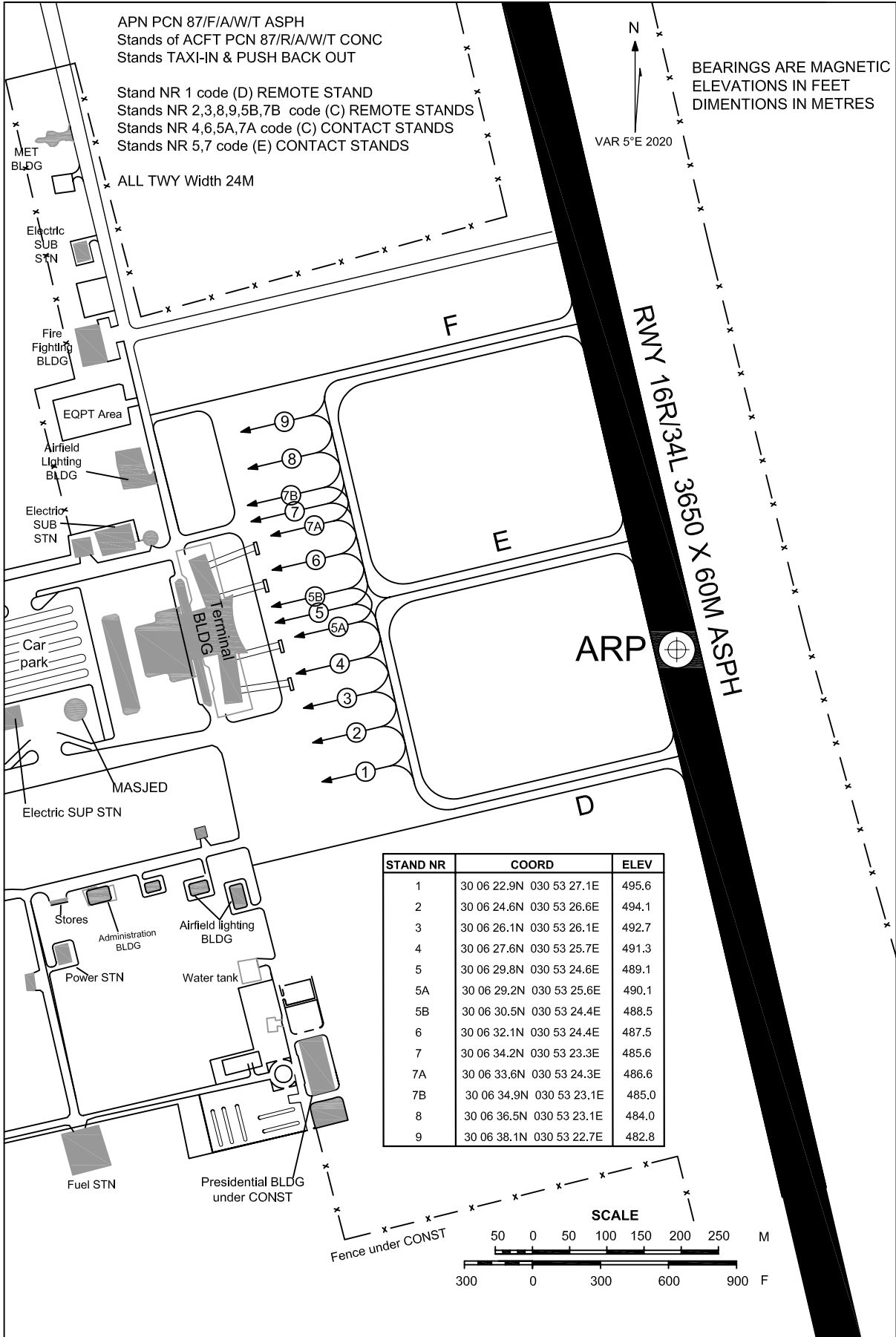
HESX/SPX

# AIRCRAFT PARKING / DOCKING CHART - ICAO

ELEV 496FT

TWR	121.0	(Main)
TWR	118.725	(ALTN)
EMERG	121.5	
GND	121.925	

GIZA / SPHINX





For Simulation Use Only  
Not For Real Life

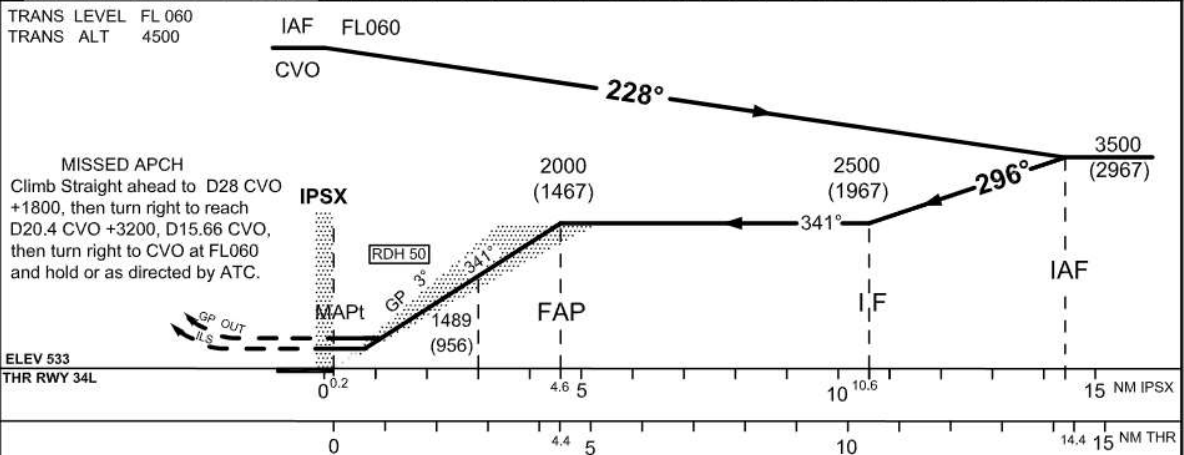
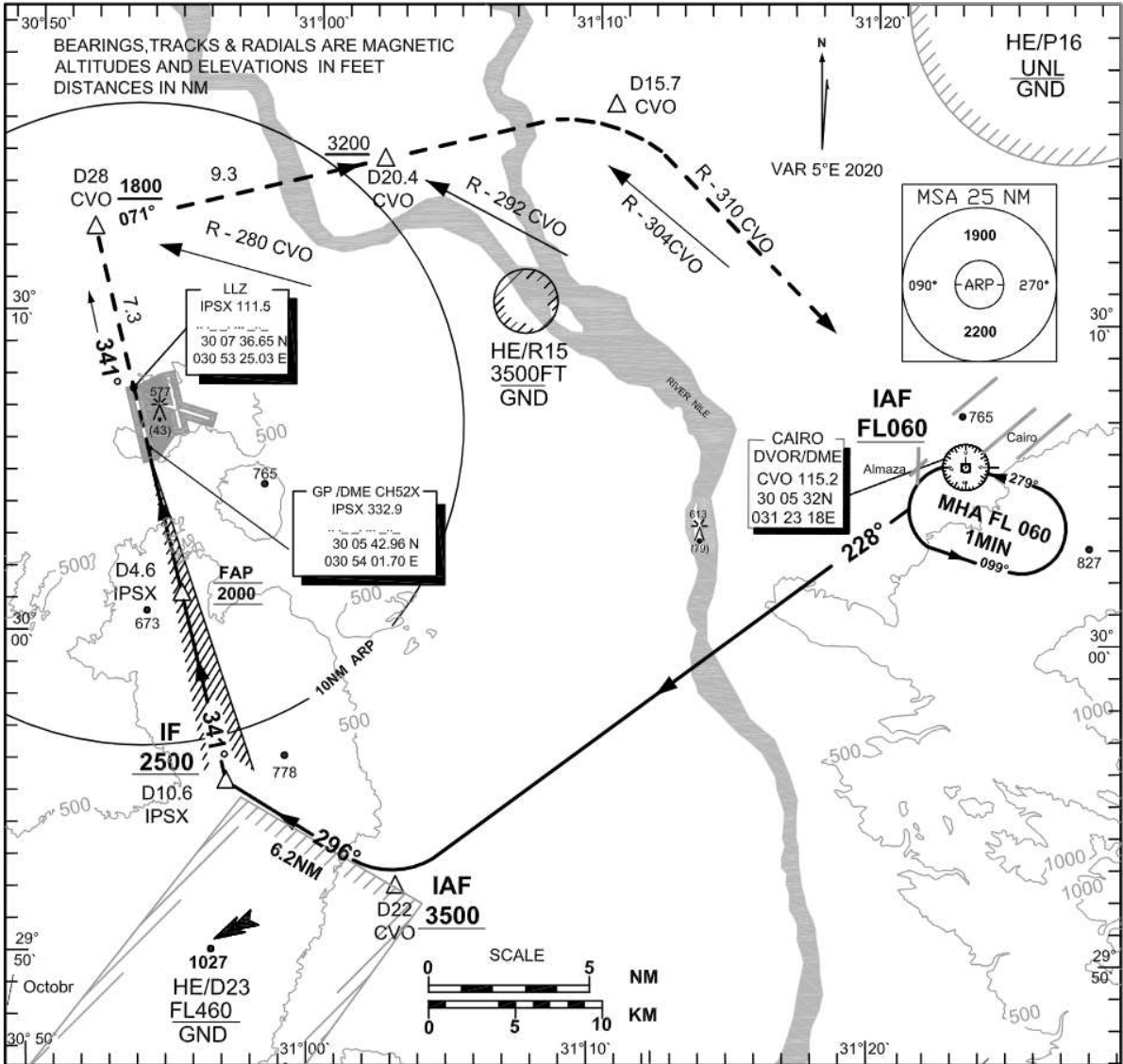
HESX/SPX

INSTRUMENT  
APPROACH  
CHART-ICAO

AERODROME ELEV 553FT  
HEIGHTS RELATED TO  
THR RWY 34L ELEV 533FT

TWR 121.0 (Main)  
118.725(ALTN)  
EMERG 121.5  
GND 121.925

GIZA /SPHINX  
ILS or LOC  
RWY 34L



OCA (OCH)	A	B	C	D	GP INOP
Straight in CAT1	734 (201)	744 (211)	754 (221)	764 (231)	840 (307)



Sphinx (HESX)

ILS or LOC RWY 34L

AERONAUTICAL DATA TABULATION

ILS APCH to RWY 34L from CVO DVOR/DME	
Fix/point	Coordinates
CVO DVOR/DME (IAF)	30 05 32.3N 031 23 18.3E
D 22 CVO – RDL 228(IAF)	29 52 11.7N 031 03 05.82E
6.2NM FM D22 FIX TR296° (IAF)	29 55 22.8N 030 56 58.46E
D10.6 IPSX – (IF)	29 55 22.8N 030 56 58.46E
D4.6 IPSX – (FAP)	30 01 12.61N 030 55 16.85E
(MAPt) THR RWY 34L TR341° / 0.2NM IPSX	30 05 31.9N 030 54 01.4E
THR RWY 34L	30 05 31.9N 030 54 01.4E
D28 CVO BRG 280° / 28 NM CVO	30 12 36.4 N 030 51 57.5 E
D20.4 CVO BRG 292° / 20.4 NM CVO	30 14 52.8 N 031 02 18.9 E
D15.7 CVO BRG 310° / 15.7 NM CVO	30 16 41.1N 031 10 34.7 E
IPSX (GP/DME)	30 05 42.96N 030 54 01.70E
IPSX (LLZ)	30 07 36.65N 030 53 25.03E



For Simulation Use Only  
Not For Real Life

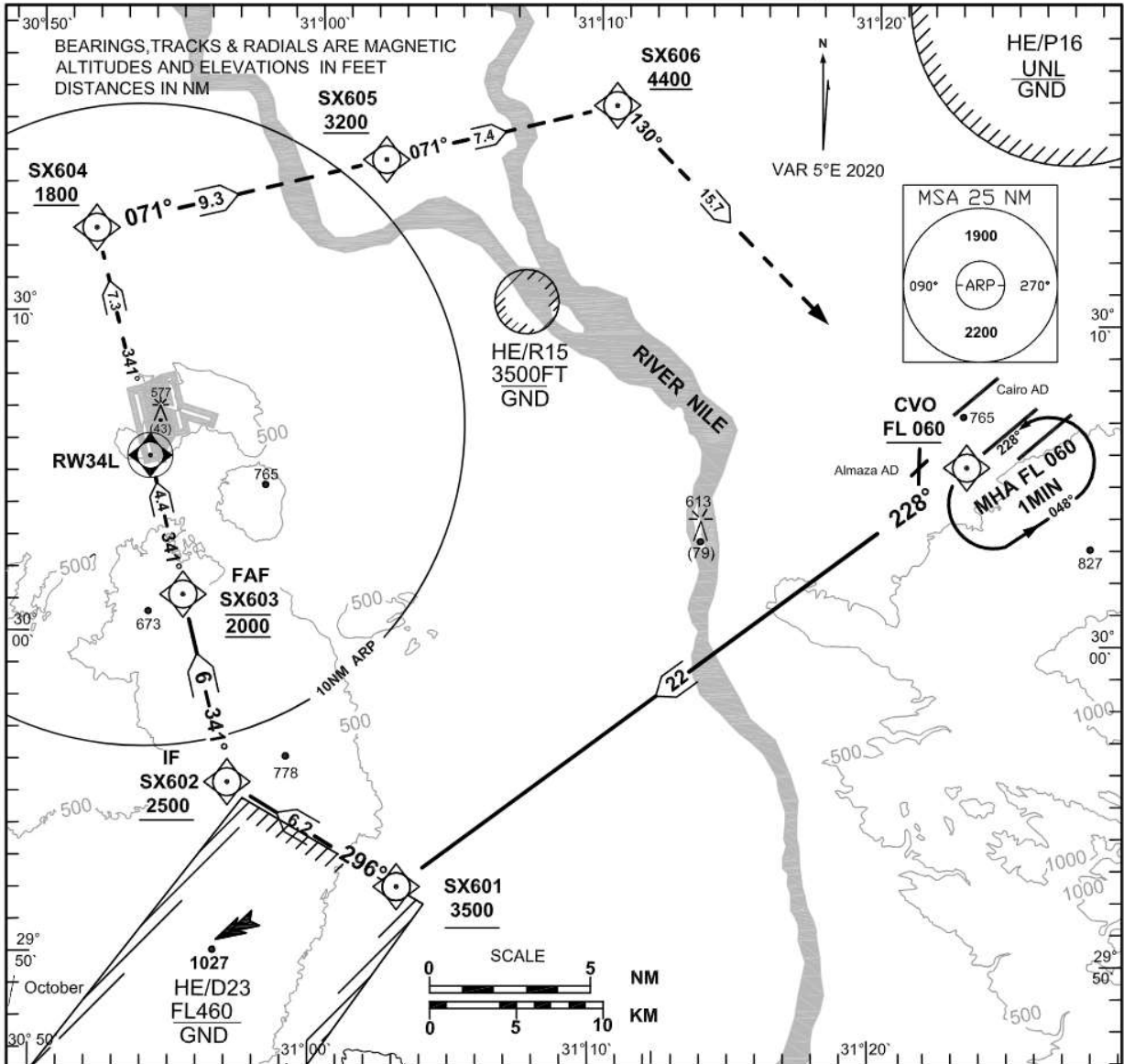
HESX/SPX

INSTRUMENT  
APPROACH  
CHART-ICAO

AERODROME ELEV 553FT  
HEIGHTS RELATED TO  
THR RWY 34L ELEV 533FT

TWR 121.0 (Main)  
118.725(ALTN)  
EMERG 121.5  
GND 121.925

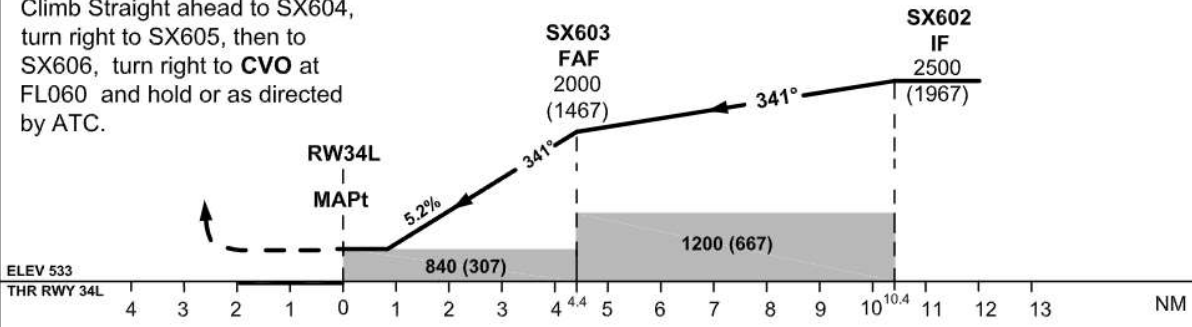
GIZA /SPHINX  
RNP RWY 34L



TRANS LEVEL FL 060  
TRANS ALT 4500

**MISSED APCH**

Climb straight ahead to SX604, turn right to SX605, then to SX606, turn right to **CVO** at FL060 and hold or as directed by ATC.



OCA(OCH)	A	B	C	D	GND speed	KTs	70	90	100	120	140	160
LNAV	840(307)				Rate of descent FAF - MAPt (5.2%)	ft/m	372	478	531	637	743	850



For Simulation Use Only  
Not For Real Life

HESX/SPX

<b>Instrument Approach CHART-ICAO</b>	AD ELEV 553 FT HEIGHTS RELATED TO THR RWY 34L ELEV 533FT	TWR 121.0 (Main) 118.725 (ALTN) EMG 121.5 GND 121.925	<b>GIZA / SPHINX RNP RWY 34L</b>
---------------------------------------	--	--	--------------------------------------

**TABULAR DESCRIPTION**

Serial Number	Path Descriptor	Waypoint Identifier	Fly-Over	Course °M(°T)	Magnetic Variation	Distance (NM)	Turn Direction	Altitude (FT)	Speed (Kts)	VPA°/TCH FT	Navigation Specification
010	IF	CVO	-	-	- 5	-	-	+FL060	-	-	RNP APCH
020	TF	SX601	-	228(233)	- 5	22	R	+3500	-	-	RNP APCH
030	TF	SX602	-	296(301)	- 5	6.2	R	+2500	-	-	RNP APCH
040	TF	SX603	-	341(346)	- 5	6	-	@2000	-	-	RNP APCH
050	TF	RW34L	Y	341(346)	- 5	4.4	-	-	-	-3.0/50	RNP APCH
060	TF	SX604	-	341(346)	- 5	7.3	R	+1800	-	-	RNP APCH
070	TF	SX605	-	071(076)	- 5	9.3	-	+3200	-	-	RNP APCH
080	TF	SX606	-	071(076)	- 5	7.4	R	+4400	-	-	RNP APCH
090	TF	CVO	-	130(135)	- 5	15.7	-	+FL060	-	-	RNP APCH
100	HM	CVO	-	228(233)	- 5	1MIN	L	+ FL060	-	-	RNP APCH

**Waypoint Coordinates**

Waypoint Identifier	Coordinates
CVO	30° 05' 32.0" N 031° 23' 18.0" E
SX601	29° 52' 11.6" N 031° 03' 05.8" E
SX602	29° 55' 22.8" N 030° 56' 58.5" E
SX603	30° 01' 12.6" N 030° 55' 16.8" E
RW34L	30° 05' 31.90" N 030° 54' 01.40" E
SX604	30° 12' 36.4" N 030° 51' 57.5" E
SX605	30° 14' 52.8" N 031° 02' 18.9" E
SX606	30° 16' 41.1" N 031° 10' 34.7" E